



Spectroscopic Record Sheet



Details on acquisitions

Object	rp 1555
Coordinates (J2000)	05:20:51.7 -67:05:43.3
Type	True PN

Observation date	29.137/11/2024
Weather conditions	/
Observer	2SPOT
Location	Deep Sky Chile (CL)

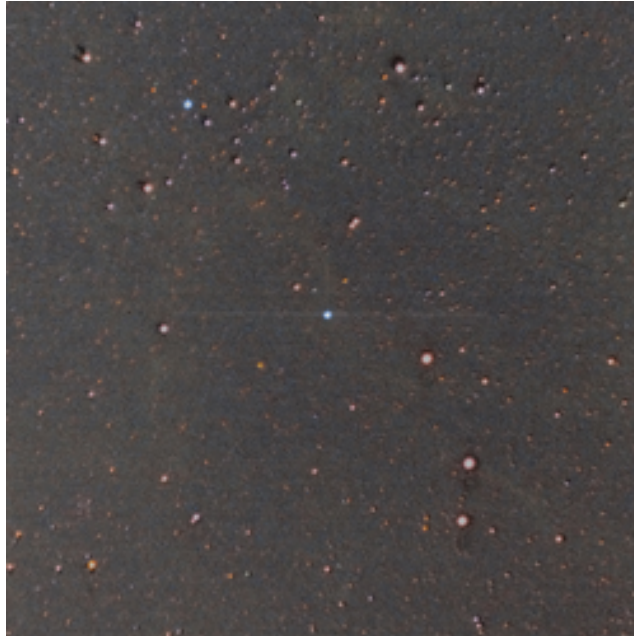
Mount	10 Micron GM3000 HPS
Telescope	Newton 300mm F/4
Spectroscope	Alpy 600 (23um slit)
Resolution (bin 1x1)	~1nm at 656 nm
Principal camera	Atik 414 EX
Dispersion (bin 1x1)	~0,3 nm/pixel at 656 nm
Cam temperature	-10°C
Binning	1x1
Guiding camera	ASI 178MM
Data acquisition Soft	Prism v11.2.3.21
Data processing soft	ISIS V6.1.1

Exposure on object	3 x 1200 s
Master Dark	Corrected
Master Flat	Corrected
Master Offset	Corrected
Neon-Argon calibration	Corrected
Reference star calib.	HD42525_A0V
Exposure on ref star	12 x 20 s
Ref star Sp. date	29.108/11/2024



Slit position and images

Slit position



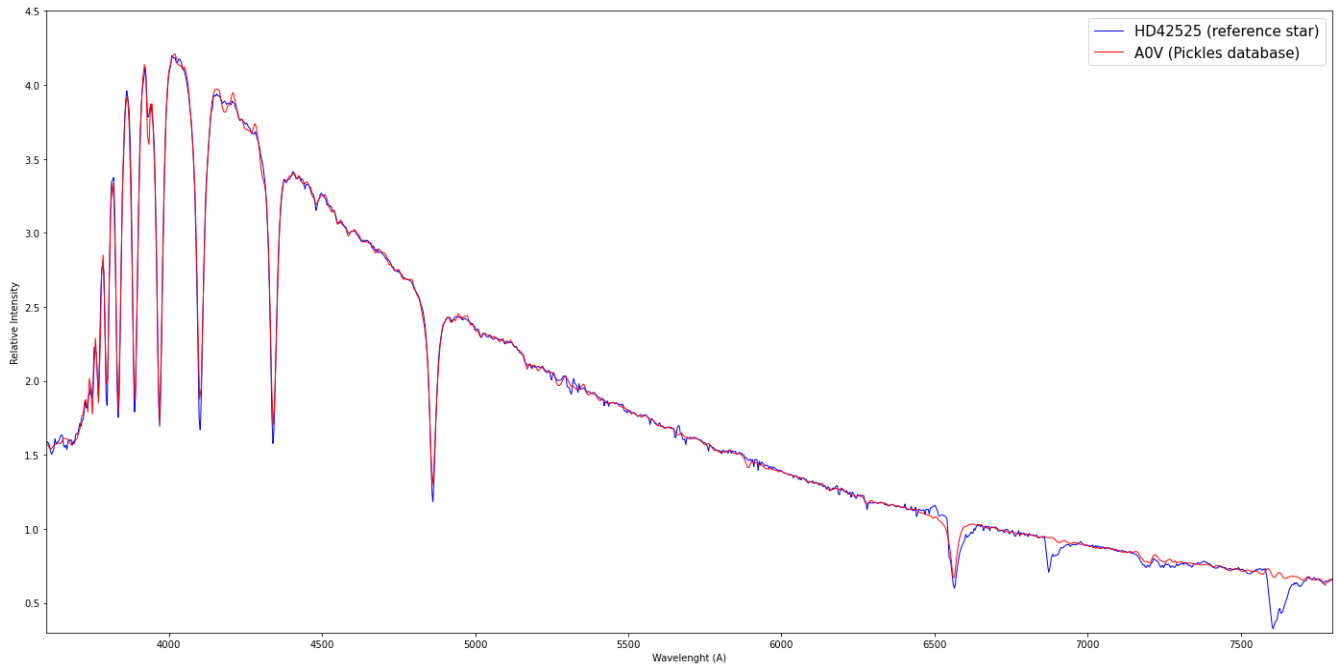
Object picture(s)



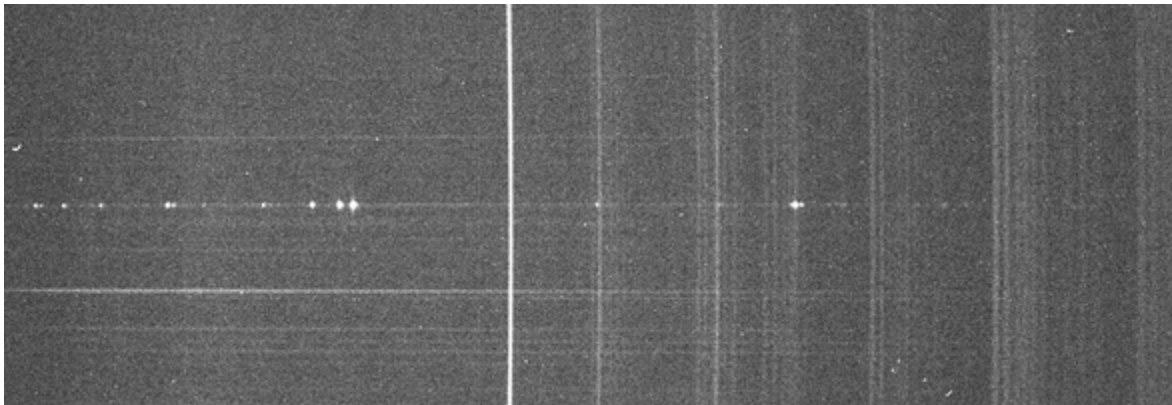


Instrumental Response and 2D Spectra

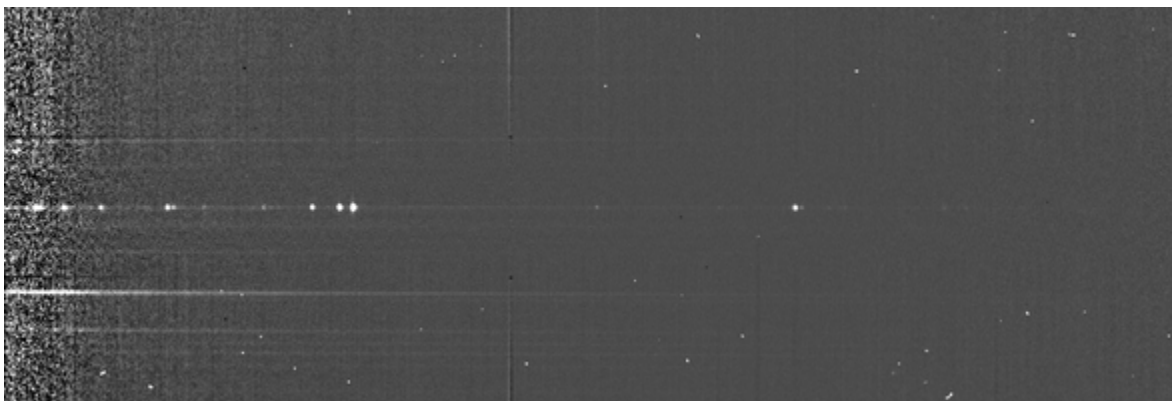
Instrumental response (red = theoretical ref star spectrum ; blue = acquired ref star spectrum with instrumental response correction applied)

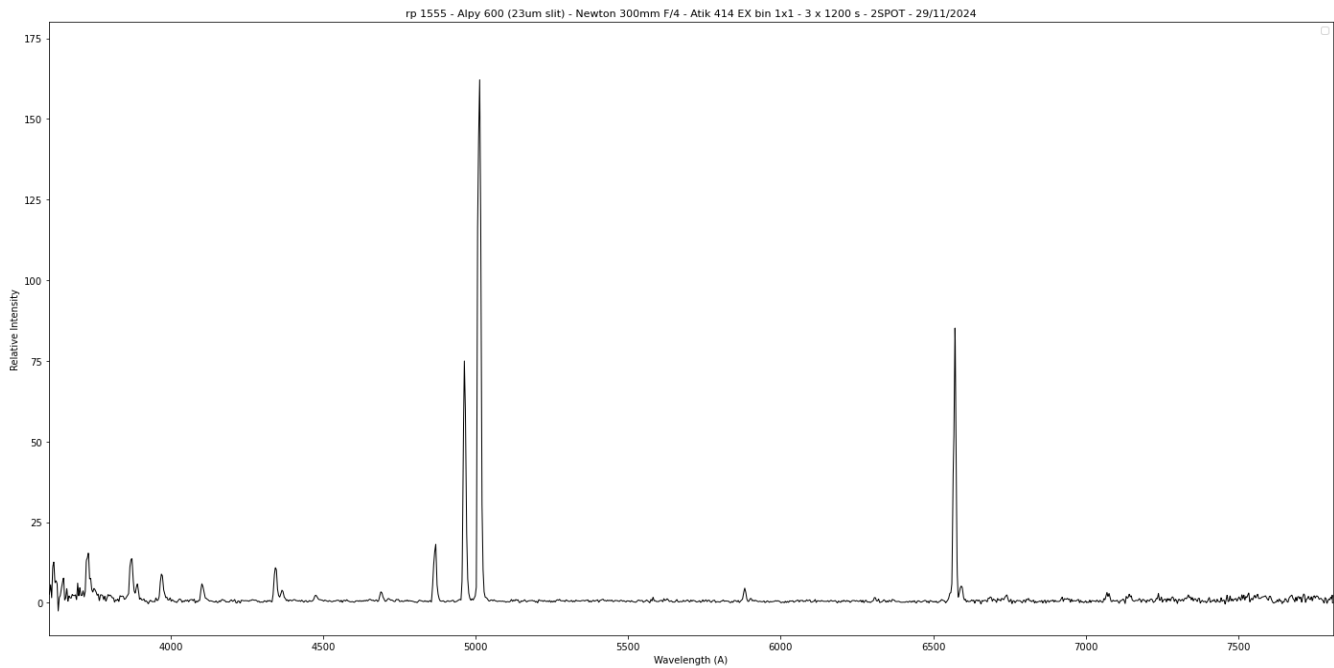


2D Raw spectrum



2D Processed spectrum





Comments

According to HASH, rp1555 is a True PN but the database presents no spectrum.
This spectrum confirms its True PN characteristics.