



Spectroscopic Record Sheet



Details on acquisitions

Object	TelCom 1
Coordinates (J2000)	10:07:02.06 -53:02:48.48
Type	/

Observation date	21.123/02/2025
Weather conditions	/
Observer	2SPOT
Location	Deep Sky Chile (CL)

Mount	10 Micron GM3000 HPS
Telescope	Newton 300mm F/4
Spectroscope	Alpy 600 (23um slit)
Resolution (bin 1x1)	~1nm at 656 nm
Principal camera	Atik 414 EX
Dispersion (bin 1x1)	~0,3 nm/pixel at 656 nm
Cam temperature	-10°C
Binning	2x2
Guiding camera	ASI 178MM
Data acquisition Soft	Prism v11.2.3.21
Data processing soft	ISIS V6.1.1

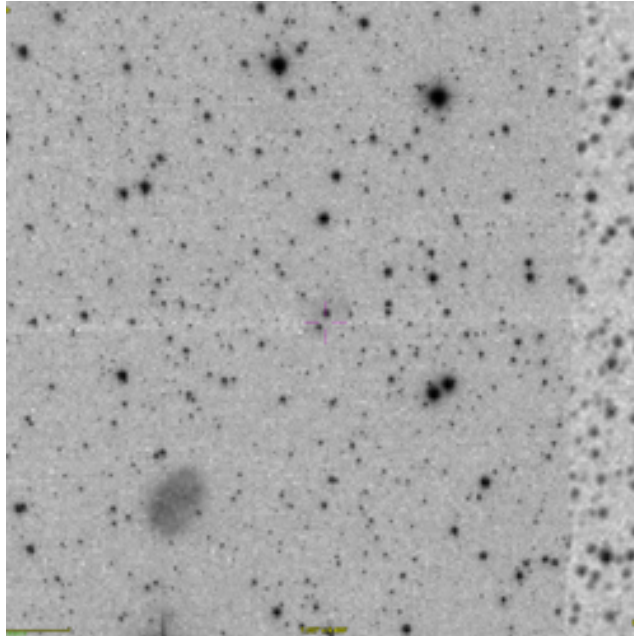
Exposure on object	10 x 1200 s
Master Dark	Corrected
Master Flat	Corrected
Master Offset	Corrected
Neon-Argon calibration	Corrected

Reference star calib.	HD103101_A2V
Exposure on ref star	14 x 5 s
Ref star Sp. date	21.201/02/2025

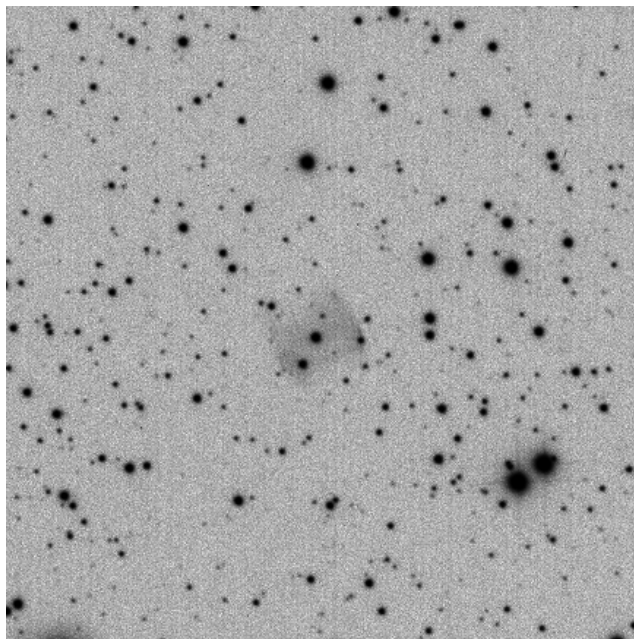


Slit position and images

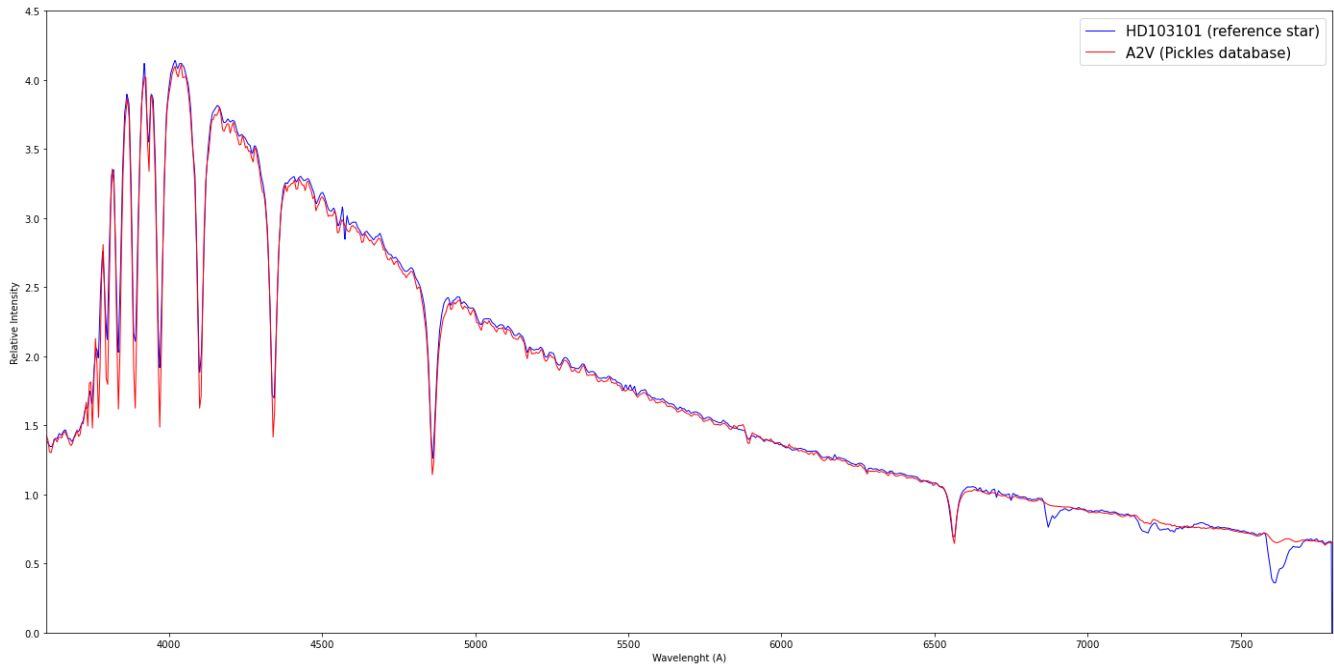
Slit position



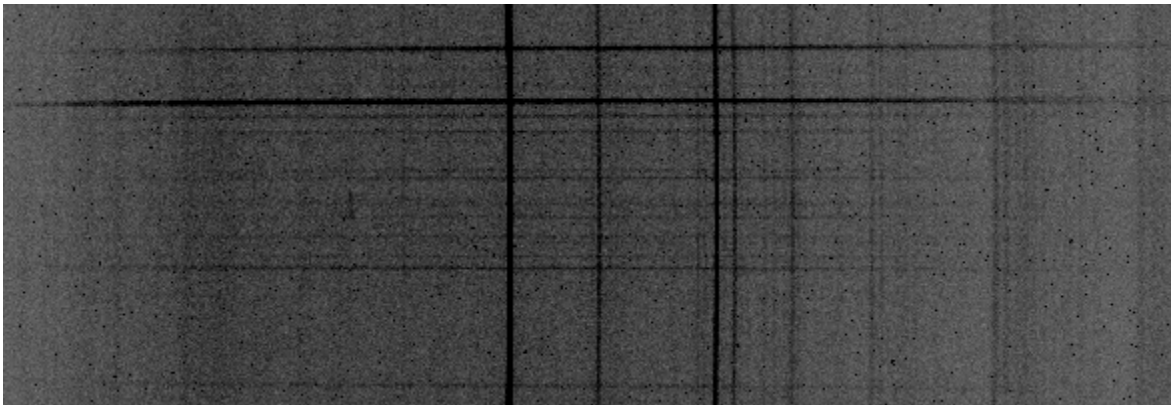
Object picture(s)



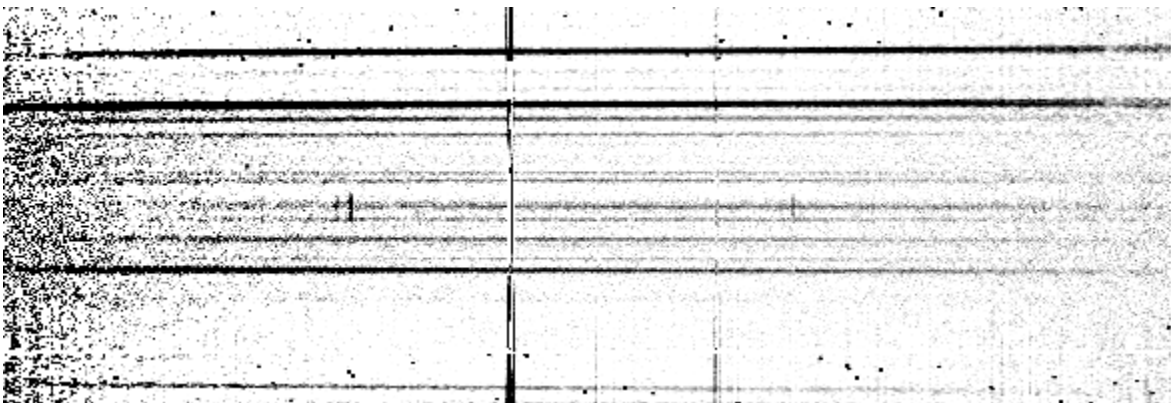
Instrumental response (red = theoretical ref star spectrum ; blue = acquired ref star spectrum with instrumental response correction applied)

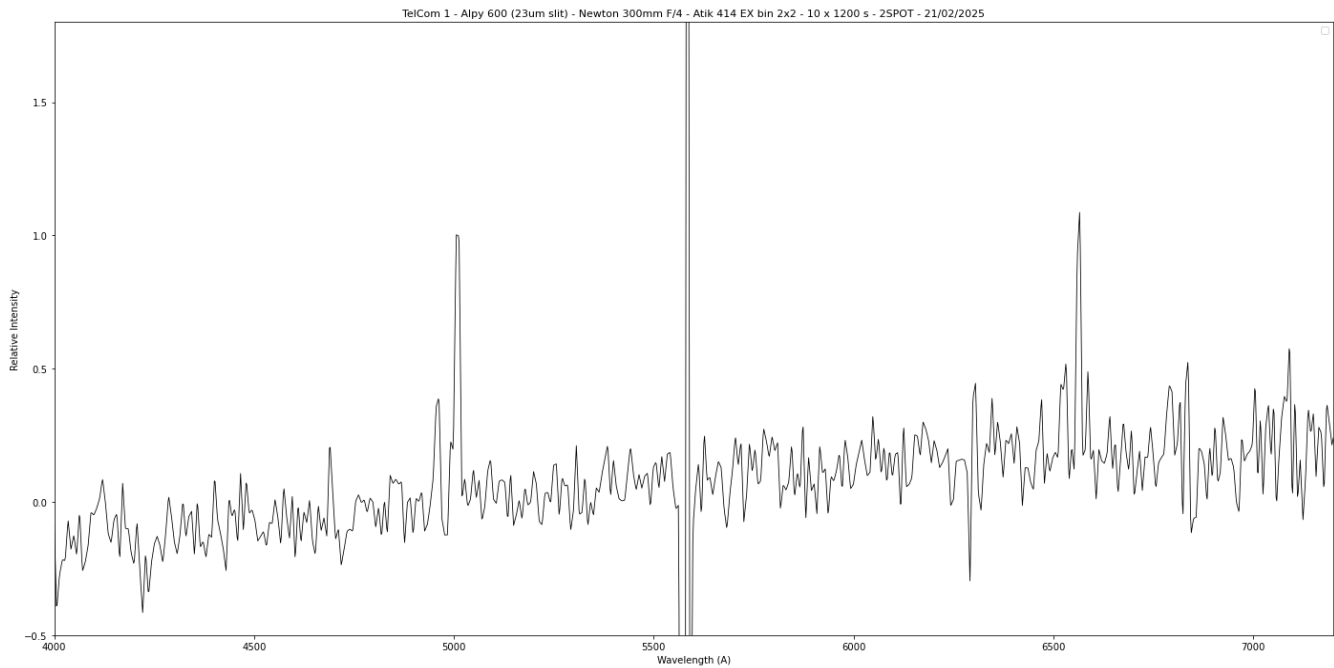


2D Raw spectrum



2D Processed spectrum





Comments

HeII(4686A), [OIII], Halpha and [NII](6583A) lines detected.
 The central star of TelCom 1 is possibly masked.
 Its spectrum shows true PN lines.