



# Spectroscopic Record Sheet



## Details on acquisitions

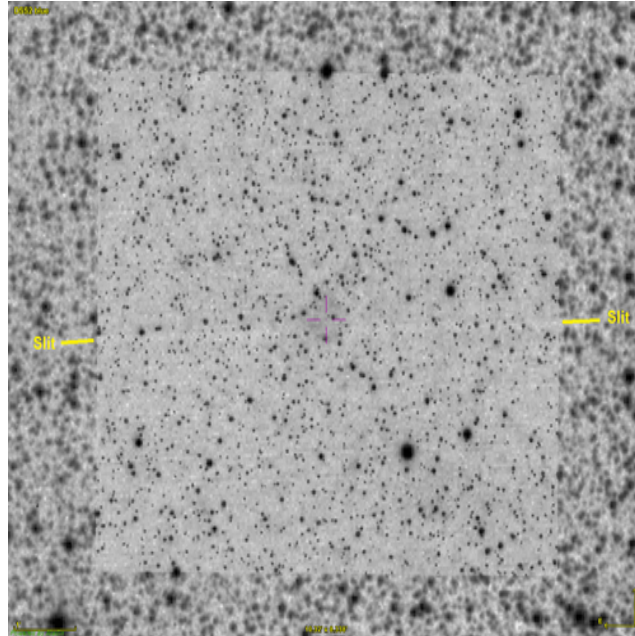
Object	SADR 2
Coordinates (J2000)	13:28:30.93 -65:29:06.80
Type	New candidate

Observation date	25.166/03/2025
Weather conditions	/
Observer	2SPOT
Location	Deep Sky Chile (CL)

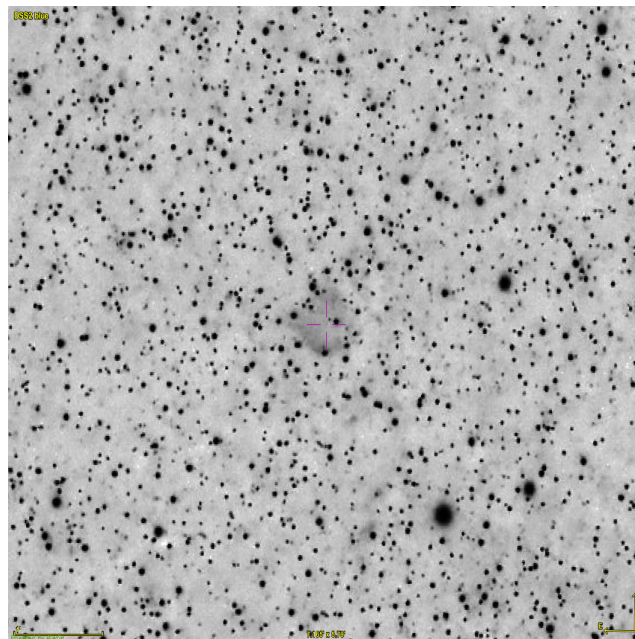
Mount	10 Micron GM3000 HPS
Telescope	Newton 300mm F/4
Spectroscope	Alpy 600 (23um slit)
Resolution (bin 1x1)	~1nm at 656 nm
Principal camera	Atik 414 EX
Dispersion (bin 1x1)	~0,3 nm/pixel at 656 nm
Cam temperature	-10°C
Binning	2x2
Guiding camera	ASI 178MM
Data acquisition Soft	Prism v11.2.3.21
Data processing soft	ISIS V6.1.1

Exposure on object	12 x 1200 s
Master Dark	Corrected
Master Flat	Corrected
Master Offset	Corrected
Neon-Argon calibration	Corrected
Reference star calib.	HD142139_A3V
Exposure on ref star	14 x 5 s
Ref star Sp. date	25.262/03/2025

## Slit position



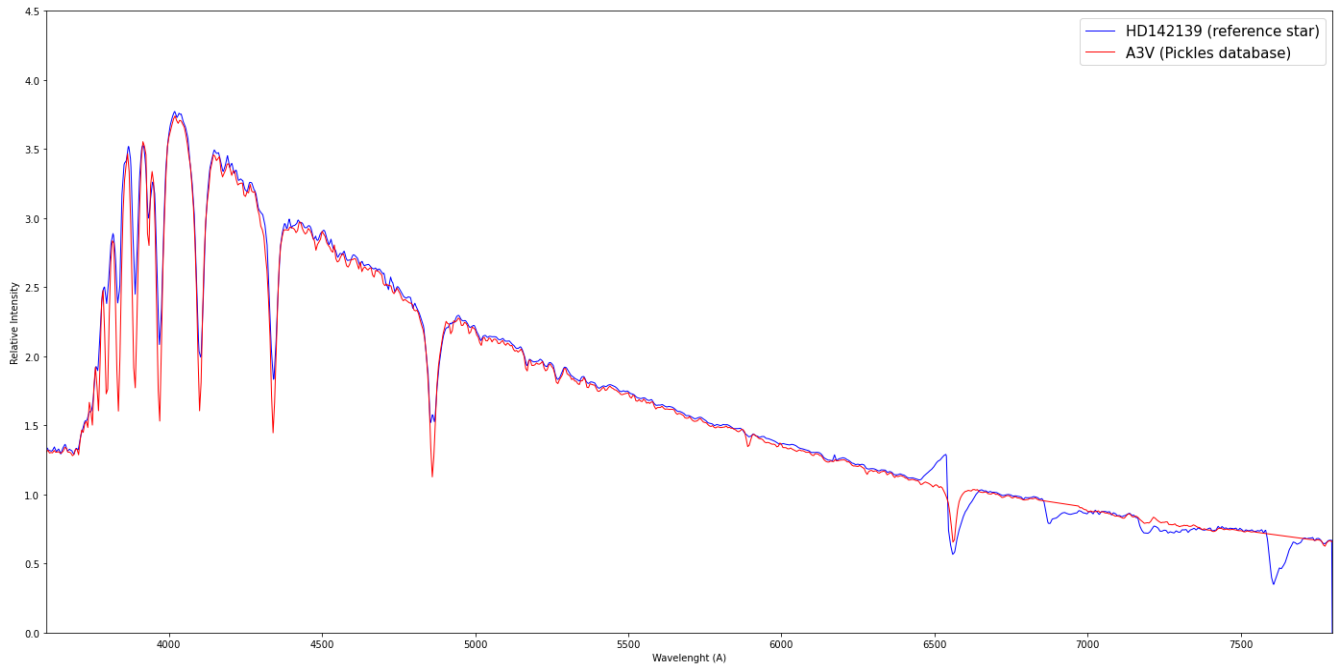
## Object picture(s)



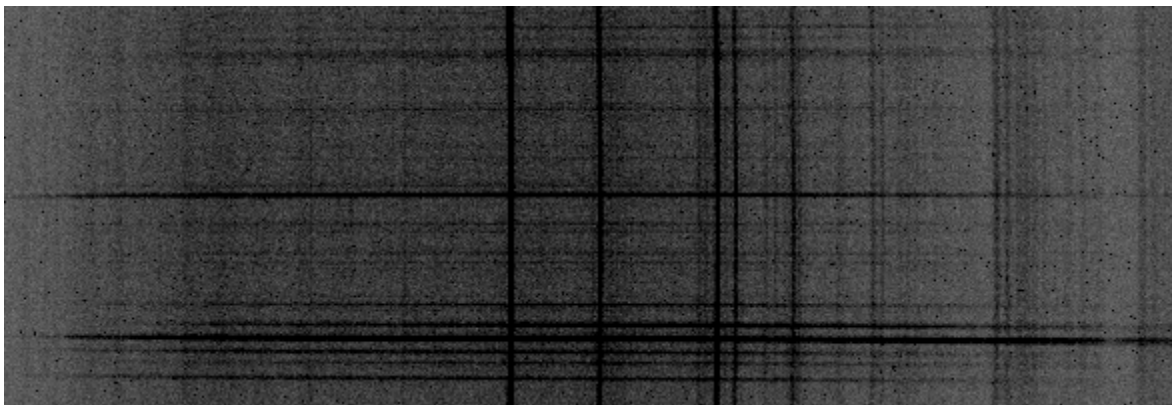


# Instrumental Response and 2D Spectra

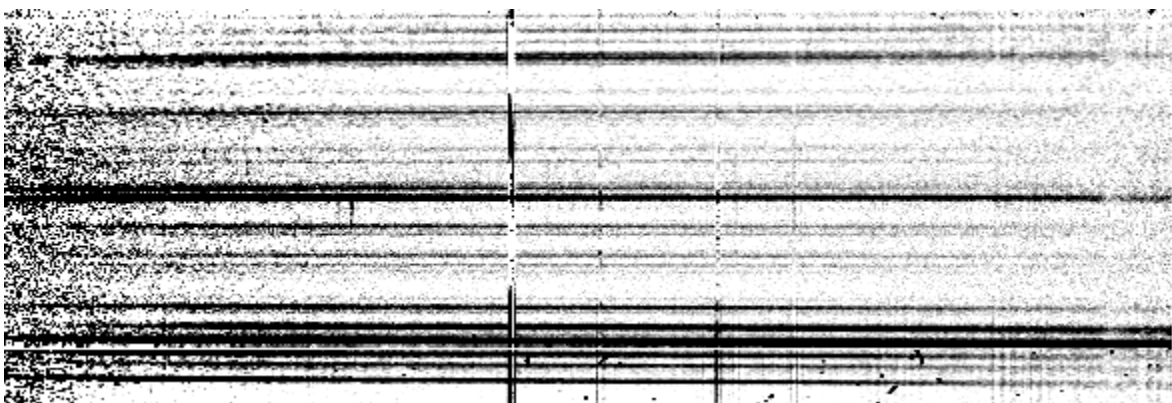
Instrumental response (red = theoretical ref star spectrum ; blue = acquired ref star spectrum with instrumental response correction applied)

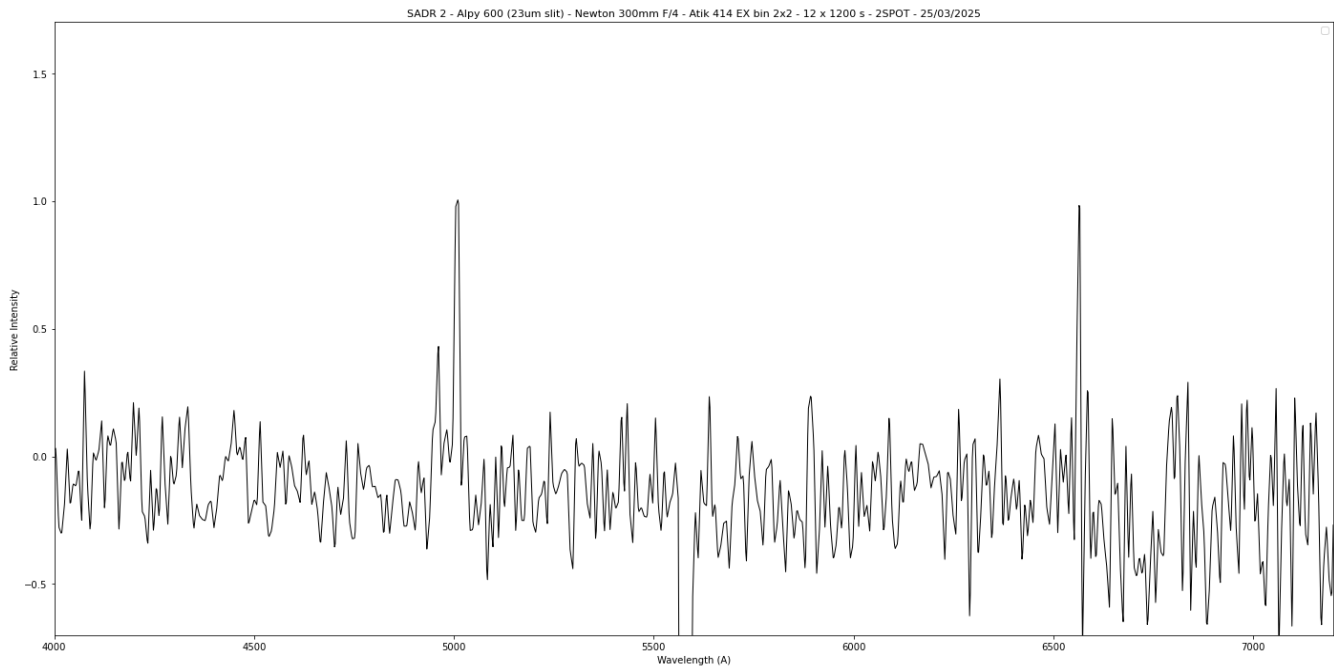


## 2D Raw spectrum



## 2D Processed spectrum





## Comments

[OIII] and Halpha detected.

Slit positioned on the highest contrast [OIII] signal towards the bottom of the nebula.

SADR 2 could be a true PN.