



# Spectroscopic Record Sheet



## Details on acquisitions

Object	RasCapBlo 1
Coordinates (J2000)	13:58:34.31 -58:58:57.20
Type	Likely PN

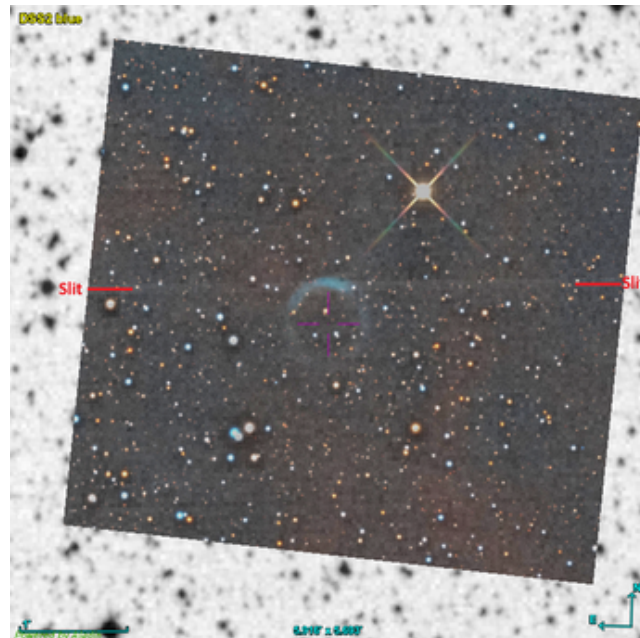
Observation date	7.993/06/2026
Weather conditions	/
Observer	2SPOT
Location	Deep Sky Chile (CL)

Mount	10 Micron GM3000 HPS
Telescope	Newton 300mm F/4
Spectroscope	Alpy 600 (23um slit)
Resolution (bin 1x1)	~1nm at 656 nm
Principal camera	Atik 414 EX
Dispersion (bin 1x1)	~0,3 nm/pixel at 656 nm
Cam temperature	-10°C
Binning	2x2
Guiding camera	ASI 178MM
Data acquisition Soft	Prism v11
Data processing soft	ISIS V6.1.1

Exposure on object	4 x 1200 s
Master Dark	Corrected
Master Flat	Corrected
Master Offset	Corrected
Neon-Argon calibration	Corrected

Reference star calib.	HD113902_B8V
Exposure on ref star	5 x 30 s
Ref star Sp. date	8.025/06/2026

## Slit position



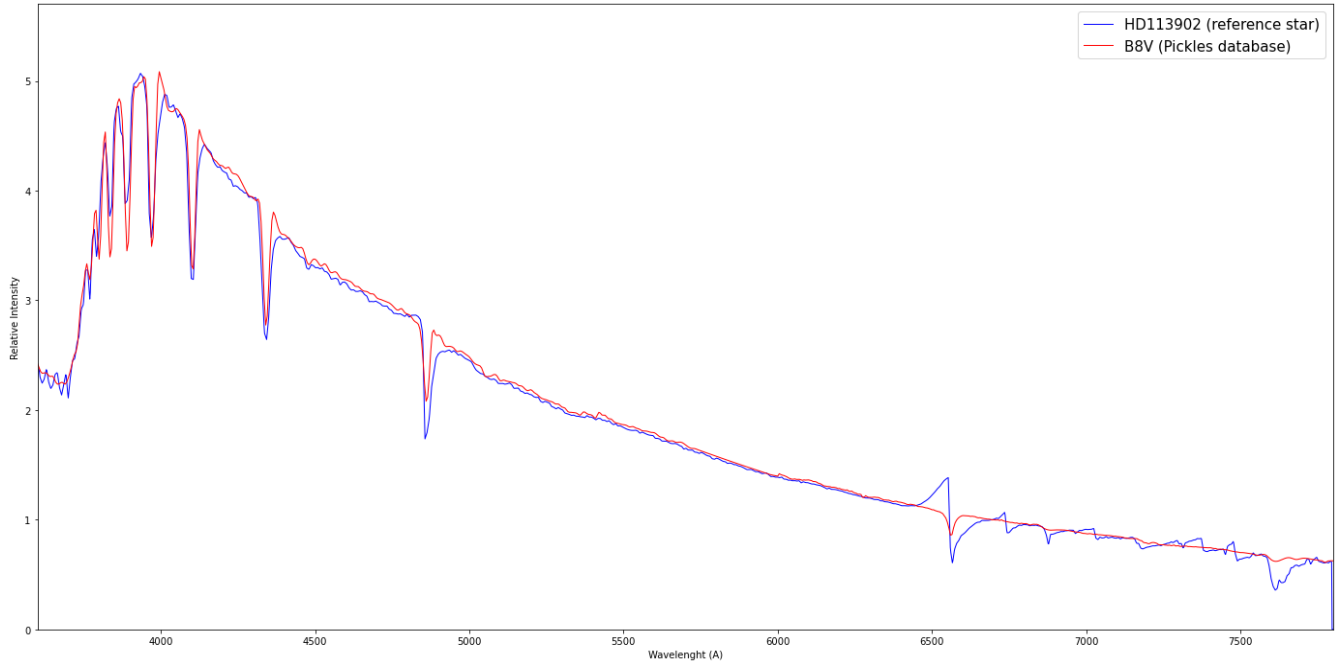
## Object picture(s)



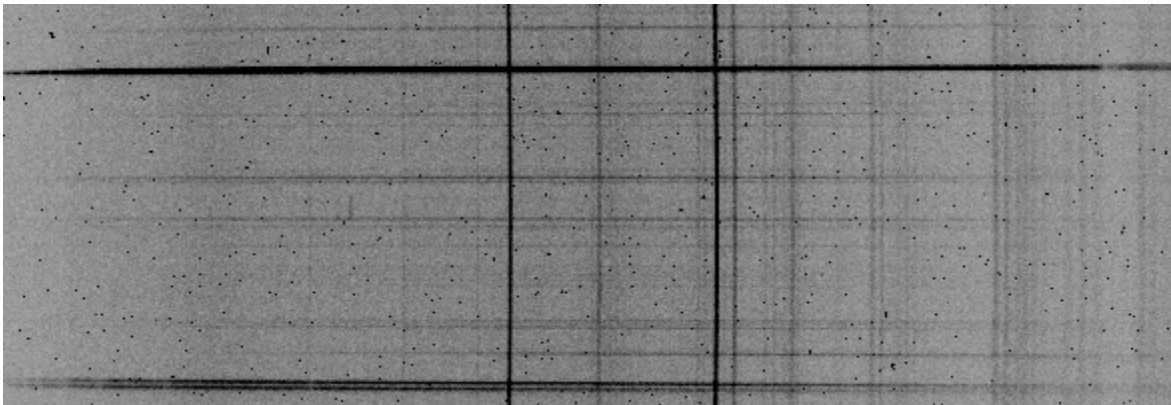


# Instrumental Response and 2D Spectra

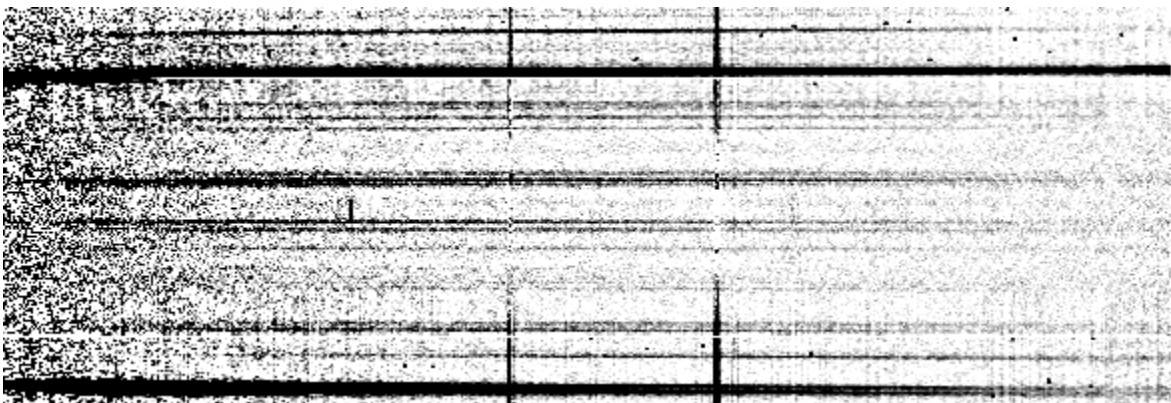
Instrumental response (red = theoretical ref star spectrum ; blue = acquired ref star spectrum with instrumental response correction applied)

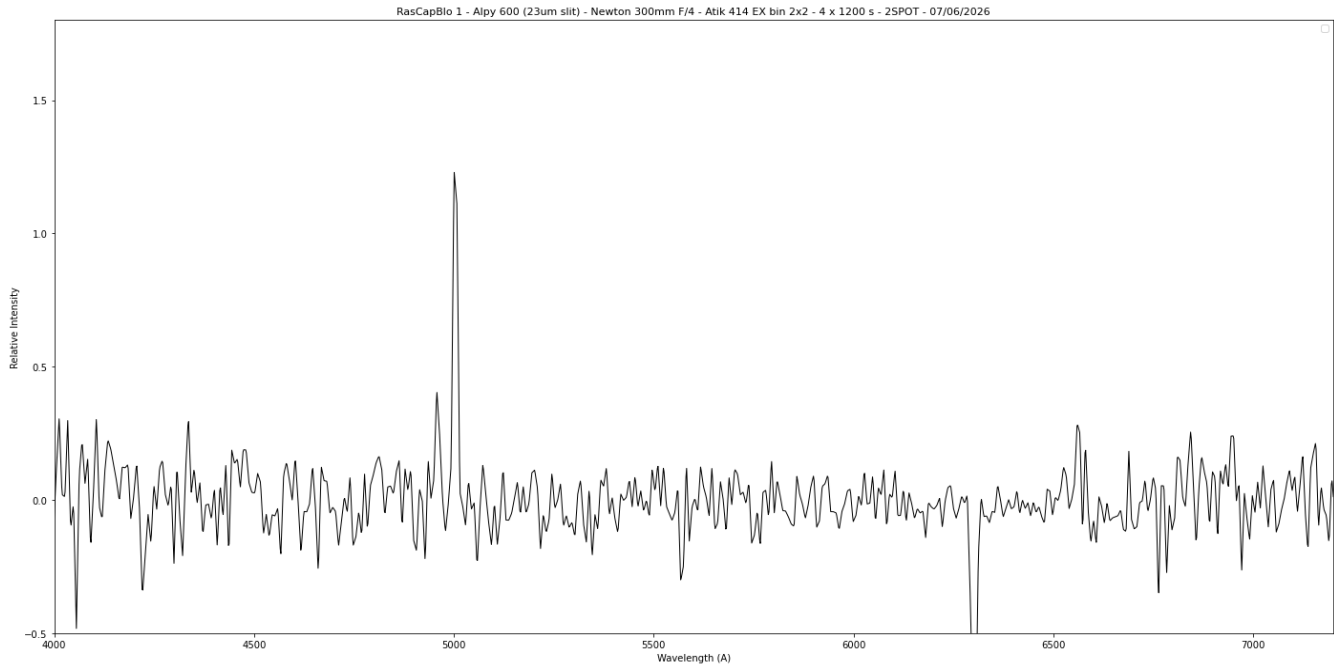


## 2D Raw spectrum



## 2D Processed spectrum





## Comments

New object classified as Likely PN.

Slit centered in the contrasting region north of the RasCapBlo 1 ring.

[OIII] and Halpha lines detected.

RasCapBlo 1 is certainly a true PN.