



# Spectroscopic Record Sheet



## Details on acquisitions

Object	PreRa 1
Coordinates (J2000)	18:00:11.91 -22:10:48.98
Type	New candidate

Observation date	19.333/04/2024
Weather conditions	/
Observer	2SPOT
Location	Deep Sky Chile (CL)

Mount	10 Micron GM3000 HPS
Telescope	Newton 300mm F/4
Spectroscope	Alpy 600 (23um slit)
Resolution (bin 1x1)	~1nm at 656 nm
Principal camera	Atik 414 EX
Dispersion (bin 1x1)	~0,3 nm/pixel at 656 nm
Cam temperature	-10°C
Binning	2x2
Guiding camera	ASI 178MM
Data acquisition Soft	Prism v11.2.3.21
Data processing soft	ISIS V6.1.1

Exposure on object	5 x 1200 s
Master Dark	Corrected
Master Flat	Corrected
Master Offset	Corrected
Neon-Argon calibration	Corrected

Reference star calib.	HD188899_A2V
Exposure on ref star	14 x 4 s
Ref star Sp. date	19.405/04/2024

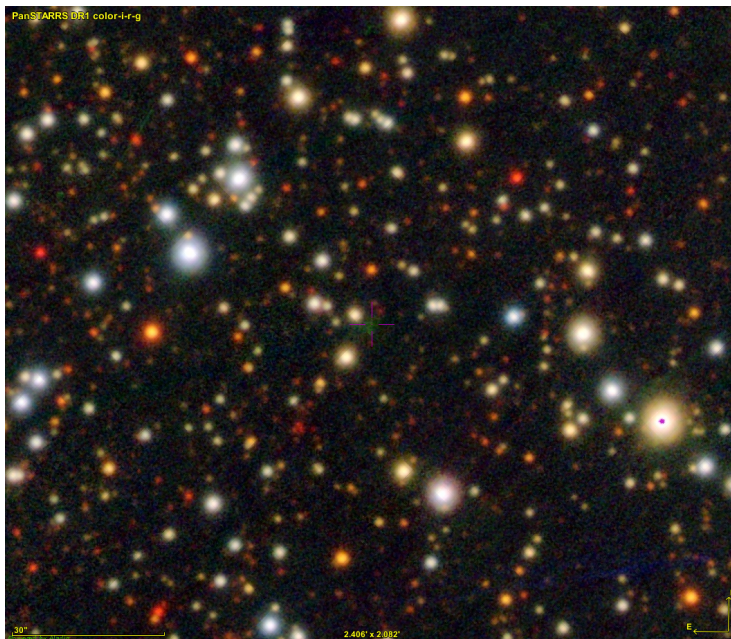


## Slit position and images

### Slit position



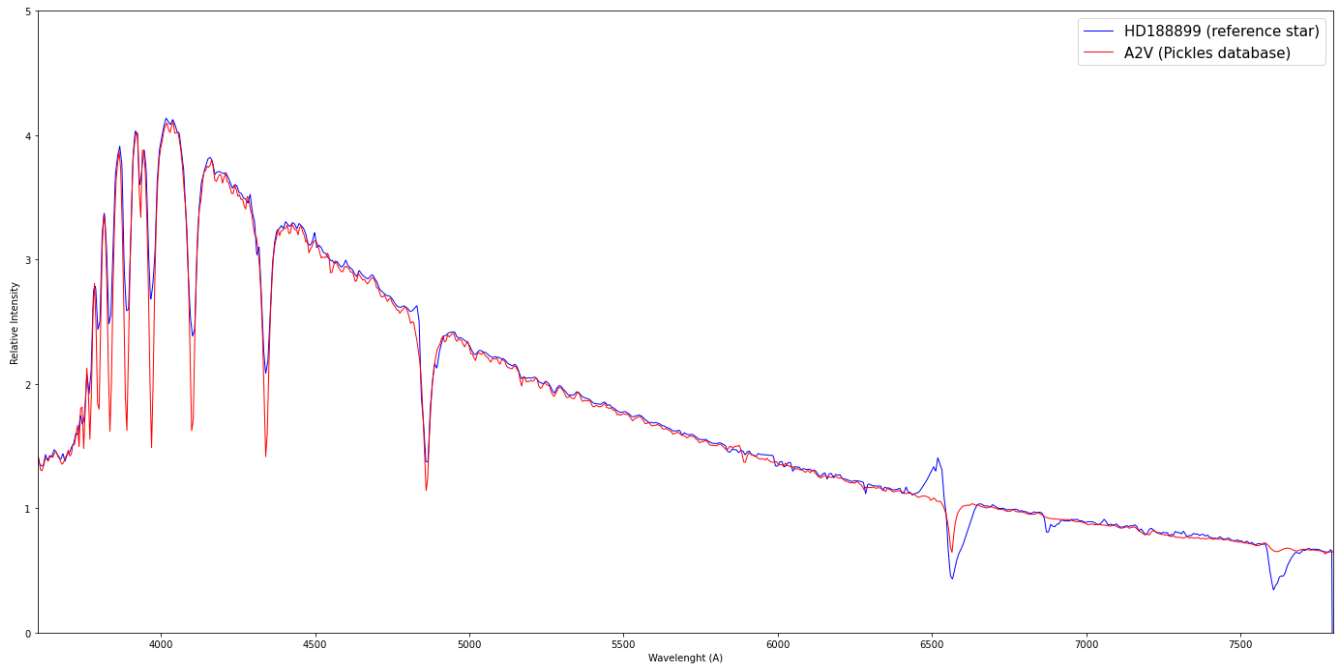
### Object picture(s)



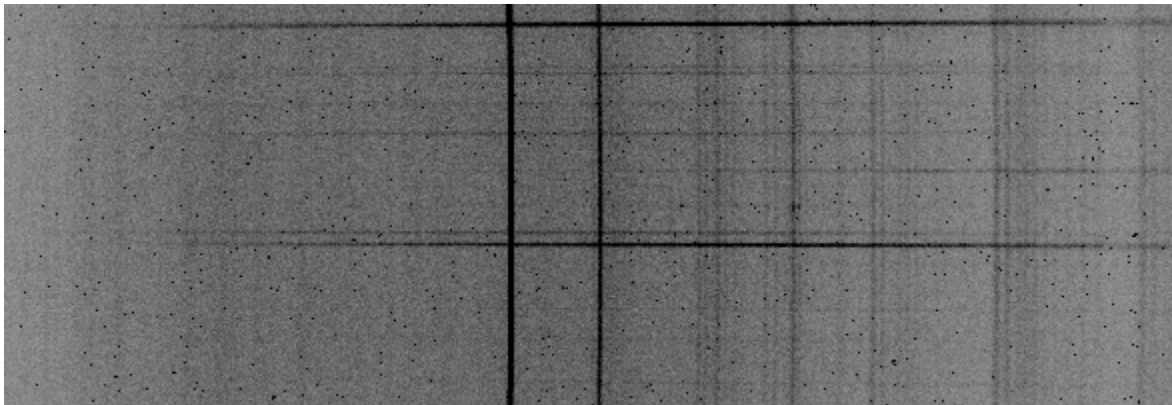


# Instrumental Response and 2D Spectra

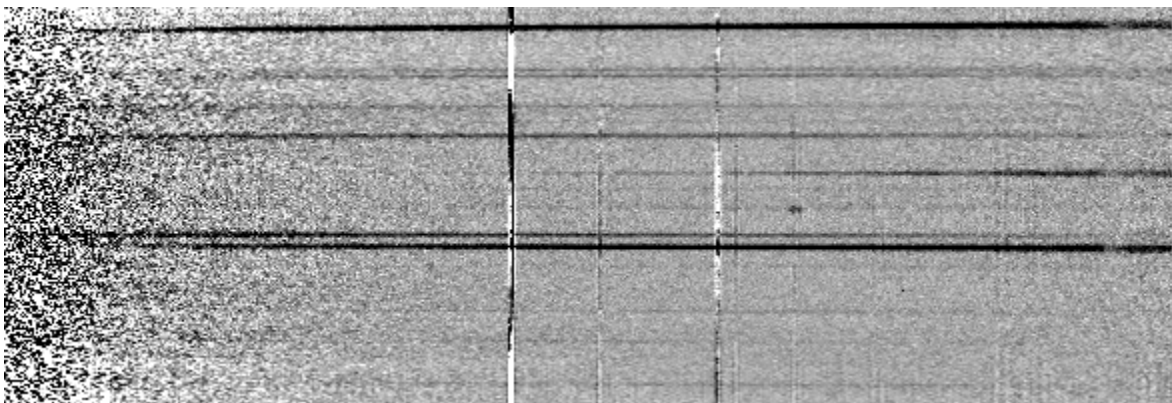
Instrumental response (red = theoretical ref star spectrum ; blue = acquired ref star spectrum with instrumental response correction applied)

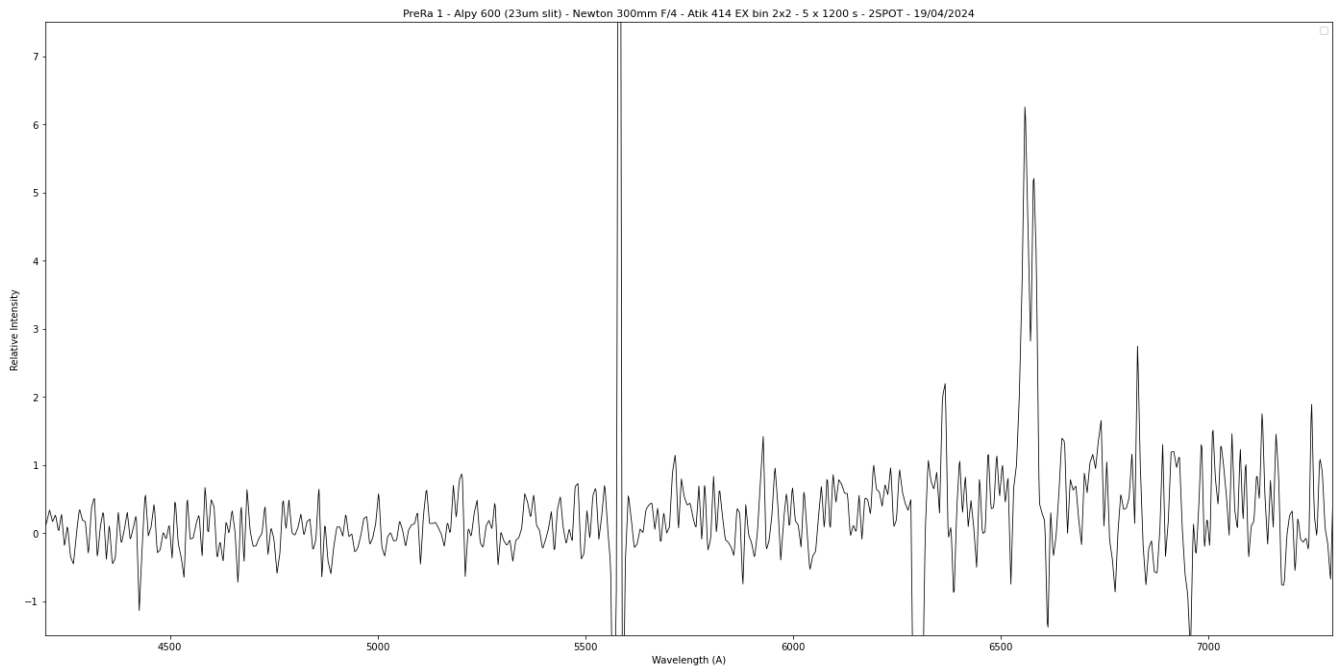


## 2D Raw spectrum



## 2D Processed spectrum





## Comments

Only H $\alpha$  and [NII] lines detected. Strong [NII] line, no [OIII].  
PreRa 1 may be a true PN like RPZM 31.