



Spectroscopic Record Sheet



Details on acquisitions

Object	Pei 1
Coordinates (J2000)	05:25:46.96 -69:52:57.20
Type	/

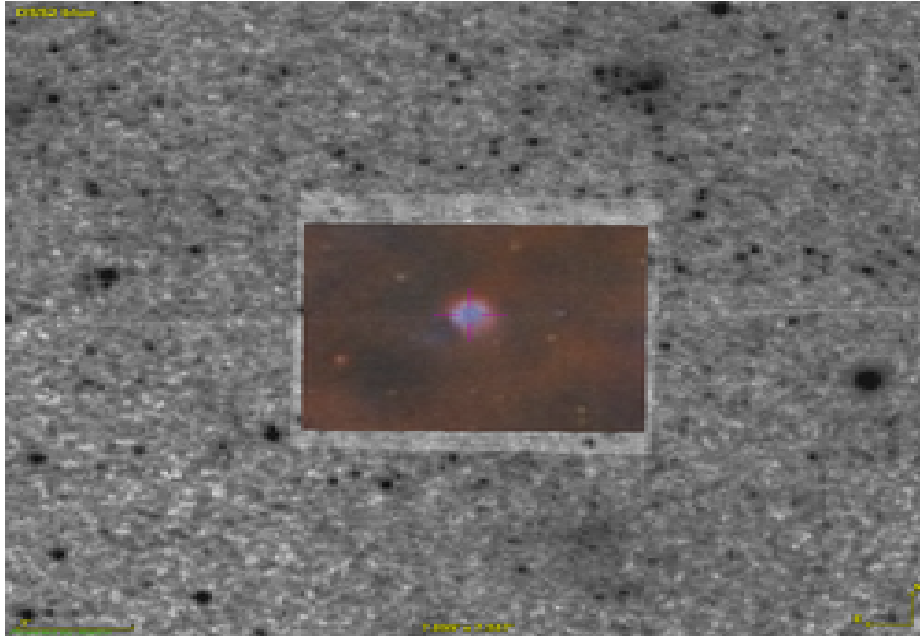
Observation date	7.107/12/2023
Weather conditions	/
Observer	2SPOT
Location	Deep Sky Chile (CL)

Mount	10 Micron GM3000 HPS
Telescope	Newton 300mm F/4
Spectroscope	Alpy 600 (23um slit)
Resolution (bin 1x1)	~1nm at 656 nm
Principal camera	Atik 414 EX
Dispersion (bin 1x1)	~0,3 nm/pixel at 656 nm
Cam temperature	-10°C
Binning	2x2
Guiding camera	Atik 314L+
Data acquisition Soft	Prism v11.2.3.21
Data processing soft	ISIS V6.1.1

Exposure on object	7 x 1200 s
Master Dark	Corrected
Master Flat	Corrected
Master Offset	Corrected
Neon-Argon calibration	Corrected

Reference star calib.	HD42525_A0V
Exposure on ref star	14 x 3 s
Ref star Sp. date	7.168/12/2023

Slit position



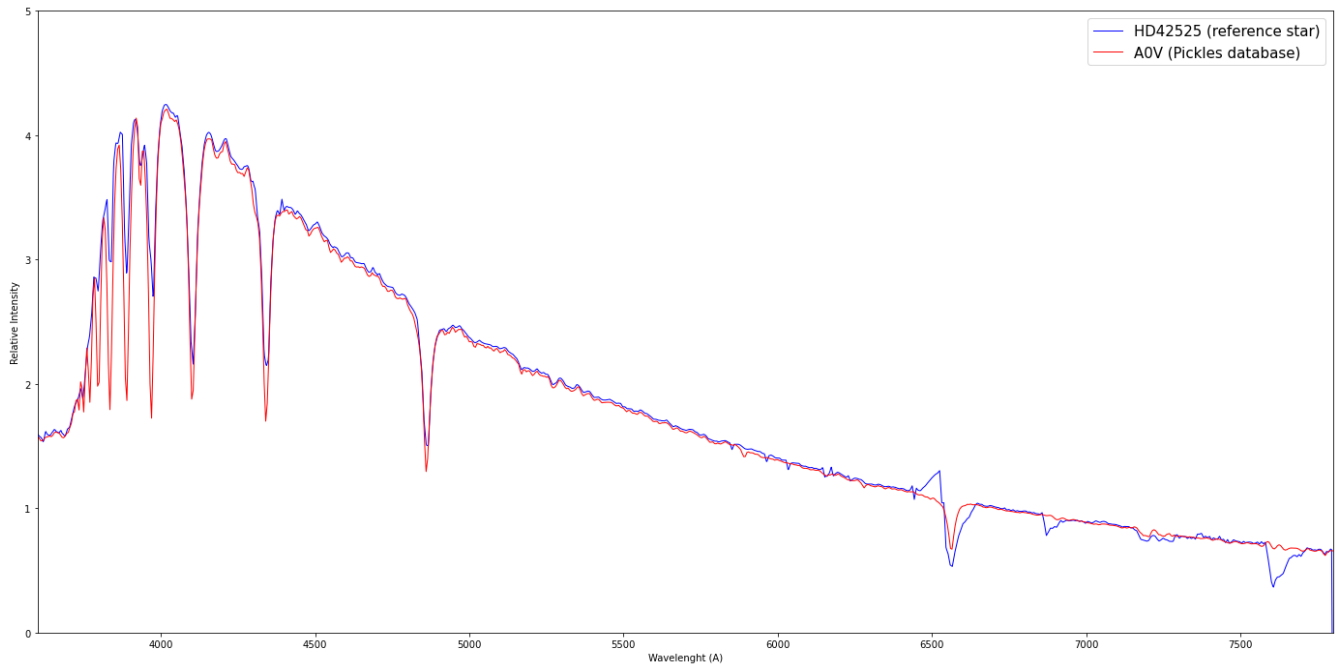
Object picture(s)



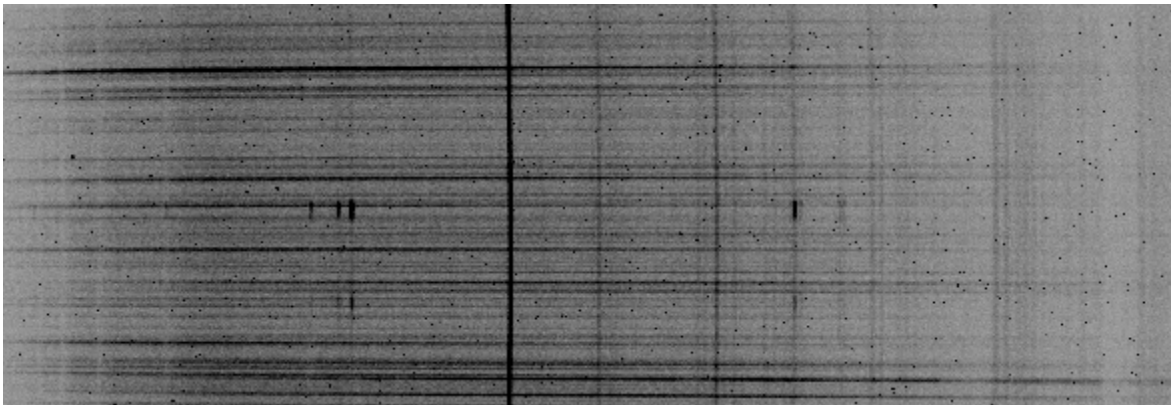


Instrumental Response and 2D Spectra

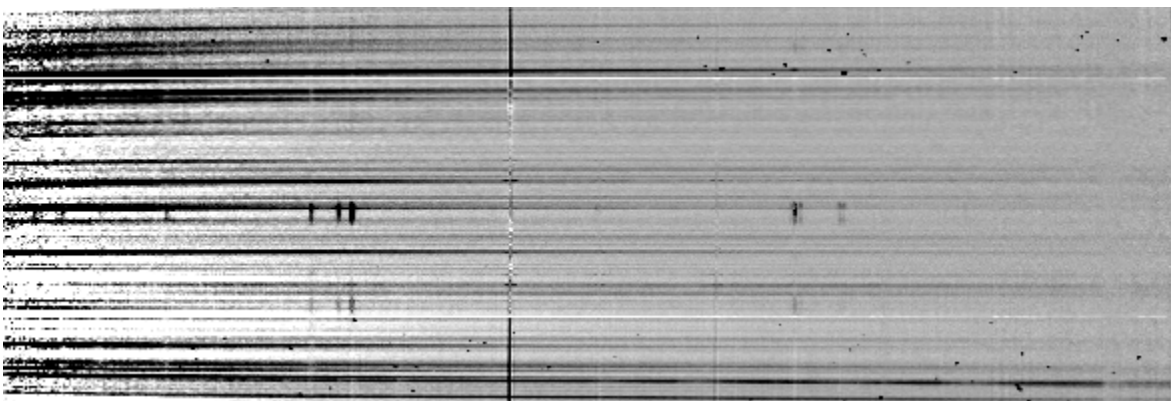
Instrumental response (red = theoretical ref star spectrum ; blue = acquired ref star spectrum with instrumental response correction applied)

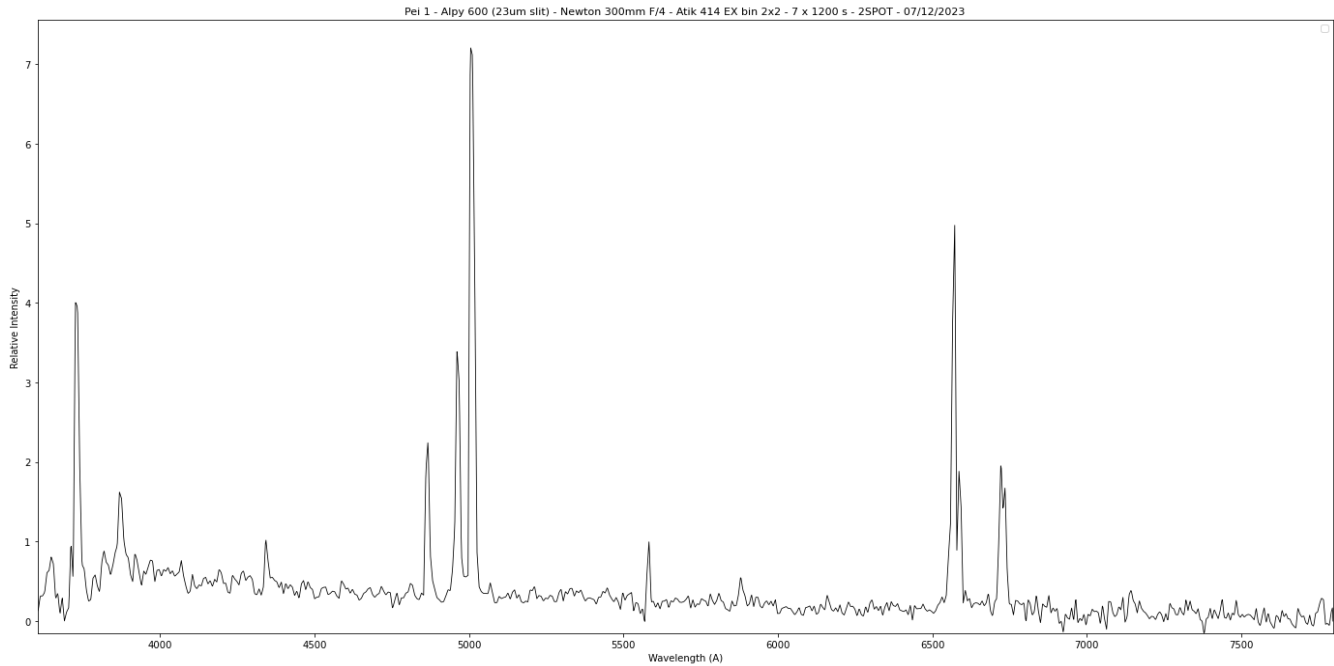


2D Raw spectrum



2D Processed spectrum





Comments

Object in the LMC field of view.

Many emission lines observed ([SII], [NII], Halpha, Hel, [OIII], Hbeta, Hgamma, 3871A ?, [OII]).