



Spectroscopic Record Sheet



Details on acquisitions

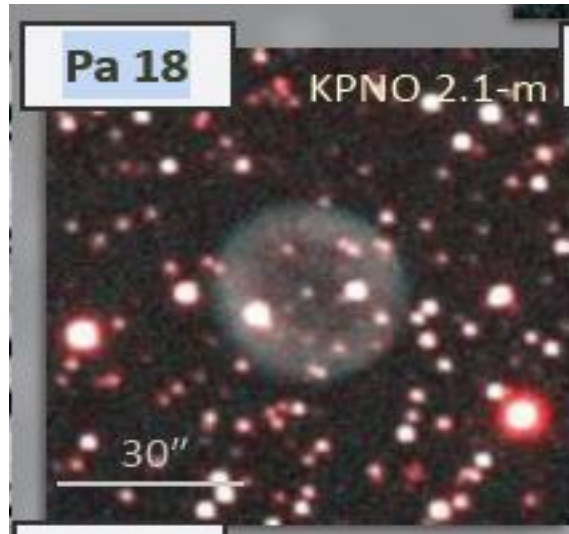
Object	Pa18
Coordinates (J2000)	18:42:01.20 +08:46:25.20
Type	PN Candidate

Observation date	12.851/09/2020 (d/m/y)
Meteorological conditions	20°C
Observer	L.Mulato
Location	Cornillon France

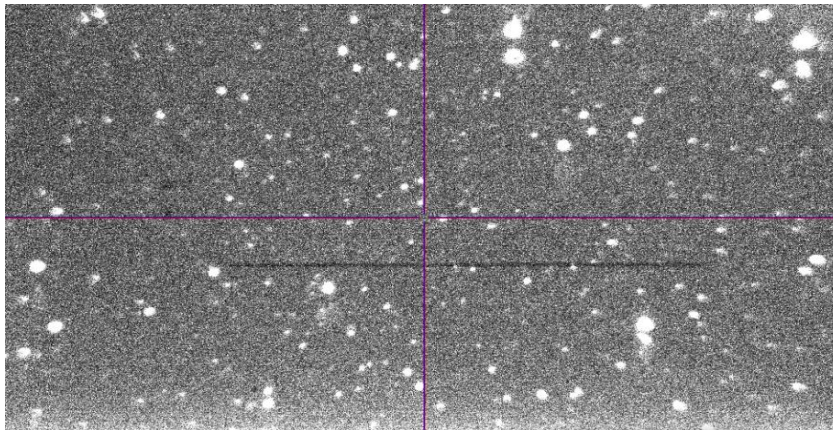
Mount	NEQ6
Telescope	Newton Skywatcher 200 mm F/5
Spectrograph	Alpy 600 - 23 μ m slit
Resolution (bin 1x1)	~ 1 Å at $\lambda 656$ nm
Science camera	ATIK 414 EX
Dispersion (bin 1x1)	$\sim 0,3$ nm/pixel at $\lambda 656$ nm
Cam Temperature	0 °C
Binning	2x2
Guiding camera	ASI290 MM non cooled
Data acquisition Soft	PRISM V10
Data processing Soft	Isis V5.9.3

Exposure on object	7	x	1200	s
Master Dark date	28/06/2020	(d/m/y)		
Dark Exposure	18	x	1200	s
Dark Temperature	0	°C		
Master Offset date	22/05/2020	(d/m/y)		
Master Flat date	20/06/2020	(d/m/y)		
Neon-Argon calib. date	13/09/2020	(d/m/y)		
Reference star calib.	HD182919			
Exposure on ref star	20	x	8	s
Ref Star Sp. date	13.863/09/2020			

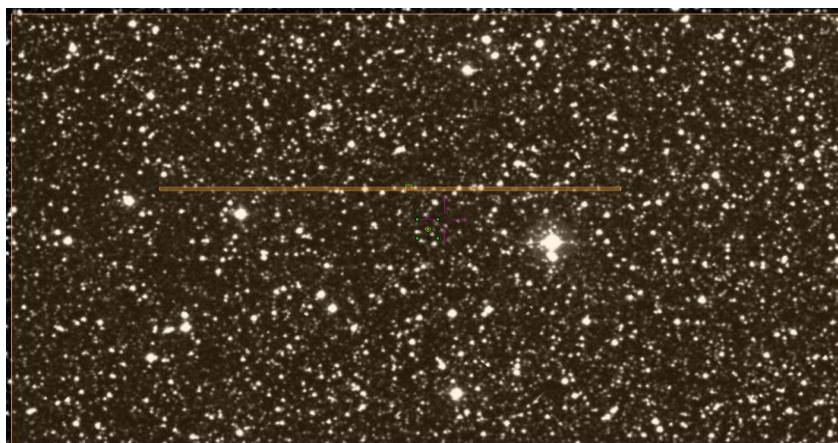
Image KPNO



Slit position autoguider



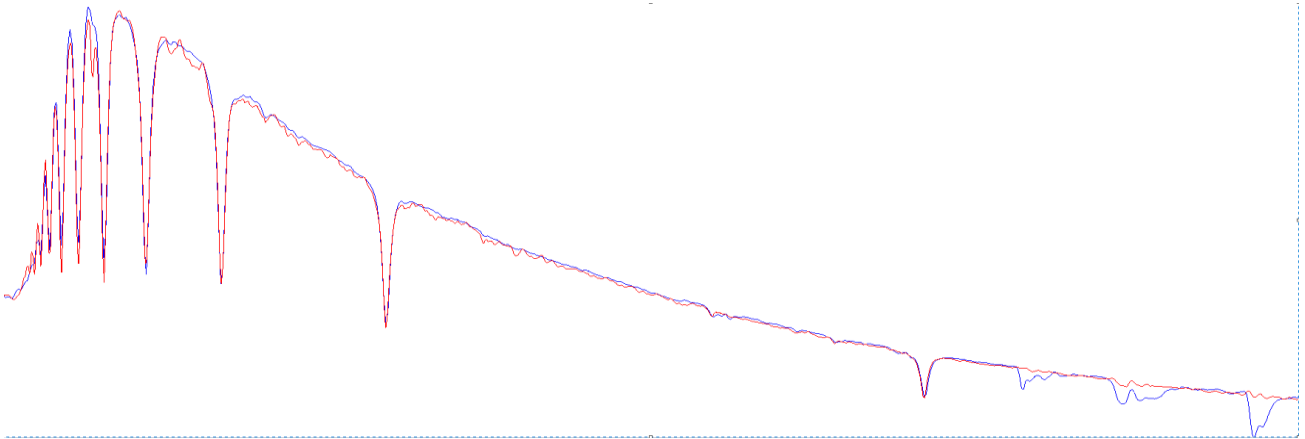
Slit position IPHAS



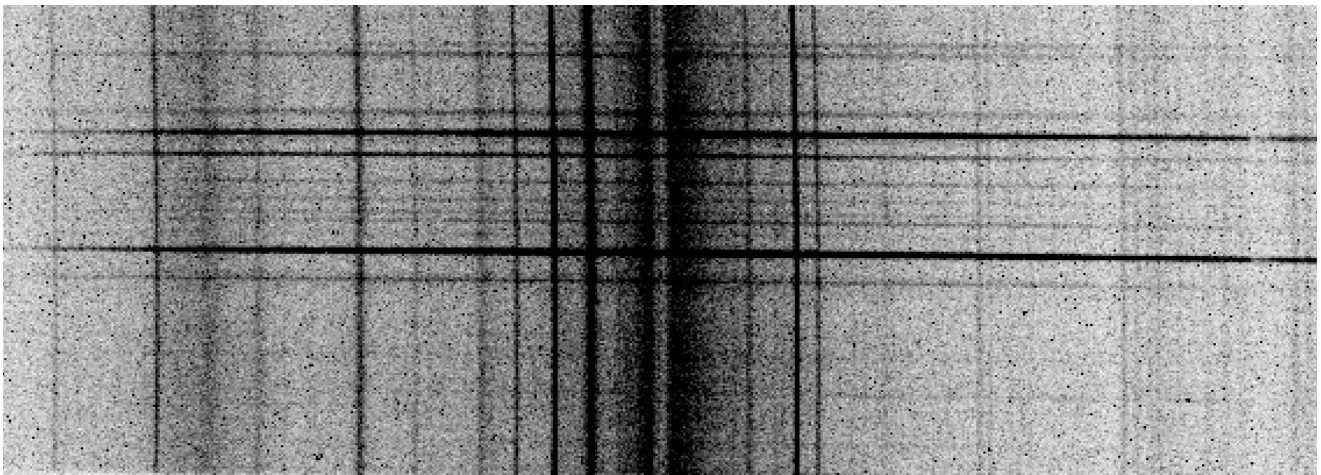


Instrumental Response and 2D Spectrum

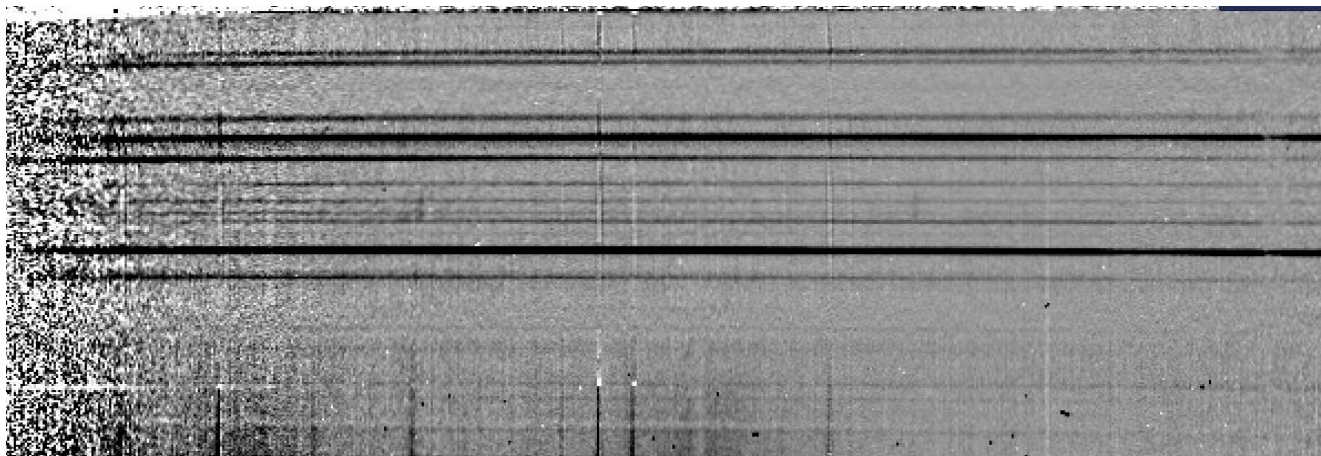
Instrumental response (red = theoretical ref star spectrum ; blue = acquired ref star spectrum with instrumental response correction applied)

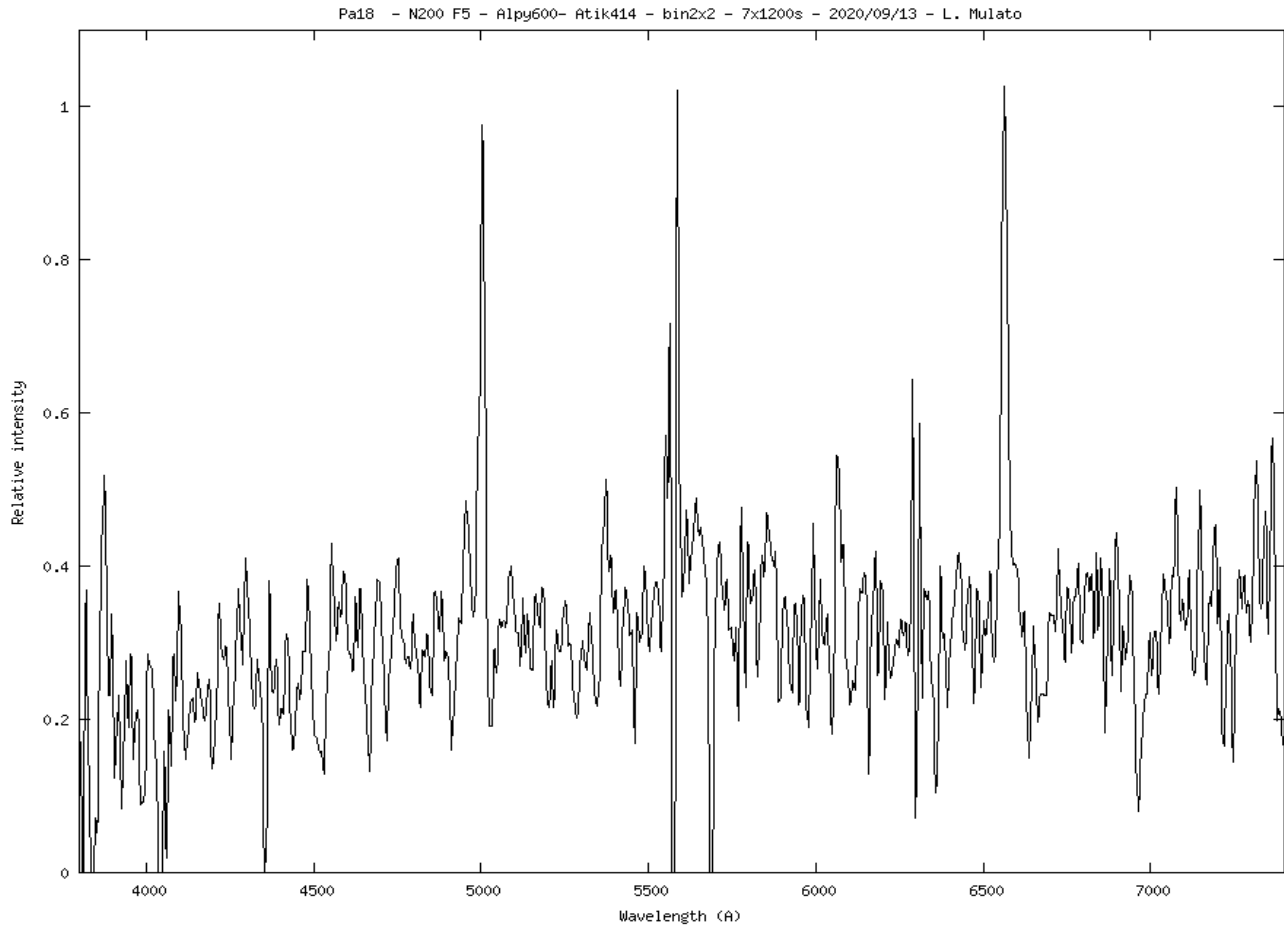


2D Raw spectrum



Processed 2D spectrum





Comments :

Faint object, hard to process. Needs a better spectrum.

Detected lines : [O III], no H-beta, H-alpha.

Pa18 is a PN.