



Spectroscopic Record Sheet



Details on acquisitions

Object	DeGaPe Objet 2
Coordinates (J2000)	08:59:13.20 -45:45:01.60
Type	New candidate

Observation date	21.767/10/2022
Weather conditions	/
Observer	2SPOT
Location	Deep Sky Chile (CL)

Mount	10 Micron GM3000 HPS
Telescope	Ritchey-Chrétien RC12
Spectroscope	Alpy 600 (23um slit)
Resolution (bin 1x1)	~1nm at 656 nm
Principal camera	Atik 414 EX
Dispersion (bin 1x1)	~0,3 nm/pixel at 656 nm
Cam temperature	-10°C
Binning	/
Guiding camera	Atik 314L+
Data acquisition Soft	Prism v10.4.12.911
Data processing soft	ISIS V6.1.1

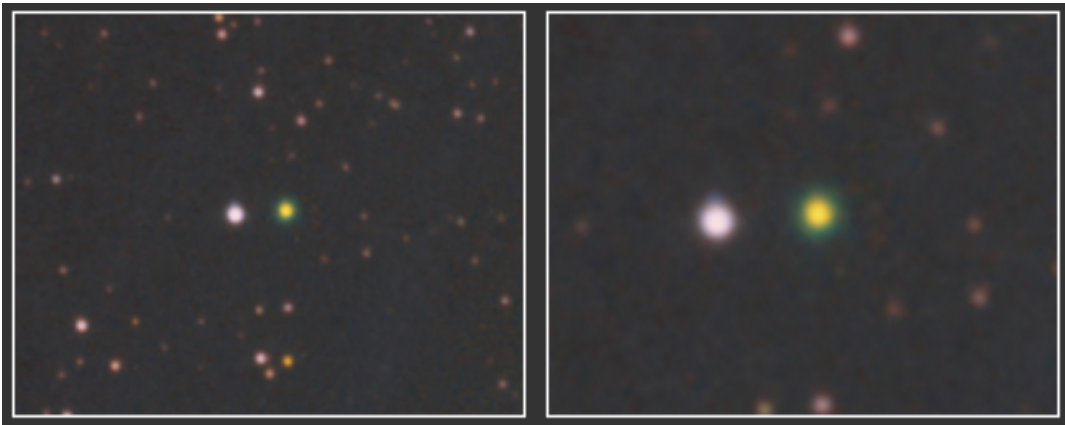
Exposure on object	3 x 1200 s
Master Dark	Corrected
Master Flat	Corrected
Master Offset	Corrected
Neon-Argon calibration	Corrected

Reference star calib.	/_/_
Exposure on ref star	/
Ref star Sp. date	/

Slit position



Object picture(s)



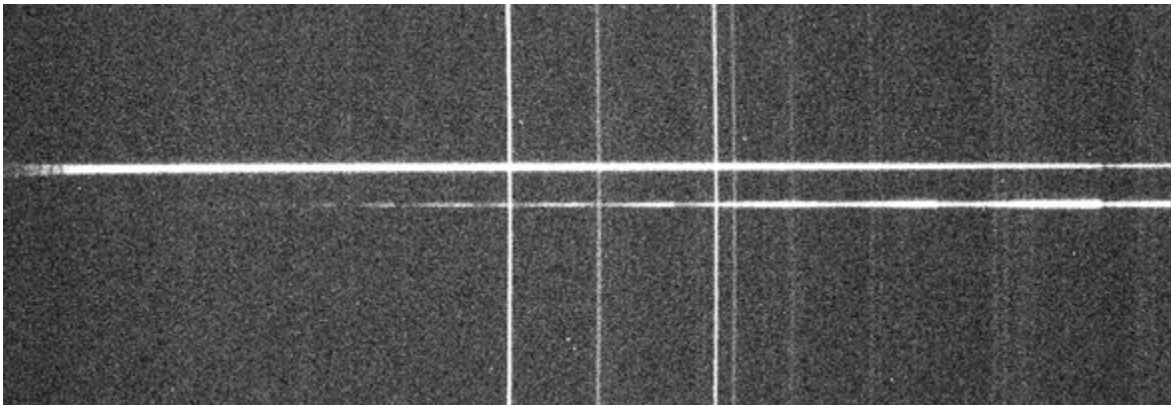


Instrumental Response and 2D Spectra

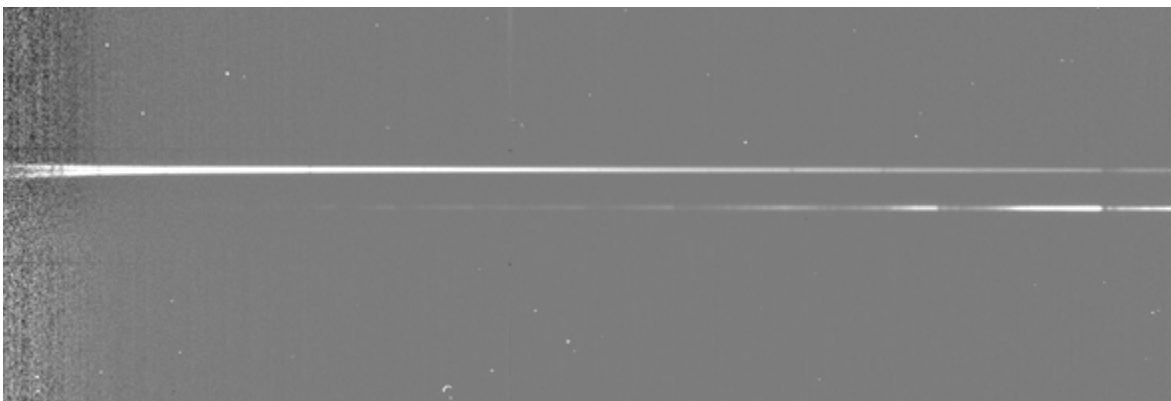
Instrumental response (red = theoretical ref star spectrum ; blue = acquired ref star spectrum with instrumental response correction applied)

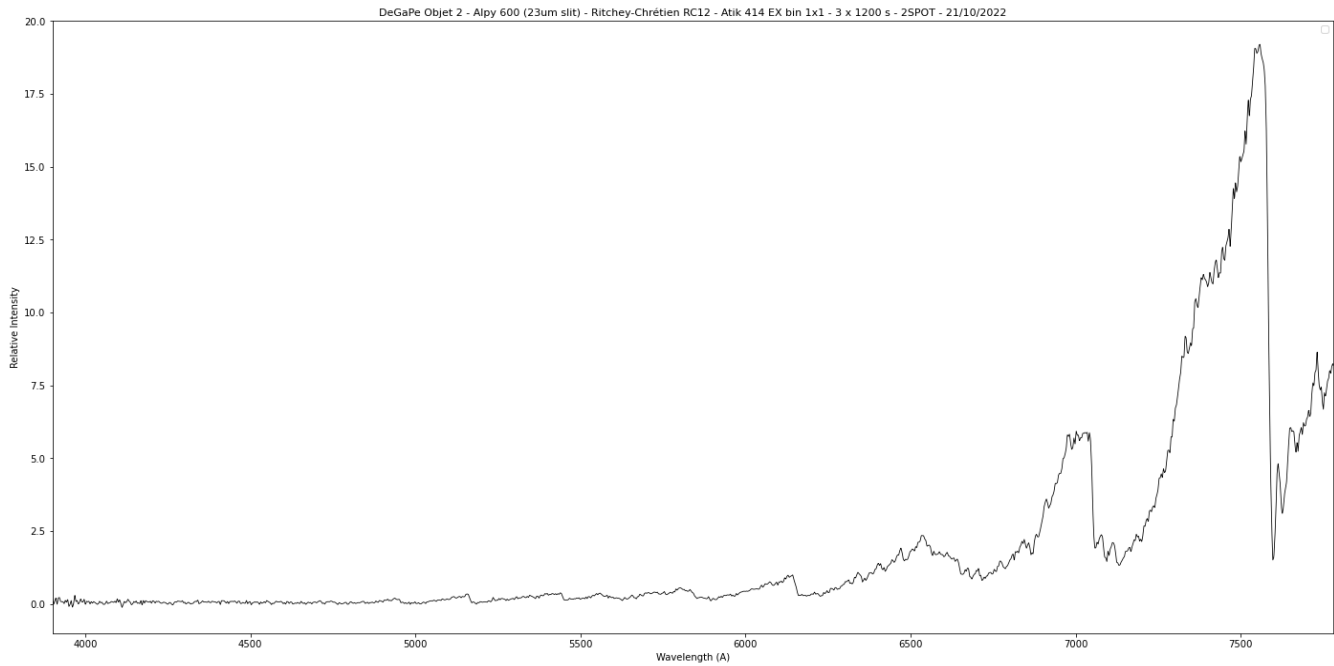
No reference star was used here
but a standard instrumental response
taken at the same height as the target.

2D Raw spectrum



2D Processed spectrum





Comments

DeGaPe Objet 2 doesn't show any PN characteristics but shows a Mira type.