



Spectroscopic Record Sheet



Details on acquisitions

Object	DeGaPe 6
Coordinates (J2000)	16:50:32.40 -47:42:29.30
Type	New candidate

Observation date	2.307/03/2025
Weather conditions	/
Observer	2SPOT
Location	Deep Sky Chile (CL)

Mount	10 Micron GM3000 HPS
Telescope	Newton 300mm F/4
Spectroscope	Alpy 600 (23um slit)
Resolution (bin 1x1)	~1nm at 656 nm
Principal camera	Atik 414 EX
Dispersion (bin 1x1)	~0,3 nm/pixel at 656 nm
Cam temperature	-10°C
Binning	1x1
Guiding camera	ASI 178MM
Data acquisition Soft	Prism v11.2.3.21
Data processing soft	ISIS V6.1.1

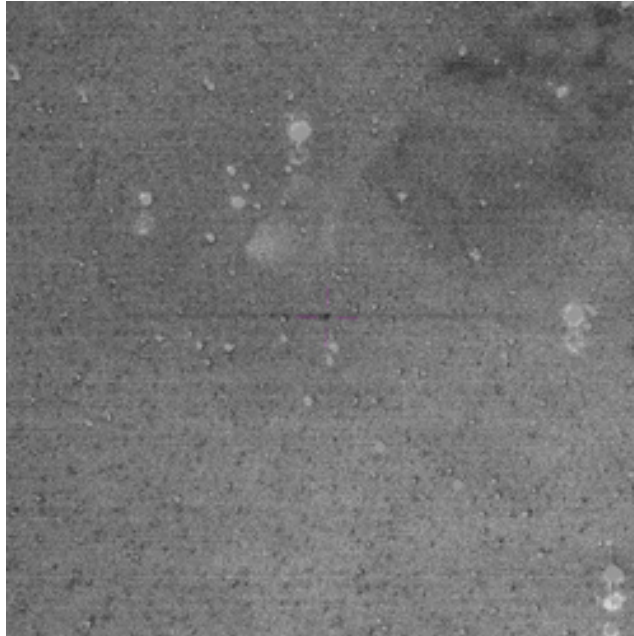
Exposure on object	6 x 1200 s
Master Dark	Corrected
Master Flat	Corrected
Master Offset	Corrected
Neon-Argon calibration	Corrected

Reference star calib.	HD159217_A0V
Exposure on ref star	24 x 5 s
Ref star Sp. date	2.357/03/2025

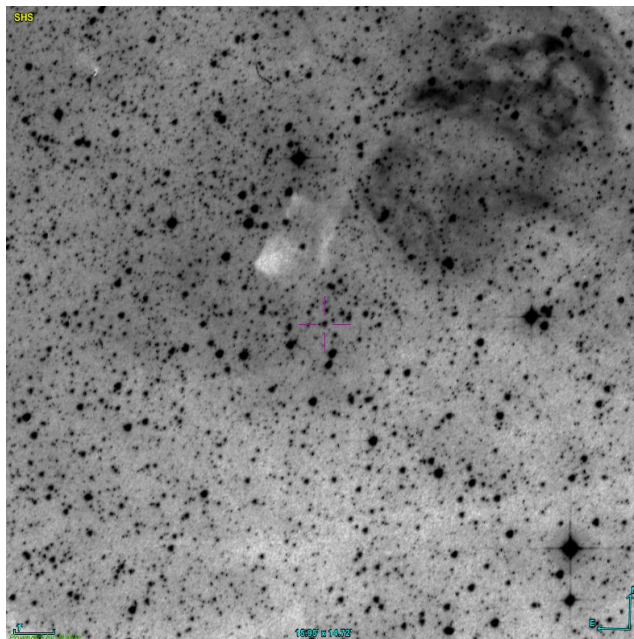


Slit position and images

Slit position



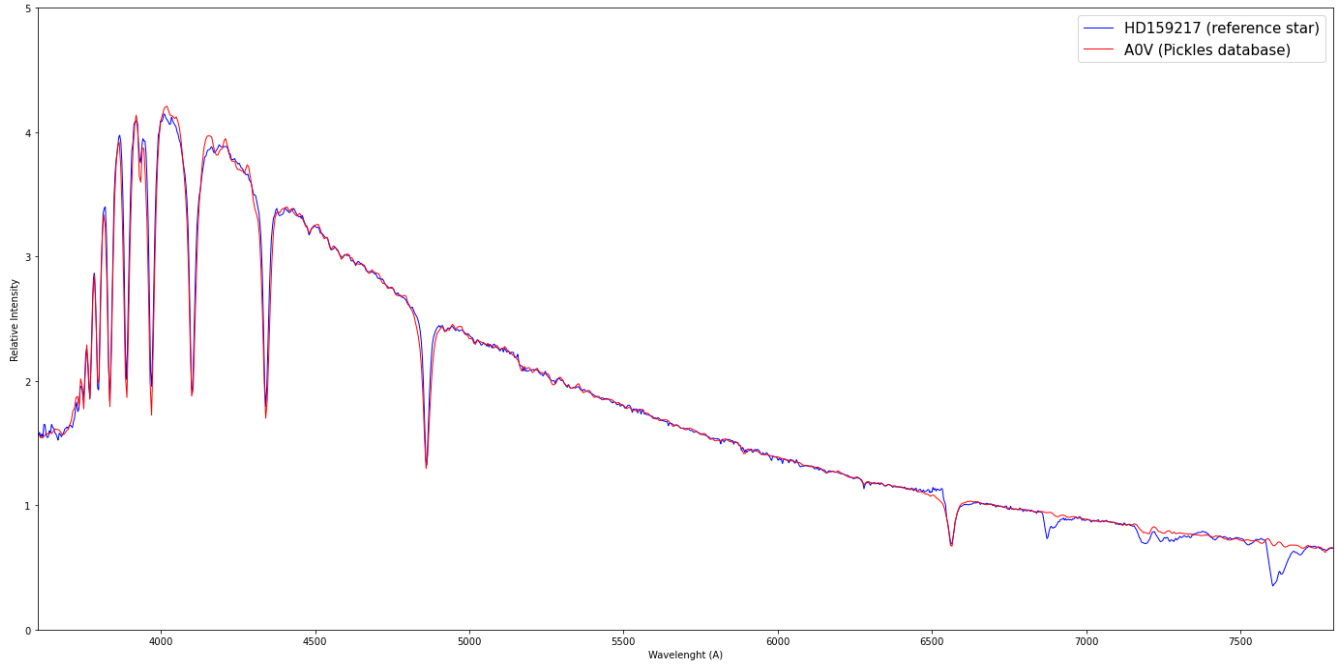
Object picture(s)



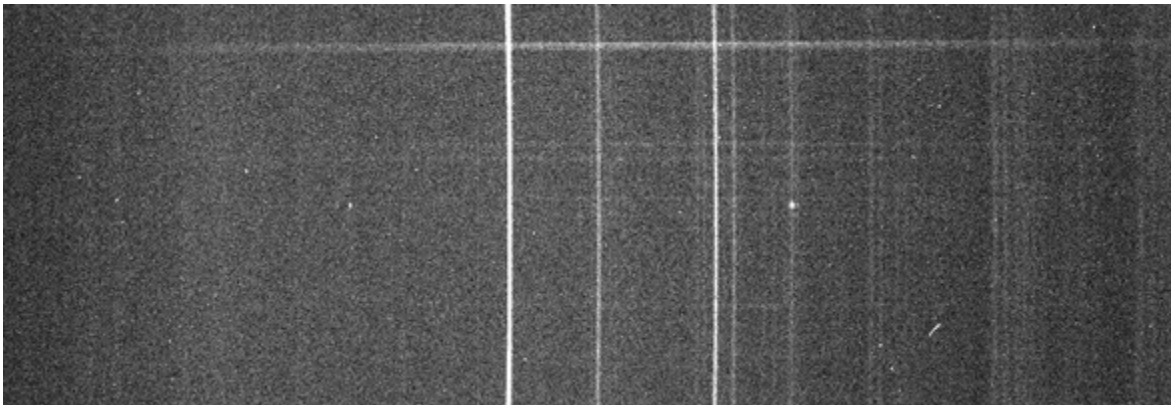


Instrumental Response and 2D Spectra

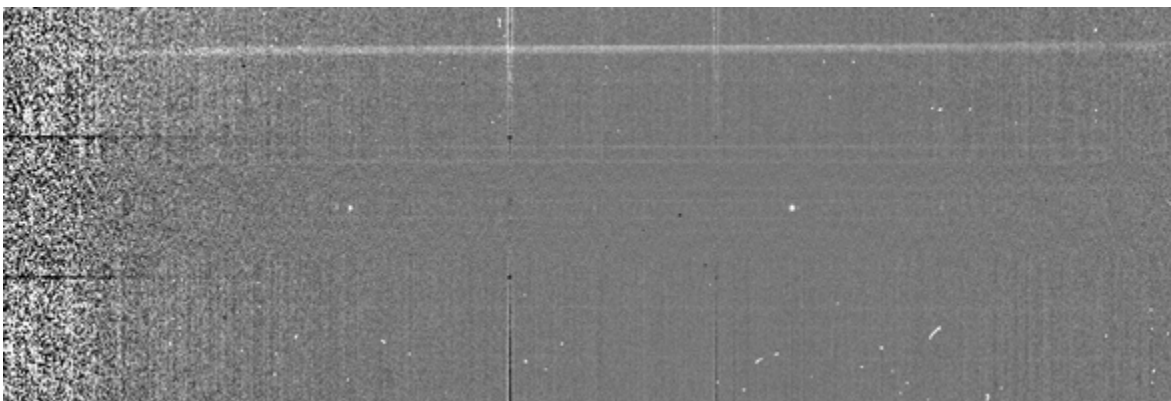
Instrumental response (red = theoretical ref star spectrum ; blue = acquired ref star spectrum with instrumental response correction applied)

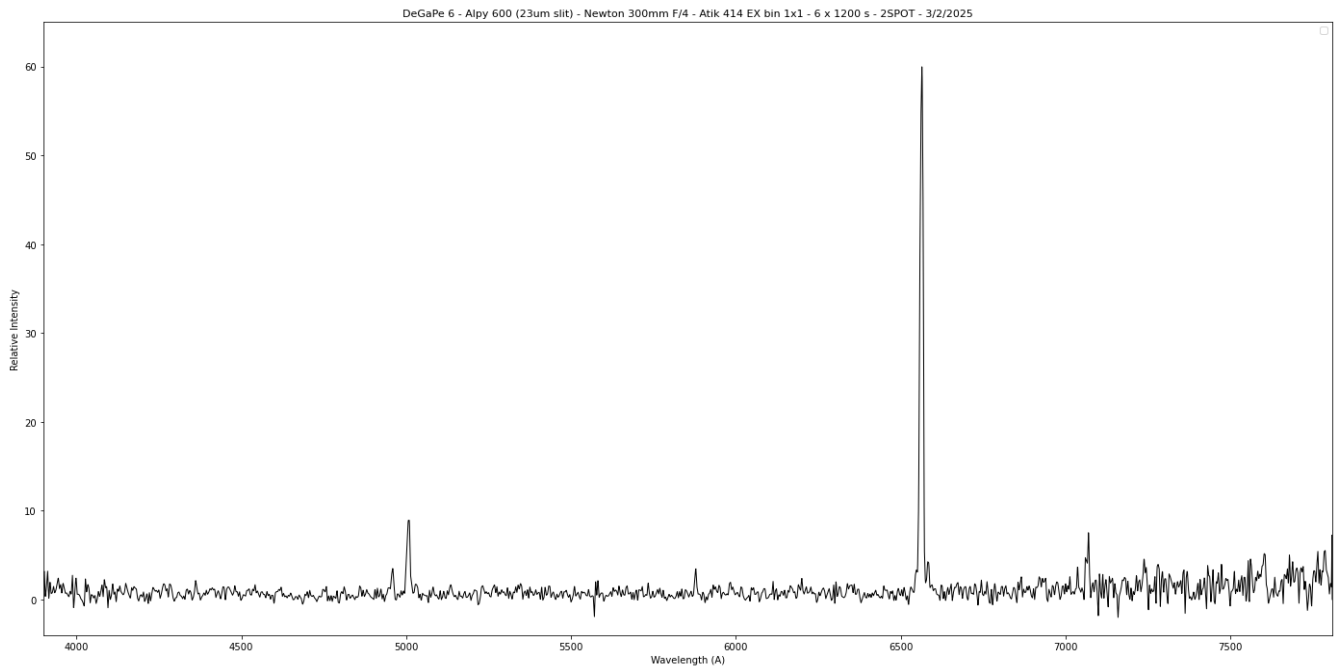


2D Raw spectrum



2D Processed spectrum





Comments

DeGaPe 6 shows following emission lines:

[OIII](4959-5007), [NII](6548-6583), H α and maybe HeI(7065) + HeI(5876)

It also shows intense blue/cyan color on SHO picture:

https://planetarynebulae.net/FR/page_np.php?id=13

DeGaPe 6 might be a True PN.