



Spectroscopic Record Sheet



Details on acquisitions

Object	DeGaPe 68
Coordinates (J2000)	17:21:11.80 -35:00:43.50
Type	New candidate

Observation date	8.050/10/2023
Weather conditions	9°C / 45% hum
Observer	2SPOT
Location	Deep Sky Chile (CL)

Mount	10 Micron GM3000 HPS
Telescope	Newton 200mm F/5
Spectroscope	Alpy 600 (23um slit)
Resolution (bin 1x1)	~1nm at 656 nm
Principal camera	Atik 414 EX
Dispersion (bin 1x1)	~0,3 nm/pixel at 656 nm
Cam temperature	-10°C
Binning	2x2
Guiding camera	Atik 314L+
Data acquisition Soft	Prism v11.2.3.21
Data processing soft	ISIS V6.1.1

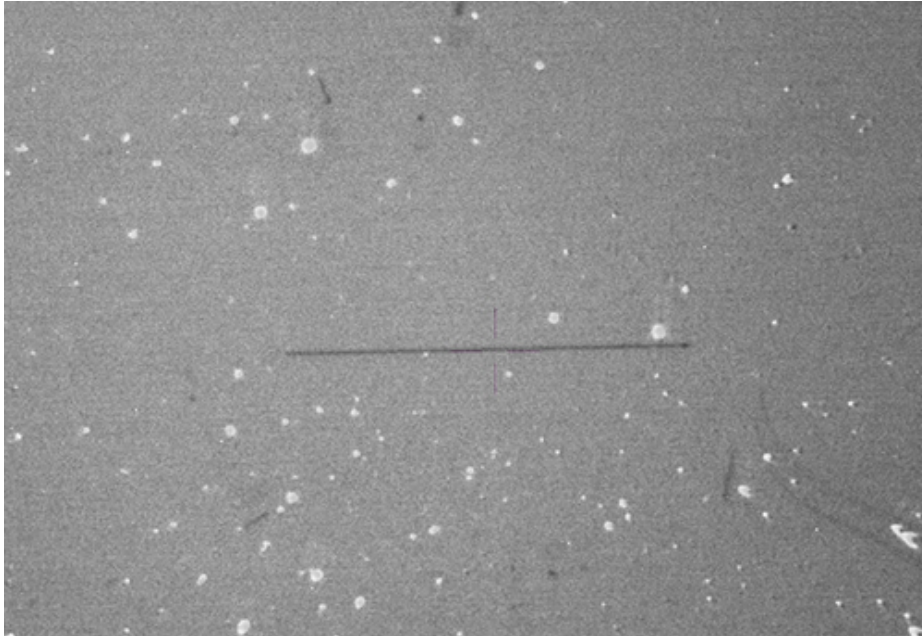
Exposure on object	6 x 1200 s
Master Dark	Corrected
Master Flat	Corrected
Master Offset	Corrected
Neon-Argon calibration	Corrected

Reference star calib.	/_/_
Exposure on ref star	/
Ref star Sp. date	/

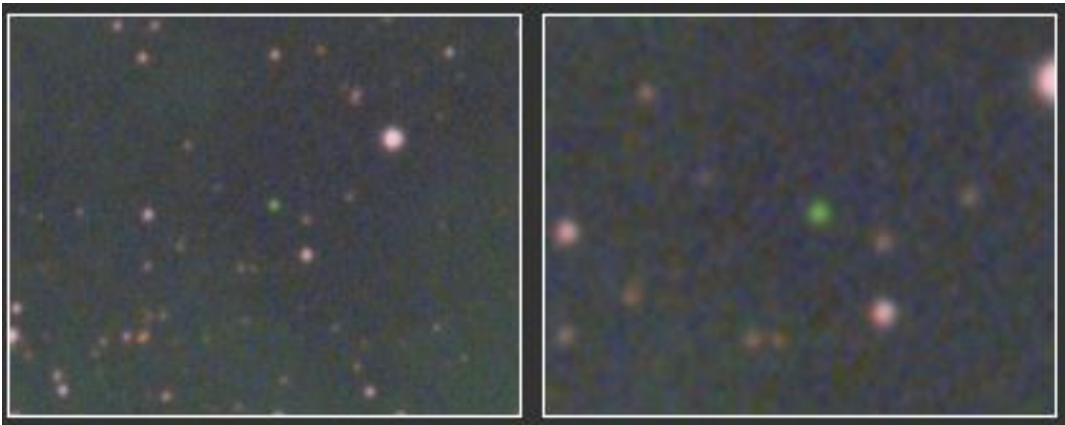


Slit position and images

Slit position



Object picture(s)



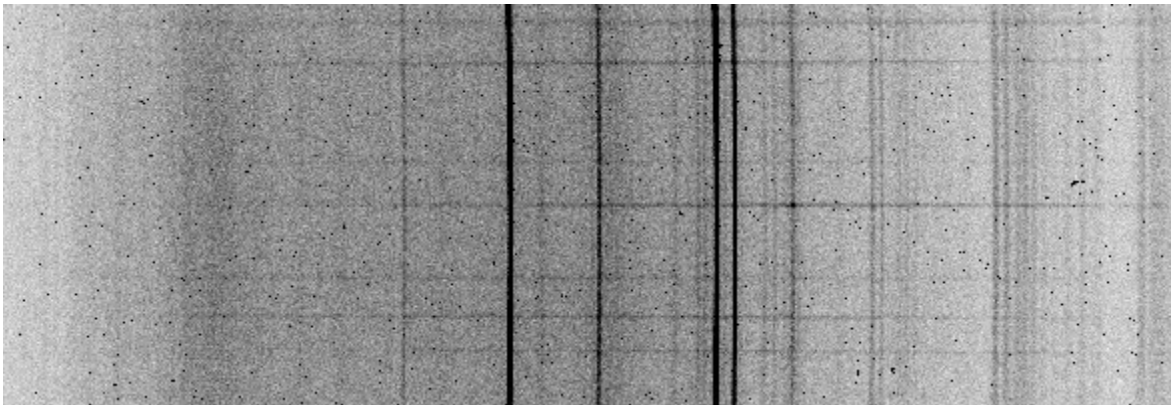


Instrumental Response and 2D Spectra

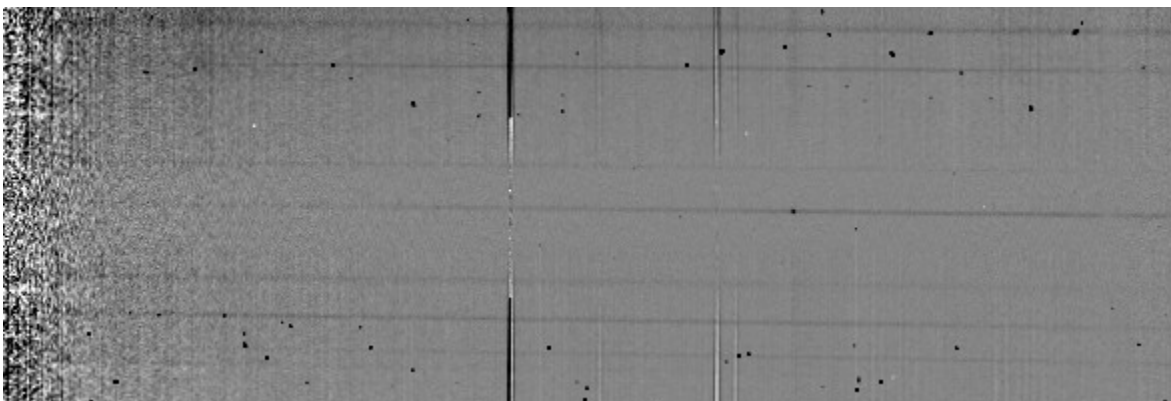
Instrumental response (red = theoretical ref star spectrum ; blue = acquired ref star spectrum with instrumental response correction applied)

No reference star was used here
but a standard instrumental response
taken at the same height as the target.

2D Raw spectrum

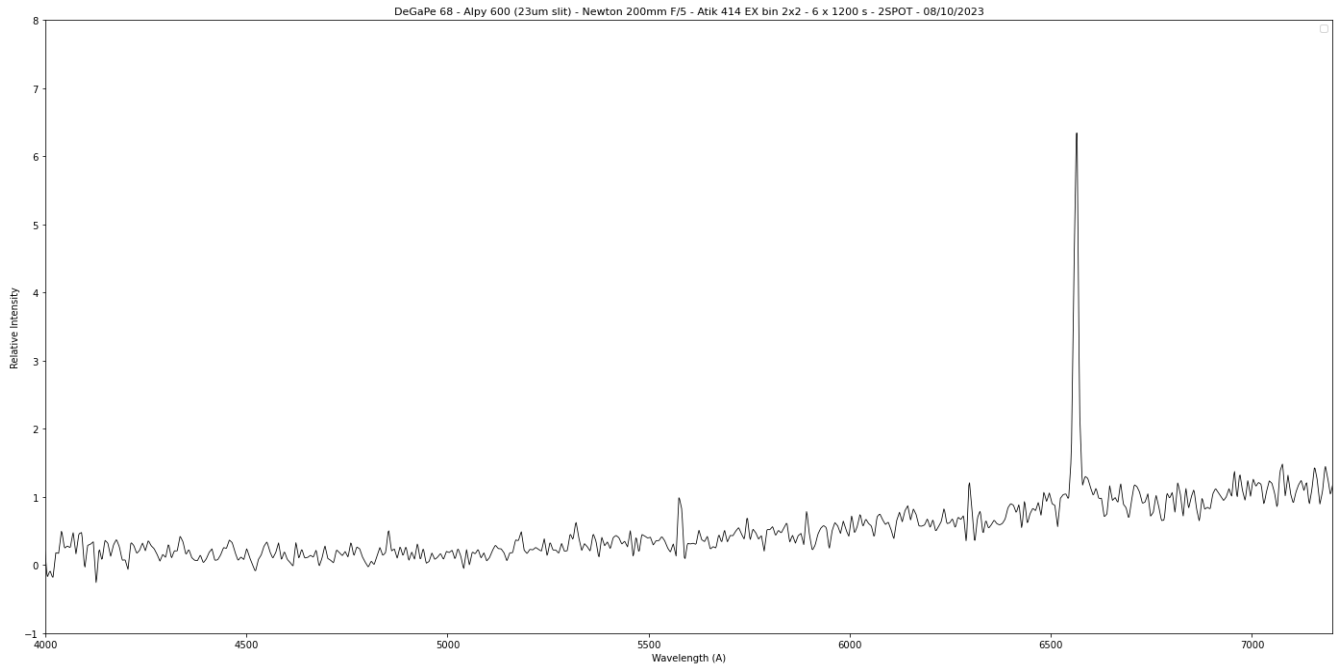


2D Processed spectrum





Results



Comments

Nothing else than Halpha line visible on both 1d and 2d spectra.