



Spectroscopic Record Sheet



Details on acquisitions

| | |
|---------------------|--------------------------|
| Object | DeGaPe 67 |
| Coordinates (J2000) | 17:13:36.40 -33:47:49.50 |
| Type | New candidate |

| | |
|--------------------|---------------------|
| Observation date | 5.055/10/2023 |
| Weather conditions | 9°C / 46% hum |
| Observer | 2SPOT |
| Location | Deep Sky Chile (CL) |

| | |
|-----------------------|-------------------------|
| Mount | 10 Micron GM3000 HPS |
| Telescope | Newton 300mm F/4 |
| Spectroscope | Alpy 600 (23um slit) |
| Resolution (bin 1x1) | ~1nm at 656 nm |
| Principal camera | Atik 414 EX |
| Dispersion (bin 1x1) | ~0,3 nm/pixel at 656 nm |
| Cam temperature | -10°C |
| Binning | 2x2 |
| Guiding camera | Atik 314L+ |
| Data acquisition Soft | Prism v11.2.3.21 |
| Data processing soft | ISIS V6.1.1 |

| | |
|------------------------|------------|
| Exposure on object | 6 x 1200 s |
| Master Dark | Corrected |
| Master Flat | Corrected |
| Master Offset | Corrected |
| Neon-Argon calibration | Corrected |

| | |
|-----------------------|------|
| Reference star calib. | /_/_ |
| Exposure on ref star | / |
| Ref star Sp. date | / |

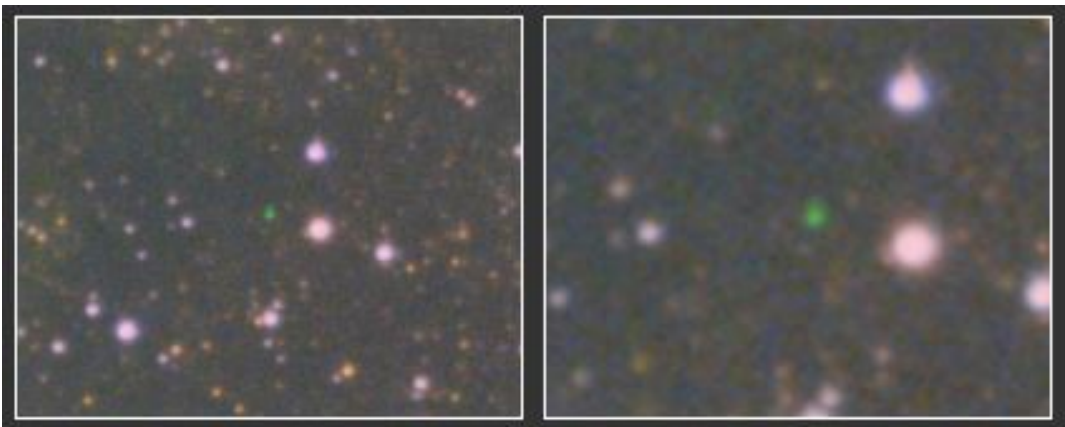


Slit position and images

Slit position



Object picture(s)



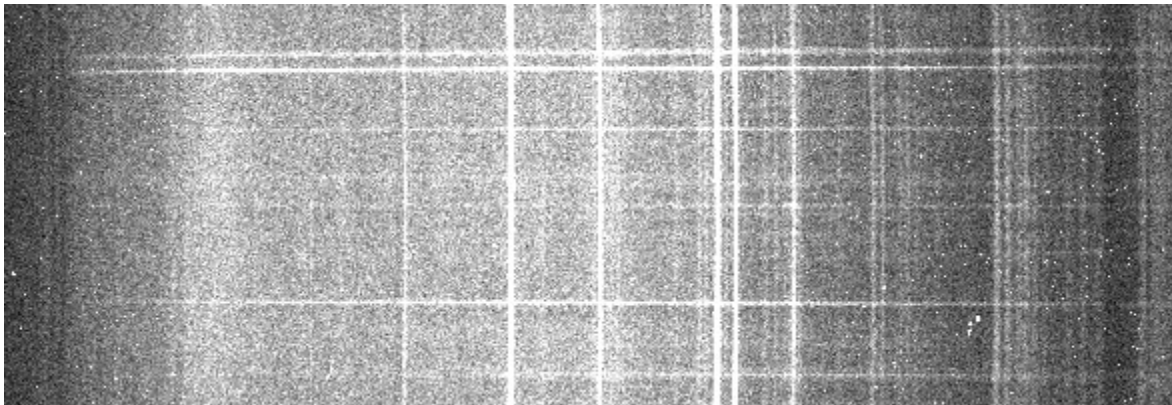


Instrumental Response and 2D Spectra

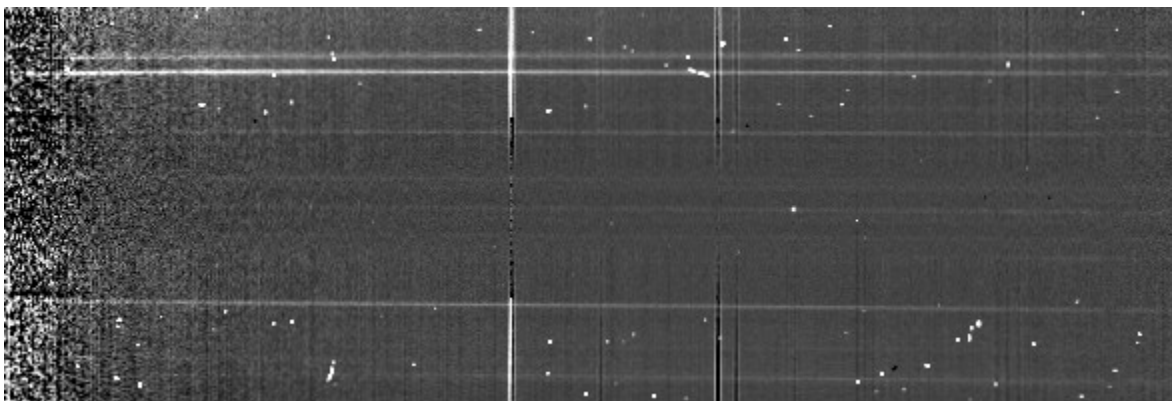
Instrumental response (red = theoretical ref star spectrum ; blue = acquired ref star spectrum with instrumental response correction applied)

No reference star was used here
but a standard instrumental response
taken at the same height as the target.

2D Raw spectrum

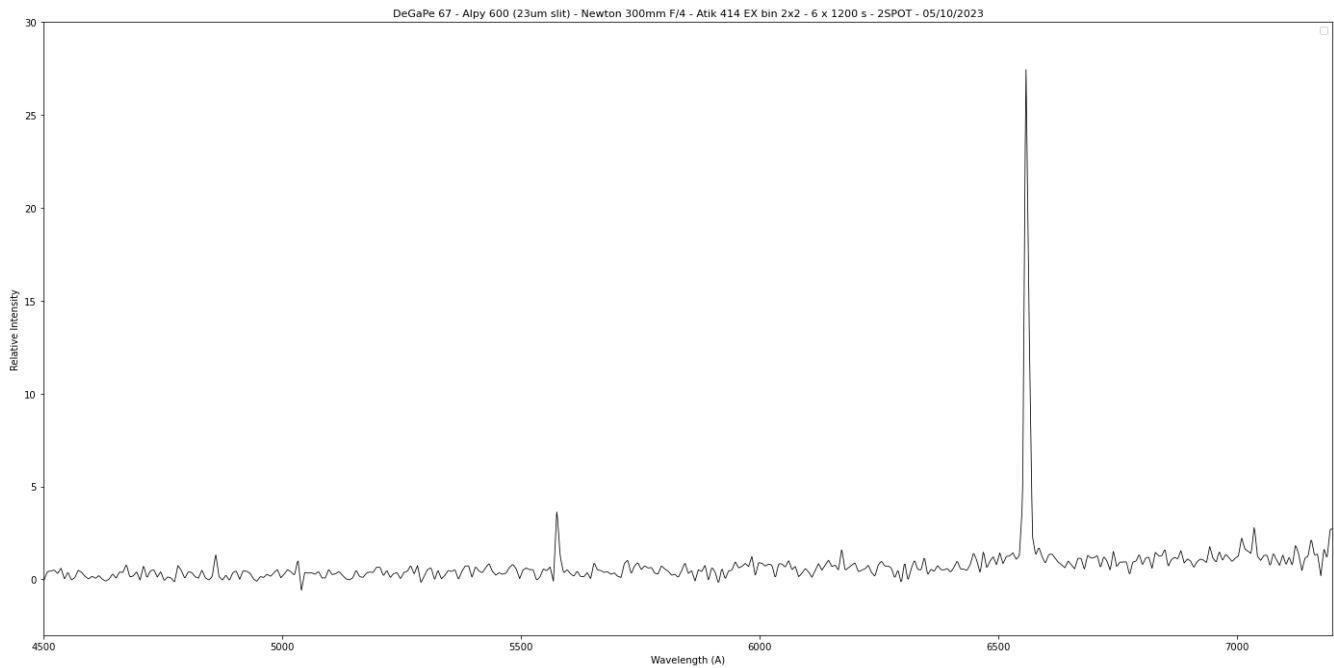


2D Processed spectrum





Results



Comments

Strong H α line visible.

Faint H β (4861Å) visible on both 2d and 1d spectra.

Line at 5577Å is not to be considered...