



Spectroscopic Record Sheet



Details on acquisitions

Object	DeGaPe 42
Coordinates (J2000)	15:13:35.20 -59:53:12.60
Type	New candidate

Observation date	1.356/04/2025
Weather conditions	/
Observer	2SPOT
Location	Deep Sky Chile (CL)

Mount	10 Micron GM3000 HPS
Telescope	Newton 300mm F/4
Spectroscope	Alpy 600 (23um slit)
Resolution (bin 1x1)	~1nm at 656 nm
Principal camera	Atik 414 EX
Dispersion (bin 1x1)	~0,3 nm/pixel at 656 nm
Cam temperature	-10°C
Binning	1x1
Guiding camera	ASI 178MM
Data acquisition Soft	Prism v11.2.3.21
Data processing soft	ISIS V6.1.1

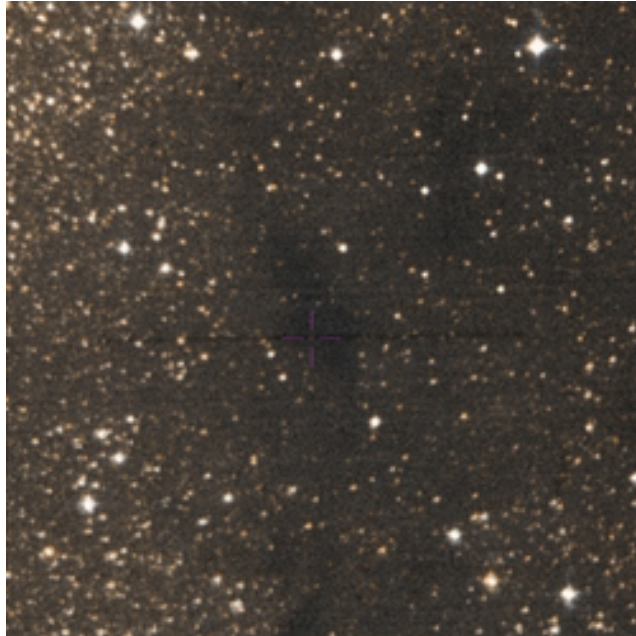
Exposure on object	7 x 1200 s
Master Dark	Corrected
Master Flat	Corrected
Master Offset	Corrected
Neon-Argon calibration	Corrected

Reference star calib.	HD142139_A0V
Exposure on ref star	12 x 20 s
Ref star Sp. date	1.411/04/2025



Slit position and images

Slit position



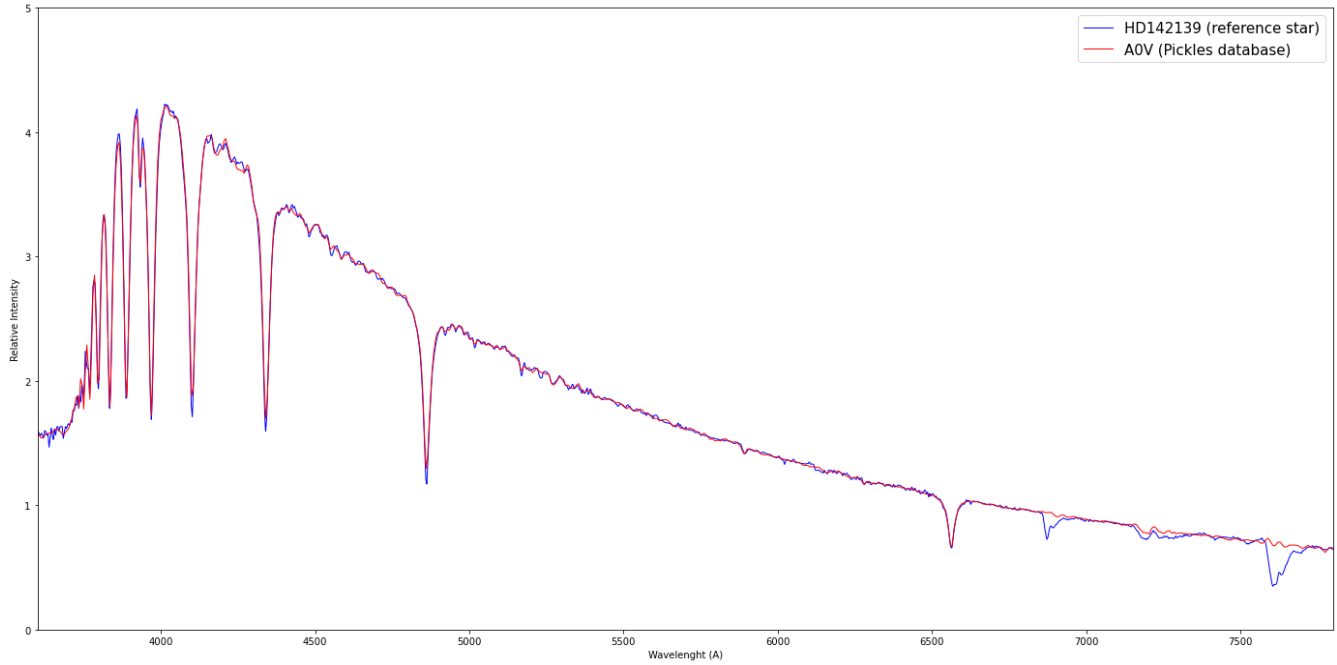
Object picture(s)



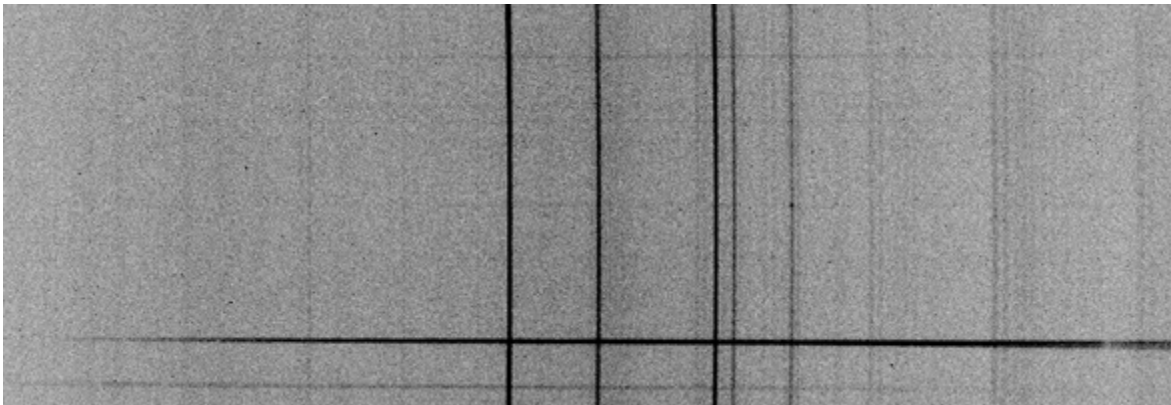


Instrumental Response and 2D Spectra

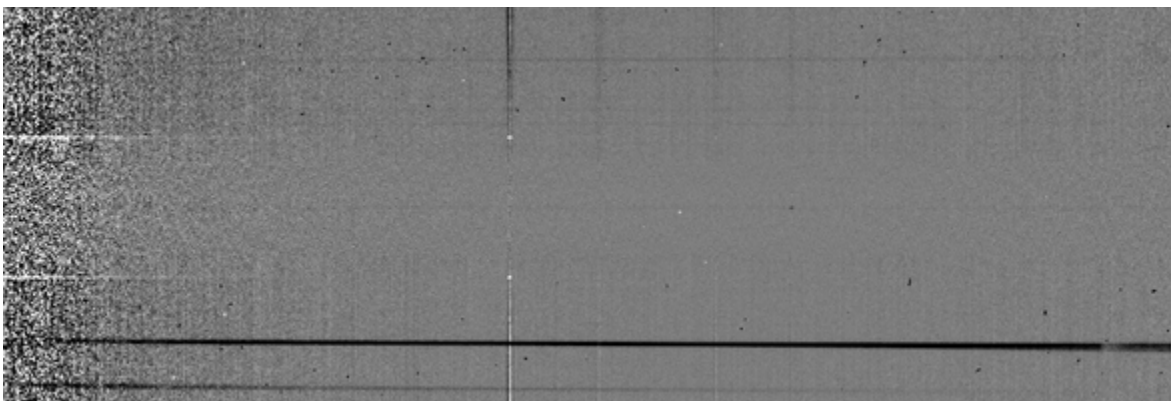
Instrumental response (red = theoretical ref star spectrum ; blue = acquired ref star spectrum with instrumental response correction applied)



2D Raw spectrum

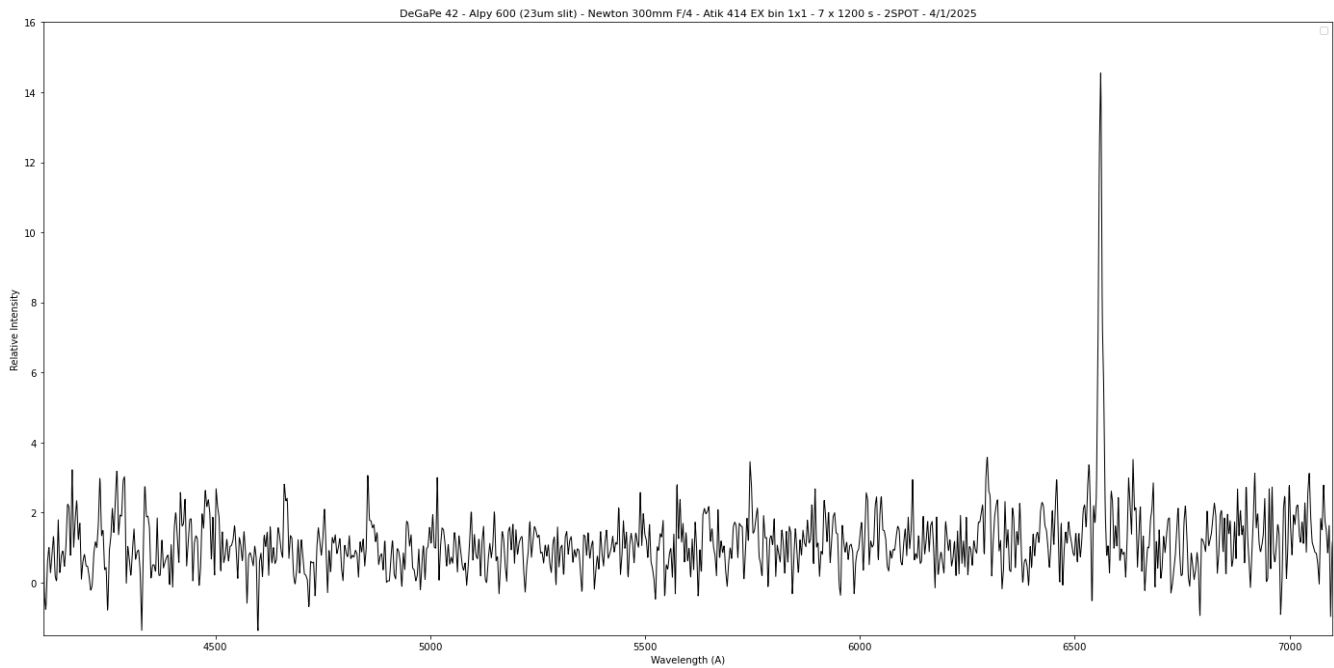


2D Processed spectrum





Results



Comments

DeGaPe 42 only shows H α in emission.
It might be an emission line star.