



Spectroscopic Record Sheet



Details on acquisitions

Object	DeGaPe 35
Coordinates (J2000)	15:21:18.10 -59:00:34.20
Type	New candidate

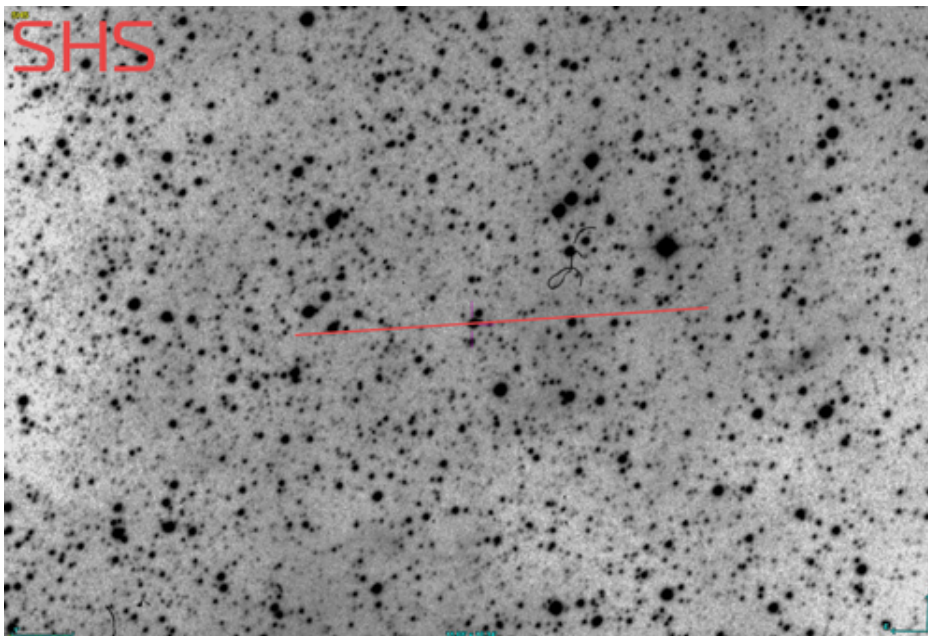
Observation date	11.084/06/2021
Weather conditions	12°C / 17% hum
Observer	2SPOT
Location	Deep Sky Chile (CL)

Mount	10 Micron GM3000 HPS
Telescope	Ritchey-Chrétien RC12
Spectroscope	Alpy 600 (23um slit)
Resolution (bin 1x1)	~1 Å at I656 nm
Principal camera	Atik 414 EX
Dispersion (bin 1x1)	~0,3 nm/pixel at I656 nm
Cam temperature	-10°C
Binning	1x1
Guiding camera	Atik 314L+
Data acquisition Soft	Prism v10.4.12.911
Data processing soft	ISIS V6.1.1

Exposure on object	6 x 1200 s
Master Dark	Corrected
Master Flat	Corrected
Master Offset	Corrected
Neon-Argon calibration	Corrected
Reference star calib.	HD142139_A3V
Exposure on ref star	18 x 10 s
Ref star Sp. date	11.136/06/2021

Images and slit position

Slit position
Colored line = slit position



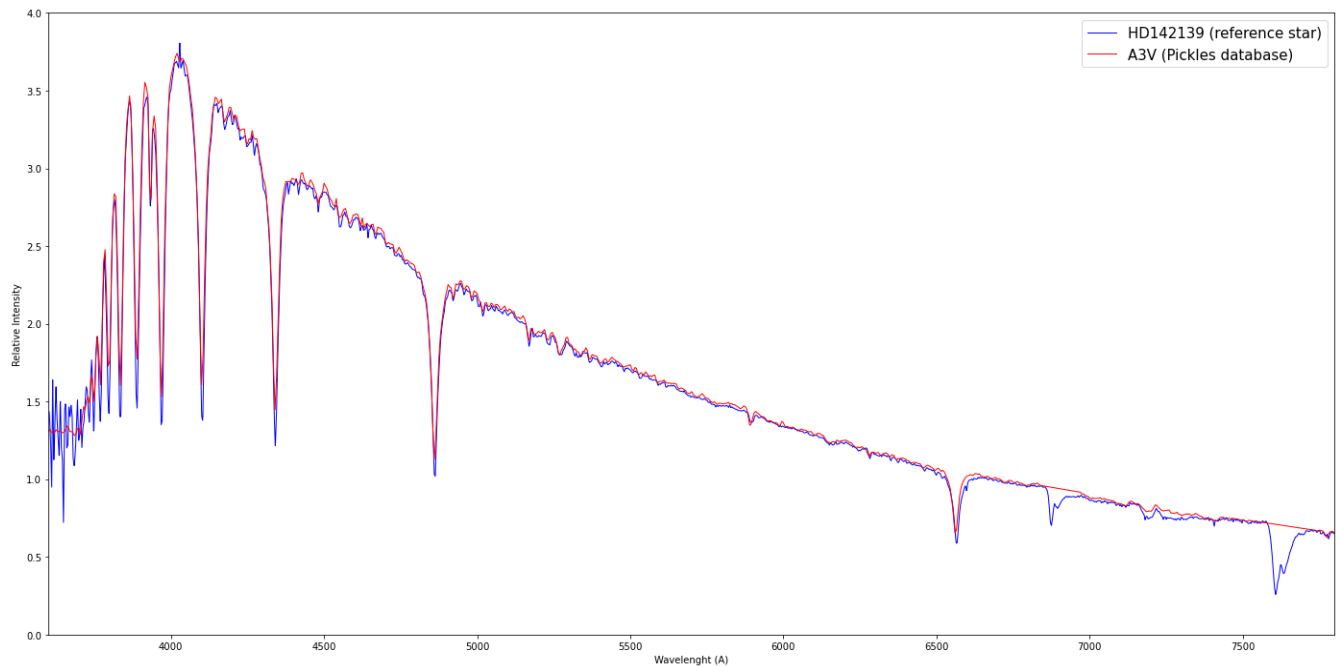
Slit Position, Autoguider image





Instrumental Response and 2D Spectrum

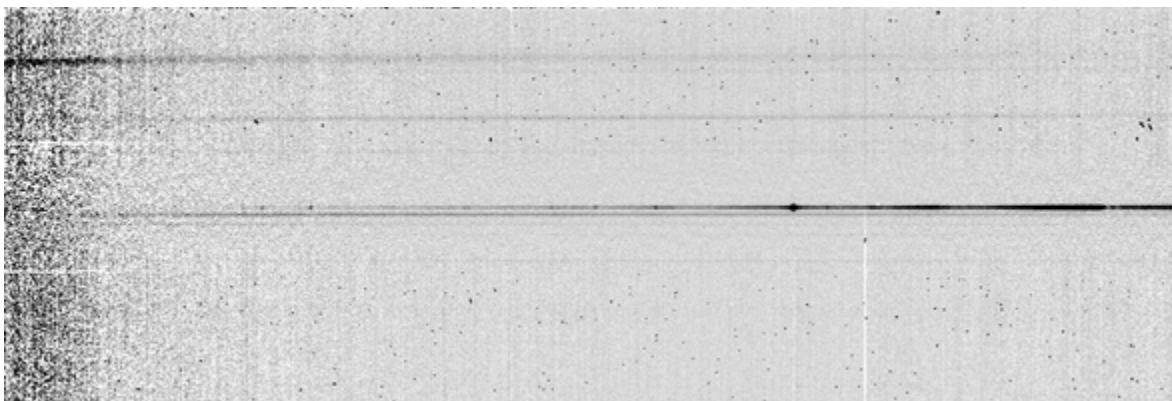
Instrumental response (red = theoretical ref star spectrum ; blue = acquired ref star spectrum with instrumental response correction applied)

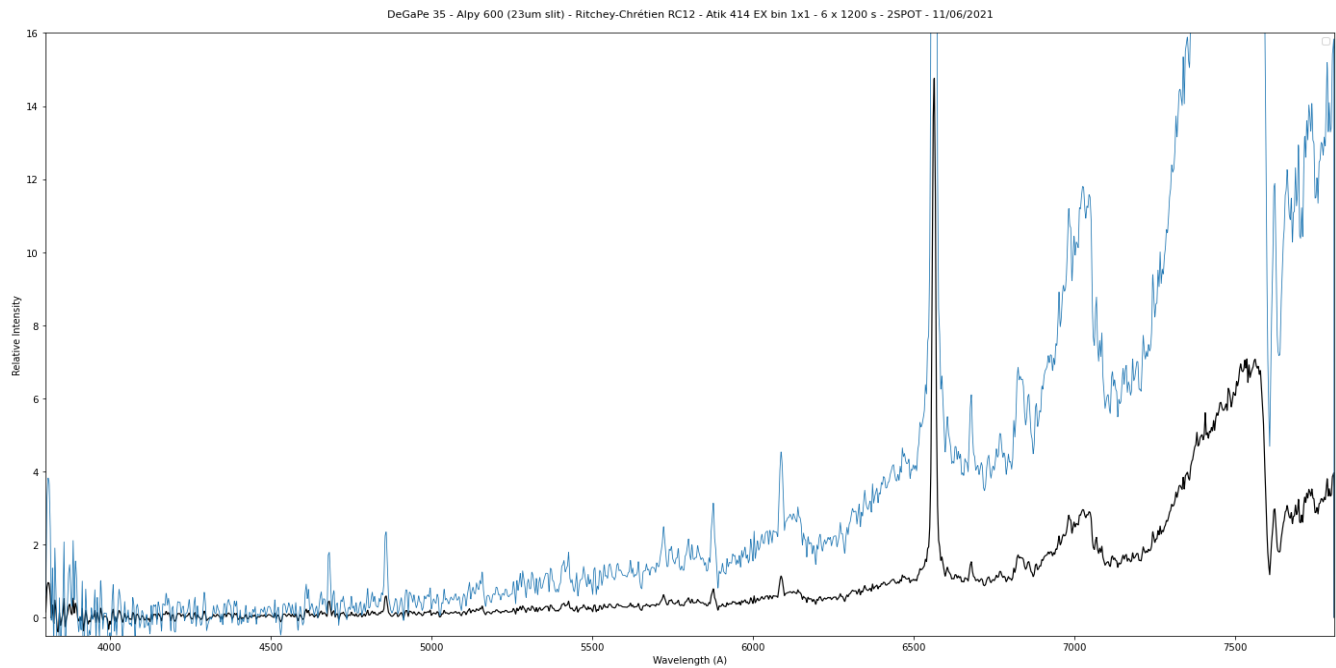


2D Raw spectrum



2D Processed spectrum





Comments

DeGaPe 35 doesn't show any PN characteristic.

It has a red star profil with emission lines.

Identified lines:

4685A -> He II

4861A -> Hbeta

5411A -> He II

5721A -> [Fe VII]

5875A -> He I

6087A -> [Fe VII]

6563A -> Halpha

6678A -> He I

6826A -> Raman OIV ???