



Spectroscopic Record Sheet



Details on acquisitions

Object	DeGaPe 17
Coordinates (J2000)	16:30:21.00 -49:41:11.10
Type	New candidate

Observation date	10.993/06/2021
Weather conditions	12°C / 17% hum
Observer	2SPOT
Location	Deep Sky Chile (CL)

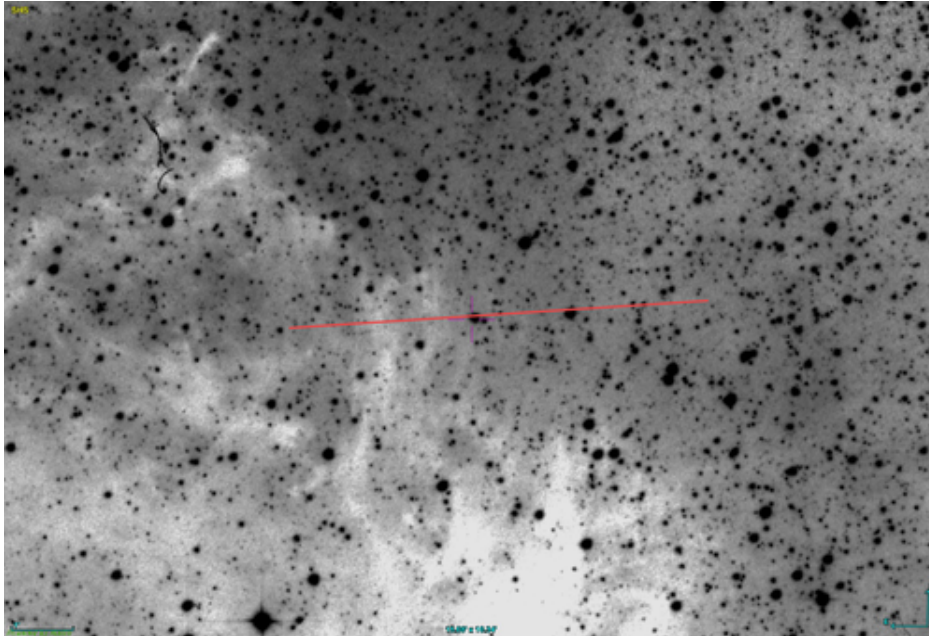
Mount	10 Micron GM3000 HPS
Telescope	Ritchey-Chrétien RC12
Spectroscope	Alpy 600 (23um slit)
Resolution (bin 1x1)	~1 Å at I656 nm
Principal camera	Atik 414 EX
Dispersion (bin 1x1)	~0,3 nm/pixel at I656 nm
Cam temperature	-10°C
Binning	1x1
Guiding camera	Atik 314L+
Data acquisition Soft	Prism v10.4.12.911
Data processing soft	ISIS V6.1.1

Exposure on object	3 x 1200 s
Master Dark	Corrected
Master Flat	Corrected
Master Offset	Corrected
Neon-Argon calibration	Corrected

Reference star calib.	HD145842_B8V
Exposure on ref star	16 x 10 s
Ref star Sp. date	11.024/06/2021

Images and slit position

Slit position
Colored line = slit position



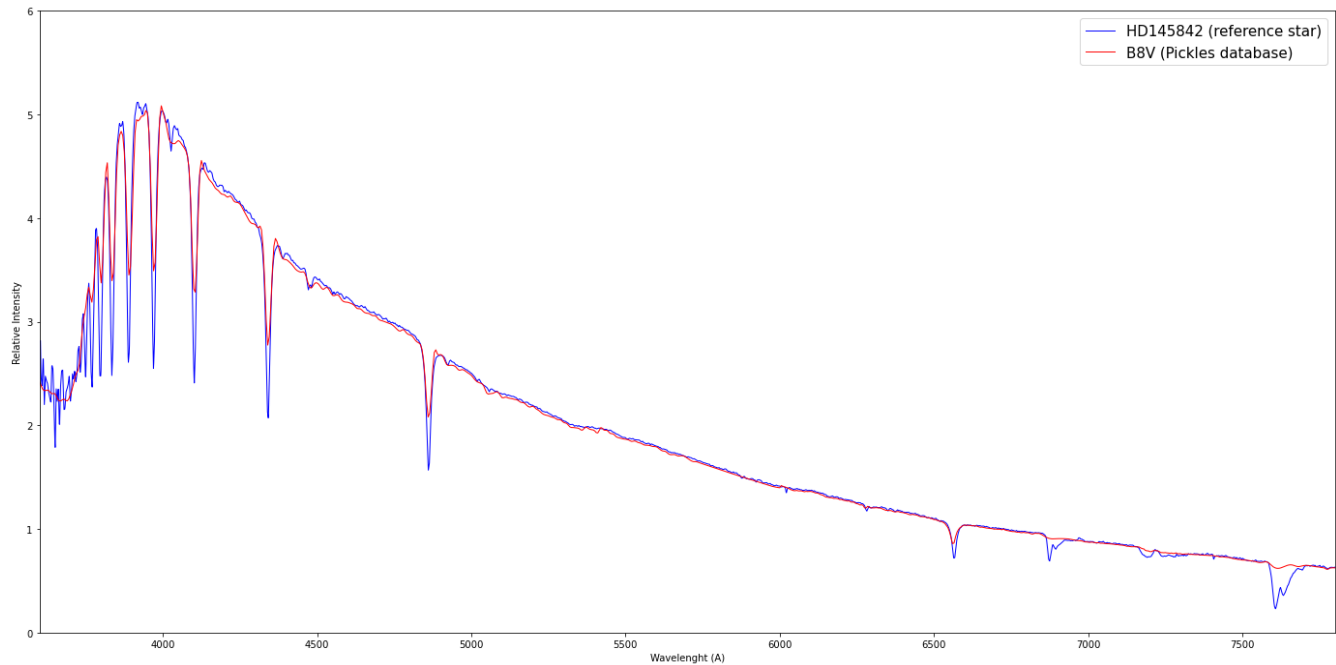
Slit Position, Autoguider image



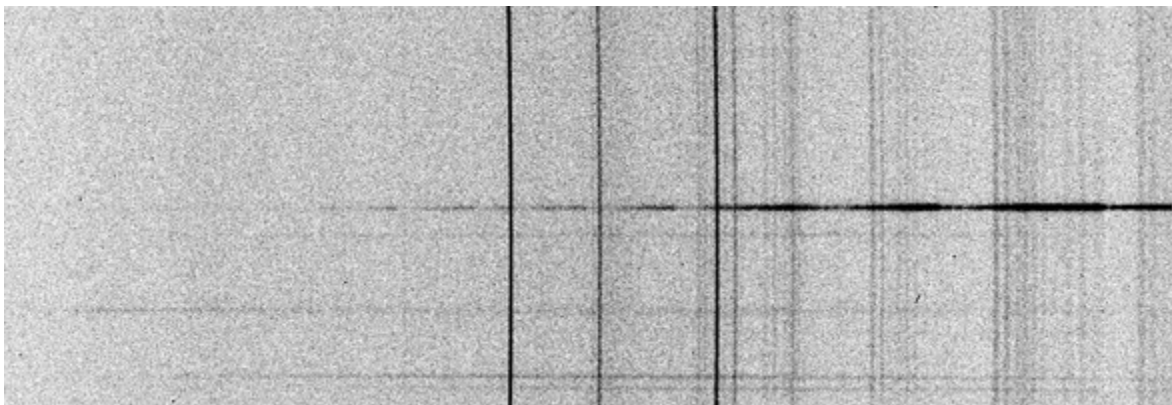


Instrumental Response and 2D Spectrum

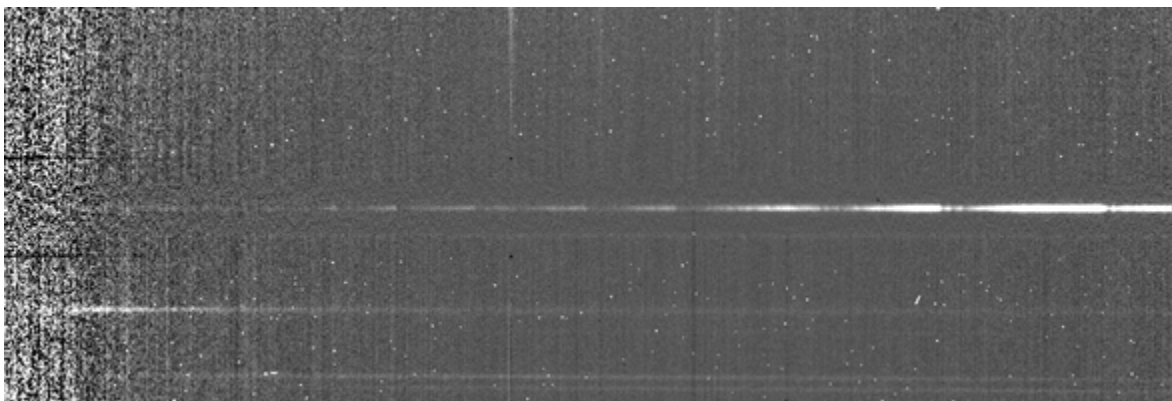
Instrumental response (red = theoretical ref star spectrum ; blue = acquired ref star spectrum with instrumental response correction applied)

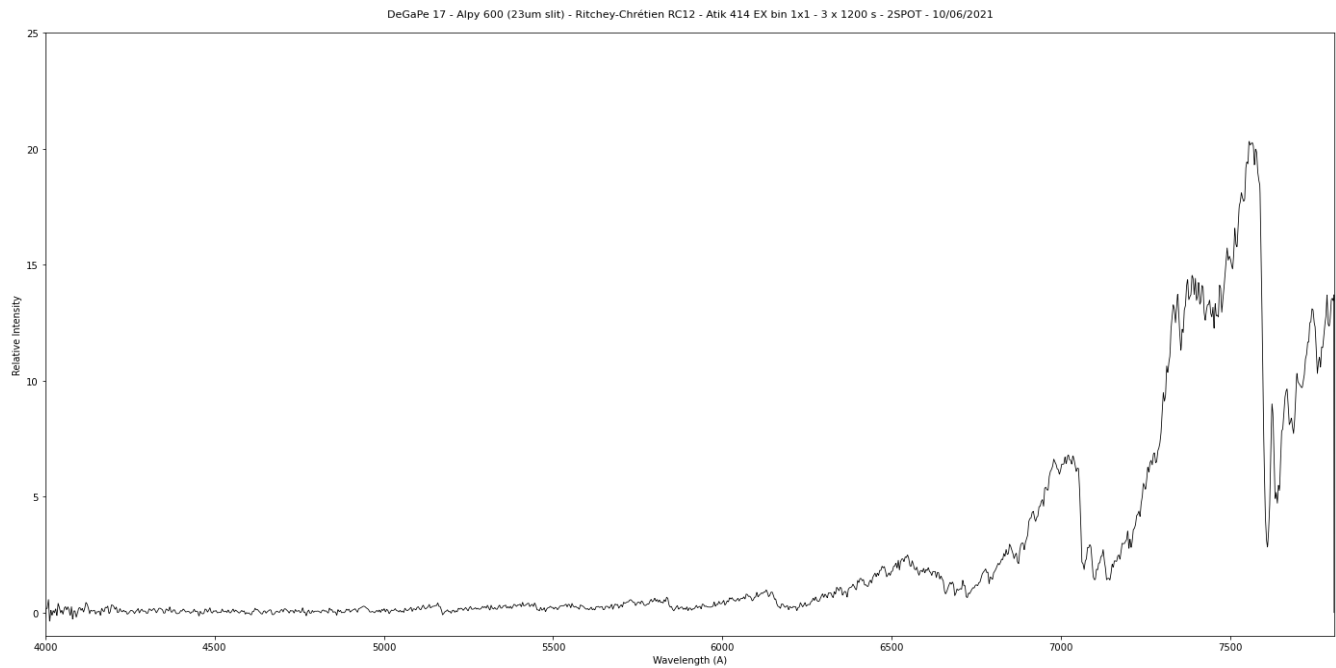


2D Raw spectrum



2D Processed spectrum





Comments

DeGaPe 17 doesn't show any PN characteristic.
Its continuum looks like a typical red star.