



# Spectroscopic Record Sheet



## Details on acquisitions

|                     |                          |
|---------------------|--------------------------|
| Object              | DeGaPe 16                |
| Coordinates (J2000) | 16:34:08.40 -49:16:26.00 |
| Type                | New candidate            |

|                    |                     |
|--------------------|---------------------|
| Observation date   | 3.264/04/2022       |
| Weather conditions | /                   |
| Observer           | 2SPOT               |
| Location           | Deep Sky Chile (CL) |

|                       |                         |
|-----------------------|-------------------------|
| Mount                 | 10 Micron GM3000 HPS    |
| Telescope             | Ritchey-Chrétien RC12   |
| Spectroscope          | Alpy 600 (23um slit)    |
| Resolution (bin 1x1)  | ~1nm at 656 nm          |
| Principal camera      | Atik 414 EX             |
| Dispersion (bin 1x1)  | ~0,3 nm/pixel at 656 nm |
| Cam temperature       | -10°C                   |
| Binning               | 2x2                     |
| Guiding camera        | Atik 314L+              |
| Data acquisition Soft | Prism v10.4.12.911      |
| Data processing soft  | ISIS V6.1.1             |

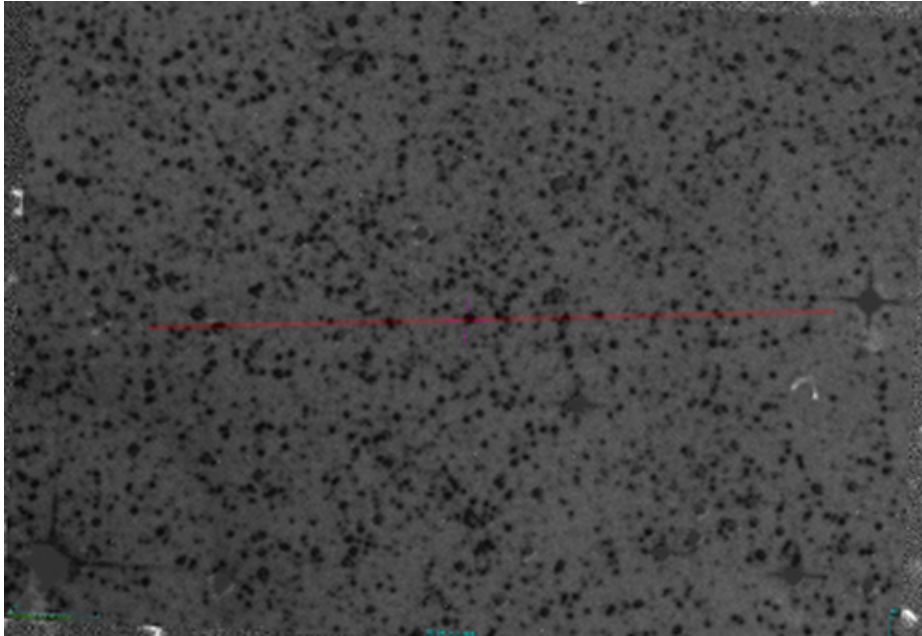
|                        |            |
|------------------------|------------|
| Exposure on object     | 3 x 1200 s |
| Master Dark            | Corrected  |
| Master Flat            | Corrected  |
| Master Offset          | Corrected  |
| Neon-Argon calibration | Corrected  |

|                       |               |
|-----------------------|---------------|
| Reference star calib. | HD145842_B8V  |
| Exposure on ref star  | 15 x 8 s      |
| Ref star Sp. date     | 3.293/04/2022 |

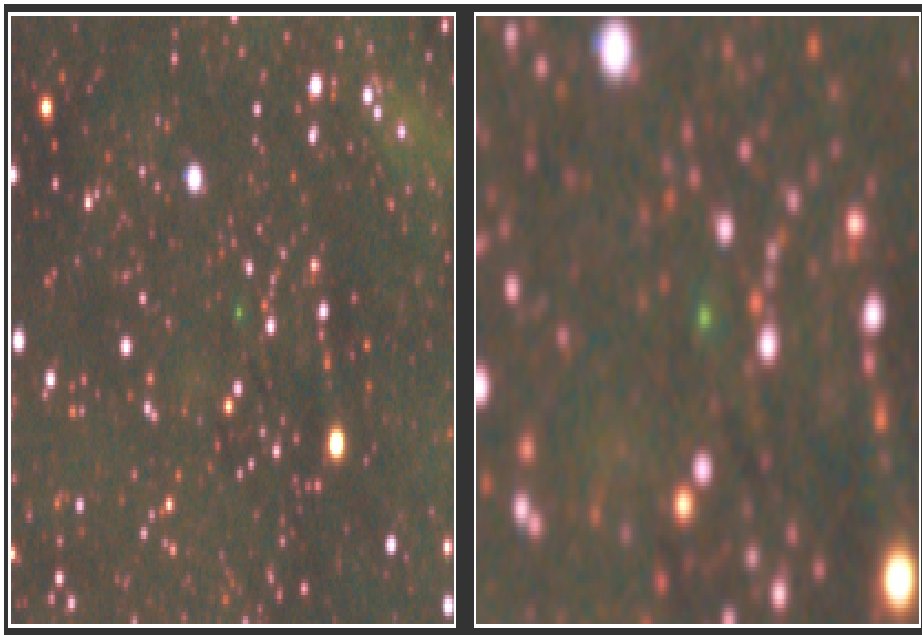


## Slit position and images

Slit position



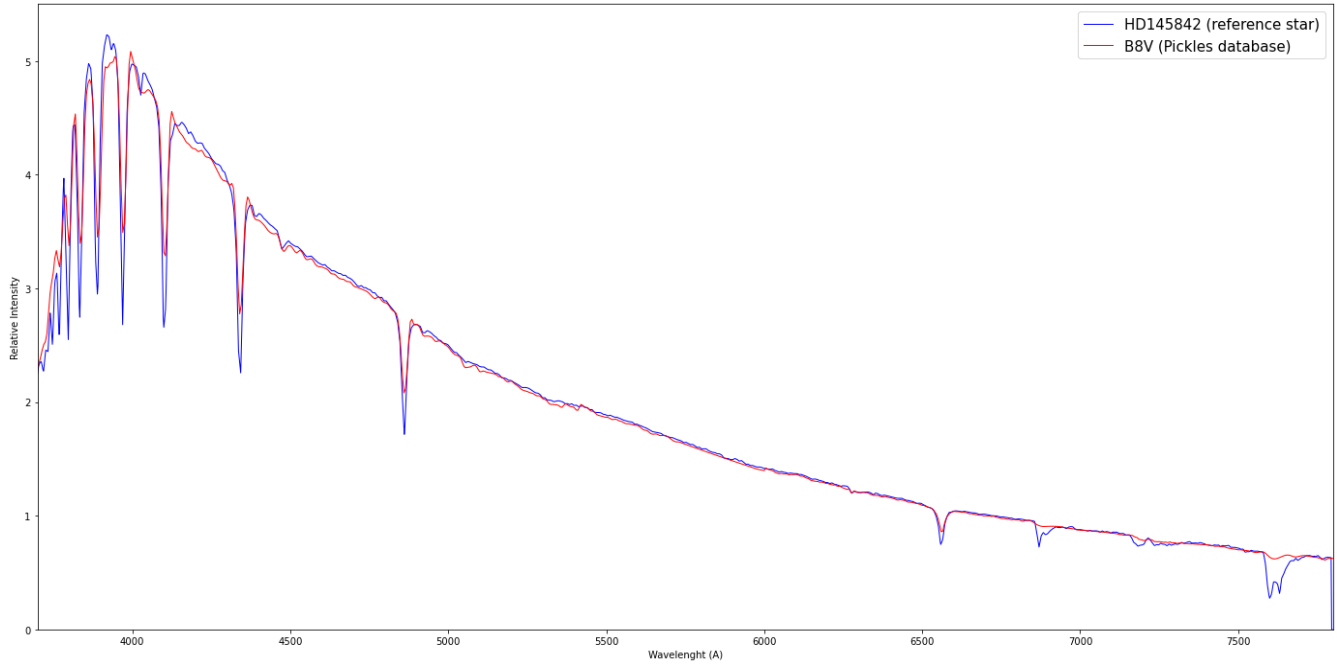
Object picture(s)



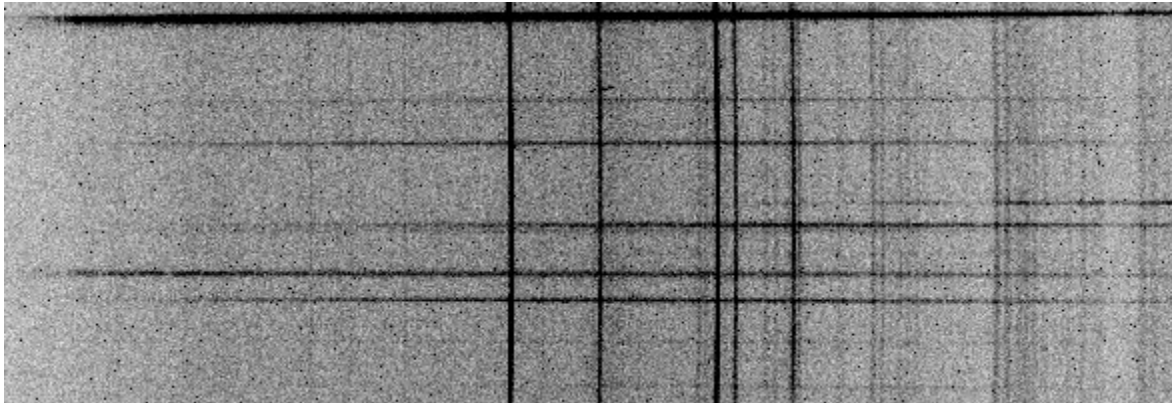


# Instrumental Response and 2D Spectrum

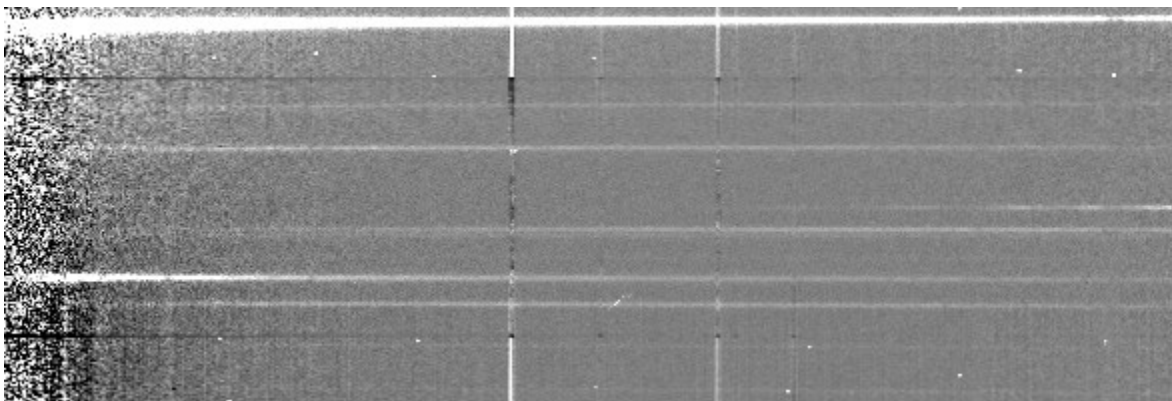
Instrumental response (red = theoretical ref star spectrum ; blue = acquired ref star spectrum with instrumental response correction applied)



## 2D Raw spectrum

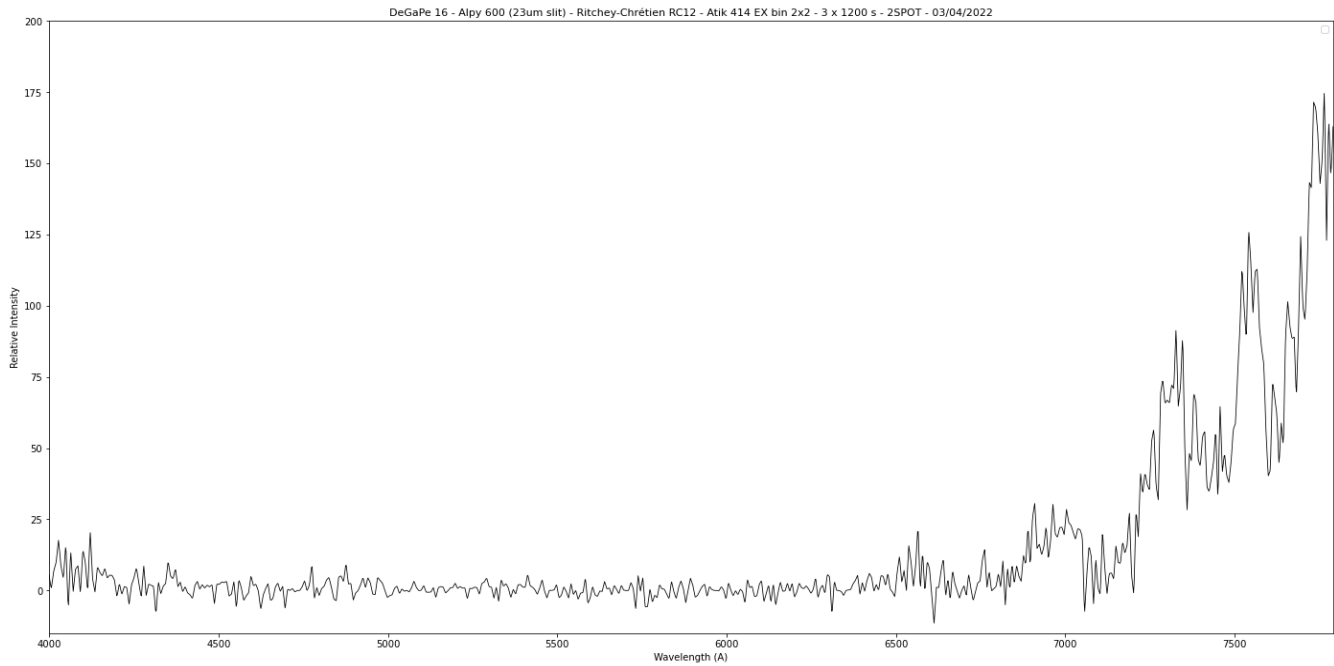


## 2D Processed spectrum





# Results



## Comments

DeGaPe 16 shows a red star profil like DeGaPe 9, 13, 17, etc...  
Its spectrum shows a tiny H $\alpha$  emission line.