



Spectroscopic Record Sheet



Details on acquisitions

Object	DeGaPe 15
Coordinates (J2000)	16:50:46.00 -49:58:22.50
Type	New candidate

Observation date	3.325/04/2022
Weather conditions	/
Observer	2SPOT
Location	Deep Sky Chile (CL)

Mount	10 Micron GM3000 HPS
Telescope	Ritchey-Chrétien RC12
Spectroscope	Alpy 600 (23um slit)
Resolution (bin 1x1)	~1nm at 656 nm
Principal camera	Atik 414 EX
Dispersion (bin 1x1)	~0,3 nm/pixel at 656 nm
Cam temperature	-10°C
Binning	2x2
Guiding camera	Atik 314L+
Data acquisition Soft	Prism v10.4.12.911
Data processing soft	ISIS V6.1.1

Exposure on object	3 x 1200 s
Master Dark	Corrected
Master Flat	Corrected
Master Offset	Corrected
Neon-Argon calibration	Corrected
Reference star calib.	HD145842_B8V
Exposure on ref star	15 x 8 s
Ref star Sp. date	3.293/04/2022



Slit position and images

Slit position



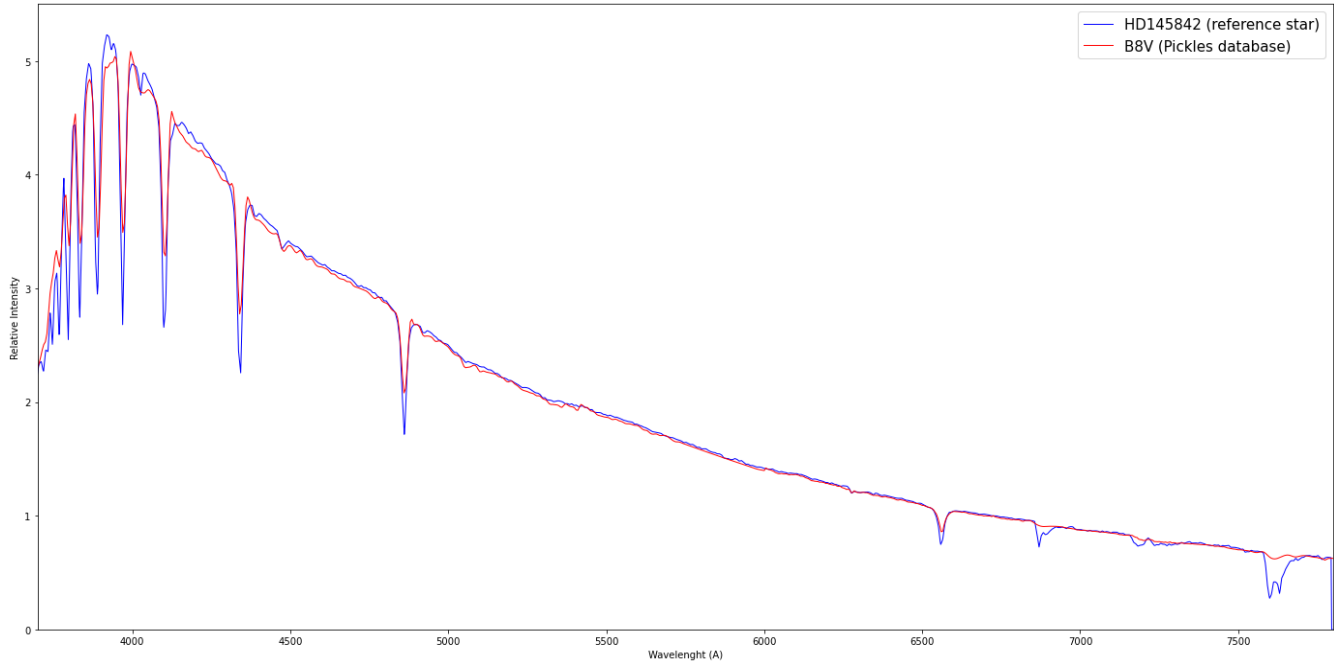
Object picture(s)



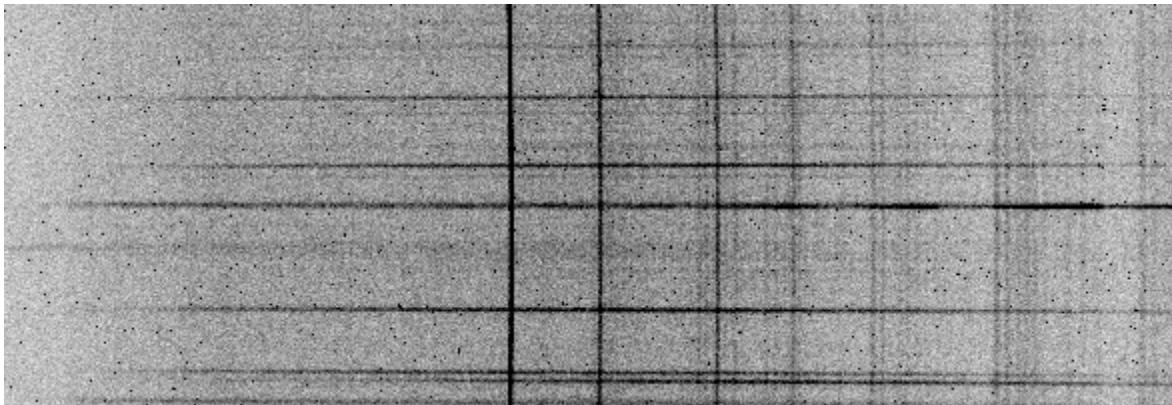


Instrumental Response and 2D Spectrum

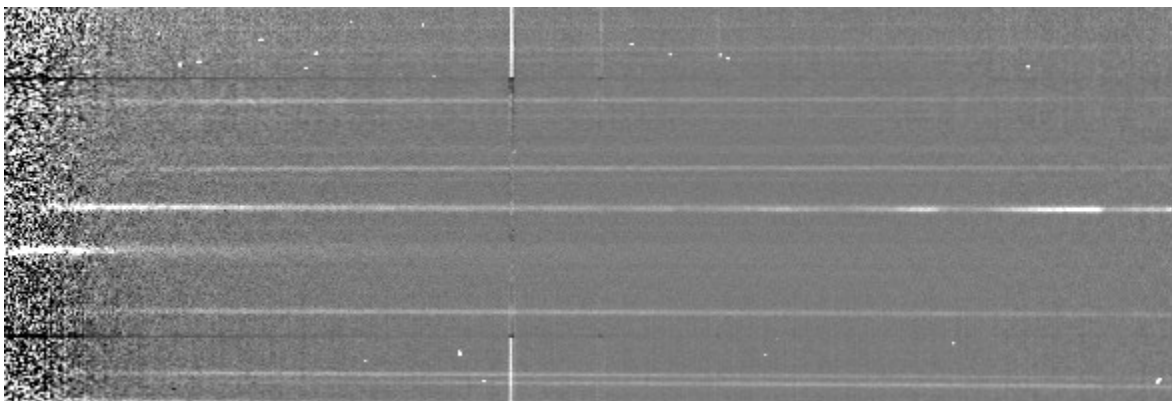
Instrumental response (red = theoretical ref star spectrum ; blue = acquired ref star spectrum with instrumental response correction applied)



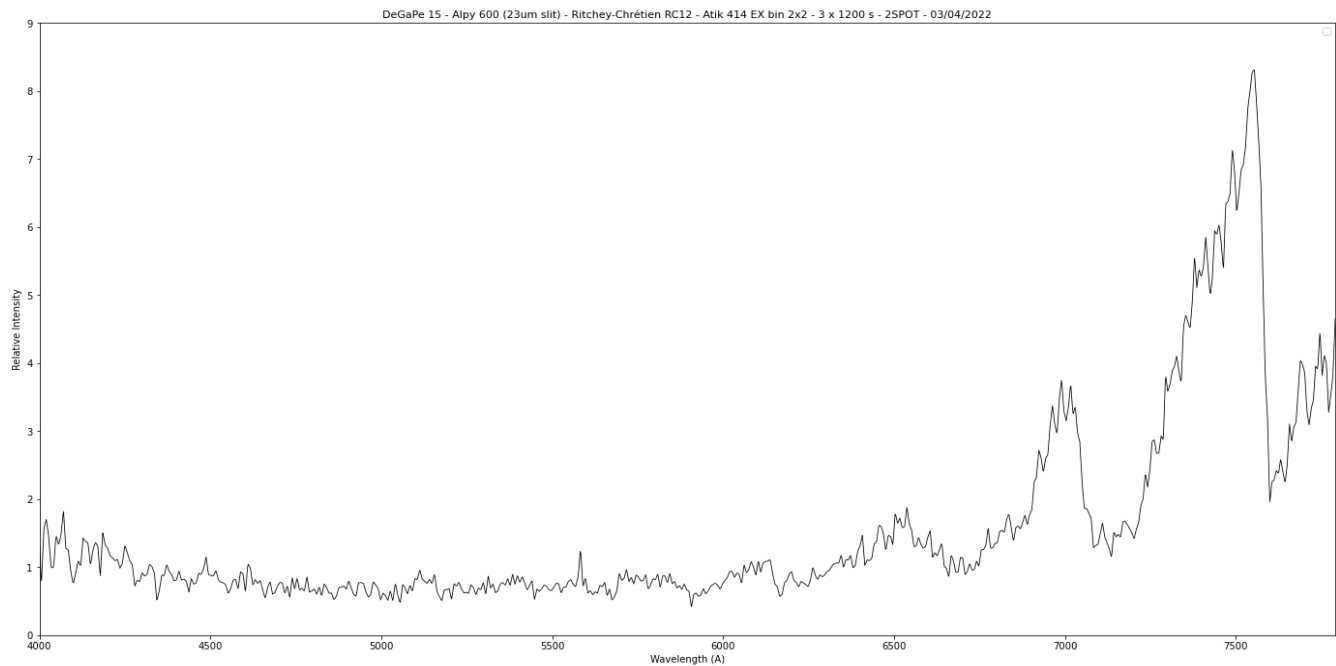
2D Raw spectrum



2D Processed spectrum



Results



Comments

DeGaPe 15 shows a red star profil like DeGaPe 9, 13, 17, etc...

Notice that DeGaPe 15 is just at the edge of the field on the pictures, That's why it is not centered...