



Spectroscopic Record Sheet



Details on acquisitions

Object	Br 15
Coordinates (J2000)	06:23:06.98 +28:00:44.18
Type	Possible NP

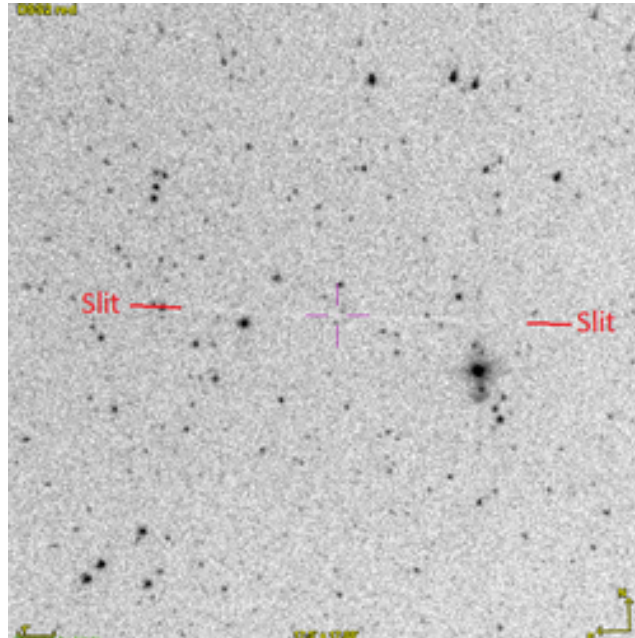
Observation date	3.923/03/2025
Weather conditions	/
Observer	P. Le Dû
Location	Kermerrien Observatory (Porspoder, FR)

Mount	Losmandy G11
Telescope	Newton 200mm F/5
Spectroscope	Alpy 600 (23um slit)
Resolution (bin 1x1)	~1nm at 656 nm
Principal camera	Atik 414 EX
Dispersion (bin 1x1)	~0,3 nm/pixel at 656 nm
Cam temperature	-10°C
Binning	2x2
Guiding camera	Atik 314L+
Data acquisition Soft	Prism v11.2.3.21
Data processing soft	ISIS V6.1.1

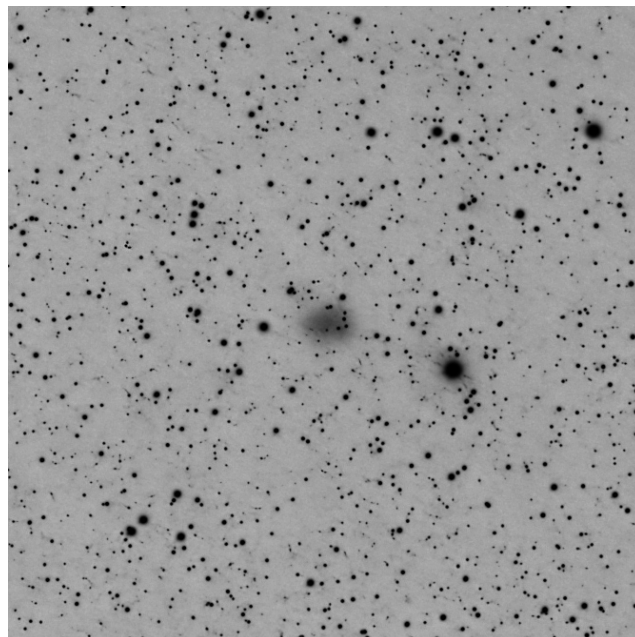
Exposure on object	9 x 1200 s
Master Dark	Corrected
Master Flat	Corrected
Master Offset	Corrected
Neon-Argon calibration	Corrected

Reference star calib.	HD64145_A3V
Exposure on ref star	14 x 10 s
Ref star Sp. date	3.993/03/2025

Slit position



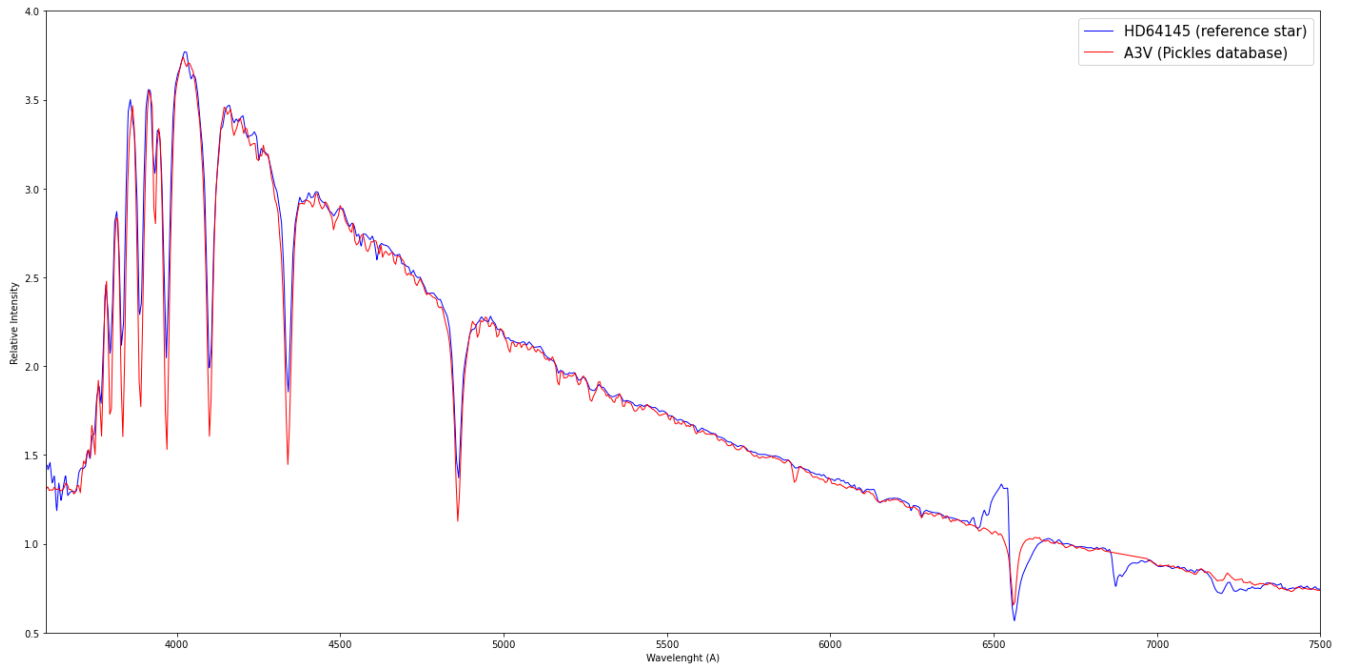
Object picture(s)



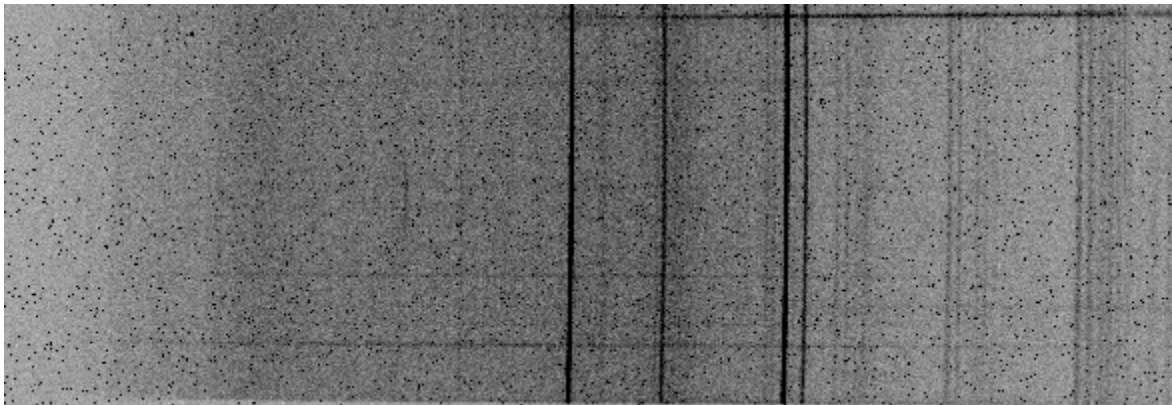


Instrumental Response and 2D Spectra

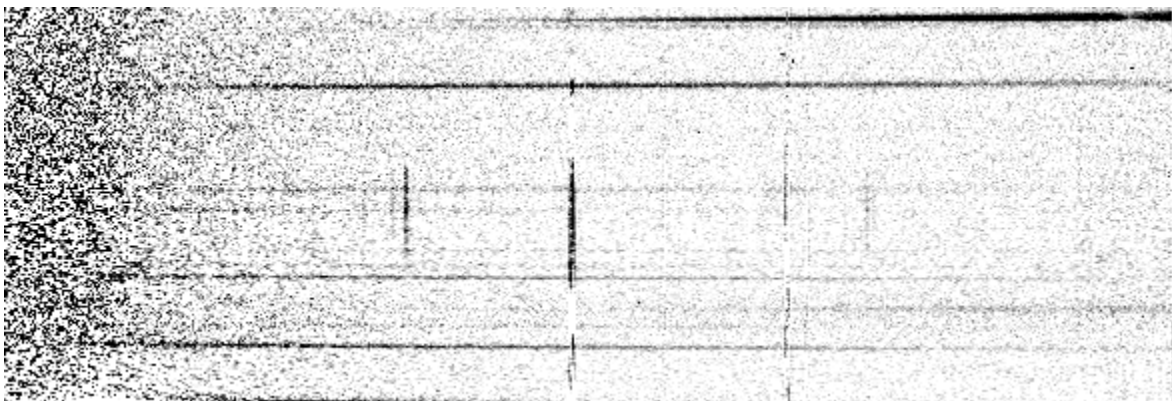
Instrumental response (red = theoretical ref star spectrum ; blue = acquired ref star spectrum with instrumental response correction applied)

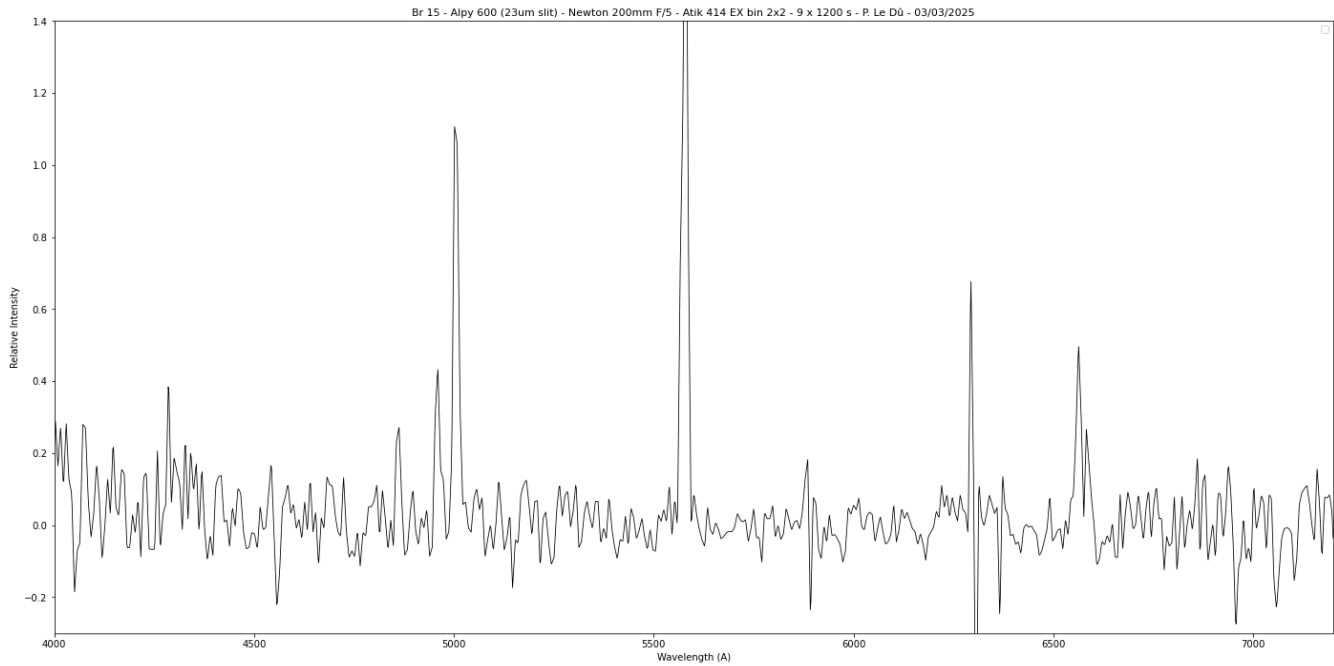


2D Raw spectrum



2D Processed spectrum





Comments

Hbeta, [OIII], Halpha and [NII](6583A) lines detected.
 Br 15 is probably a true PN.