



# Spectroscopic Record Sheet



## Details on acquisitions

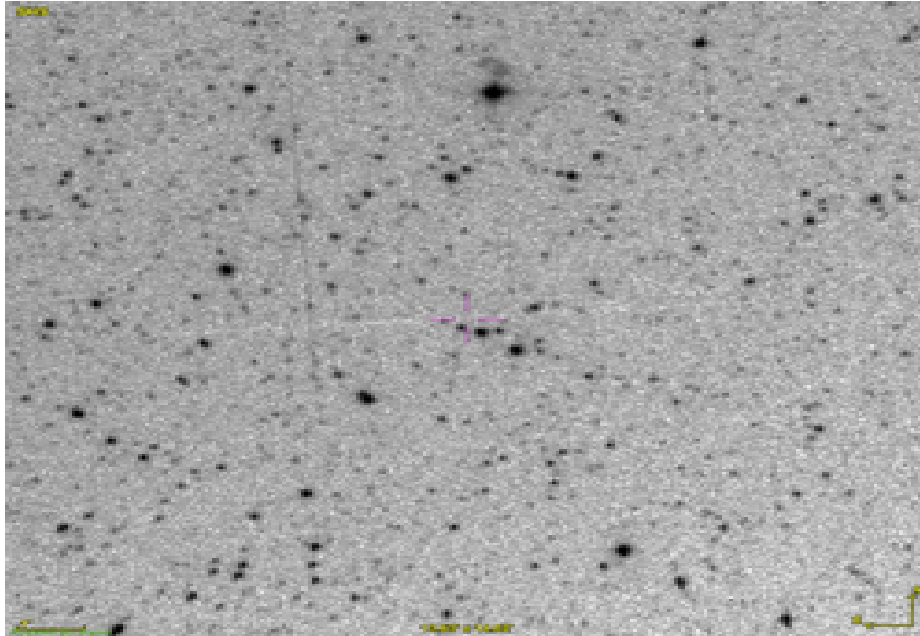
Object	Bic 2
Coordinates (J2000)	12:11:57.66 -69:48:33.40
Type	New candidate

Observation date	19.346/04/2023
Weather conditions	/
Observer	2SPOT
Location	Deep Sky Chile (CL)

Mount	10 Micron GM3000 HPS
Telescope	Newton 300mm F/4
Spectroscope	Alpy 600 (23um slit)
Resolution (bin 1x1)	~1nm at 656 nm
Principal camera	Atik 414 EX
Dispersion (bin 1x1)	~0,3 nm/pixel at 656 nm
Cam temperature	-10°C
Binning	2x2
Guiding camera	Atik 314L+
Data acquisition Soft	Prism v10.4.11.908
Data processing soft	ISIS V6.1.1

Exposure on object	4 x 1200 s
Master Dark	Corrected
Master Flat	Corrected
Master Offset	Corrected
Neon-Argon calibration	Corrected
Reference star calib.	HD114911_B8V
Exposure on ref star	13 x 12 s
Ref star Sp. date	19.387/04/2023

## Slit position



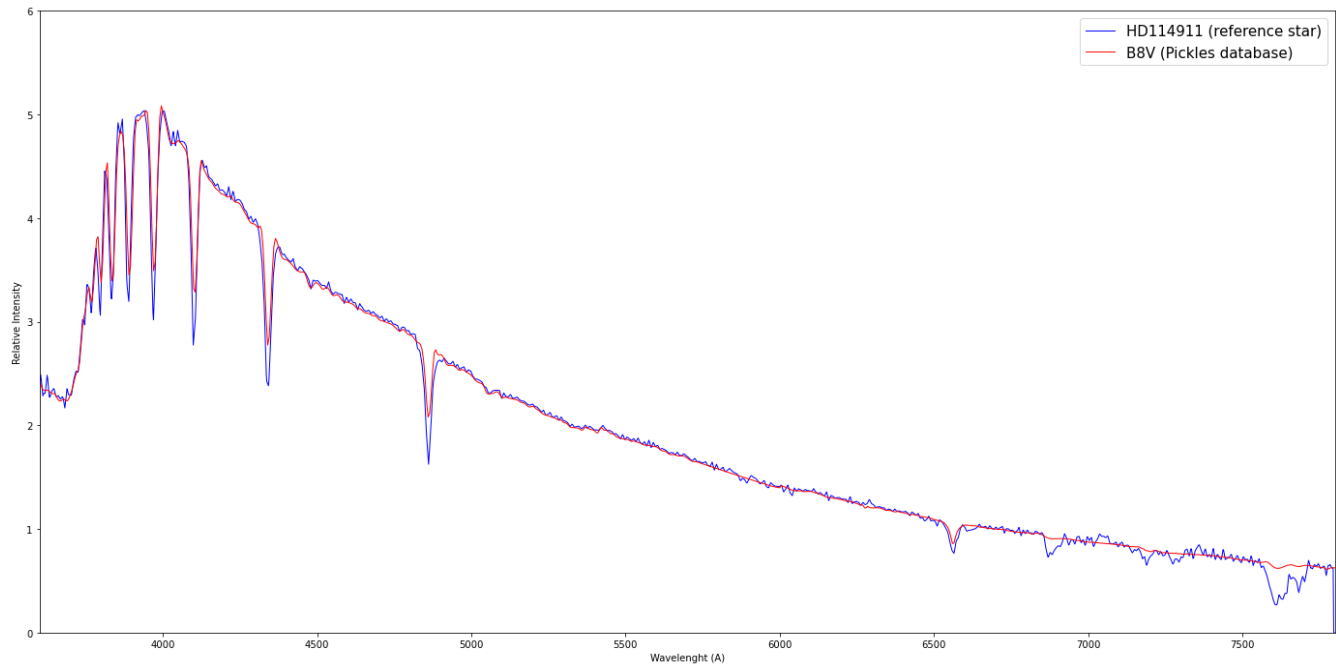
## Object picture(s)



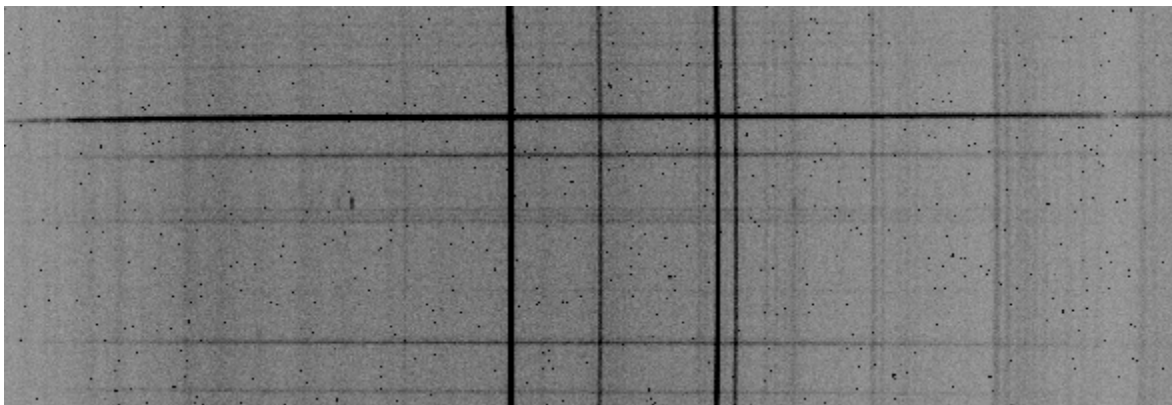


# Instrumental Response and 2D Spectra

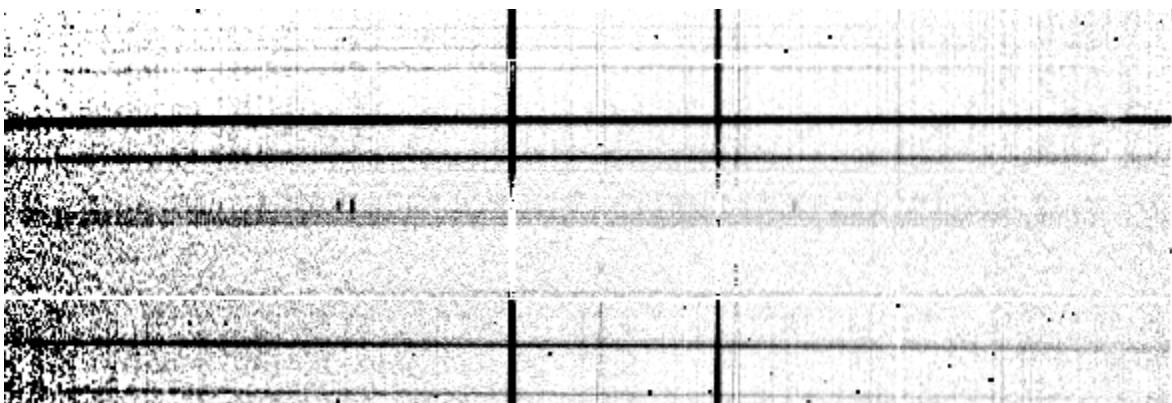
Instrumental response (red = theoretical ref star spectrum ; blue = acquired ref star spectrum with instrumental response correction applied)

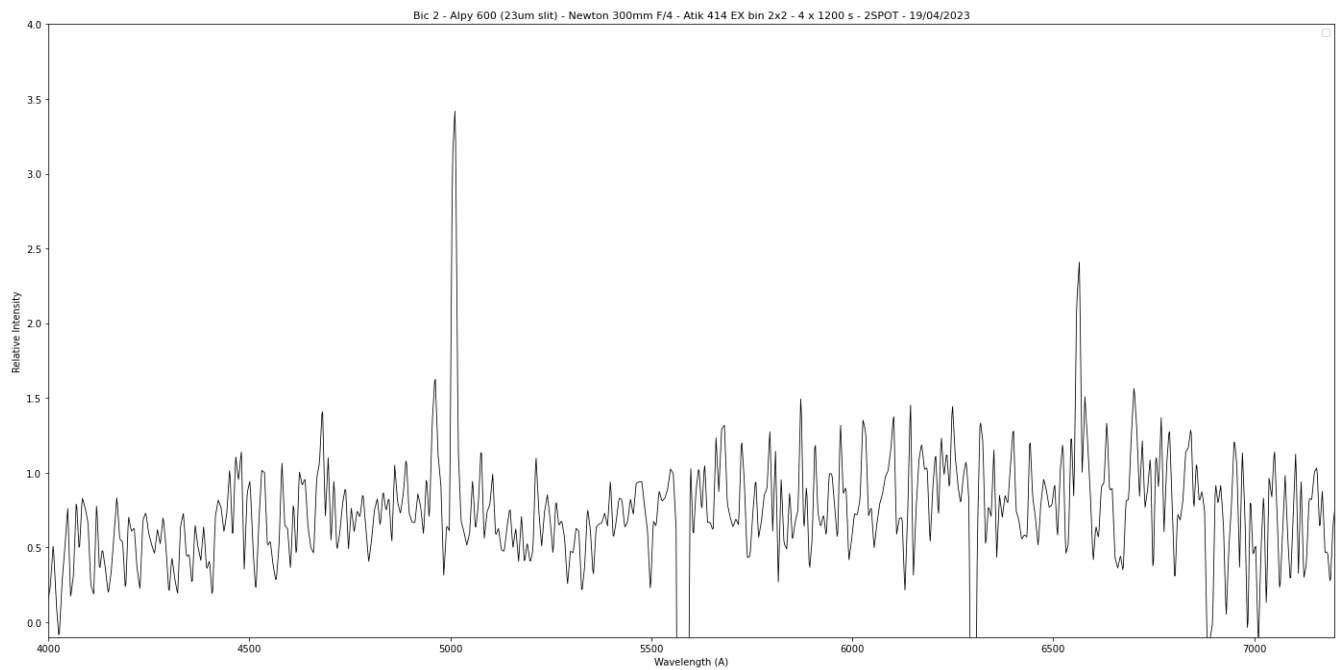


## 2D Raw spectrum



## 2D Processed spectrum





## Comments

Spectrum showing the emission lines of HeII(4686), the [OIII] doublet and Halpha.  
Bic 2 is certainly a true planetary nebula.