



Spectroscopic Record Sheet



Details on acquisitions

Object	Su 11
Coordinates (J2000)	05:57:31.42 -67:09:30.96
Type	New candidate

Observation date	8.119/02/2024
Weather conditions	/
Observer	2SPOT
Location	Deep Sky Chile (CL)

Mount	10 Micron GM3000 HPS
Telescope	Newton 300mm F/4
Spectroscope	Alpy 600 (23um slit)
Resolution (bin 1x1)	~1nm at 656 nm
Principal camera	Atik 414 EX
Dispersion (bin 1x1)	~0,3 nm/pixel at 656 nm
Cam temperature	-10°C
Binning	2x2
Guiding camera	ASI 178MM
Data acquisition Soft	Prism v11.2.3.21
Data processing soft	ISIS V6.1.1

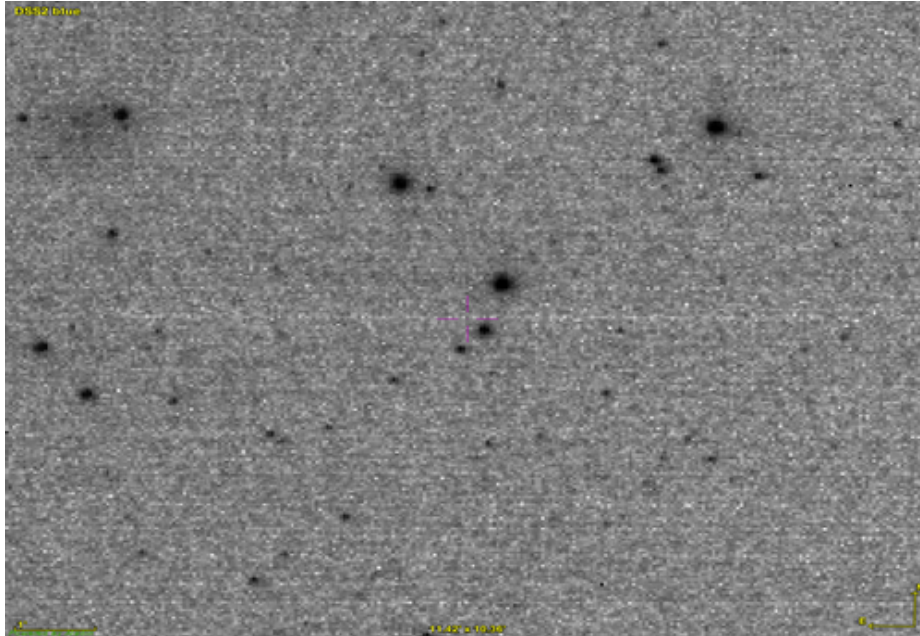
Exposure on object	6 x 1200 s
Master Dark	Corrected
Master Flat	Corrected
Master Offset	Corrected
Neon-Argon calibration	Corrected

Reference star calib.	HD42525_A0V
Exposure on ref star	14 x 15 s
Ref star Sp. date	8.172/02/2024

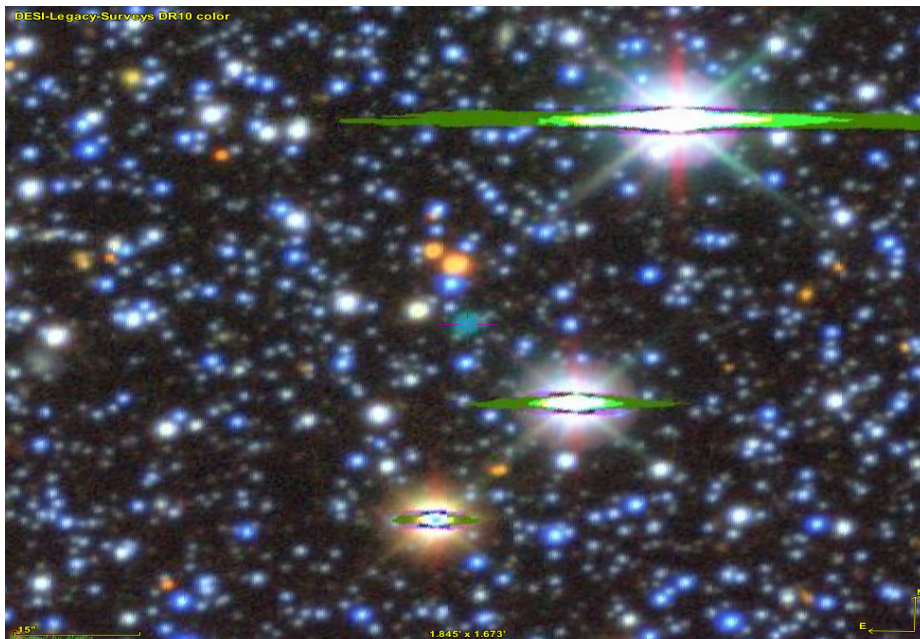


Slit position and images

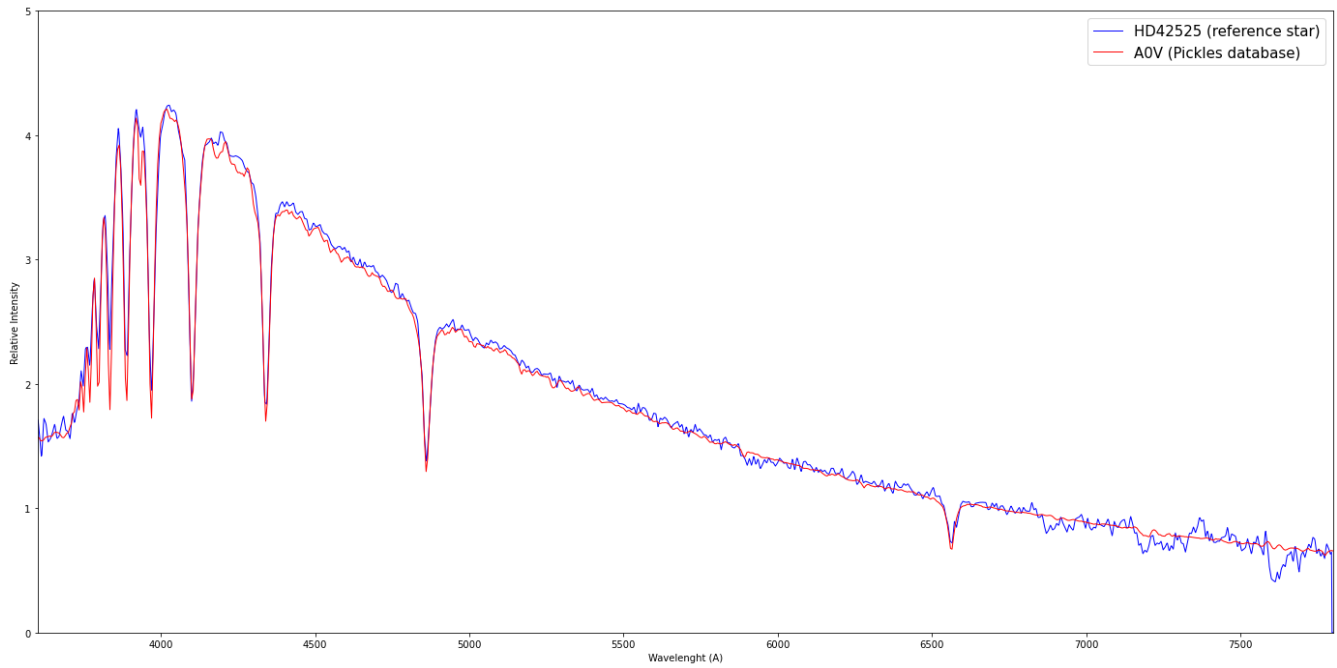
Slit position



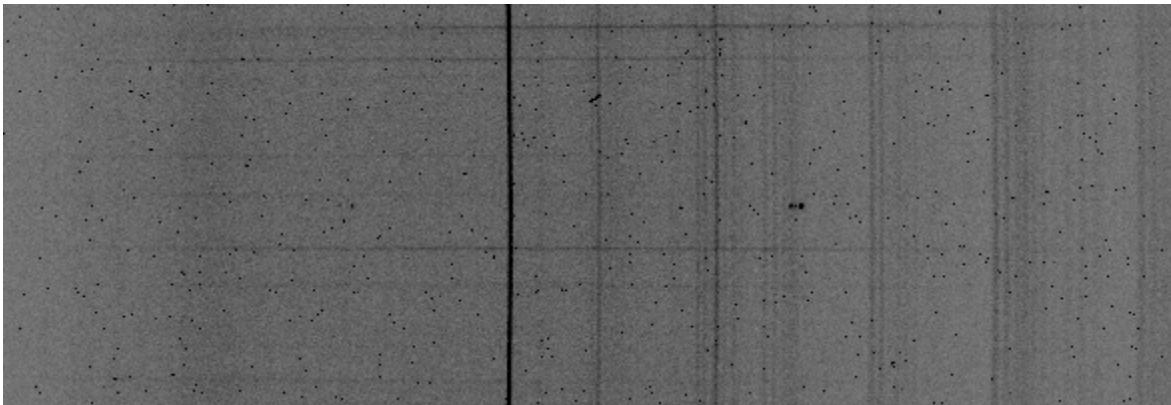
Object picture(s)



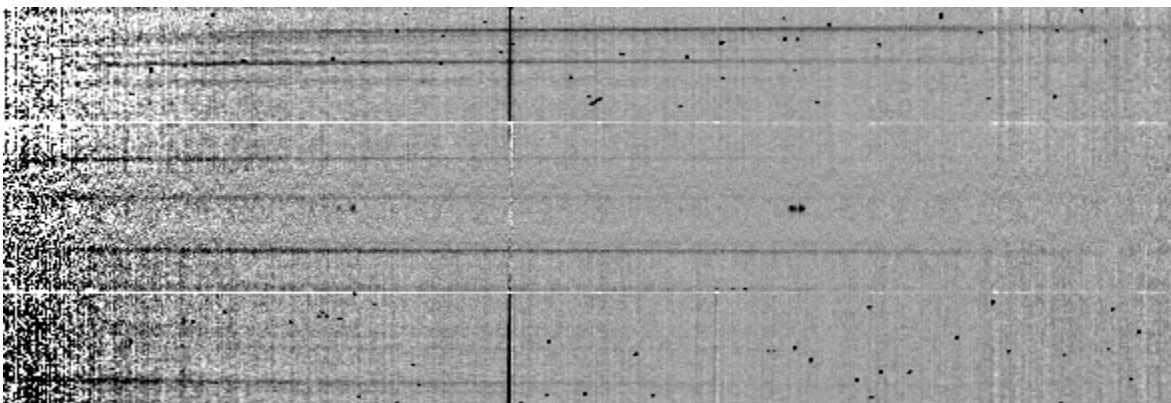
Instrumental response (red = theoretical ref star spectrum ; blue = acquired ref star spectrum with instrumental response correction applied)



2D Raw spectrum

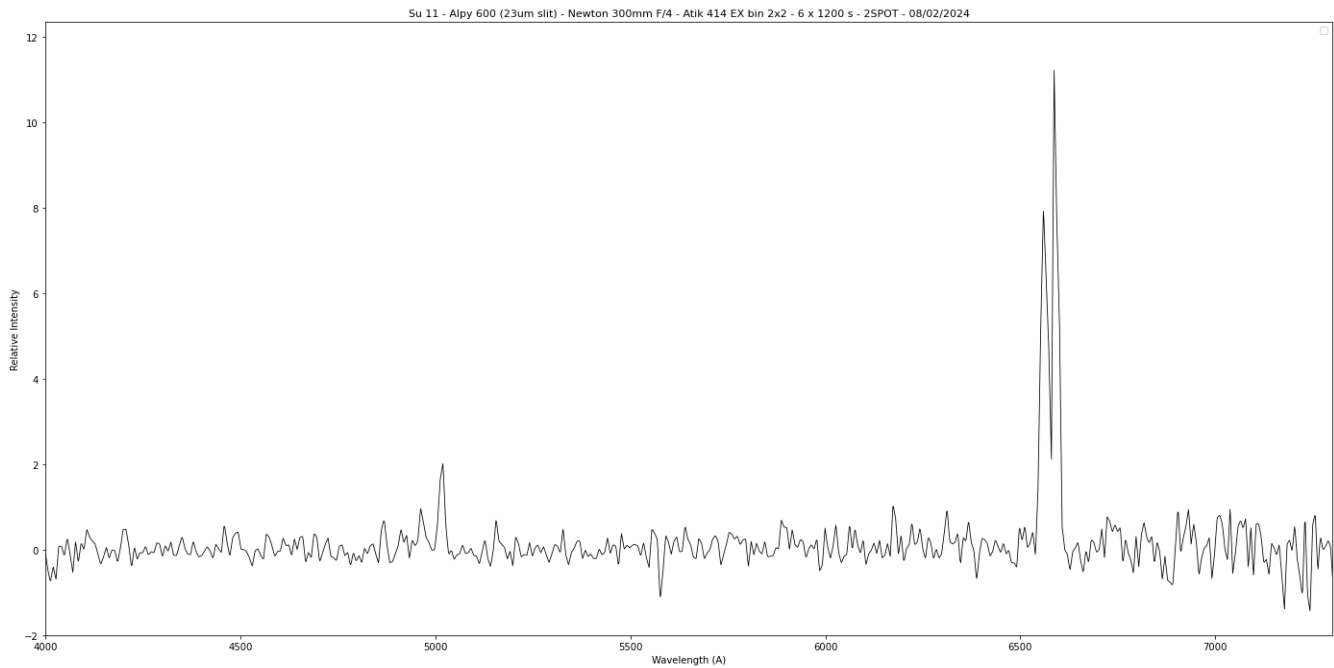


2D Processed spectrum





Results



Comments

[OIII] lines and strong [NII] lines detected.
Small redshift observed on the spectrum.
Su 11 shows the nebular lines of a true PN.