



Spectroscopic Record Sheet



Details on acquisitions

Object	StDr46
Coordinates (J2000)	02:15:34.62 +60:11:00.90
Type	PN Candidate

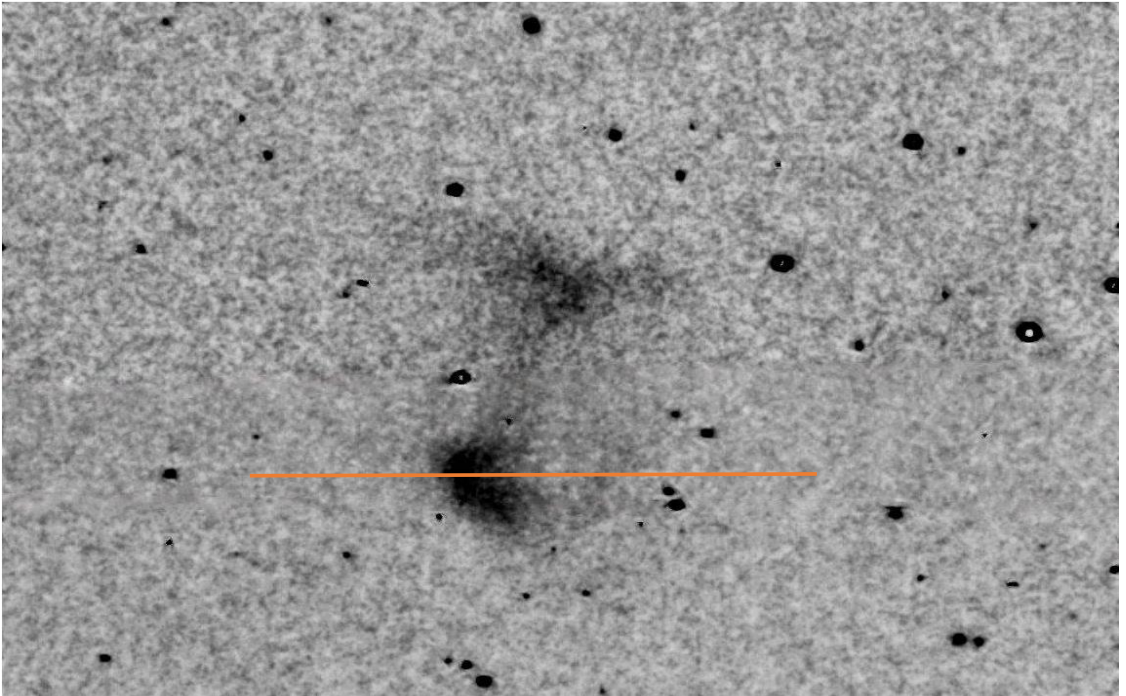
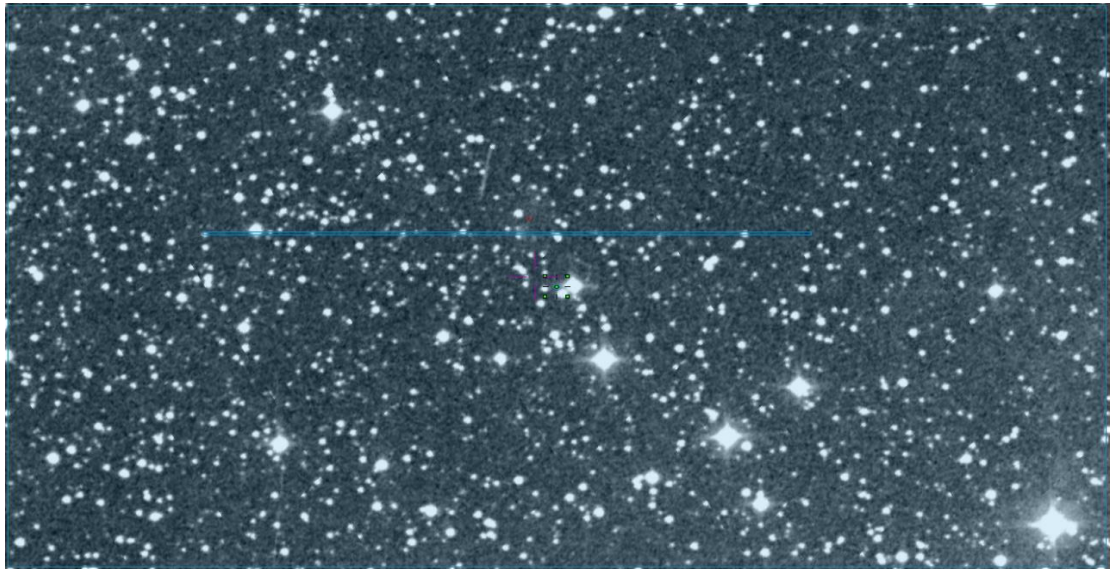
Observation date	14.085/07/2020 (d/m/y)
Meteorological conditions	20°C
Observer	L.Mulato
Location	Cornillon France

Mount	NEQ6
Telescope	Newton Skywatcher 200 mm F/5
Spectrograph	Alpy 600 - 23 μ m slit
Resolution (bin 1x1)	\sim 1 Å at λ 656 nm
Science camera	ATIK 414 EX
Dispersion (bin 1x1)	\sim 0,3 nm/pixel at λ 656 nm
Cam Temperature	0 °C
Binning	2x2
Guiding camera	ASI290 MM non cooled
Data acquisition Soft	PRISM V10
Data processing Soft	Isis V5.9.3

Exposure on object	9	x	1200	s
Master Dark date	28/06/2020		(d/m/y)	
Dark Exposure	18	x	1200	s
Dark Temperature	0		°C	
Master Offset date	22/05/2020		(d/m/y)	
Master Flat date	24/08/2020		(d/m/y)	
Neon-Argon calib. date	15/08/2020		(d/m/y)	
Reference star calib.	hd19065			
Exposure on ref star	21	x	10	s
Ref Star Sp. date	15.145/08/2020			

Image Ha

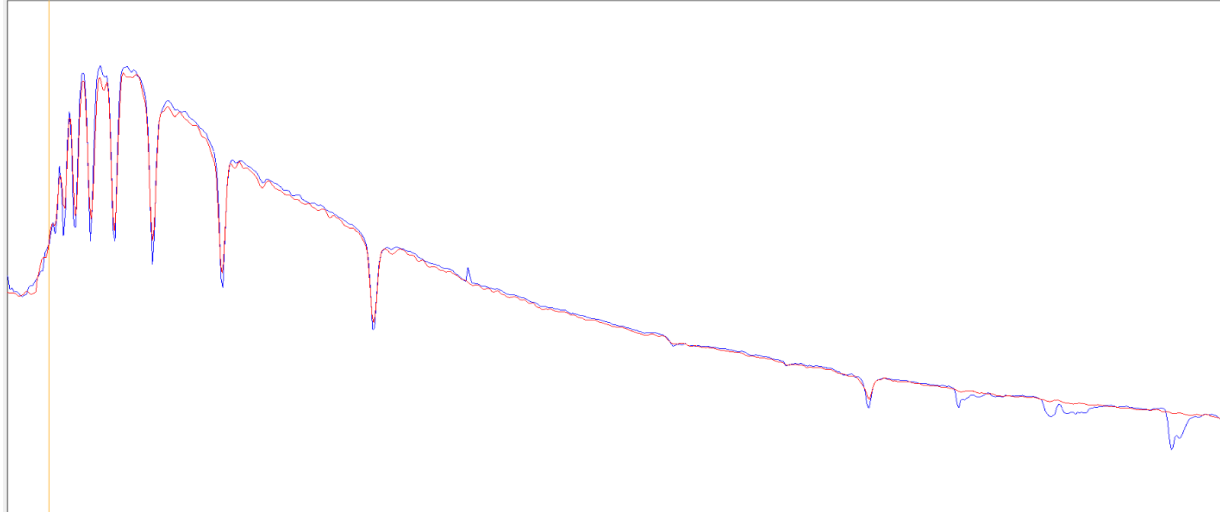
© IPHAS

Slit position
IPHAS

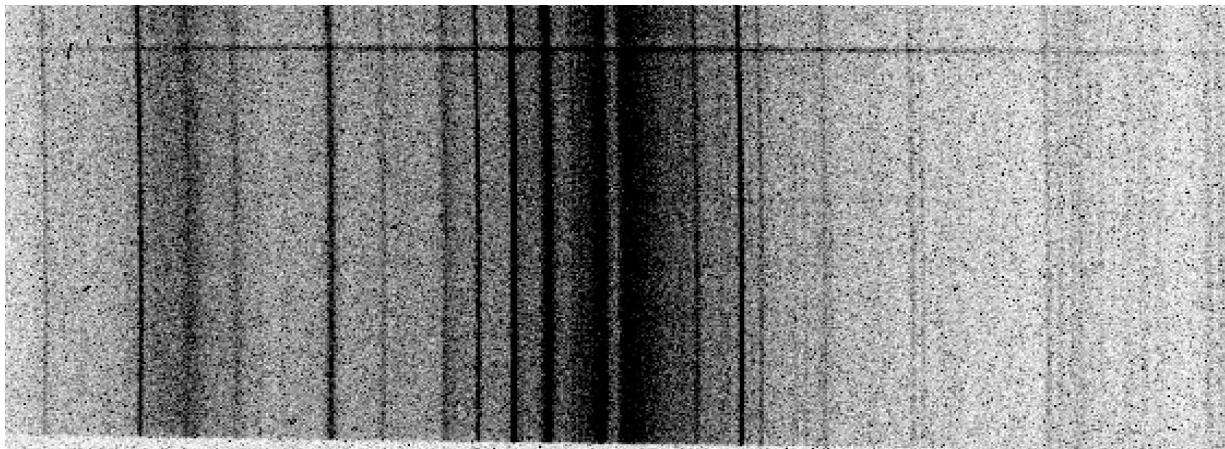


Instrumental Response and 2D Spectrum

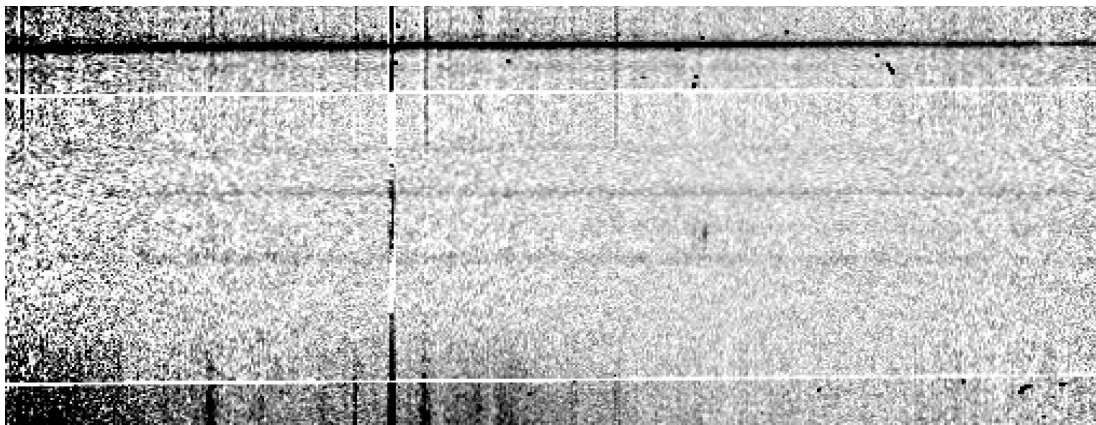
Instrumental response (red = theoretical ref star spectrum ; blue = acquired ref star spectrum with instrumental response correction applied)

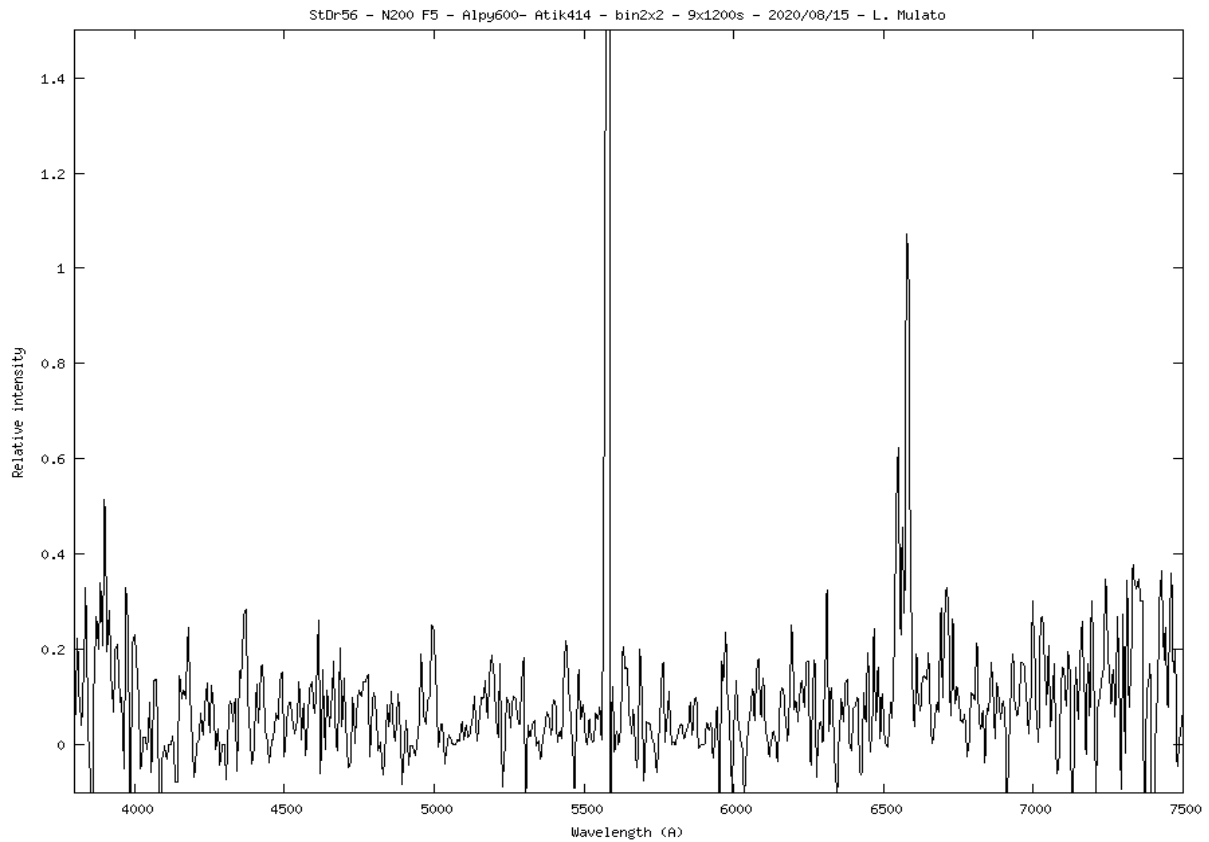


2D Raw spectrum



Processed 2D spectrum





Comments :

Detected lines : [N II] >> H α , nothing in blue.

StDr 46 is a faint and extended nebula, could be a bipolar PN.