



Spectroscopic Record Sheet



Details on acquisitions

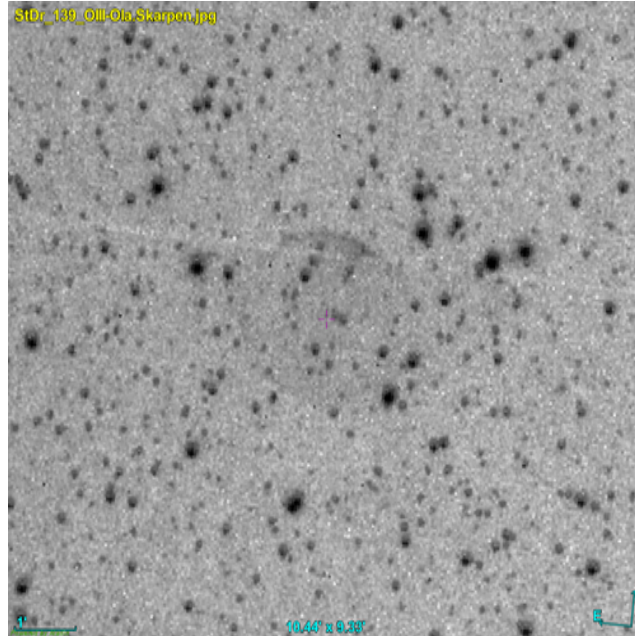
Object	StDr 139
Coordinates (J2000)	20:10:09.92 +46:43:18.98
Type	/

Observation date	8.961/10/2021
Weather conditions	Temp: 13.6°C Hygro: 66% Patm:1022hpa
Observer	P. Le Dû
Location	Kermerrien Observatory (Porspoder, FR)

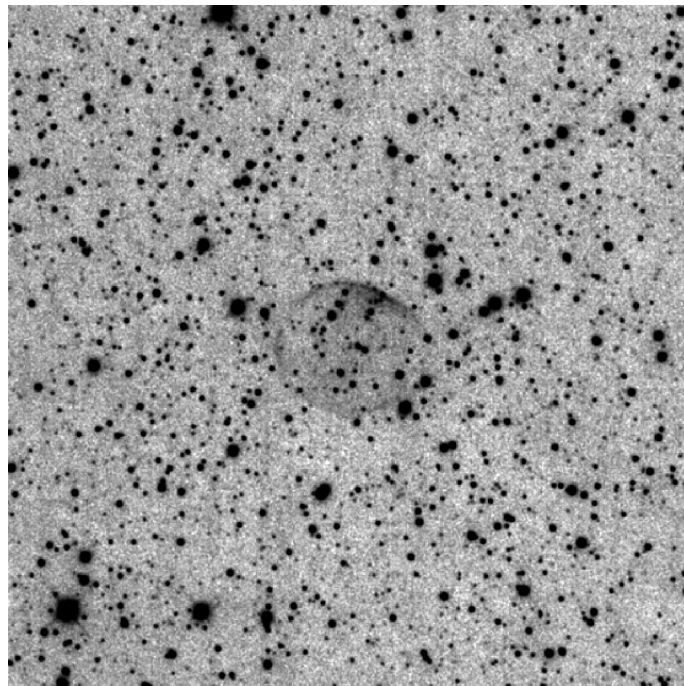
Mount	Losmandy G11
Telescope	Newton 200mm F/5
Spectroscope	Alpy 600 (23um slit)
Resolution (bin 1x1)	~1 Å at I656 nm
Principal camera	Atik 414 EX
Dispersion (bin 1x1)	~0,3 nm/pixel at I656 nm
Cam temperature	-10°C
Binning	2x2
Guiding camera	Atik 314L+
Data acquisition Soft	Prism v10.4.11.908
Data processing soft	ISIS V6.1.1

Exposure on object	13 x 1200 s
Master Dark	Corrected
Master Flat	Corrected
Master Offset	Corrected
Neon-Argon calibration	Corrected
Reference star calib.	HD210715_A5V
Exposure on ref star	14 x 15 s
Ref star Sp. date	9.066/10/2021

Slit position



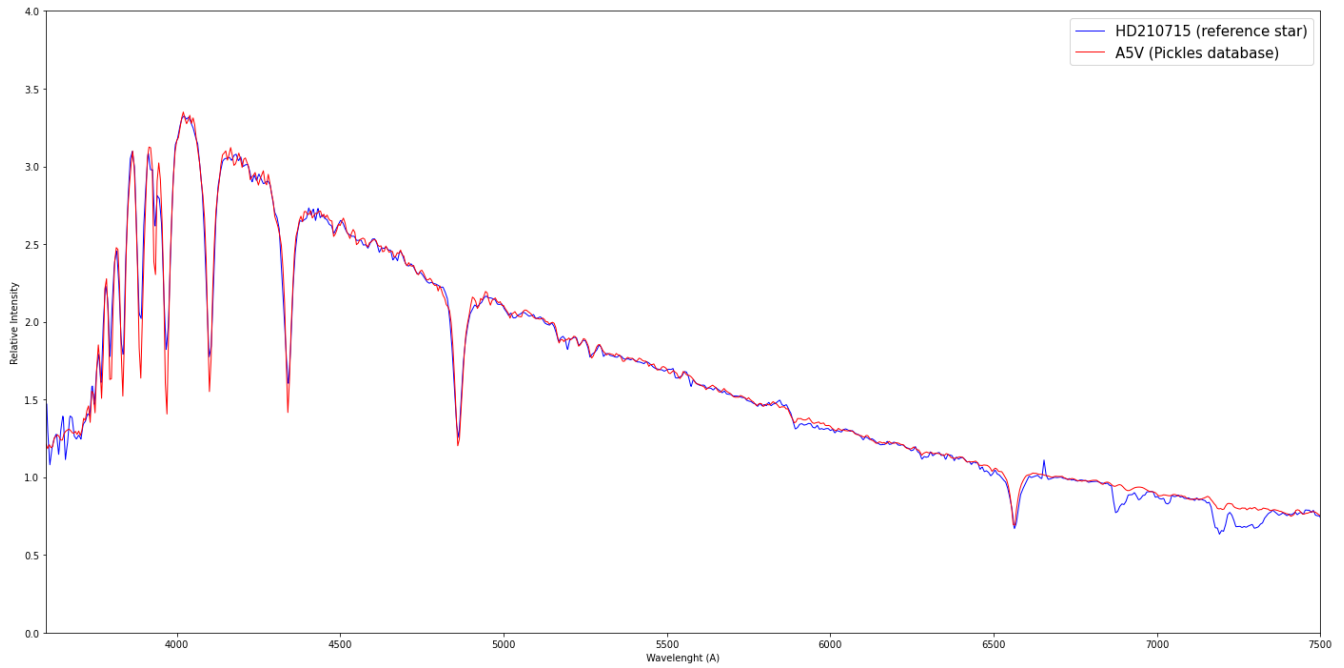
Object picture(s)



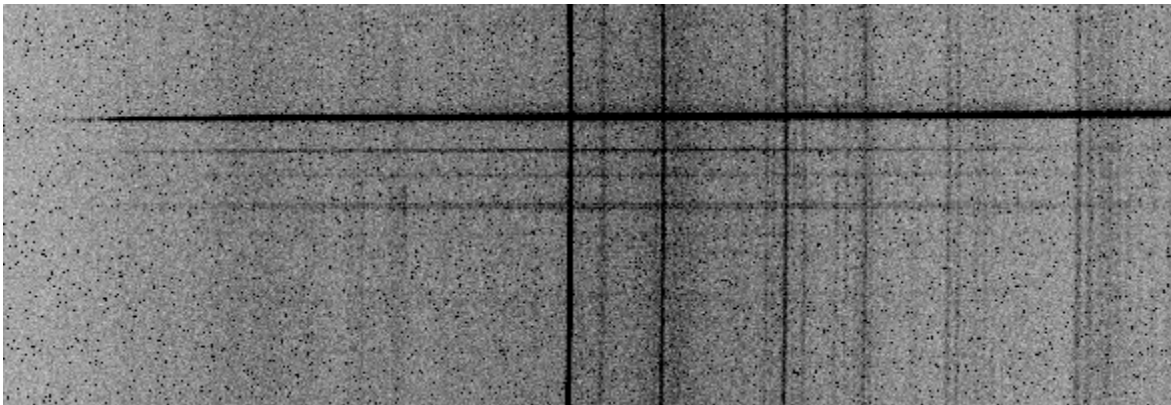


Instrumental Response and 2D Spectrum

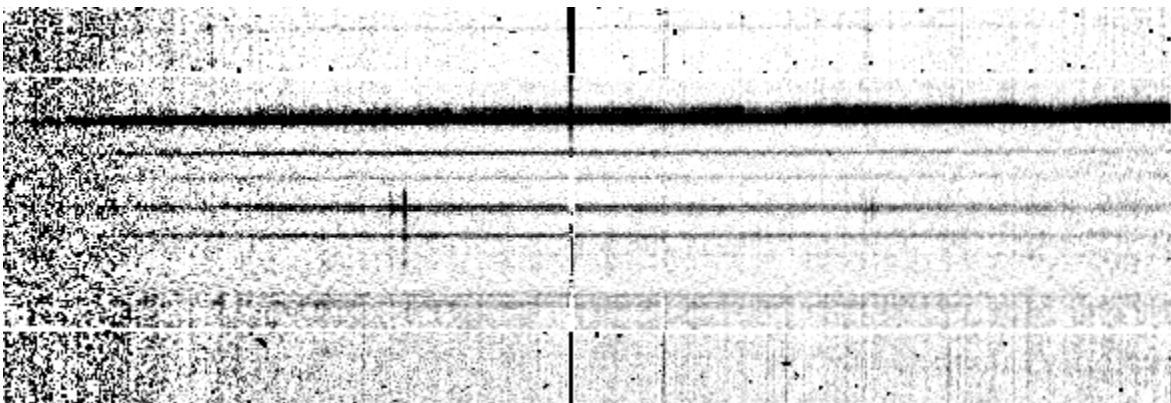
Instrumental response (red = theoretical ref star spectrum ; blue = acquired ref star spectrum with instrumental response correction applied)

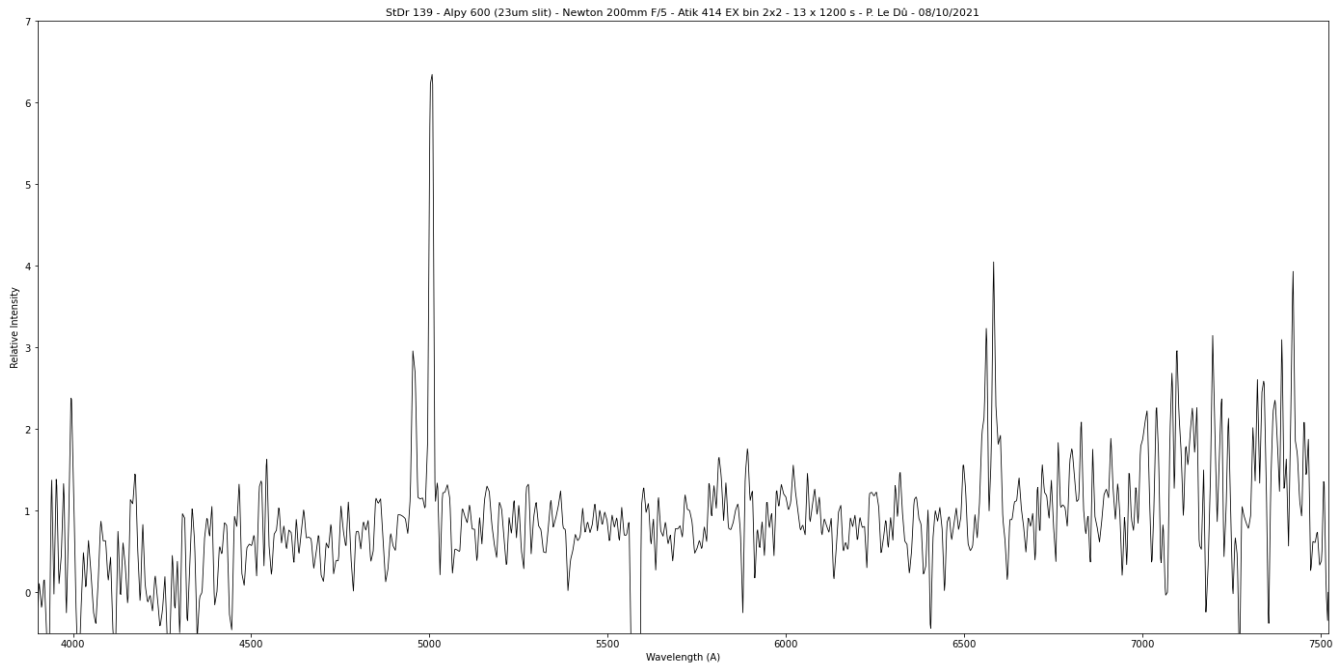


2D Raw spectrum



2D Processed spectrum





Comments

[OIII], Halpha and [NII] lines detected. Strong [OIII] and [NII] lines.
Object with PN characteristics