



## Spectroscopic Record Sheet



### Details on acquisitions

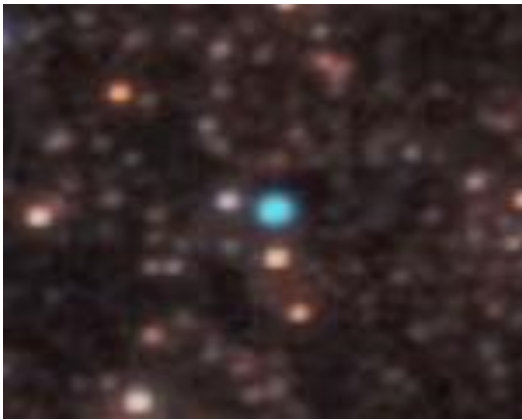
Object	StDr102
Coordinates (J2000)	18:08:03.66 -24:50:59.09
Type	PN candidate

Observation date	4.830/09/2020	(d/m/y)
Meteorological conditions	20°C	
Observer	L.Mulato	
Location	Cornillon	France

Mount	NEQ6
Telescope	Newton Skywatcher 200 mm F/5
Spectrograph	Alpy 600 - 23 $\mu\text{m}$ slit
Resolution (bin 1x1)	$\sim 1 \text{ \AA}$ at $\lambda 656 \text{ nm}$
Science camera	ATIK 414 EX
Dispersion (bin 1x1)	$\sim 0,3 \text{ nm/pixel}$ at $\lambda 656 \text{ nm}$
Cam Temperature	0 °C
Binning	2x2
Guiding camera	ASI290 MM non cooled
Data acquisition Soft	PRISM V10
Data processing Soft	Isis V5.9.3

Exposure on object	5	x	600	s
Master Dark date	22/05/2020	(d/m/y)		
Dark Exposure	7	x	600	s
Dark Temperature	0	°C		
Master Offset date	22/05/2020	(d/m/y)		
Master Flat date	09/04/2020	(d/m/y)		
Neon-Argon calib. date	09/04/2020	(d/m/y)		
Reference star calib.	hd188899_A2V			
Exposure on ref star	17	x	7	s
Ref Star Sp. date	4.855/09/2020			

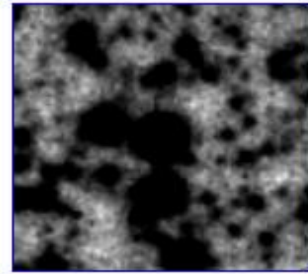
Image N. Outters



SHS Ha

[FITS.gz](#)

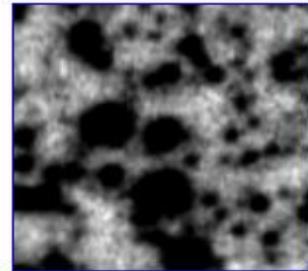
[Tab](#)



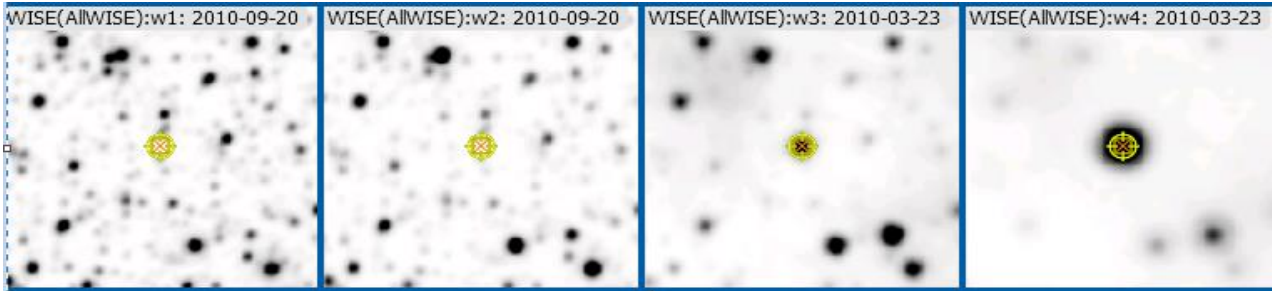
Short Red

[FITS.gz](#)

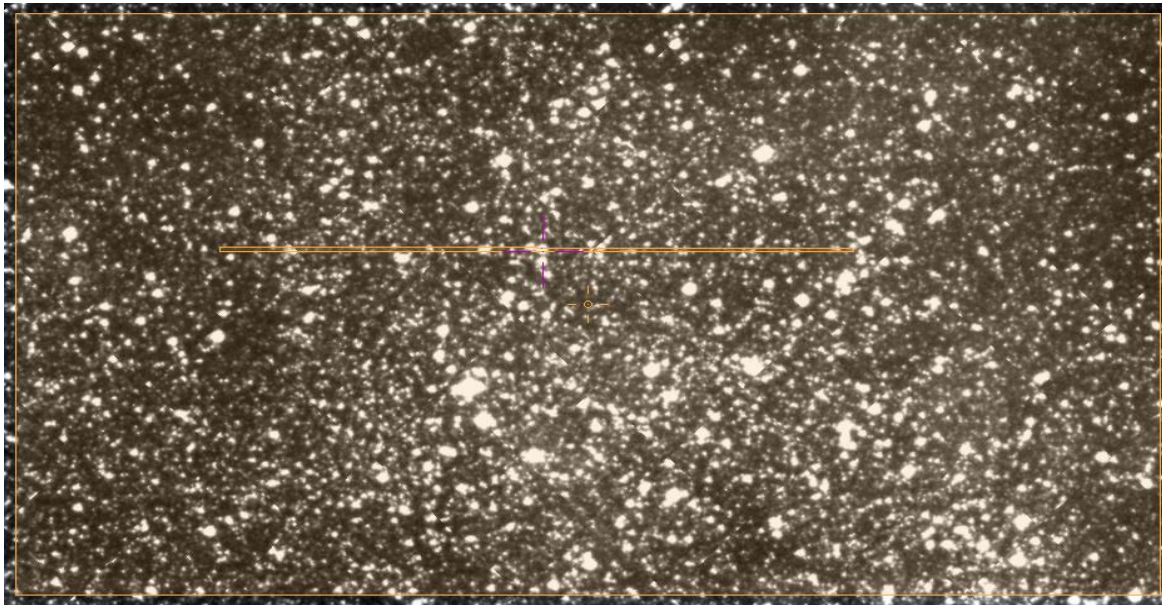
[Tab](#)



WISE bands



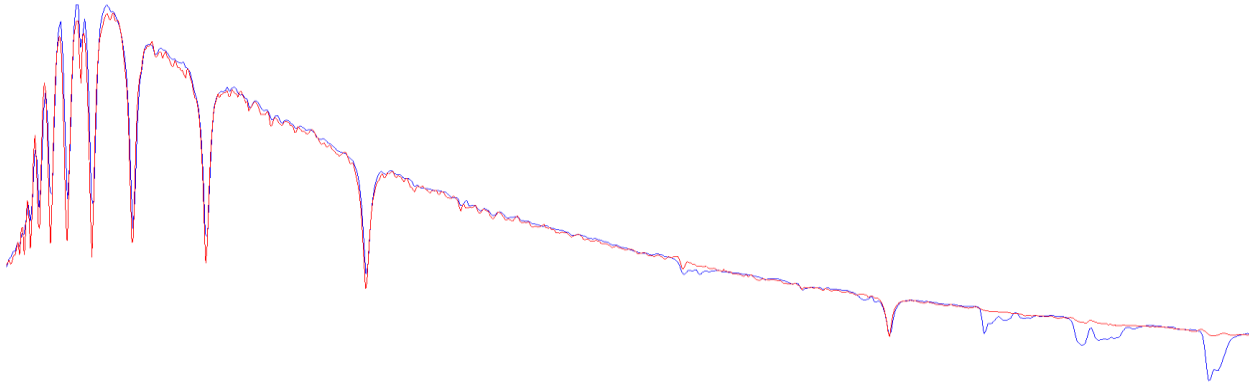
Slit Position SHS



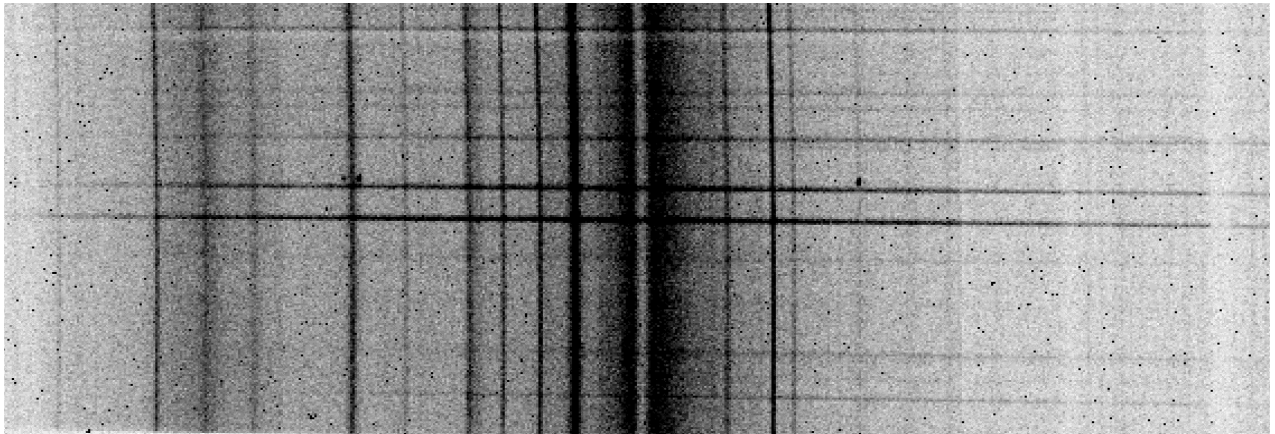


# Instrumental Response and 2D Spectrum

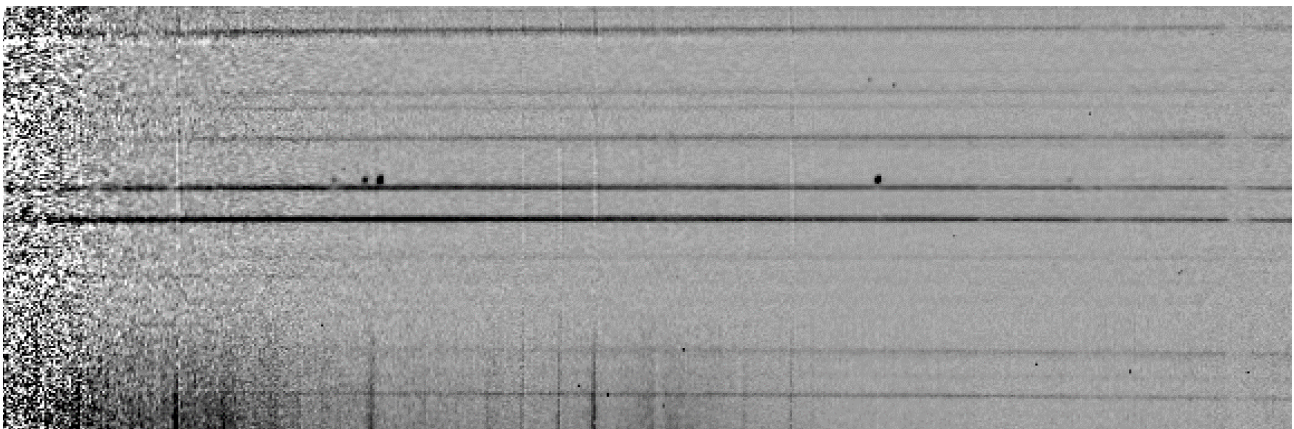
Instrumental response (red = theoretical ref star spectrum ; blue = acquired ref star spectrum with instrumental response correction applied)

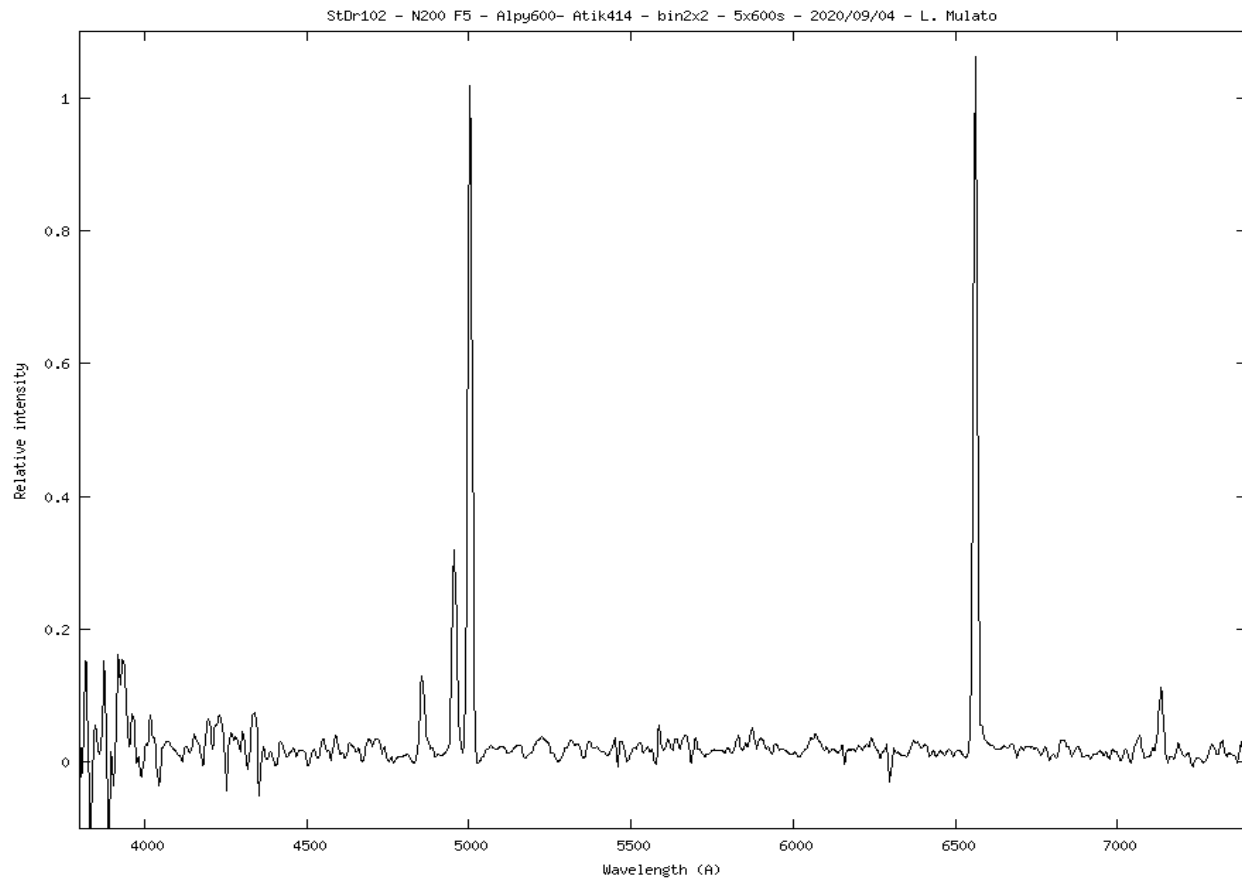


2D Raw spectrum



Processed 2D spectrum





**Comments :**

Detected lines : [OIII]>>H-beta, Ha, [ArIII].  
 Good WISE detection.  
 StDr102 is likely a PN of medium excitation.

