



# Spectroscopic Record Sheet



## Details on acquisitions

Object	Pre 62
Coordinates (J2000)	10:13:18.64 -57:58:16.19
Type	New candidate

Observation date	7.189/01/2024
Weather conditions	/
Observer	2SPOT
Location	Deep Sky Chile (CL)

Mount	10 Micron GM3000 HPS
Telescope	Newton 300mm F/4
Spectroscope	Alpy 600 (23um slit)
Resolution (bin 1x1)	~1nm at 656 nm
Principal camera	Atik 414 EX
Dispersion (bin 1x1)	~0,3 nm/pixel at 656 nm
Cam temperature	-10°C
Binning	2x2
Guiding camera	Atik 314L+
Data acquisition Soft	Prism v11.2.3.21
Data processing soft	ISIS V6.1.1

Exposure on object	11 x 1200 s
Master Dark	Corrected
Master Flat	Corrected
Master Offset	Corrected
Neon-Argon calibration	Corrected
Reference star calib.	HD103101_A2V
Exposure on ref star	14 x 3 s
Ref star Sp. date	7.277/01/2024

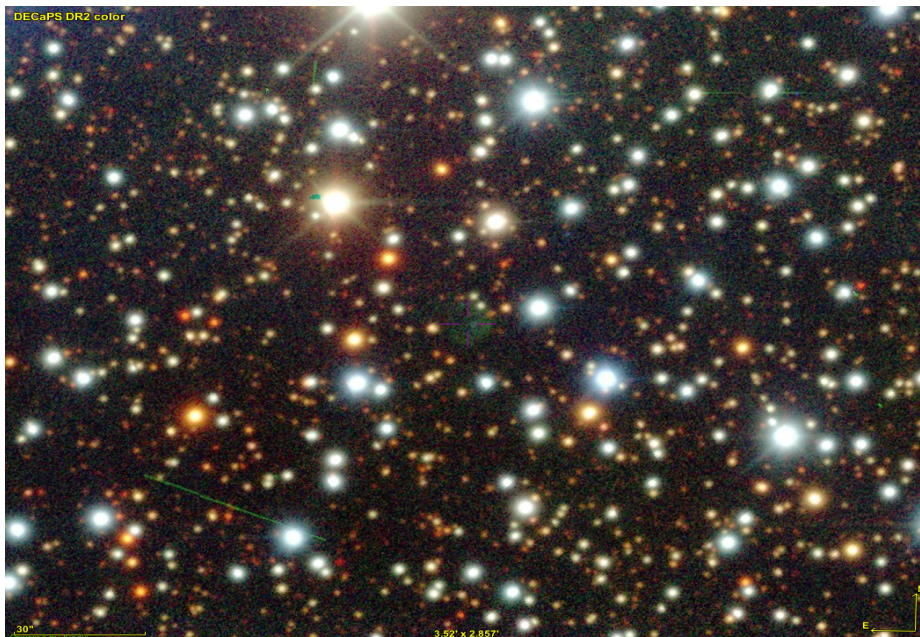


# Slit position and images

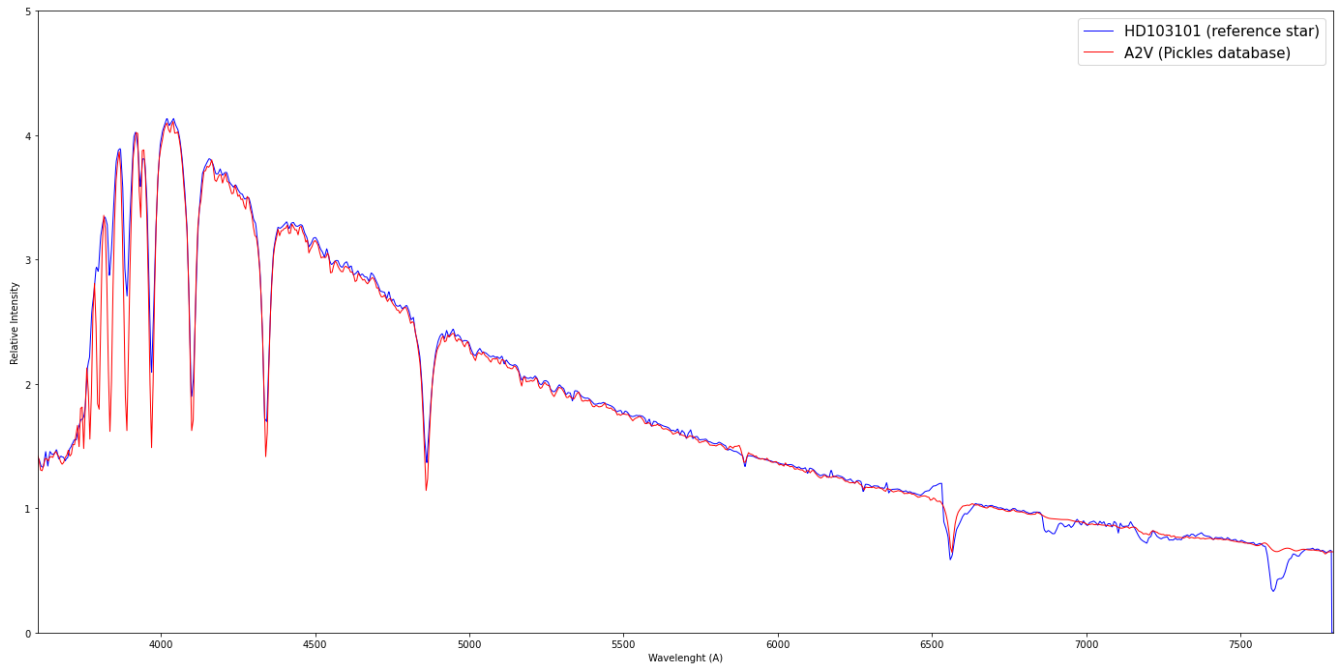
## Slit position



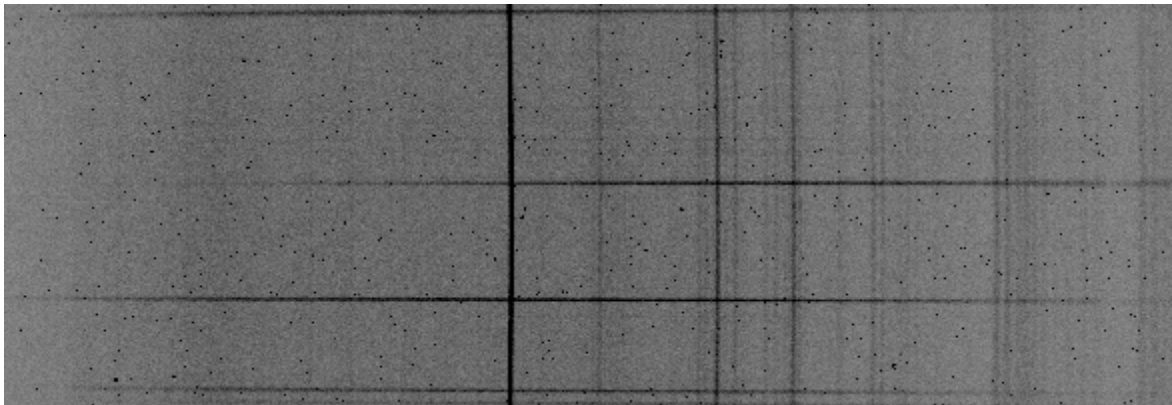
## Object picture(s)



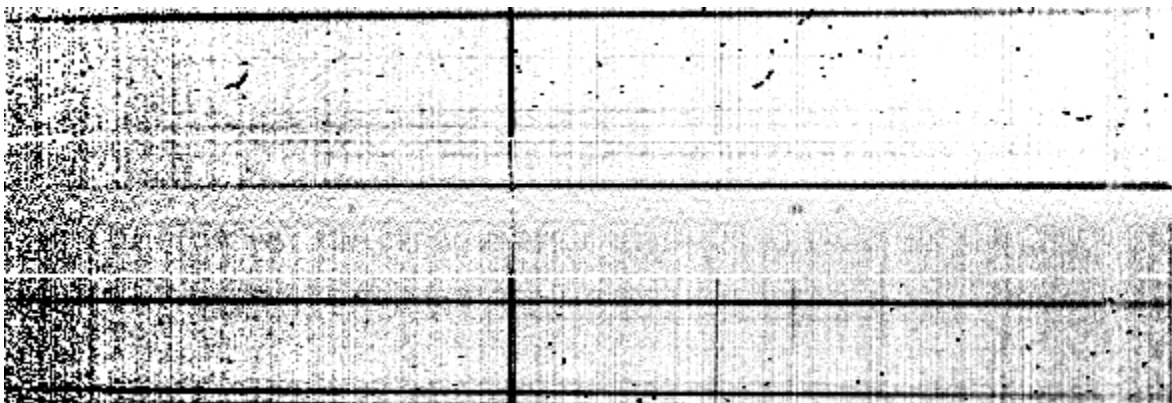
Instrumental response (red = theoretical ref star spectrum ; blue = acquired ref star spectrum with instrumental response correction applied)

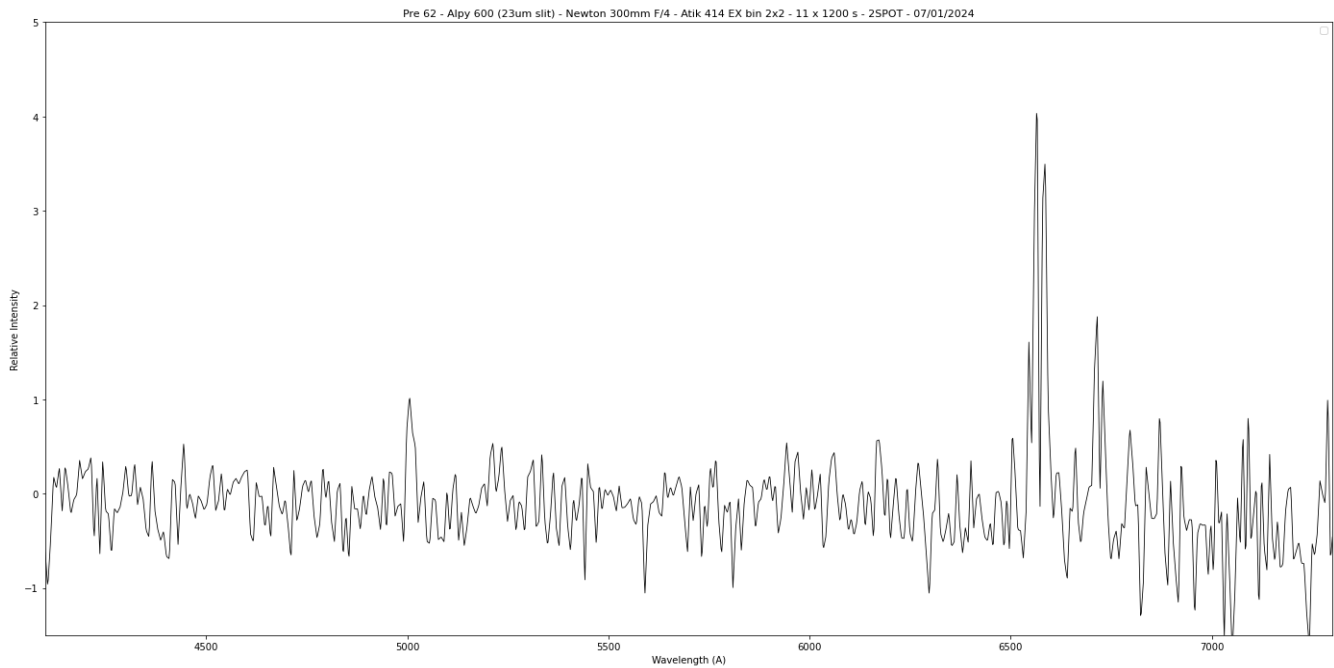


## 2D Raw spectrum



## 2D Processed spectrum





## Comments

[OIII](5007A), Halpha, [NII] and [SII](6716A) lines detected.  
 Weak [OIII] line but strong Halpha and [NII] lines  
 Pre 62 is probably a true PN