



Spectroscopic Record Sheet



Details on acquisitions

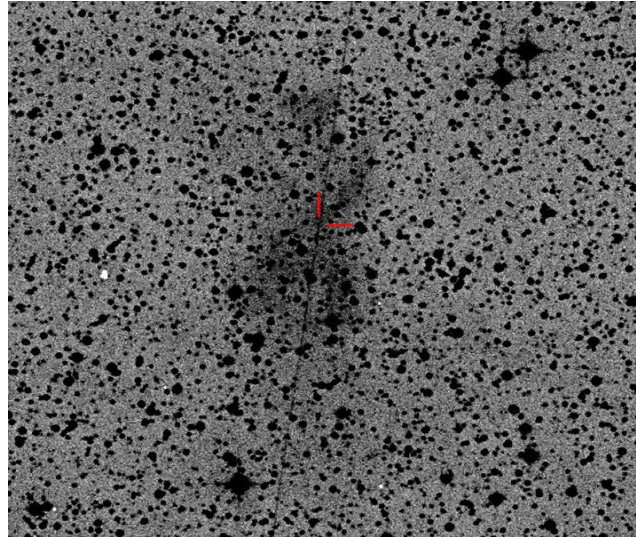
Object	MoMi2
Coordinates (J2000)	21:10:51.12 +40:17:00.07
Type	PN Candidate

Observation date	23.004/06/2020 (d/m/y)
Meteorological conditions	20°C
Observer	L.Mulato
Location	Cornillon France

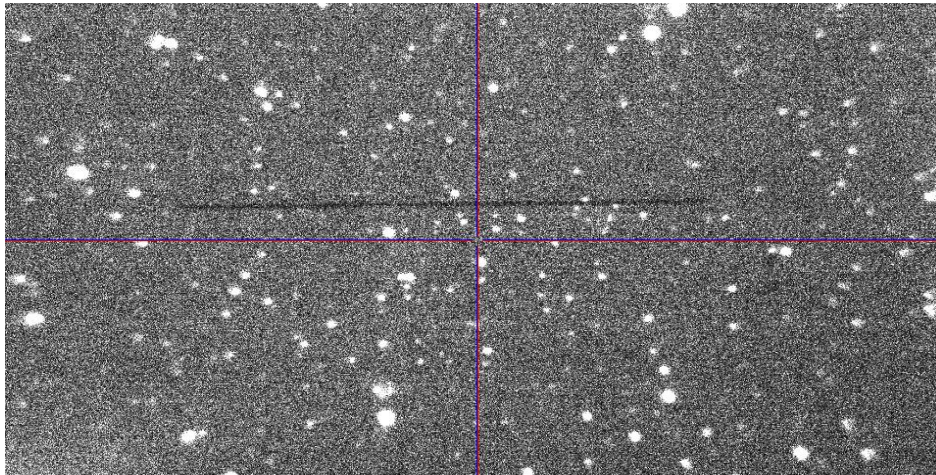
Mount	NEQ6
Telescope	Newton Skywatcher 200 mm F/5
Spectrograph	Alpy 600 - 23 μ m slit
Resolution (bin 1x1)	~ 1 Å at $\lambda 656$ nm
Science camera	ATIK 414 EX
Dispersion (bin 1x1)	$\sim 0,3$ nm/pixel at $\lambda 656$ nm
Cam Temperature	0 °C
Binning	2x2
Guiding camera	ASI290 MM non cooled
Data acquisition Soft	PRISM V10
Data processing Soft	Isis V5.9.3

Exposure on object	3	x	1200	s
Master Dark date	23/06/2020		(d/m/y)	
Dark Exposure	18	x	1200	s
Dark Temperature	0		°C	
Master Offset date	22/05/2020		(d/m/y)	
Master Flat date	20/06/2020		(d/m/y)	
Neon-Argon calib. date	21/06/2020		(d/m/y)	
Reference star calib.	HD195050			
Exposure on ref star	13	x	20	s
Ref Star Sp. date	23.033/06/2020			

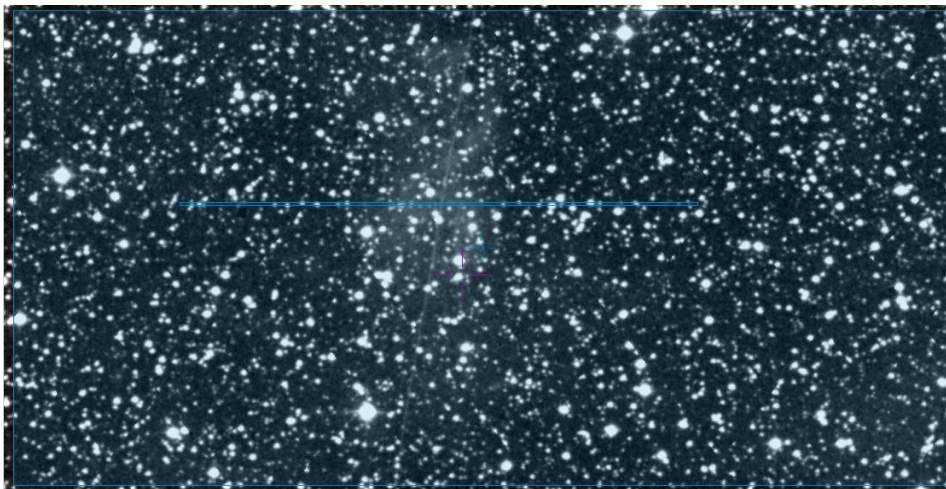
Image Ha
© IPHAS



Autoguider



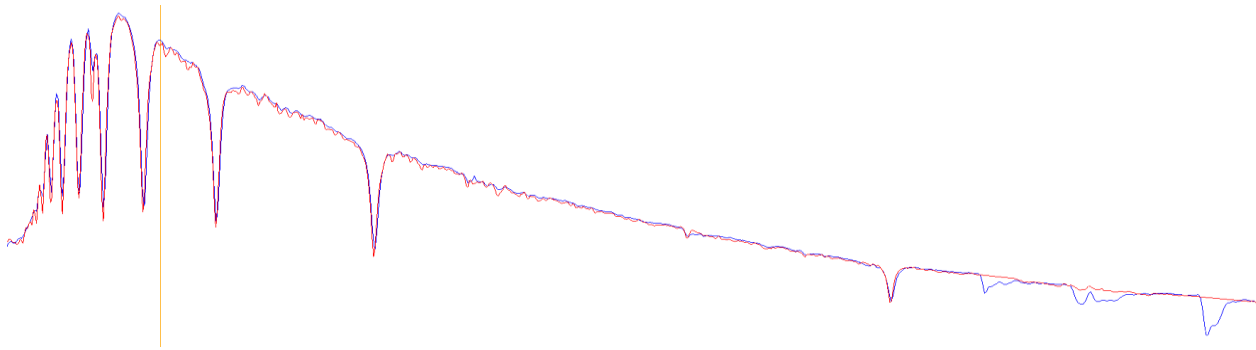
Slit position
IPHAS



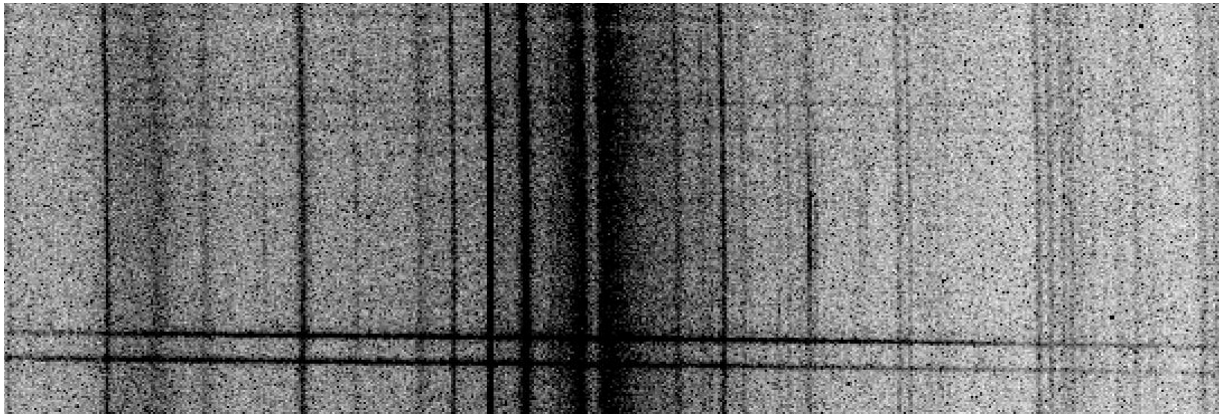


Instrumental Response and 2D Spectrum

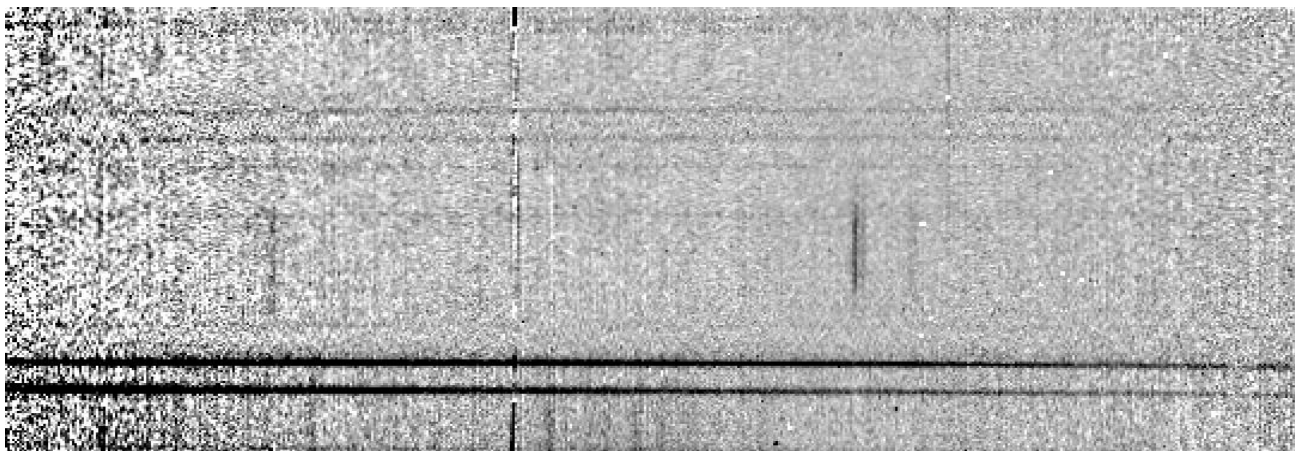
Instrumental response (red = theoretical ref star spectrum ; blue = acquired ref star spectrum with instrumental response correction applied)



2D Raw spectrum

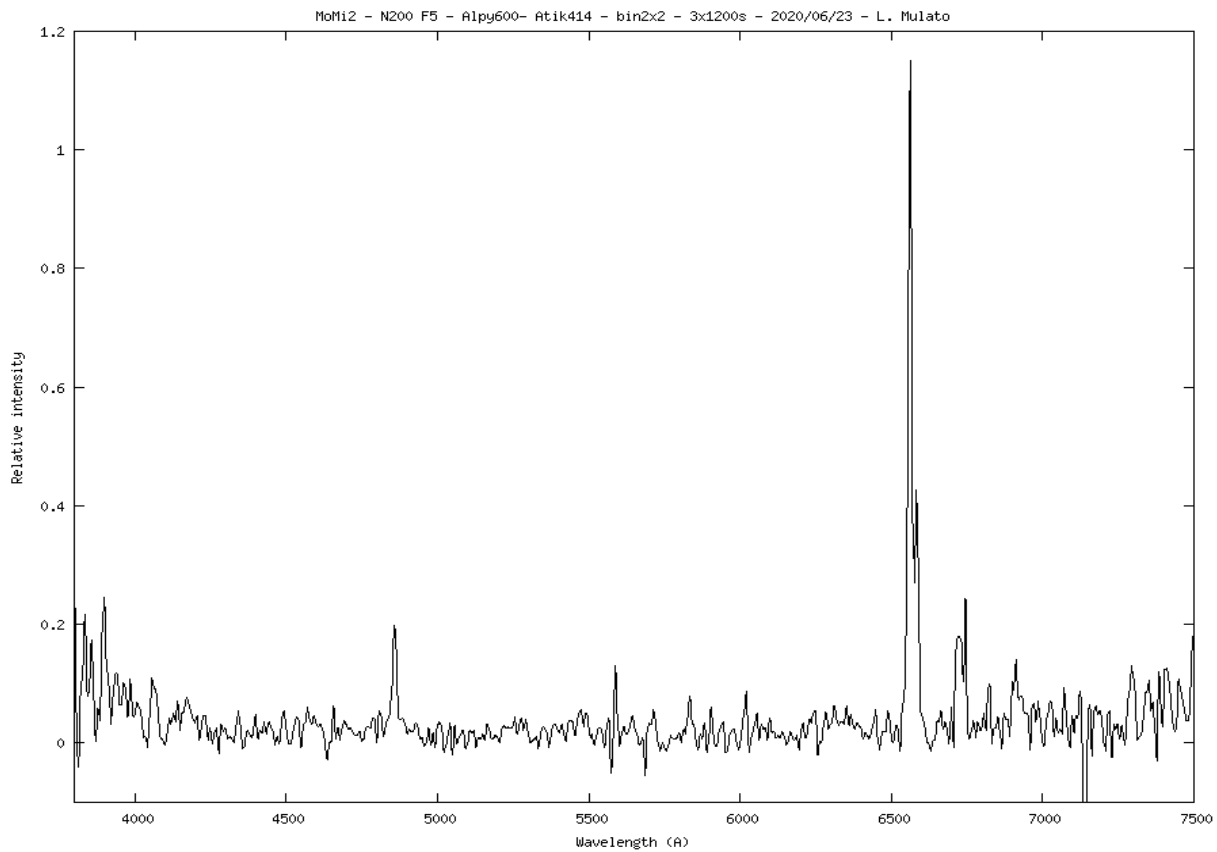


Processed 2D spectrum





Results



Comments :

Detected lines : H α >> [N II], H β no [O III], weak [S II].

MoMi 2 is an HII Region

