



Spectroscopic Record Sheet



Details on acquisitions

Object	Br 6
Coordinates (J2000)	21:08:31.30 +46:28:49.70
Type	/

Observation date	9.931/08/2023
Weather conditions	/
Observer	2SPOT
Location	OHP (FR)

Mount	Takahashi EM200
Telescope	TS APO 80
Spectroscope	StarEx 300 (19um slit)
Resolution (bin 1x1)	~1nm at 656 nm
Principal camera	ASI 533MM Pro
Dispersion (bin 1x1)	~0,3 nm/pixel at 656 nm
Cam temperature	-10°C
Binning	2x2
Guiding camera	
Data acquisition Soft	Prism v11.2.3.21
Data processing soft	ISIS V6.1.1

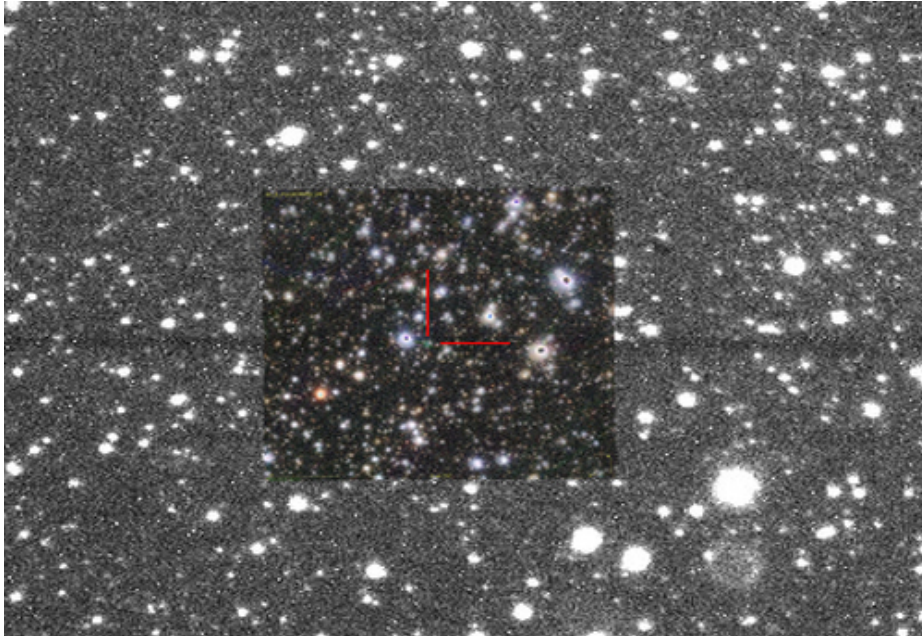
Exposure on object	6 x 1200 s
Master Dark	Corrected
Master Flat	Corrected
Master Offset	Corrected
Neon-Argon calibration	Corrected

Reference star calib.	HD207330_B3III
Exposure on ref star	10 x 30 s
Ref star Sp. date	9.955/08/2023



Slit position and images

Slit position



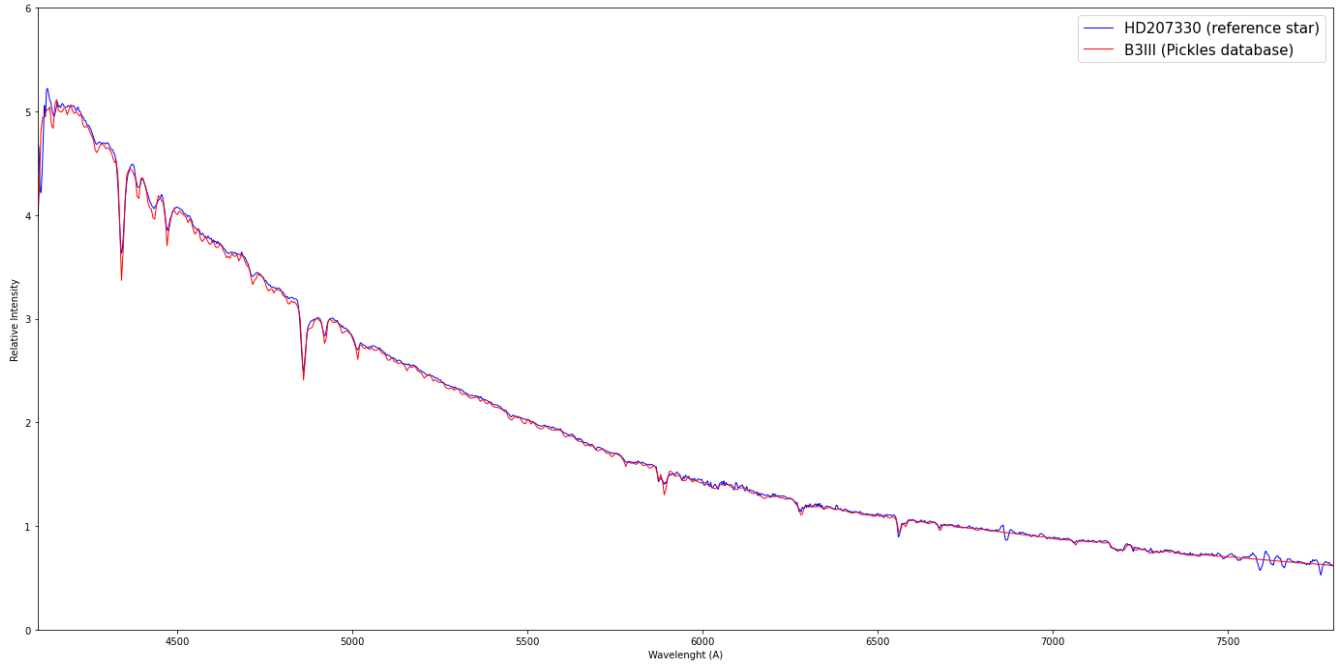
Object picture(s)



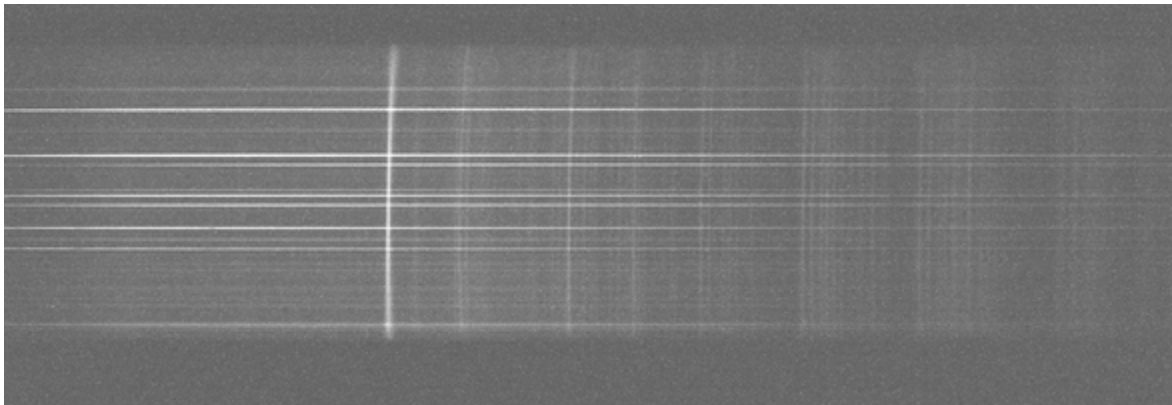


Instrumental Response and 2D Spectra

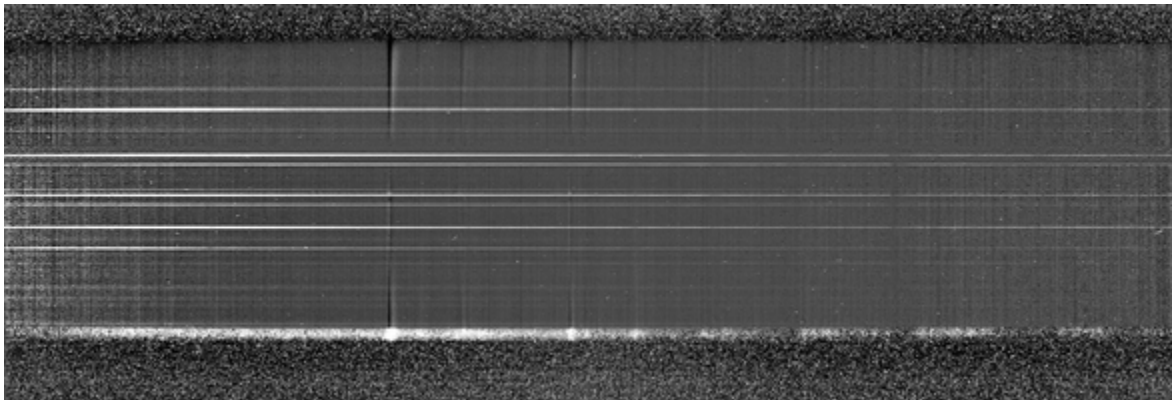
Instrumental response (red = theoretical ref star spectrum ; blue = acquired ref star spectrum with instrumental response correction applied)

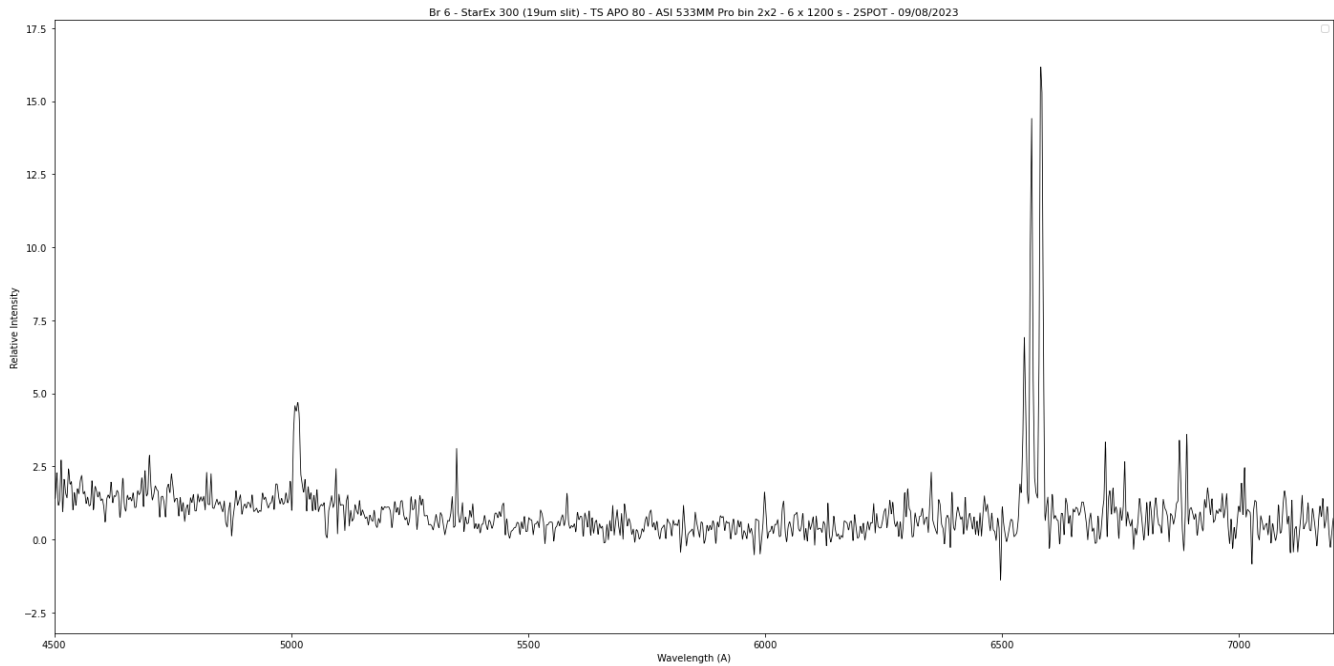


2D Raw spectrum



2D Processed spectrum





Comments

Br6 has strong Ha(6563Å) and [NII](6548Å-6583Å) lines.
It also presents a significant [OIII] line at 5007Å.

Also considering the shape of the object (PanSTARRS for instance),
Br6 might be a True PN.