



Spectroscopic Record Sheet



Details on acquisitions

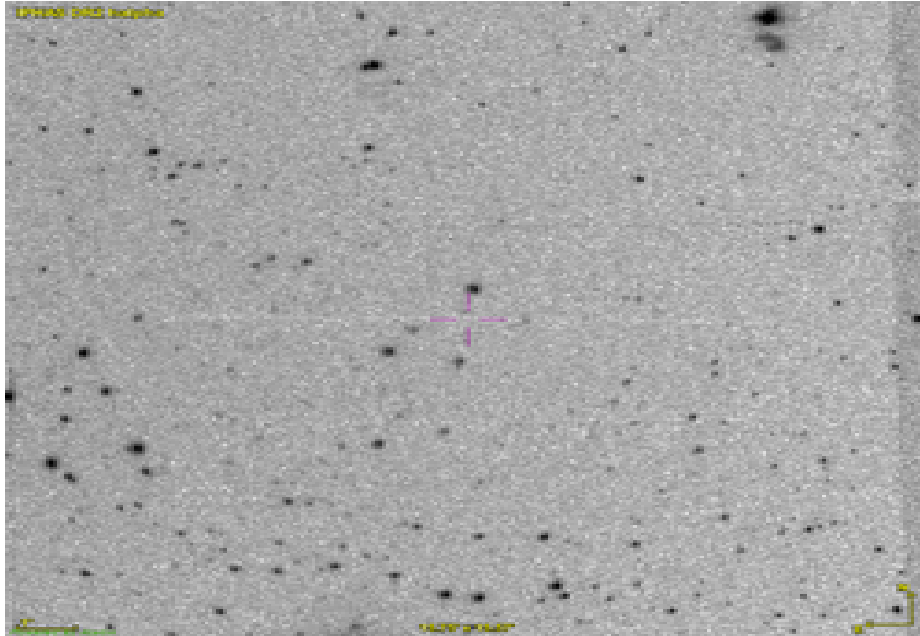
Object	Br 10
Coordinates (J2000)	21:42:43.40 +54:41:56.40
Type	New candidate

Observation date	9.050/10/2023
Weather conditions	Temp:14.8°C Hygro: 72% Patm:1024 hpa
Observer	P. Le Dû
Location	Kermerrien Observatory (Porspoder, FR)

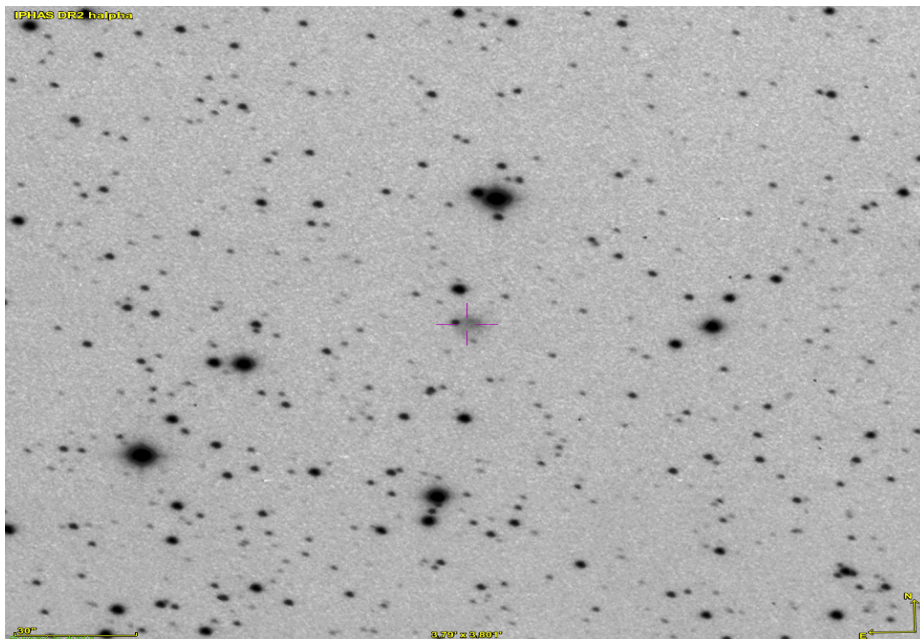
Mount	Losmandy G11
Telescope	Newton 200mm F/5
Spectroscope	Alpy 600 (23um slit)
Resolution (bin 1x1)	~1nm at 656 nm
Principal camera	Atik 414 EX
Dispersion (bin 1x1)	~0,3 nm/pixel at 656 nm
Cam temperature	-10°C
Binning	2x2
Guiding camera	Atik 314L+
Data acquisition Soft	Prism v11.2.3.21
Data processing soft	ISIS V6.1.1

Exposure on object	11 x 1200 s
Master Dark	Corrected
Master Flat	Corrected
Master Offset	Corrected
Neon-Argon calibration	Corrected
Reference star calib.	HD222304_B9V
Exposure on ref star	14 x 6 s
Ref star Sp. date	9.148/10/2023

Slit position



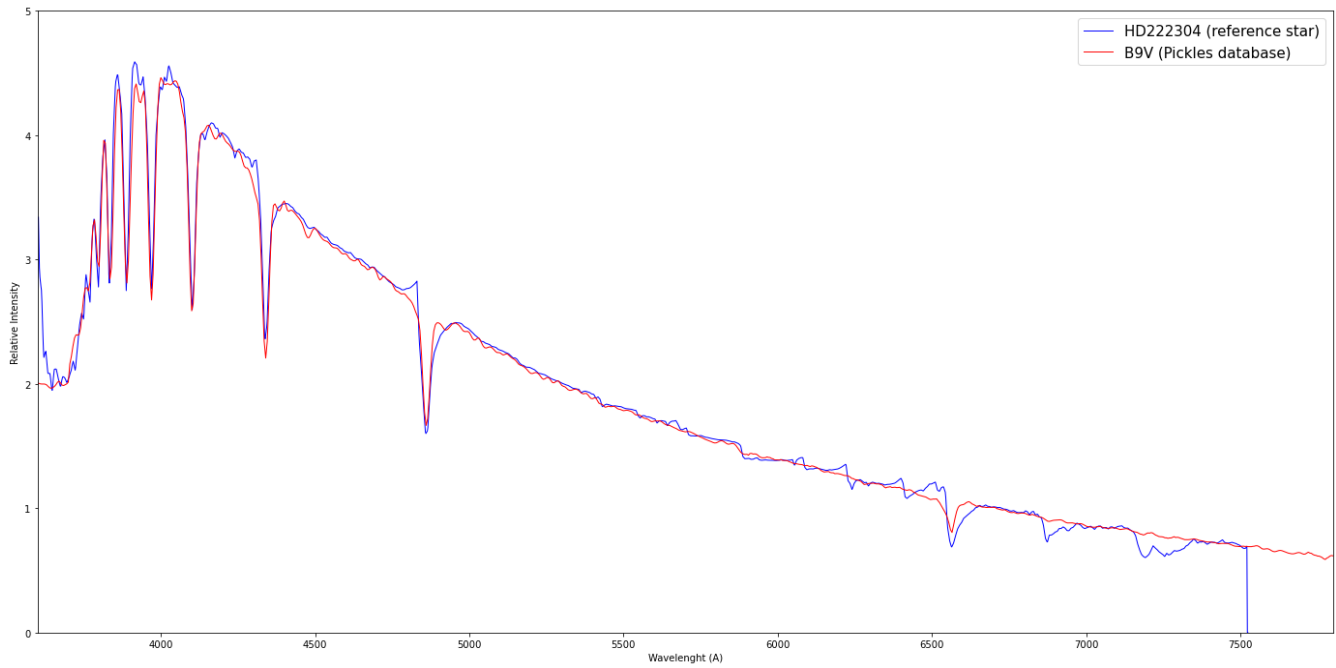
Object picture(s)





Instrumental Response and 2D Spectra

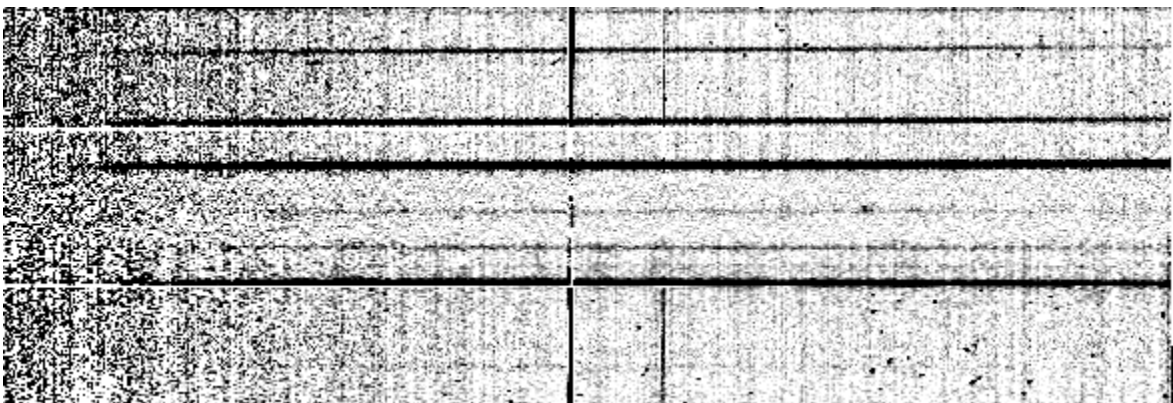
Instrumental response (red = theoretical ref star spectrum ; blue = acquired ref star spectrum with instrumental response correction applied)

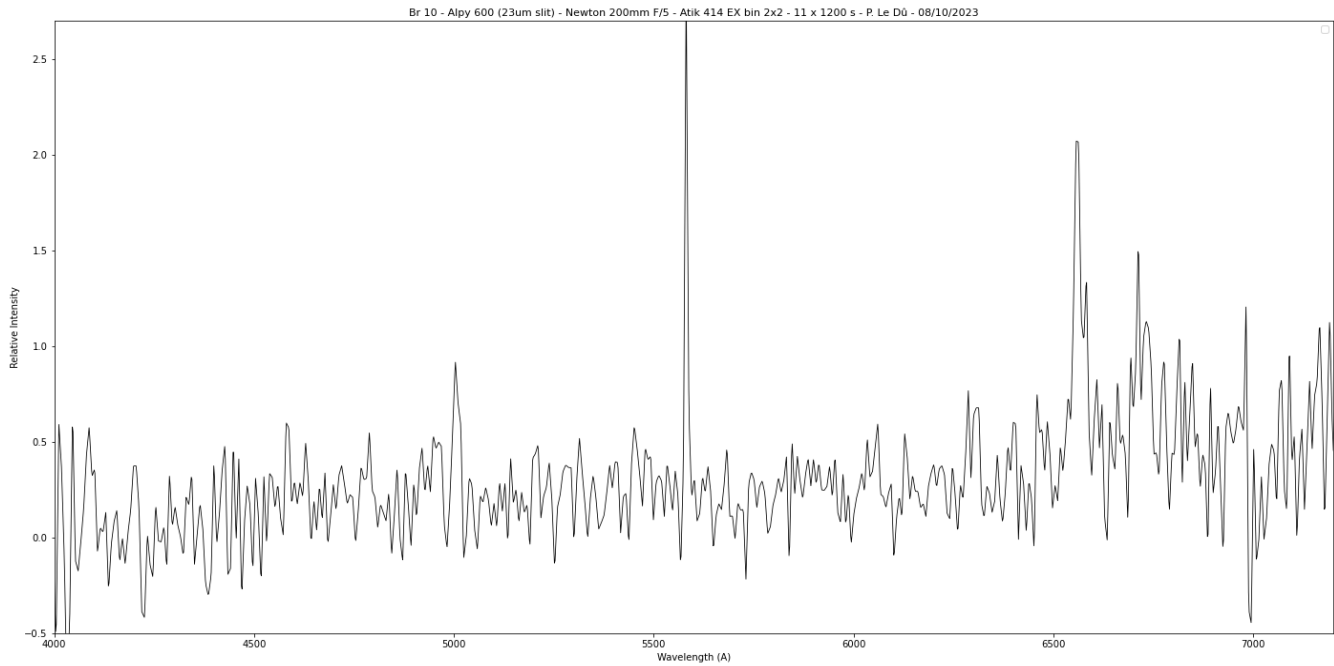


2D Raw spectrum



2D Processed spectrum





Comments

[OIII](5007A), Halpha, [NII](6583A), [SII](6716A) lines detected.

The signal from the emission lines is very discrete on the 2D spectra (punctual) but is well confirmed.