



# Spectroscopic Record Sheet



## Details on acquisitions

Object	BrRe 1
Coordinates (J2000)	06:47:17.63    +00:50:54.91
Type	/

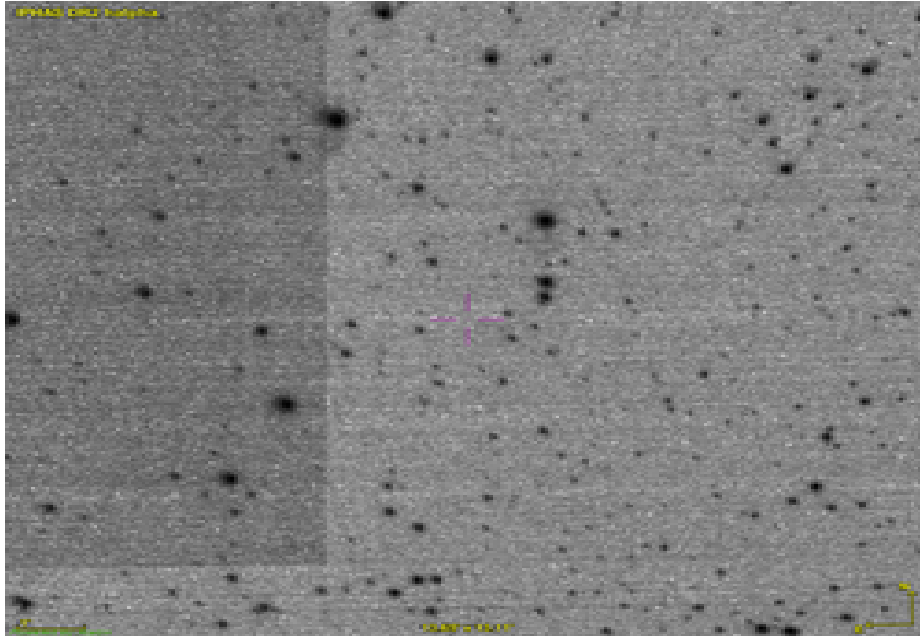
Observation date	7.226/12/2023
Weather conditions	/
Observer	2SPOT
Location	Deep Sky Chile (CL)

Mount	10 Micron GM3000 HPS
Telescope	Ritchey-Chrétien RC12
Spectroscope	Alpy 600 (23um slit)
Resolution (bin 1x1)	~1nm at 656 nm
Principal camera	Atik 414 EX
Dispersion (bin 1x1)	~0,3 nm/pixel at 656 nm
Cam temperature	-10°C
Binning	2x2
Guiding camera	Atik 314L+
Data acquisition Soft	Prism v11.2.3.21
Data processing soft	ISIS V6.1.1

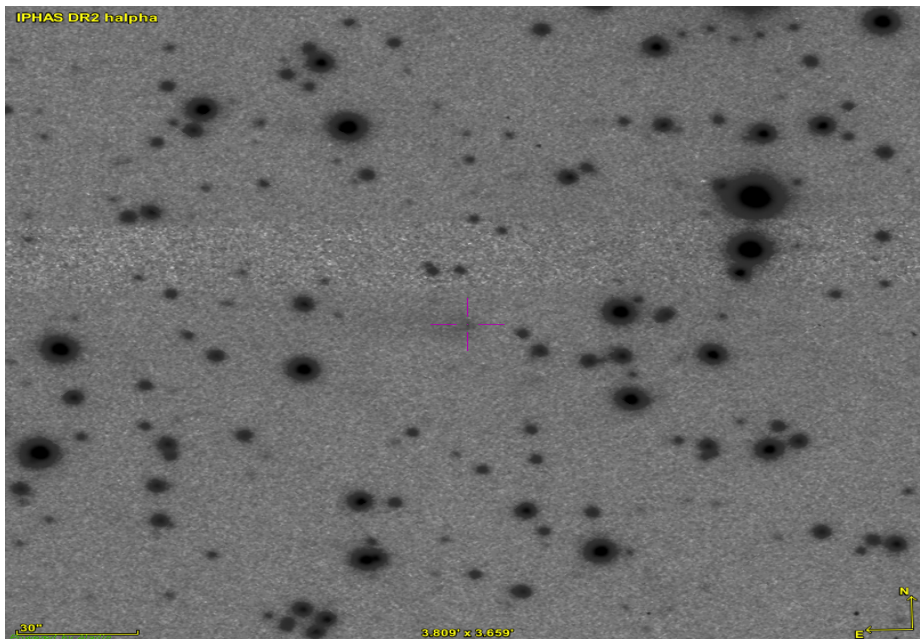
Exposure on object	6 x 1200 s
Master Dark	Corrected
Master Flat	Corrected
Master Offset	Corrected
Neon-Argon calibration	Corrected

Reference star calib.	HD61887_A0V
Exposure on ref star	14 x 4 s
Ref star Sp. date	7.292/12/2023

## Slit position



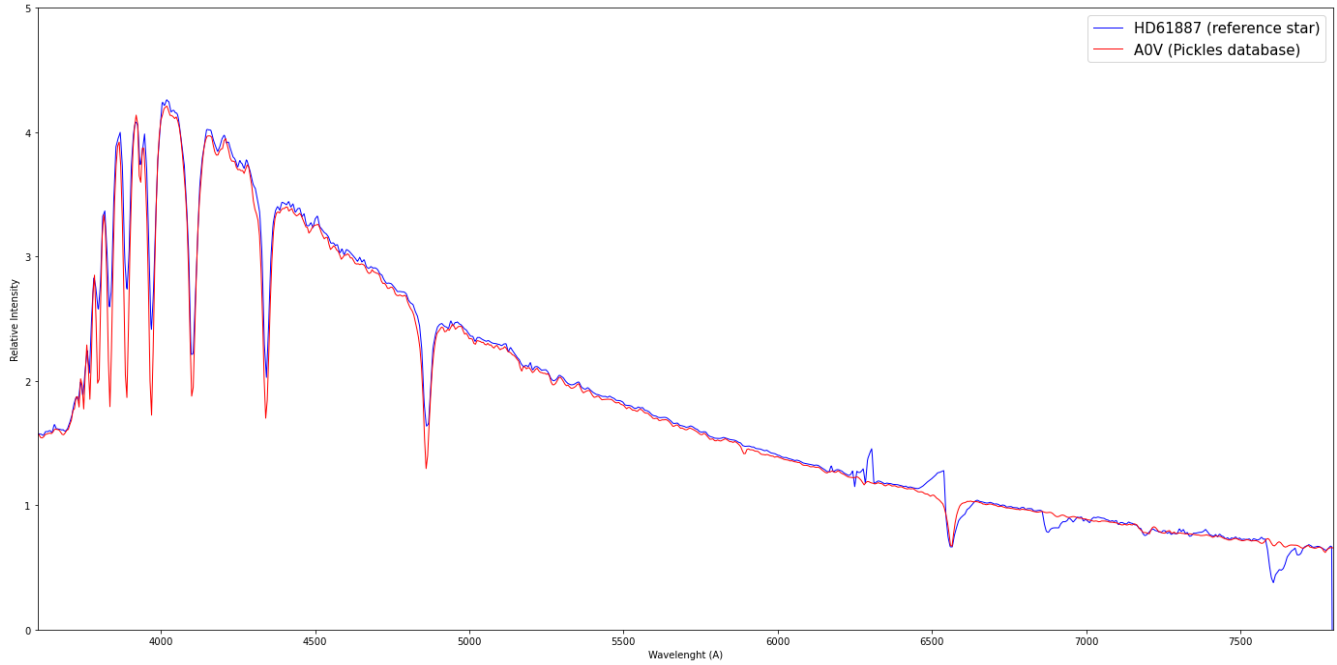
## Object picture(s)



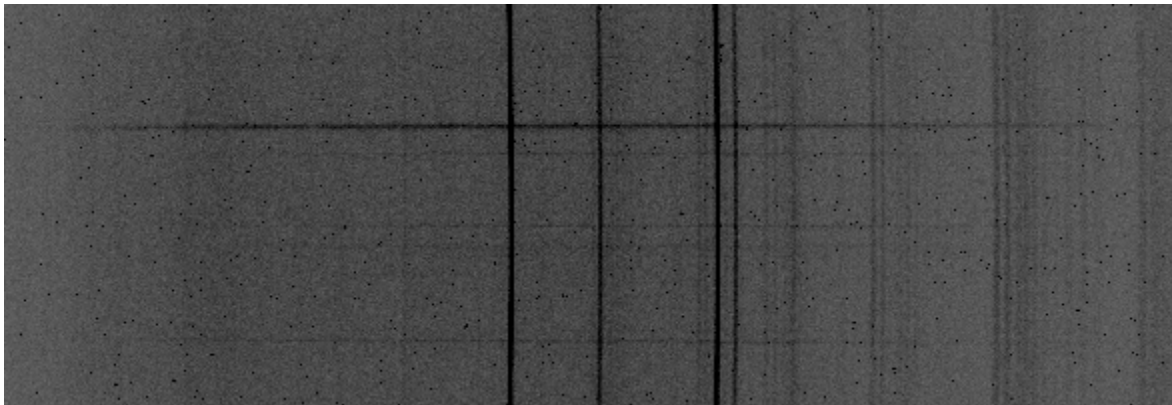


# Instrumental Response and 2D Spectra

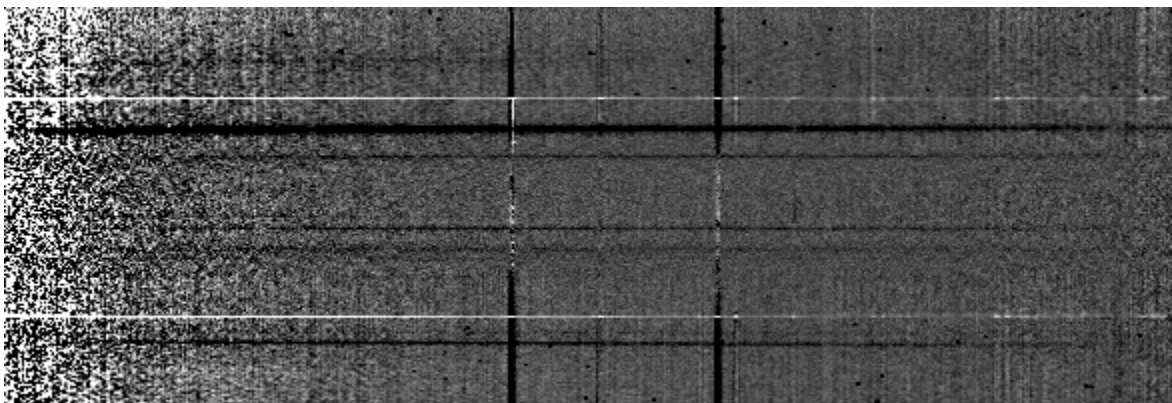
Instrumental response (red = theoretical ref star spectrum ; blue = acquired ref star spectrum with instrumental response correction applied)

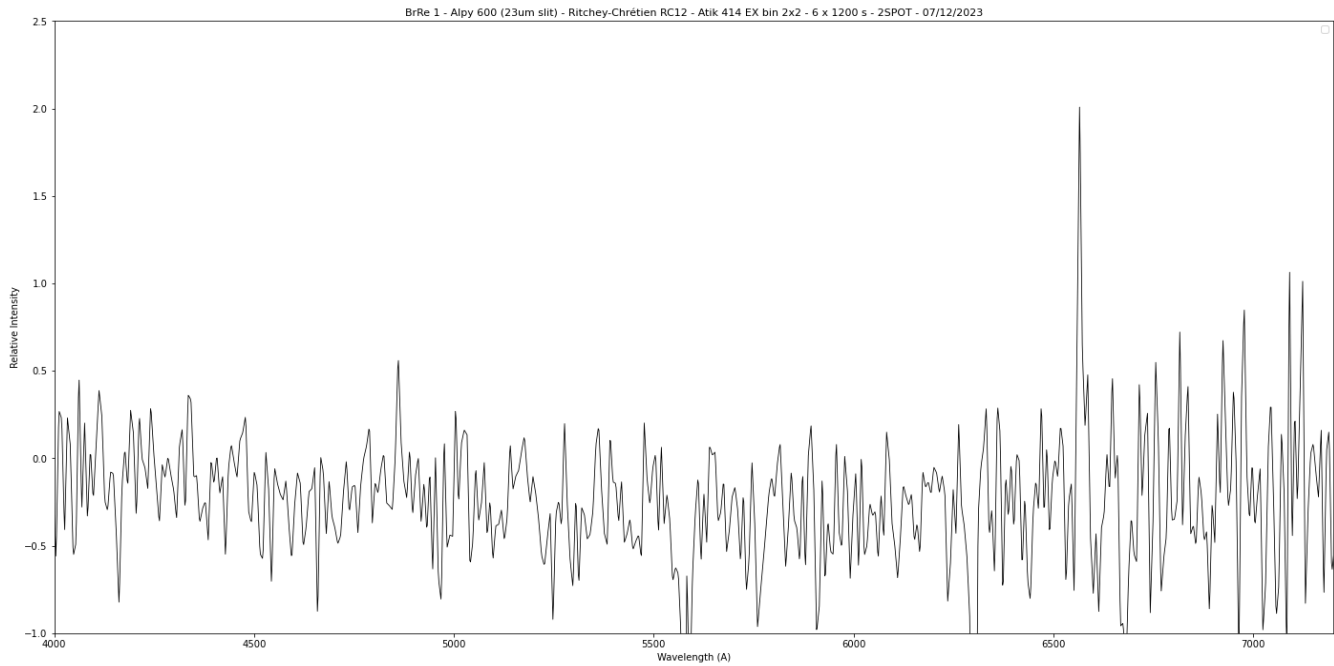


## 2D Raw spectrum



## 2D Processed spectrum





## Comments

Hbeta and Halpha lines detected.  
BrRe 1 is certainly a HII region