



Spectroscopic Record Sheet



Details on acquisitions

| | |
|---------------------|--------------------------|
| Object | SADR 1 |
| Coordinates (J2000) | 17:49:23.90 -42:30:30.74 |
| Type | New candidate |

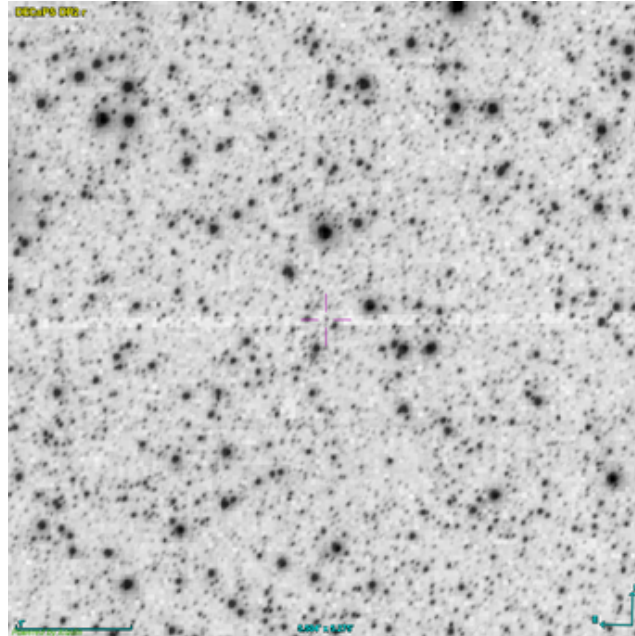
| | |
|--------------------|---------------------|
| Observation date | 22.300/05/2026 |
| Weather conditions | / |
| Observer | 2SPOT |
| Location | Deep Sky Chile (CL) |

| | |
|-----------------------|-------------------------|
| Mount | 10 Micron GM3000 HPS |
| Telescope | Newton 300mm F/4 |
| Spectroscope | Alpy 600 (23um slit) |
| Resolution (bin 1x1) | ~1nm at 656 nm |
| Principal camera | Atik 414 EX |
| Dispersion (bin 1x1) | ~0,3 nm/pixel at 656 nm |
| Cam temperature | -10°C |
| Binning | 2x2 |
| Guiding camera | ASI 178MM |
| Data acquisition Soft | Prism v11 |
| Data processing soft | ISIS V6.1.1 |

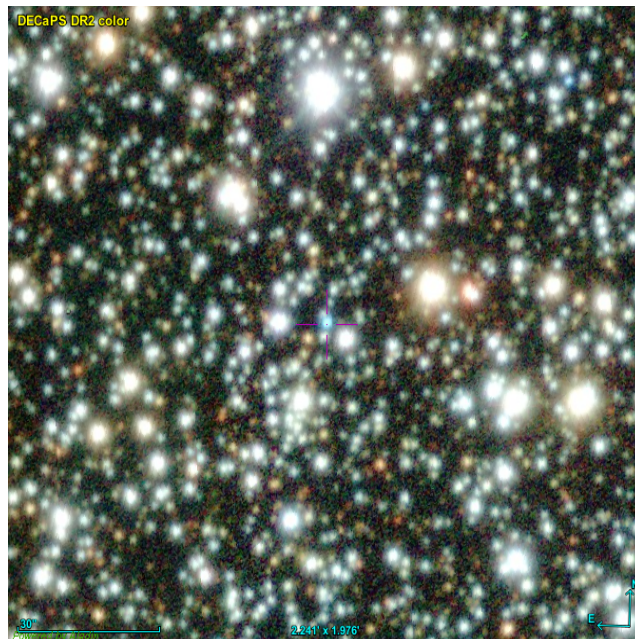
| | |
|------------------------|------------|
| Exposure on object | 4 x 1200 s |
| Master Dark | Corrected |
| Master Flat | Corrected |
| Master Offset | Corrected |
| Neon-Argon calibration | Corrected |

| | |
|-----------------------|----------------|
| Reference star calib. | HD155259_A0V |
| Exposure on ref star | 5 x 16.34343 s |
| Ref star Sp. date | 22.332/05/2026 |

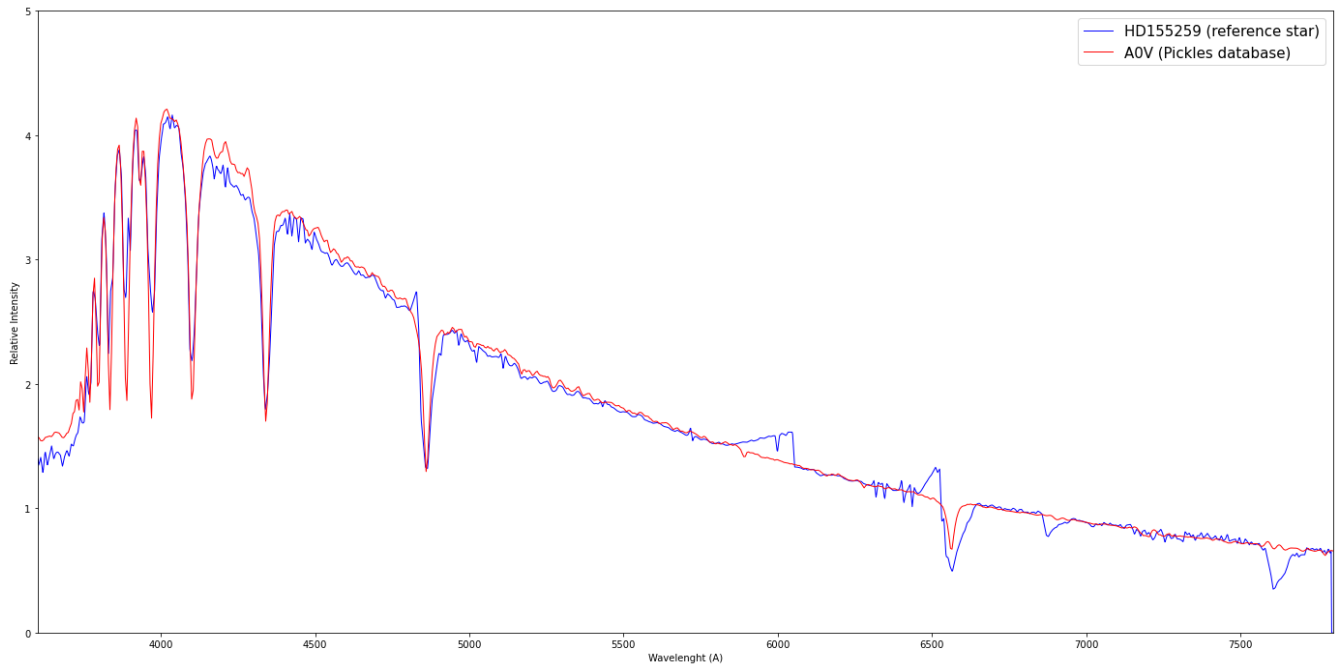
Slit position



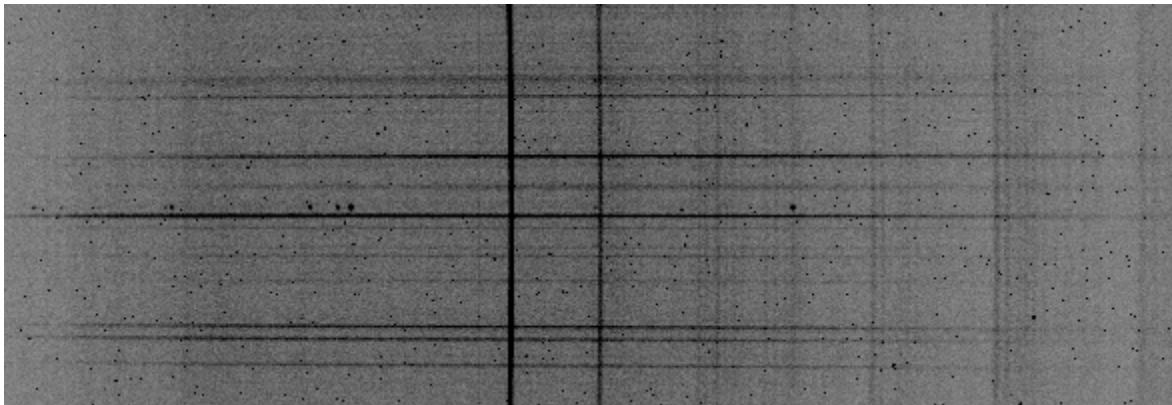
Object picture(s)



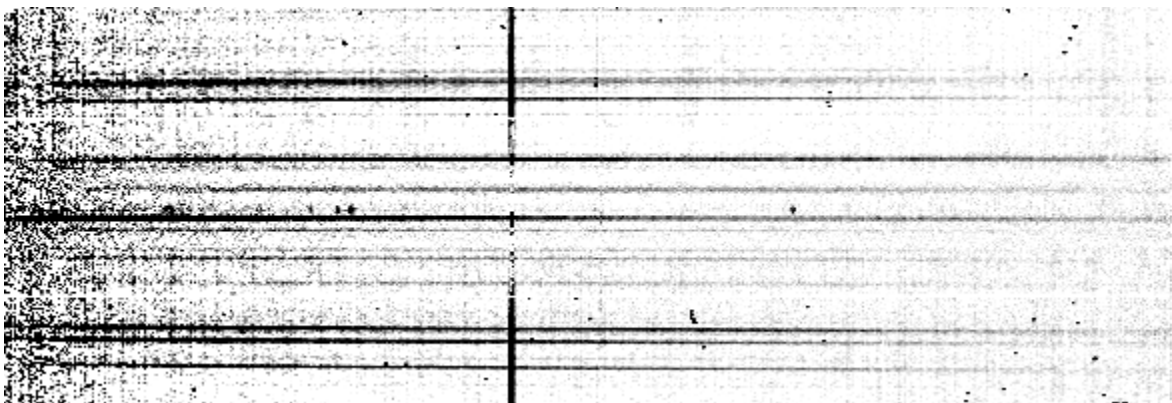
Instrumental response (red = theoretical ref star spectrum ; blue = acquired ref star spectrum with instrumental response correction applied)



2D Raw spectrum

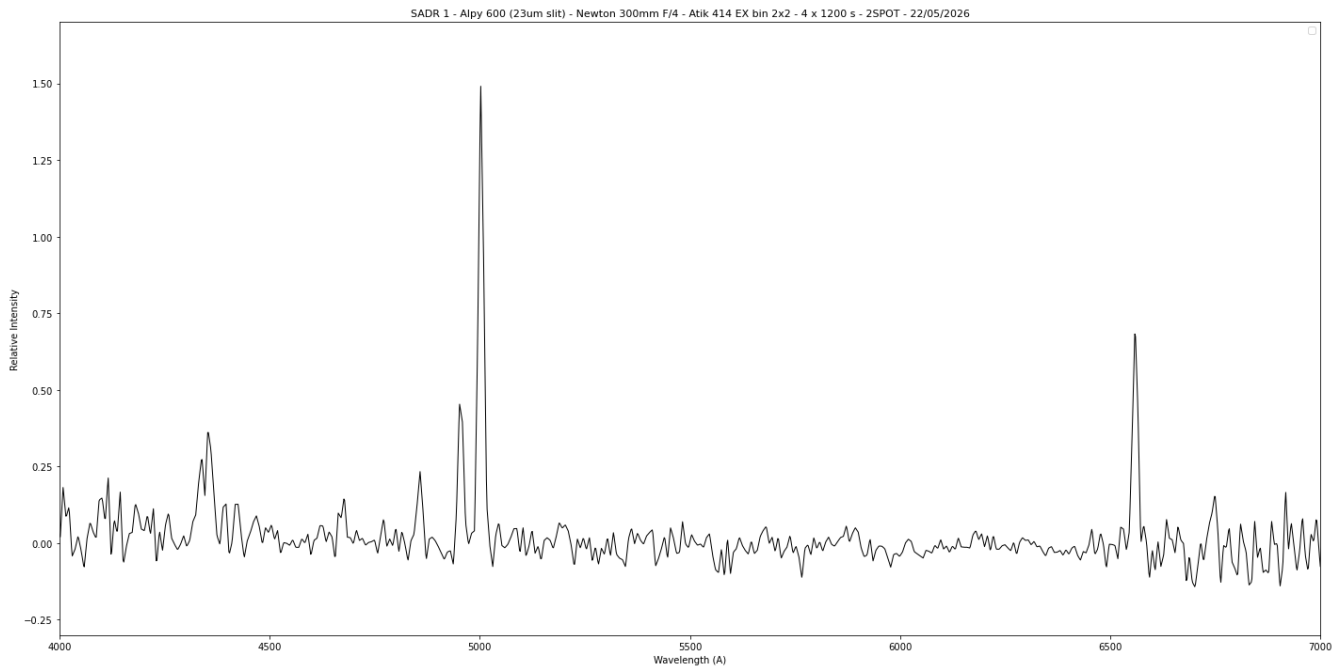


2D Processed spectrum





Results



Comments

Hgamma, [OIII](4363A), HeII(4686A), Hbeta, [OIII] and Halpha lines detected.
SADR 1 could be a symbiotic star.