



# Spectroscopic Record Sheet



## Details on acquisitions

Object	Pa J1713.5-3132
Coordinates (J2000)	17:13:35.17 -31:32:22.20
Type	Likely PN

Observation date	24.307/04/2026
Weather conditions	/
Observer	2SPOT
Location	Deep Sky Chile (CL)

Mount	10 Micron GM3000 HPS
Telescope	Newton 300mm F/4
Spectroscope	Alpy 600 (23um slit)
Resolution (bin 1x1)	~1nm at 656 nm
Principal camera	Atik 414 EX
Dispersion (bin 1x1)	~0,3 nm/pixel at 656 nm
Cam temperature	-10°C
Binning	2x2
Guiding camera	ASI 178MM
Data acquisition Soft	Prism v11
Data processing soft	ISIS V6.1.1

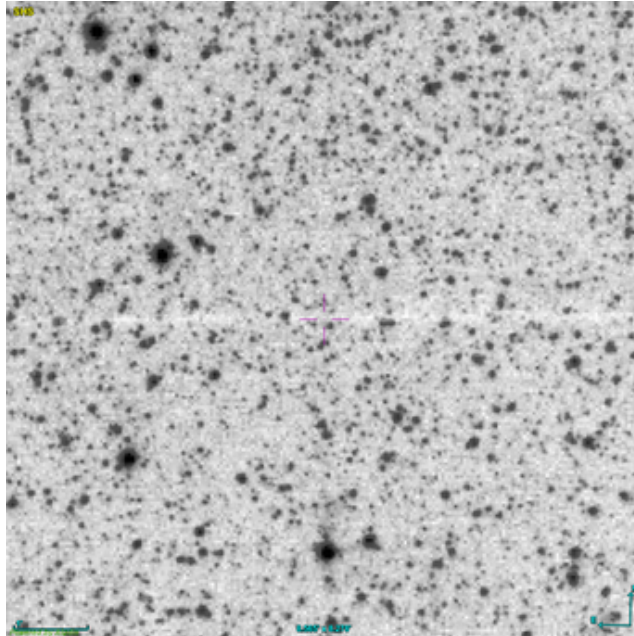
Exposure on object	8 x 1200 s
Master Dark	Corrected
Master Flat	Corrected
Master Offset	Corrected
Neon-Argon calibration	Corrected

Reference star calib.	HD162374_B6IV
Exposure on ref star	5 x 18.44888 s
Ref star Sp. date	24.384/04/2026

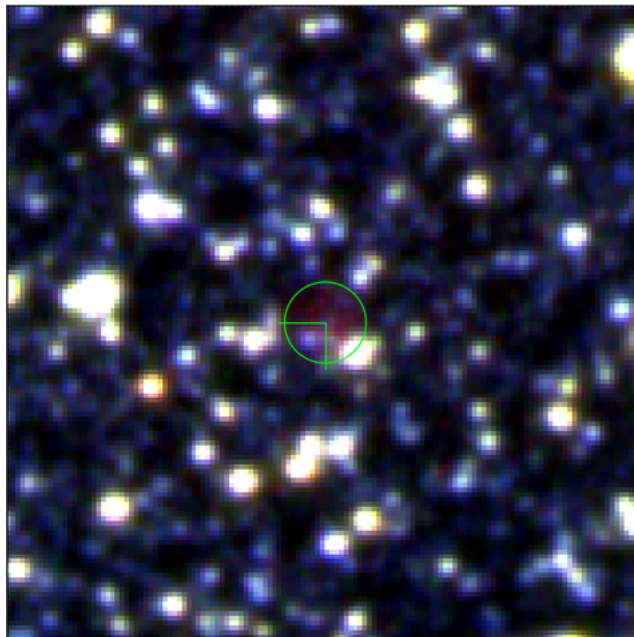


## Slit position and images

Slit position



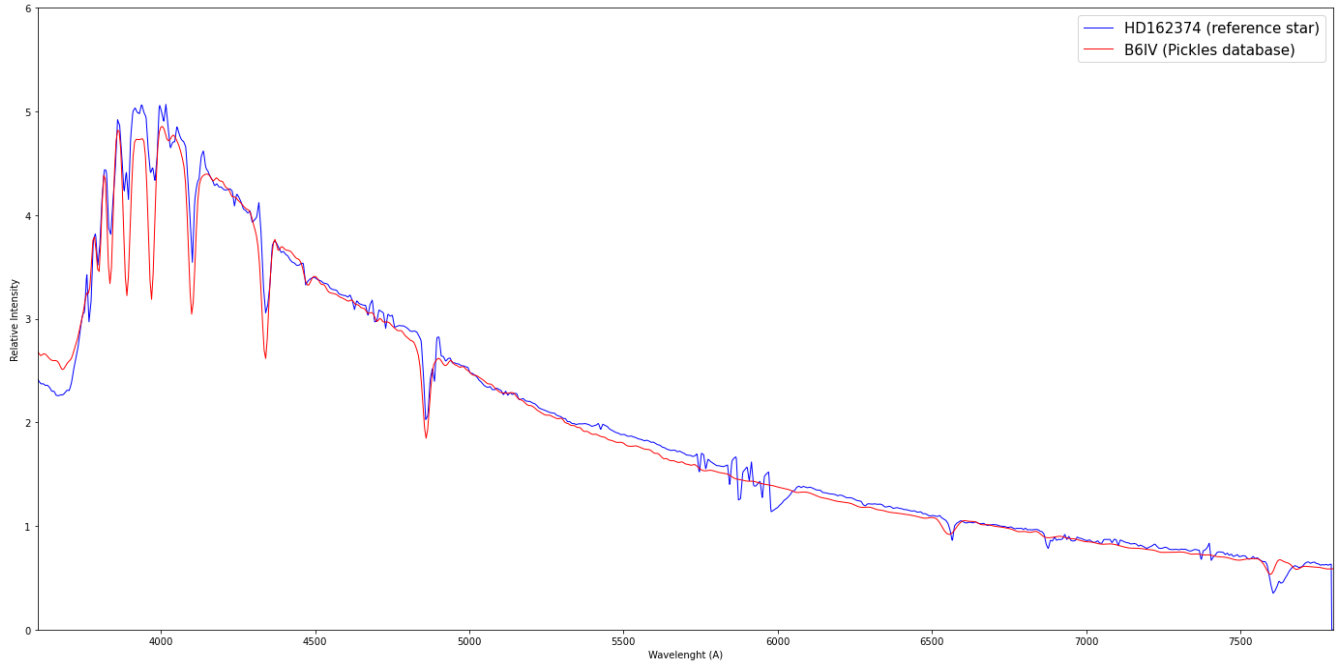
Object picture(s)



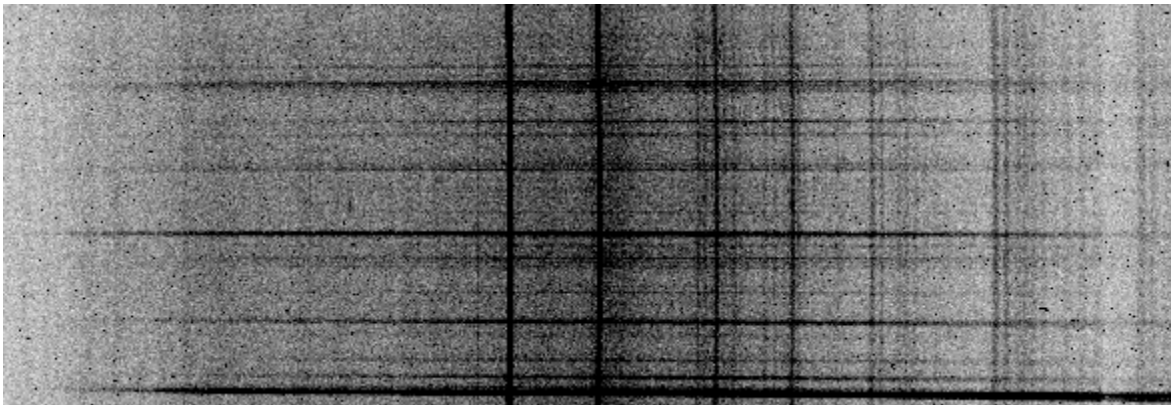


# Instrumental Response and 2D Spectra

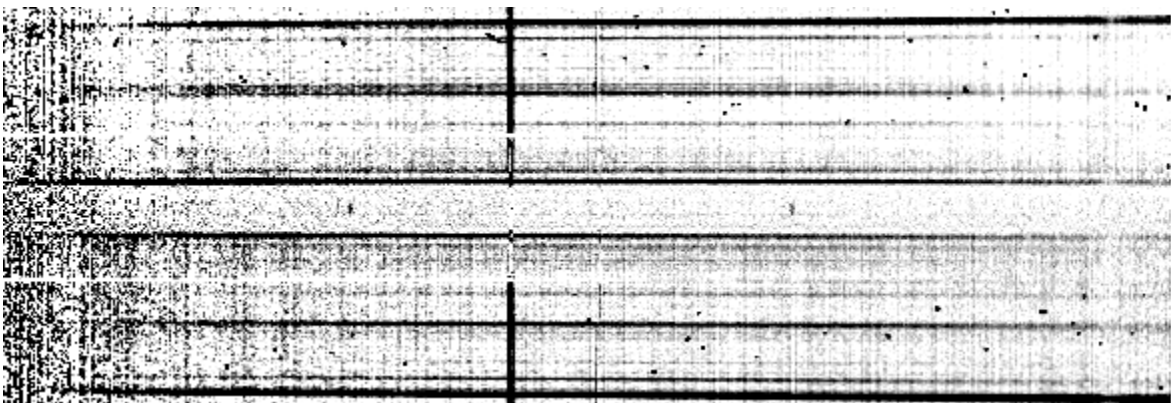
Instrumental response (red = theoretical ref star spectrum ; blue = acquired ref star spectrum with instrumental response correction applied)

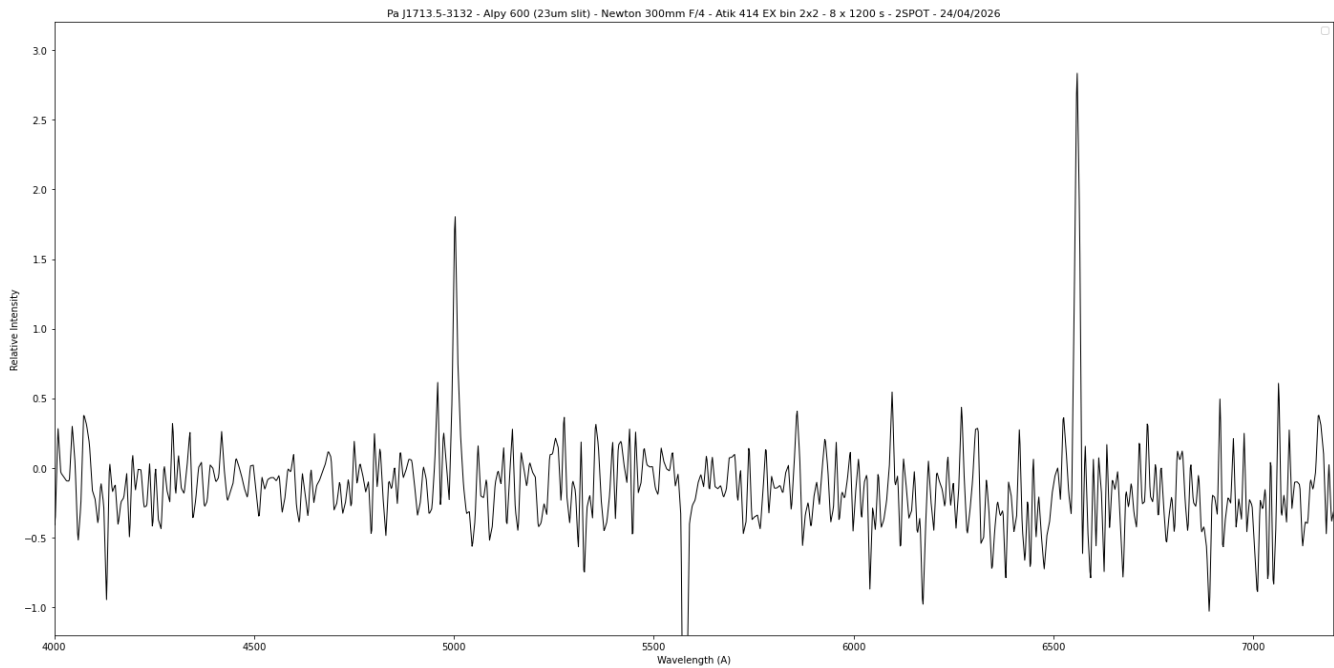


## 2D Raw spectrum



## 2D Processed spectrum





## Comments

Object already classified as Likely PN.  
 HeII(4686A)?, [OIII] and Halpha lines detected.  
 Pa J1713.5-3132 is certainly a true PN.