



# Spectroscopic Record Sheet



## Details on acquisitions

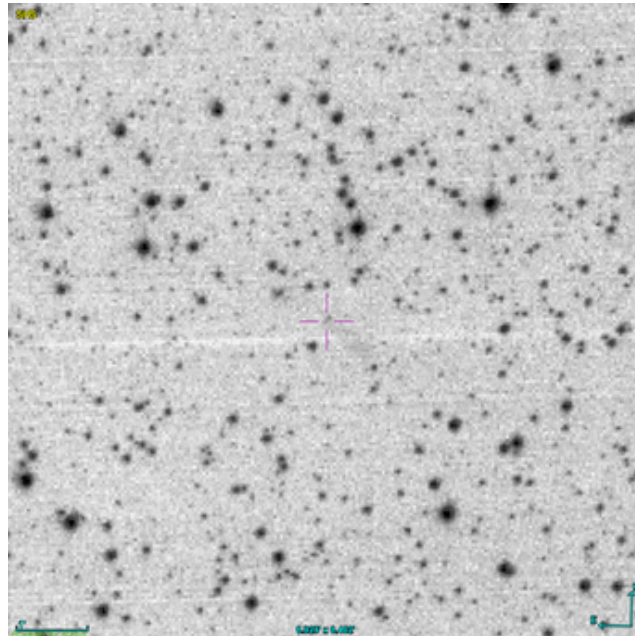
Object	PHR J0816-2410
Coordinates (J2000)	08:16:53.30 -24:10:55.96
Type	Possible PN

Observation date	24.178/01/2026
Weather conditions	/
Observer	2SPOT
Location	Deep Sky Chile (CL)

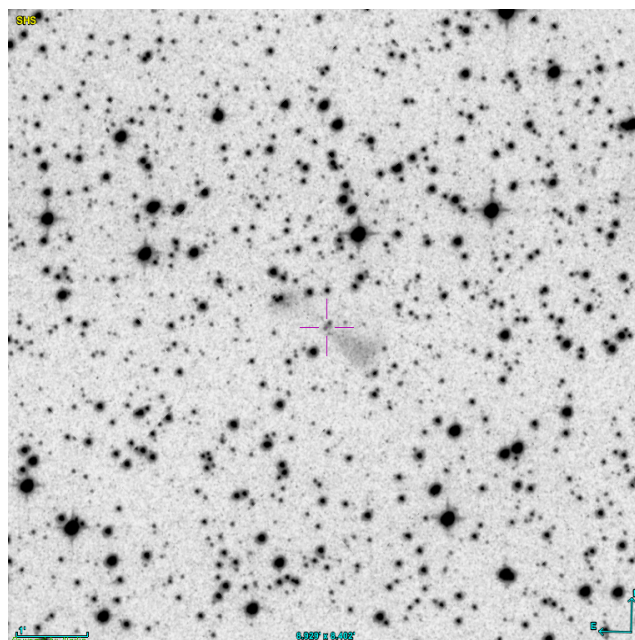
Mount	10 Micron GM3000 HPS
Telescope	Newton 300mm F/4
Spectroscope	Alpy 600 (23um slit)
Resolution (bin 1x1)	~1nm at 656 nm
Principal camera	Atik 414 EX
Dispersion (bin 1x1)	~0,3 nm/pixel at 656 nm
Cam temperature	-10°C
Binning	2x2
Guiding camera	ASI 178MM
Data acquisition Soft	Prism v11
Data processing soft	ISIS V6.1.1

Exposure on object	12 x 1200 s
Master Dark	Corrected
Master Flat	Corrected
Master Offset	Corrected
Neon-Argon calibration	Corrected
Reference star calib.	HD75311_A0V
Exposure on ref star	5 x 2.60427 s
Ref star Sp. date	22.329/01/2026

## Slit position

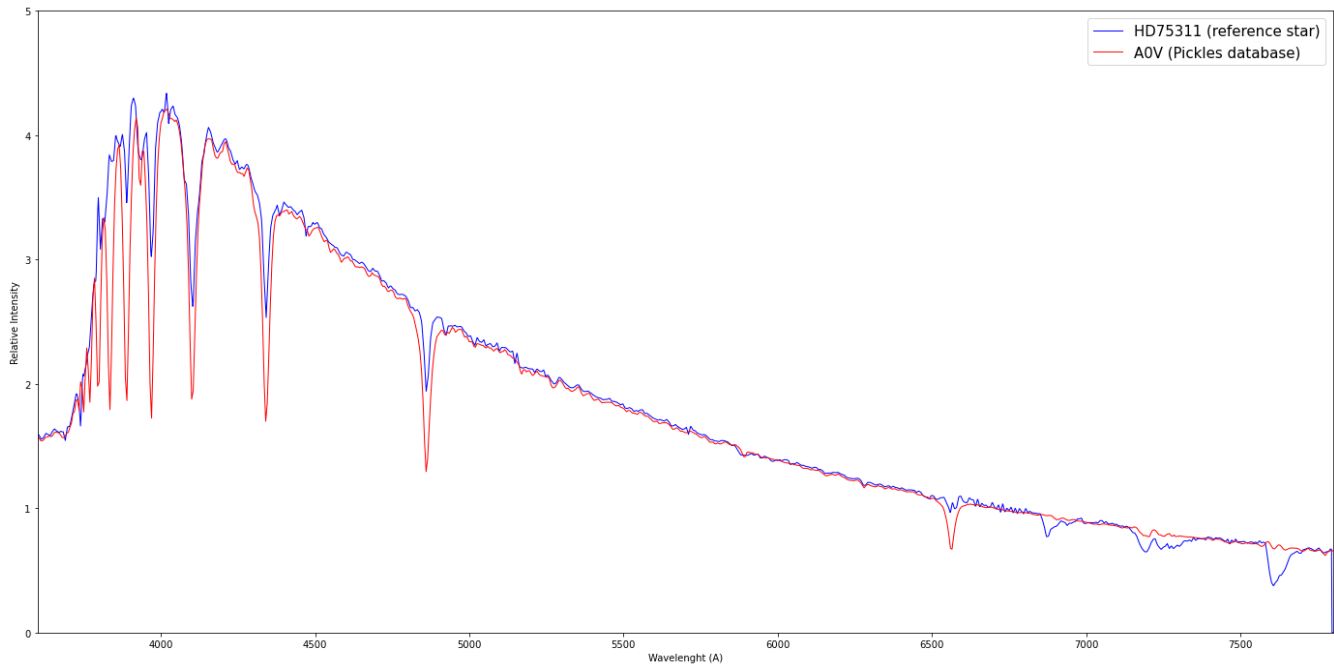


## Object picture(s)

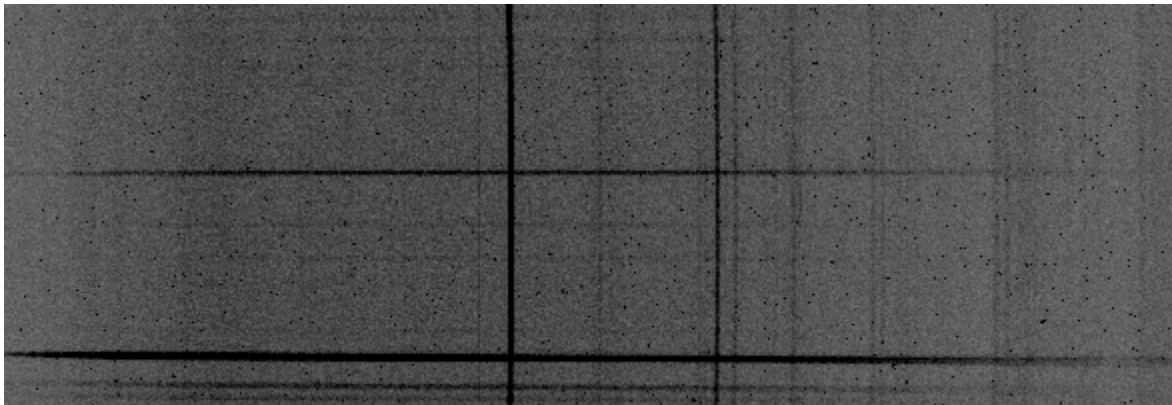


# Instrumental Response and 2D Spectra

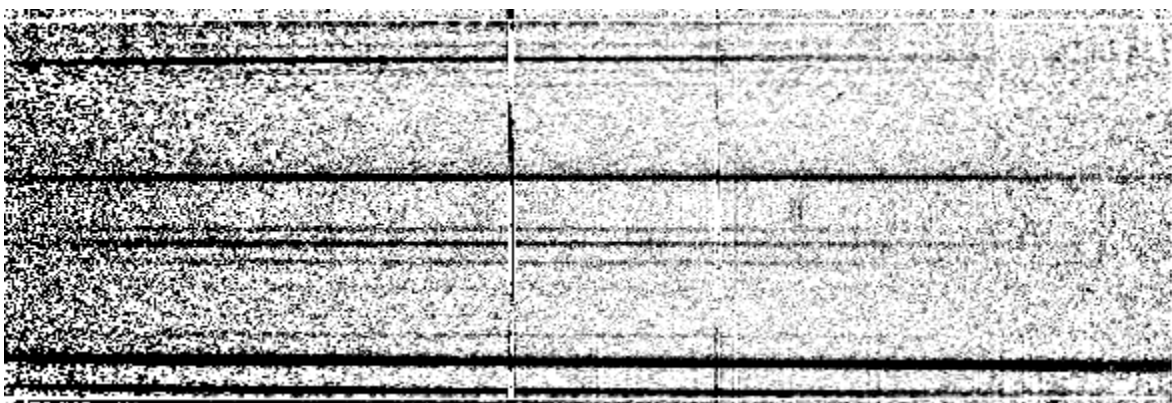
Instrumental response (red = theoretical ref star spectrum ; blue = acquired ref star spectrum with instrumental response correction applied)

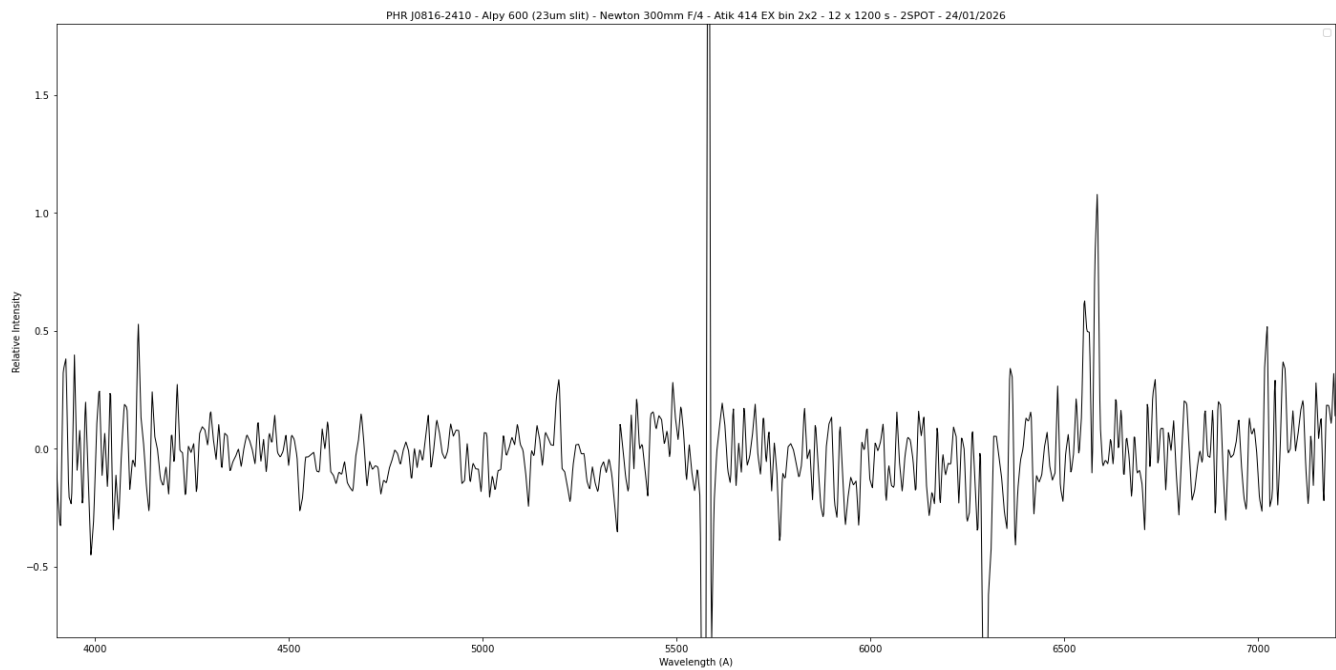


## 2D Raw spectrum



## 2D Processed spectrum





## Comments

Object already classified as Possible PN.

Halpha and strong [NII] lines detected.

No [OIII] line detected .

It is difficult to determine the true nature of PHR J0816-2410.