



# Spectroscopic Record Sheet



## Details on acquisitions

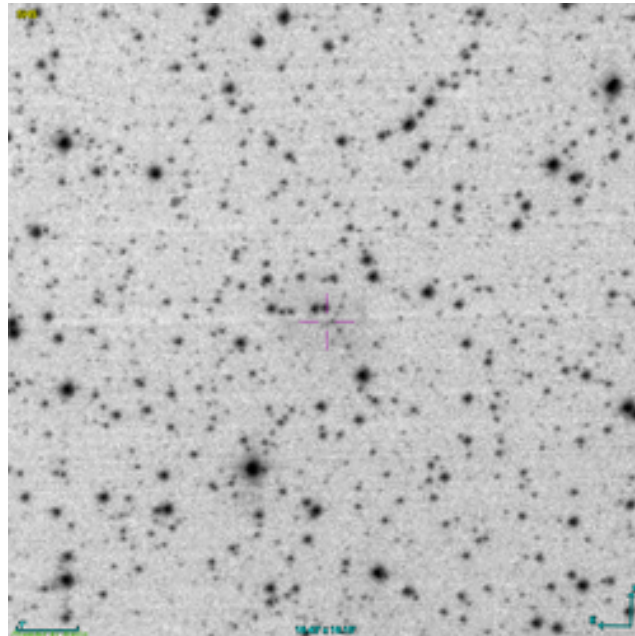
Object	PHR J0722-1434
Coordinates (J2000)	07:22:14.90 -14:34:49.01
Type	Likely PN

Observation date	18.201/12/2025
Weather conditions	/
Observer	2SPOT
Location	Deep Sky Chile (CL)

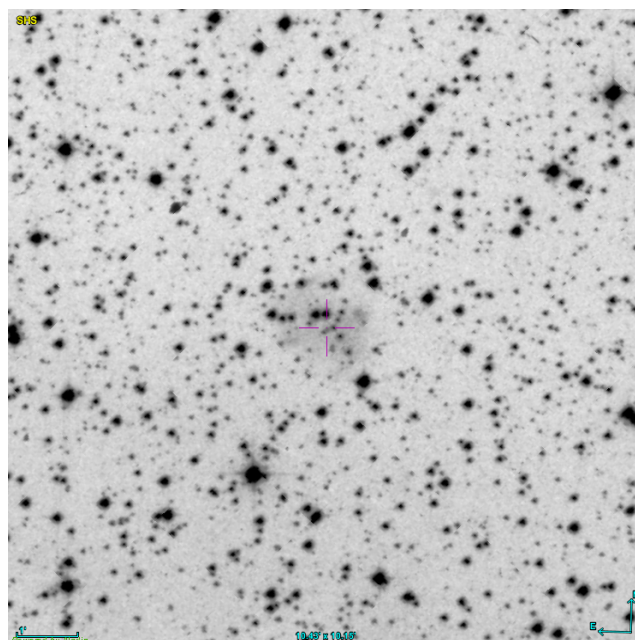
Mount	10 Micron GM3000 HPS
Telescope	Newton 300mm F/4
Spectroscope	Alpy 600 (23um slit)
Resolution (bin 1x1)	~1nm at 656 nm
Principal camera	Atik 414 EX
Dispersion (bin 1x1)	~0,3 nm/pixel at 656 nm
Cam temperature	-10°C
Binning	2x2
Guiding camera	ASI 178MM
Data acquisition Soft	Prism v11.2.3.21
Data processing soft	ISIS V6.1.1

Exposure on object	5 x 1200 s
Master Dark	Corrected
Master Flat	Corrected
Master Offset	Corrected
Neon-Argon calibration	Corrected
Reference star calib.	HD56405_A0V
Exposure on ref star	5 x 5.29011 s
Ref star Sp. date	18.239/12/2025

## Slit position

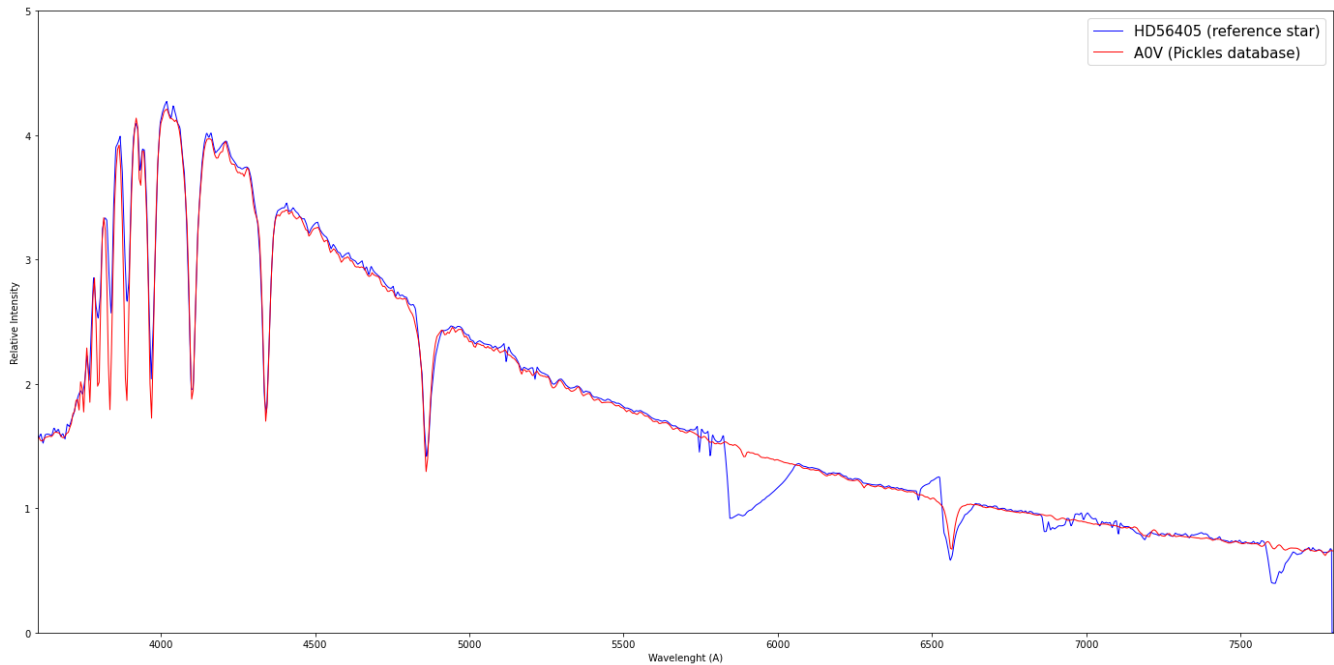


## Object picture(s)

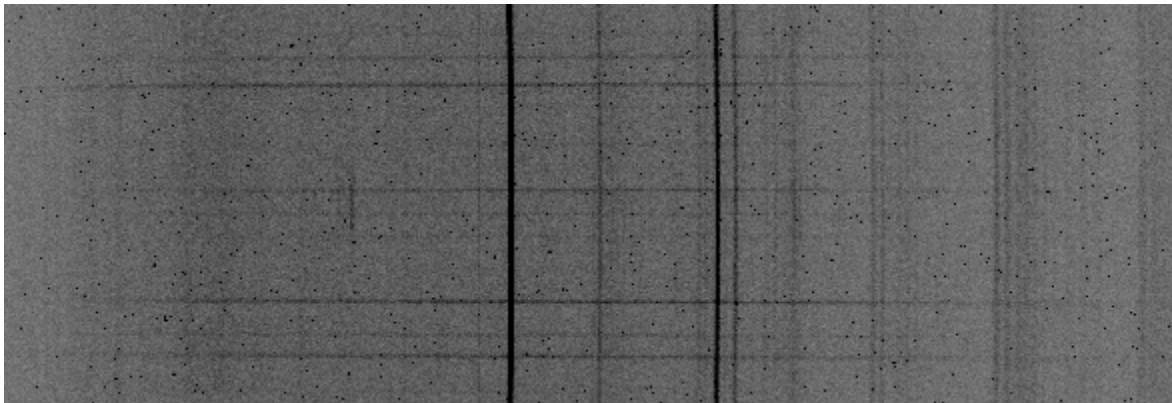


# Instrumental Response and 2D Spectra

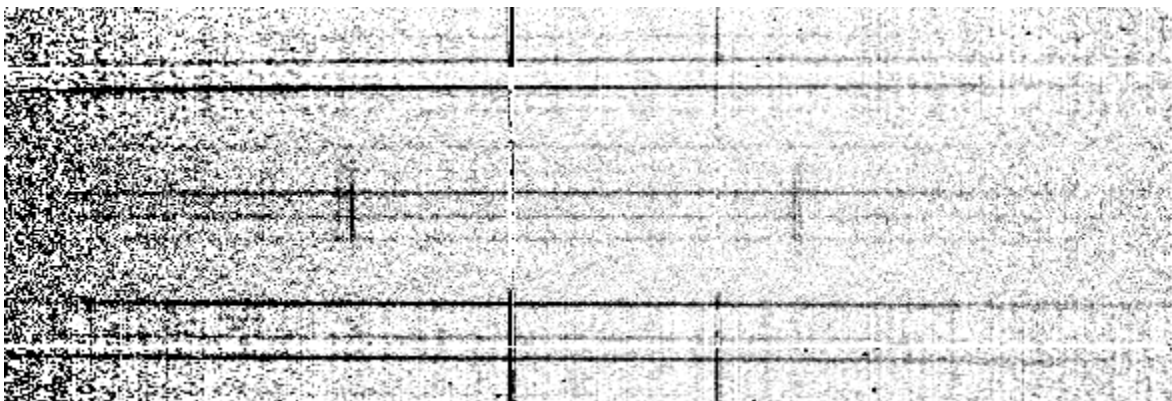
Instrumental response (red = theoretical ref star spectrum ; blue = acquired ref star spectrum with instrumental response correction applied)



## 2D Raw spectrum

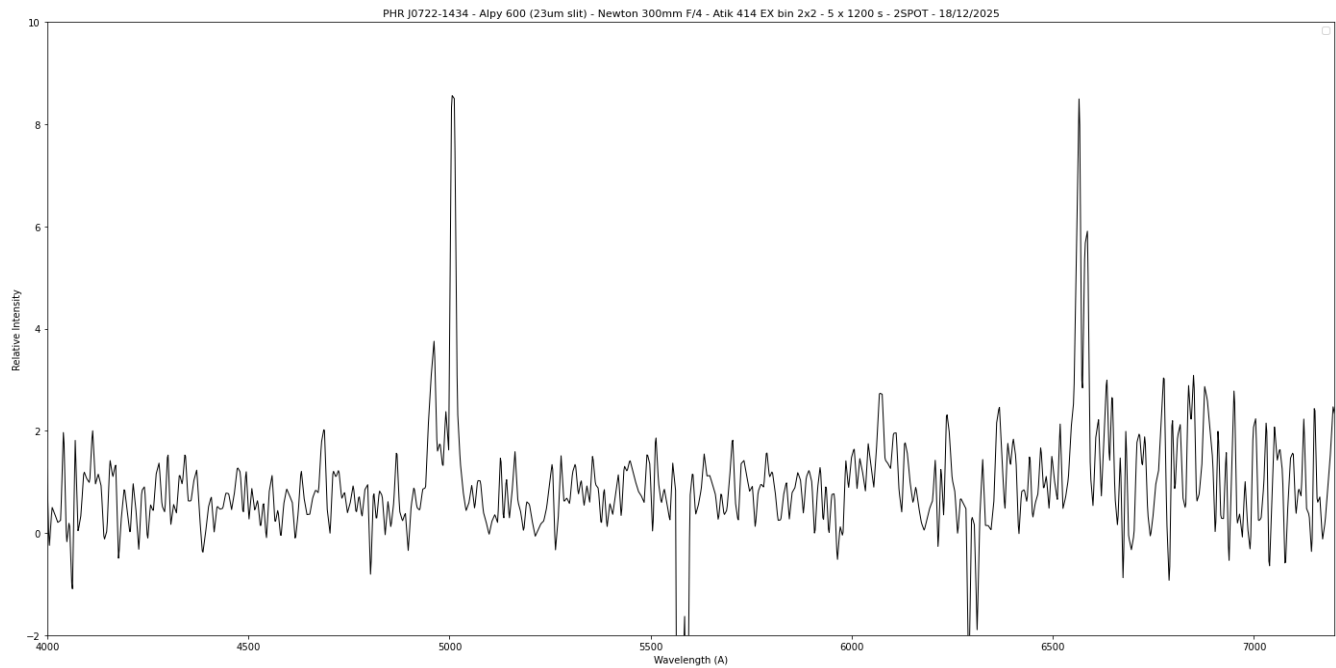


## 2D Processed spectrum





## Results



## Comments

Object already classified as Likely PN.  
HeII(4686A), Hbeta, [OIII], [NII] and Halpha lines detected.  
PHR J0722-1434 is certainly a true PN.