



Spectroscopic Record Sheet



Details on acquisitions

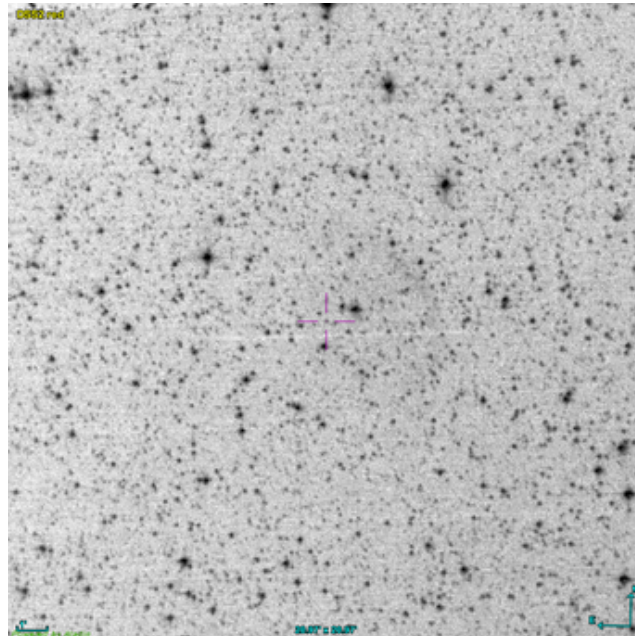
Object	MeWe 2-4
Coordinates (J2000)	14:01:15.45 -50:40:09.90
Type	Likely PN

Observation date	27.287/01/2026
Weather conditions	/
Observer	2SPOT
Location	Deep Sky Chile (CL)

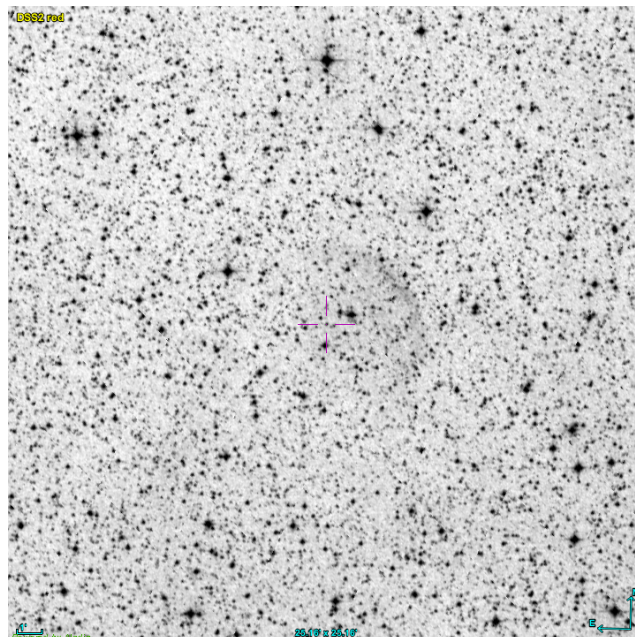
Mount	10 Micron GM3000 HPS
Telescope	Newton 300mm F/4
Spectroscope	Alpy 600 (23um slit)
Resolution (bin 1x1)	~1nm at 656 nm
Principal camera	Atik 414 EX
Dispersion (bin 1x1)	~0,3 nm/pixel at 656 nm
Cam temperature	-10°C
Binning	2x2
Guiding camera	ASI 178MM
Data acquisition Soft	Prism v11
Data processing soft	ISIS V6.1.1

Exposure on object	4 x 1200 s
Master Dark	Corrected
Master Flat	Corrected
Master Offset	Corrected
Neon-Argon calibration	Corrected
Reference star calib.	HD126981_B8V
Exposure on ref star	5 x 30 s
Ref star Sp. date	27.319/01/2026

Slit position



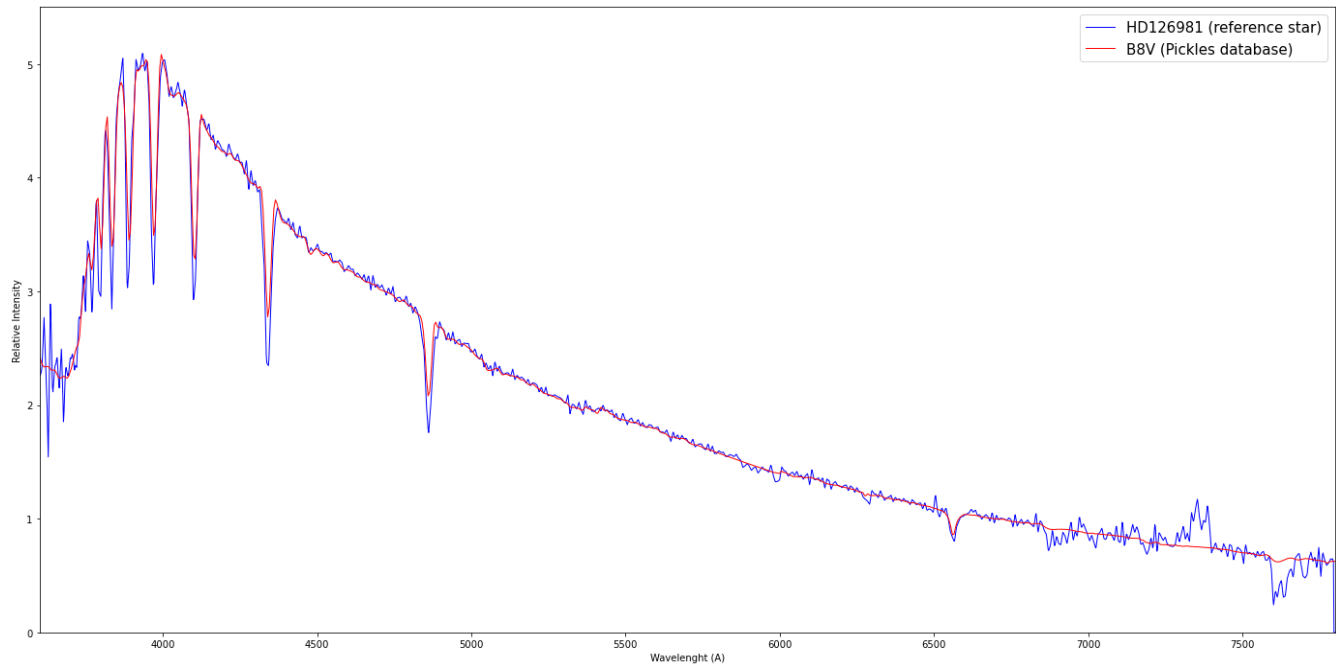
Object picture(s)



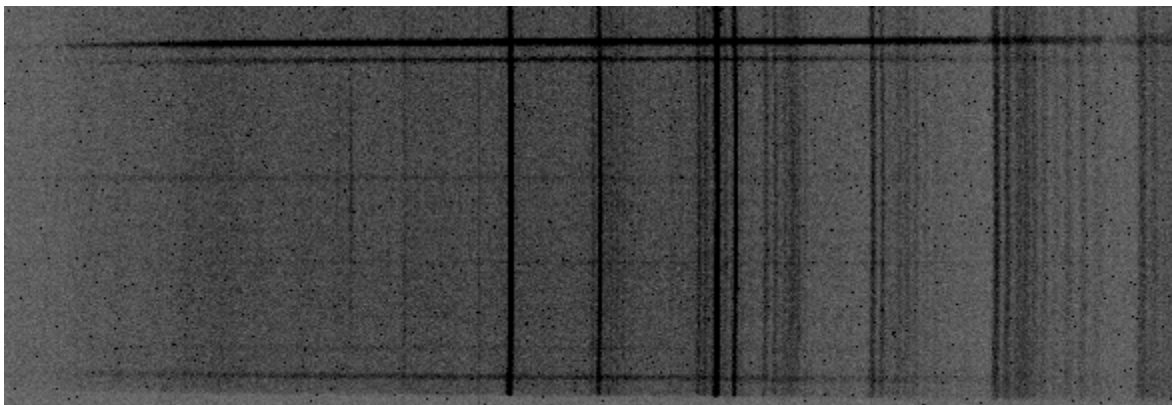


Instrumental Response and 2D Spectra

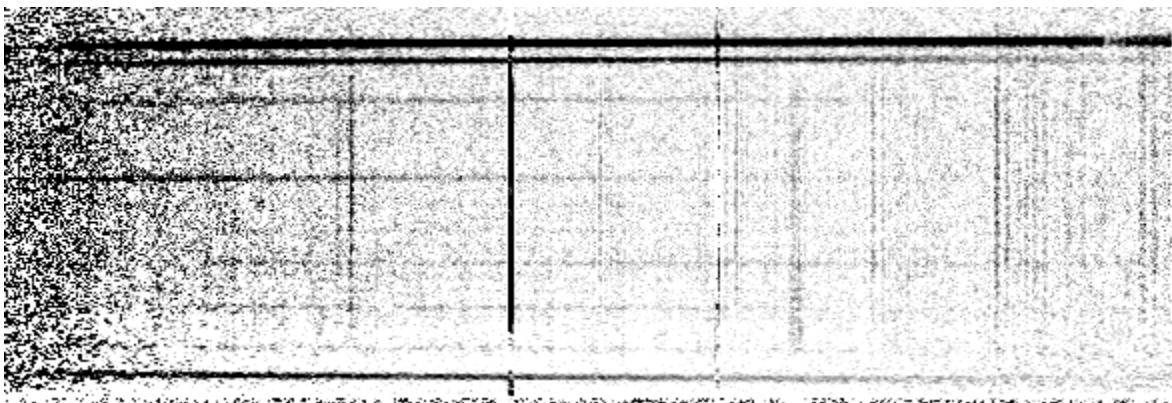
Instrumental response (red = theoretical ref star spectrum ; blue = acquired ref star spectrum with instrumental response correction applied)

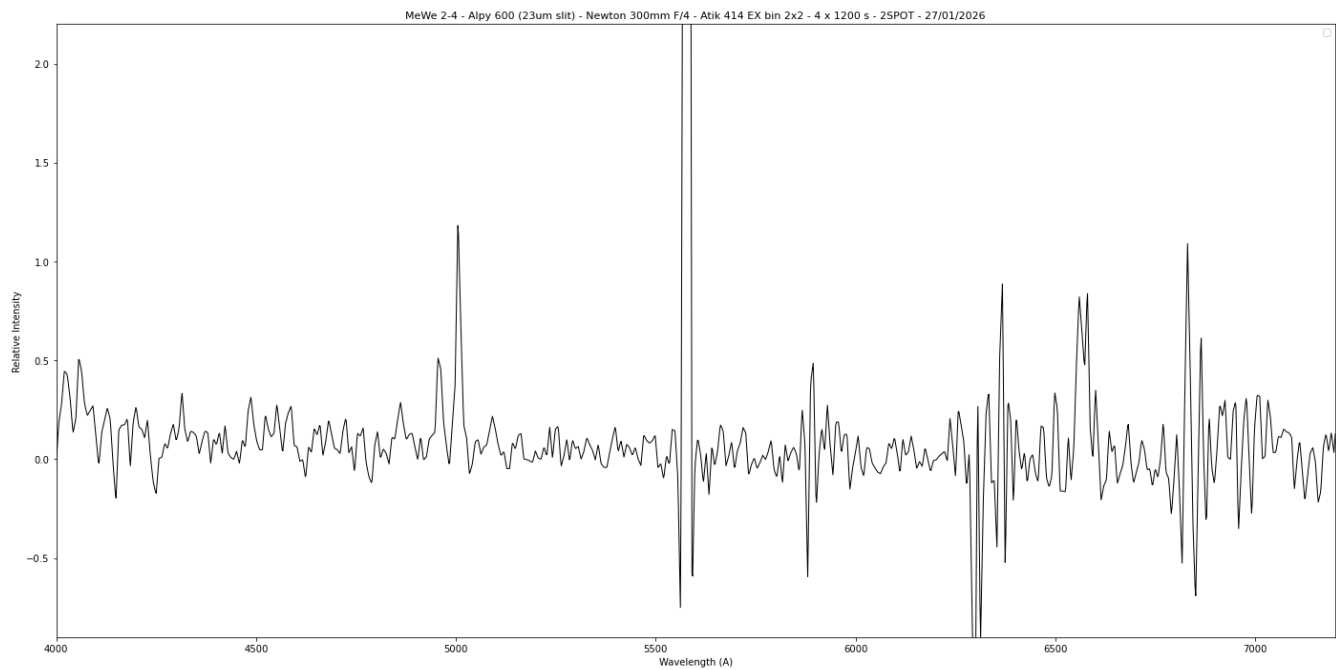


2D Raw spectrum



2D Processed spectrum





Comments

Object already classified as Likely PN.

Extensive nebulosity of the object relative to the size of the slit. Delicate subtraction of the sky.

Hdelta, [OIII], Halpha and [NII] lines detected.

MeWe_2-4 is probably a true PN.