



Spectroscopic Record Sheet



Details on acquisitions

Object	MPA J1711-3112
Coordinates (J2000)	17:11:37.00 -31:12:21.17
Type	Likely PN

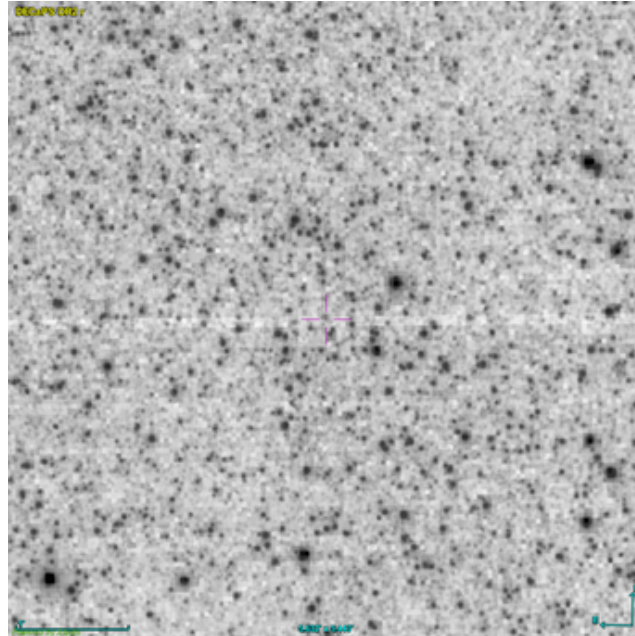
Observation date	21.344/04/2026
Weather conditions	/
Observer	2SPOT
Location	Deep Sky Chile (CL)

Mount	10 Micron GM3000 HPS
Telescope	Newton 300mm F/4
Spectroscope	Alpy 600 (23um slit)
Resolution (bin 1x1)	~1nm at 656 nm
Principal camera	Atik 414 EX
Dispersion (bin 1x1)	~0,3 nm/pixel at 656 nm
Cam temperature	-10°C
Binning	2x2
Guiding camera	ASI 178MM
Data acquisition Soft	Prism v11
Data processing soft	ISIS V6.1.1

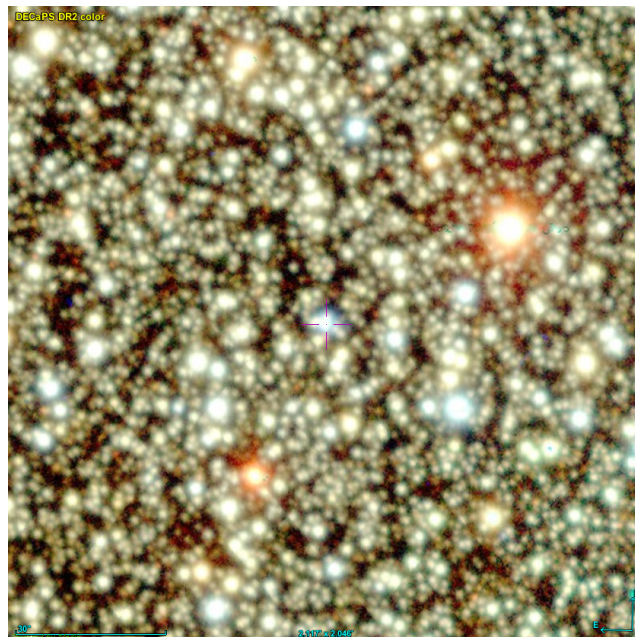
Exposure on object	4 x 1200 s
Master Dark	Corrected
Master Flat	Corrected
Master Offset	Corrected
Neon-Argon calibration	Corrected

Reference star calib.	HD153613_B8V
Exposure on ref star	5 x 4.85198 s
Ref star Sp. date	21.376/04/2026

Slit position



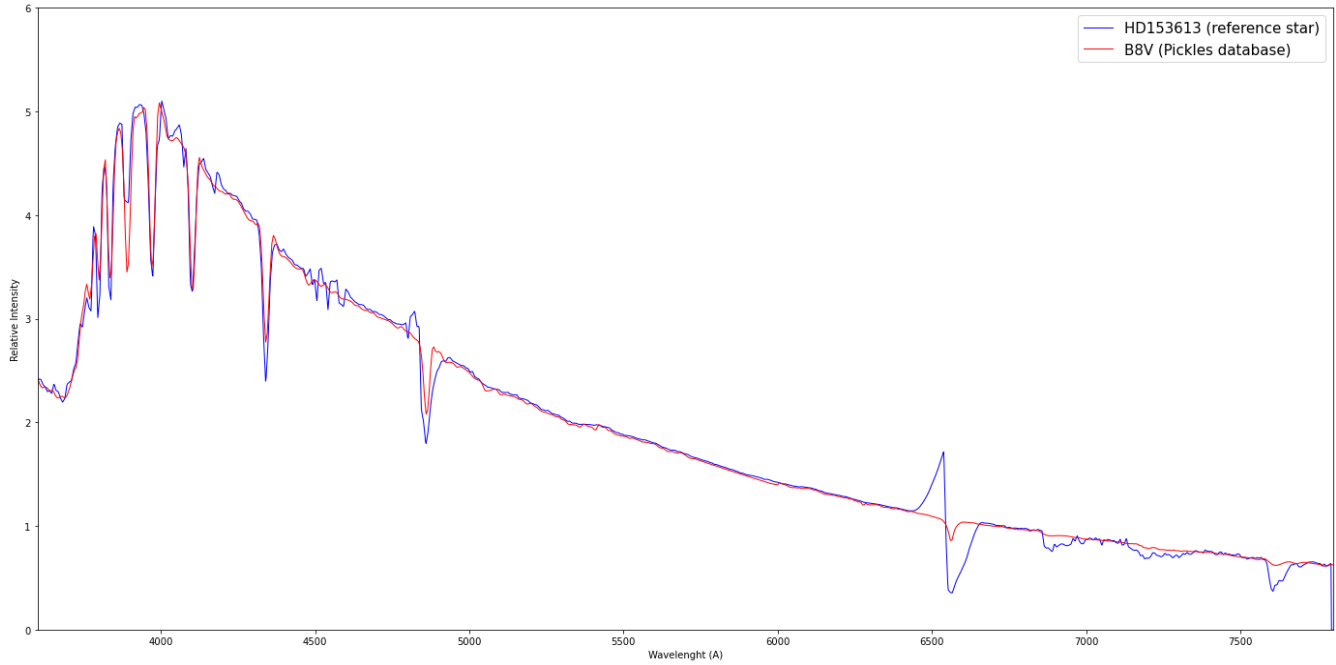
Object picture(s)



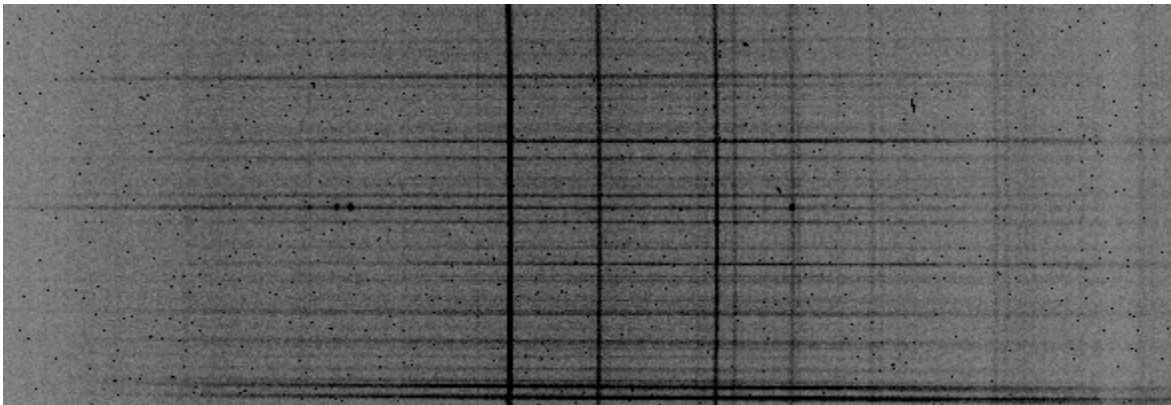


Instrumental Response and 2D Spectra

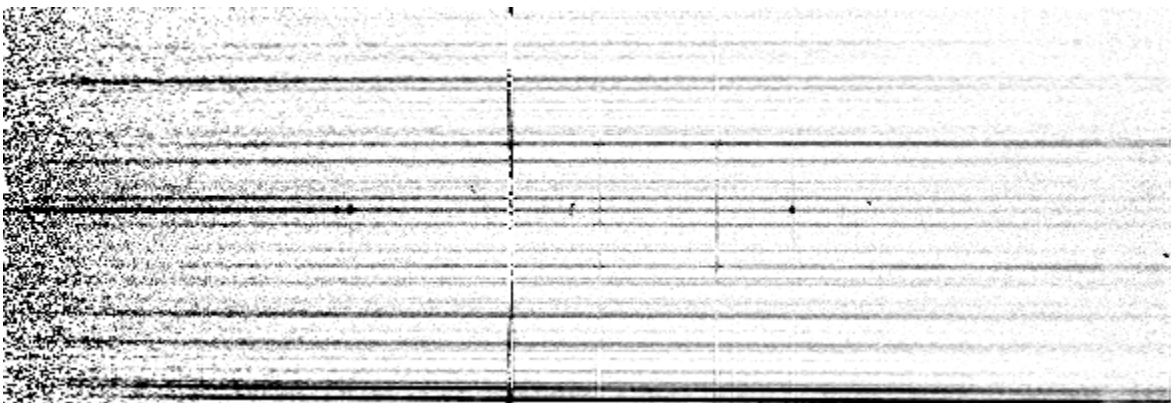
Instrumental response (red = theoretical ref star spectrum ; blue = acquired ref star spectrum with instrumental response correction applied)



2D Raw spectrum

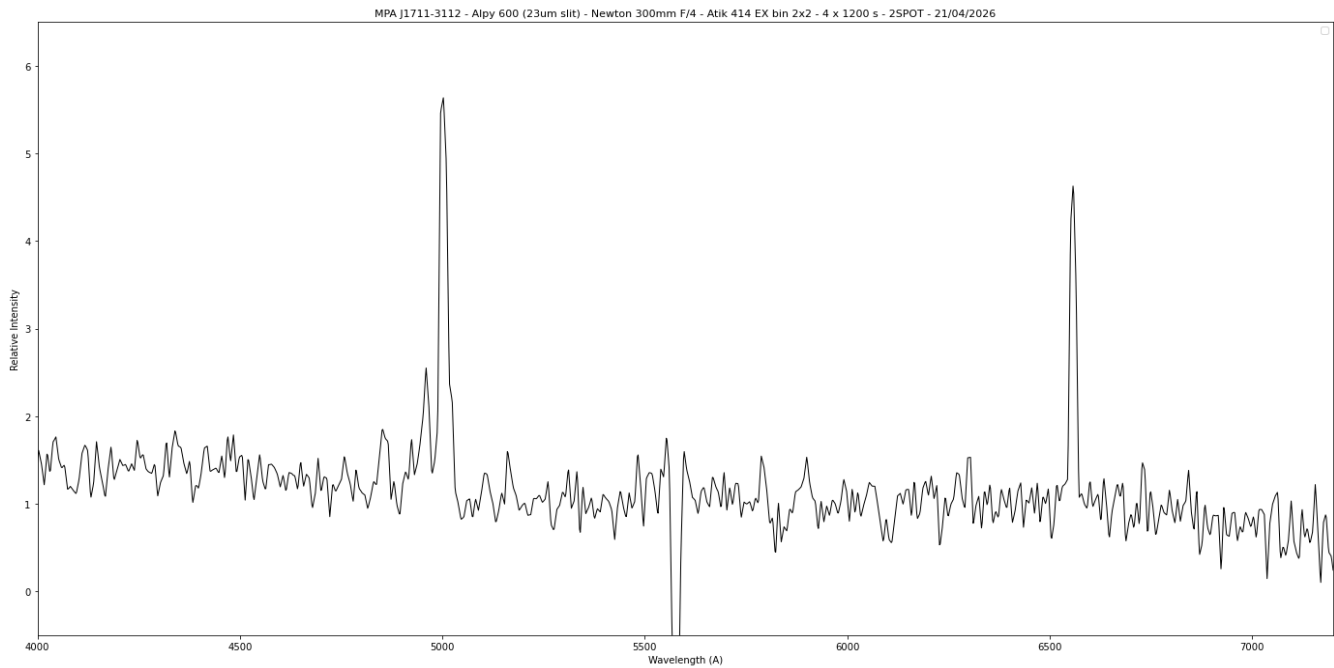


2D Processed spectrum





Results



Comments

Object already classified as Likely PN.
Continuum observed.
Hbeta, [OIII] and Halpha lines detected.
MPA J1711-3112 is probably a true PN.