



Spectroscopic Record Sheet



Details on acquisitions

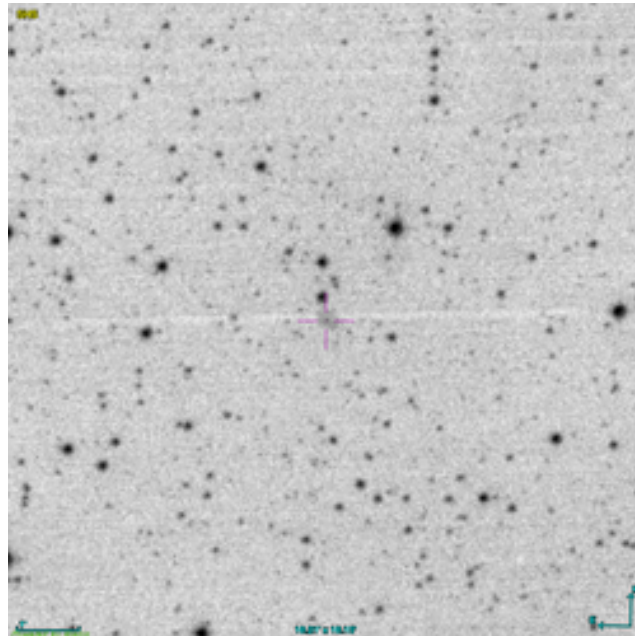
Object	MPA J0835-6039
Coordinates (J2000)	08:35:07.20 -60:39:42.62
Type	Likely PN

Observation date	18.125/12/2025
Weather conditions	/
Observer	2SPOT
Location	Deep Sky Chile (CL)

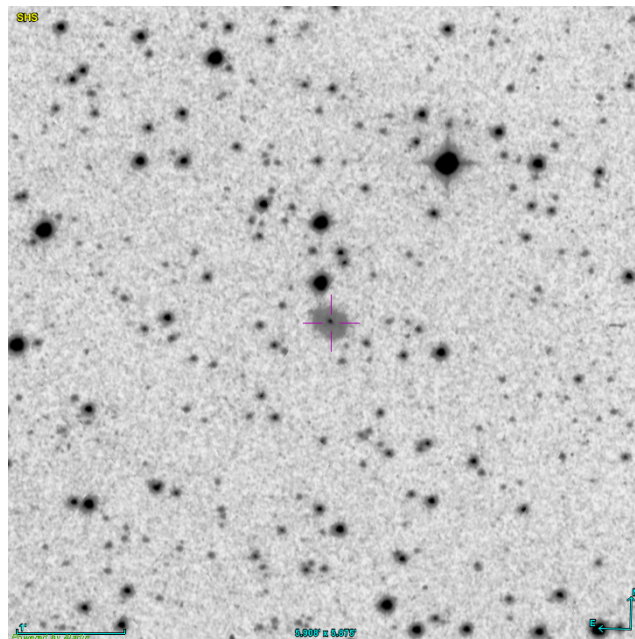
Mount	10 Micron GM3000 HPS
Telescope	Newton 300mm F/4
Spectroscope	Alpy 600 (23um slit)
Resolution (bin 1x1)	~1nm at 656 nm
Principal camera	Atik 414 EX
Dispersion (bin 1x1)	~0,3 nm/pixel at 656 nm
Cam temperature	-10°C
Binning	2x2
Guiding camera	ASI 178MM
Data acquisition Soft	Prism v11.2.3.21
Data processing soft	ISIS V6.1.1

Exposure on object	5 x 1200 s
Master Dark	Corrected
Master Flat	Corrected
Master Offset	Corrected
Neon-Argon calibration	Corrected
Reference star calib.	HD75311_B3V
Exposure on ref star	5 x 2.46479 s
Ref star Sp. date	18.163/12/2025

Slit position



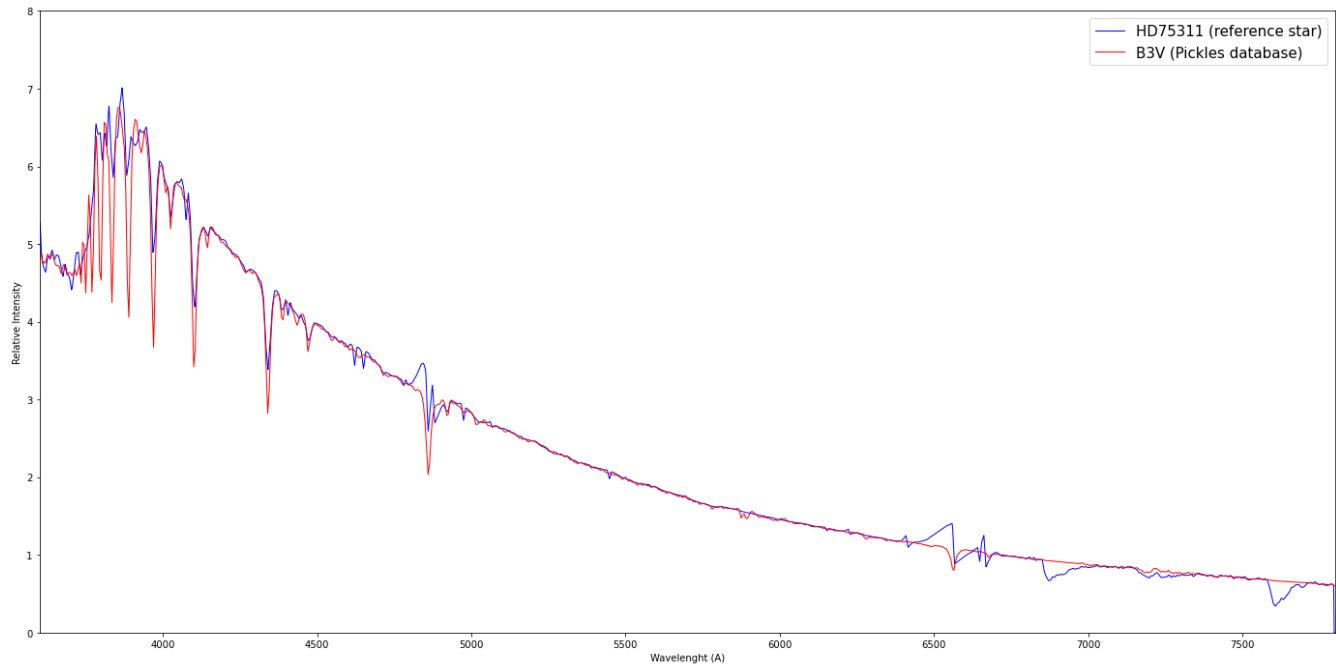
Object picture(s)



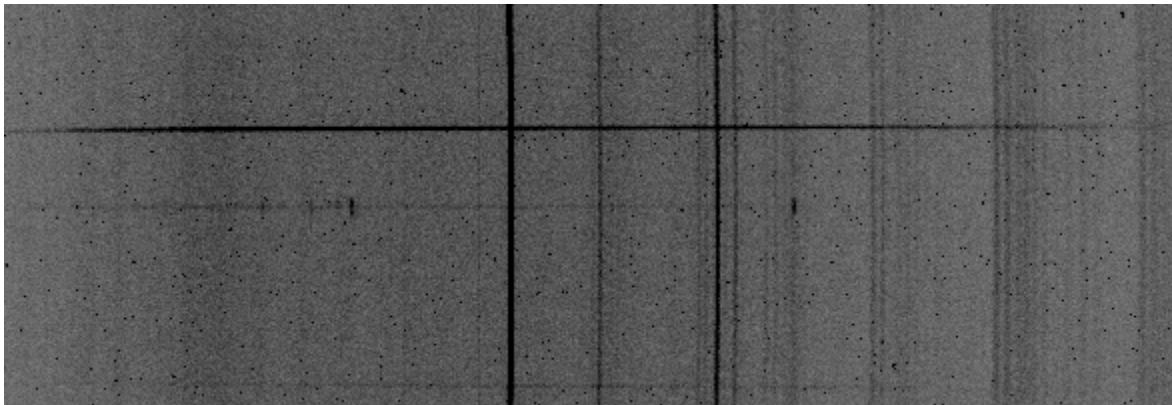


Instrumental Response and 2D Spectra

Instrumental response (red = theoretical ref star spectrum ; blue = acquired ref star spectrum with instrumental response correction applied)

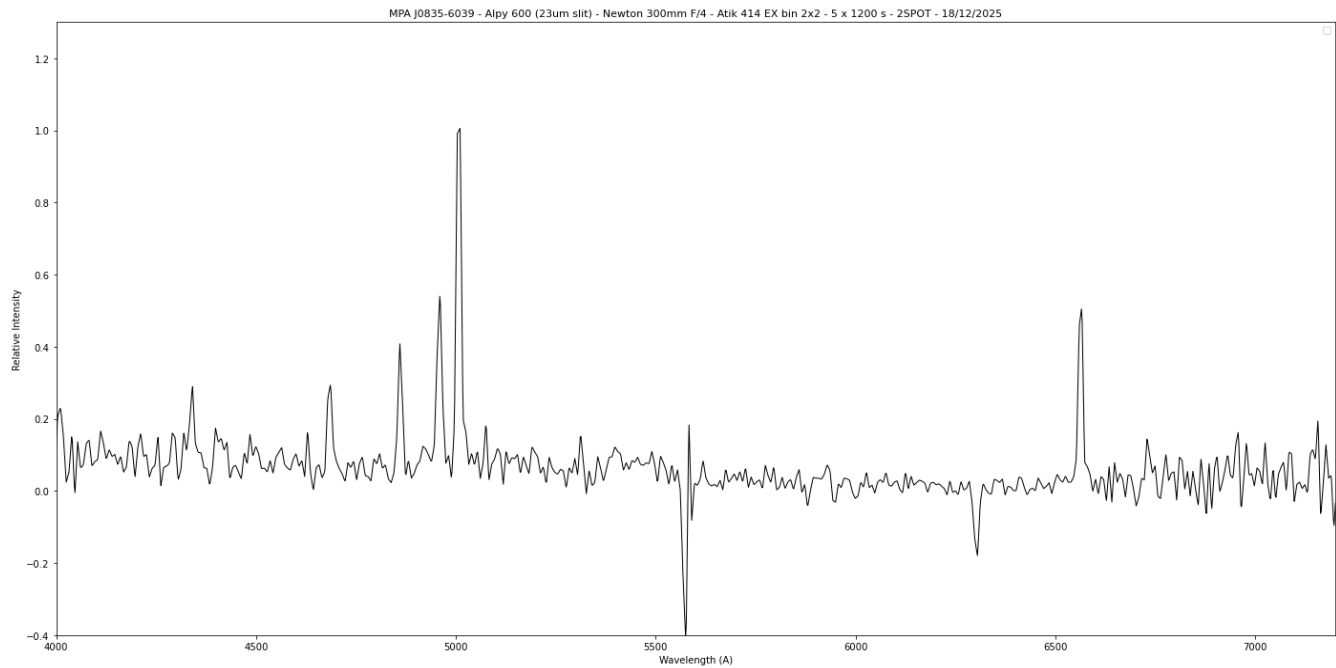


2D Raw spectrum



2D Processed spectrum





Comments

Object already classified as Likely PN.

Hgamma, strong HeII(4686Å), Hbeta, [OIII] and Halpha lines detected.

MPA J0835-6039 could be a PN with very high excitation (strong lambda4686

HeII line and absence of [NII] and [SII] lines).