



## Spectroscopic Record Sheet



### Details on acquisitions

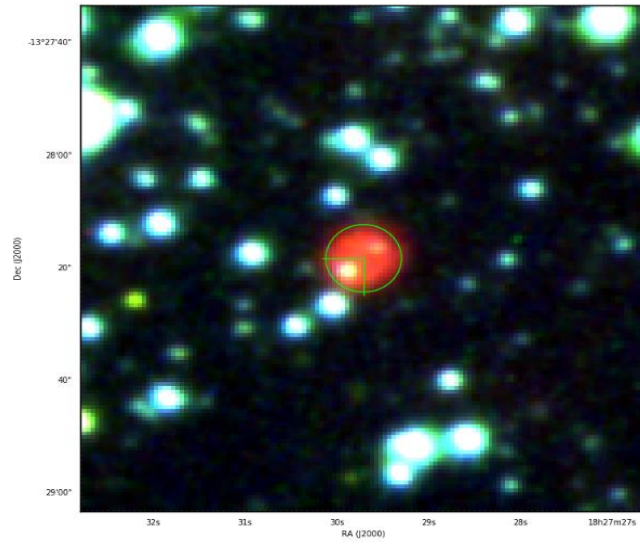
Object	MPA
Coordinates (J2000)	18:27:29.70 -13:28:18.41
Type	PN Candidate

Observation date	28.077/05/2020 (d/m/y)
Meteorological conditions	18°C
Observer	L.Mulato
Location	Cornillon France

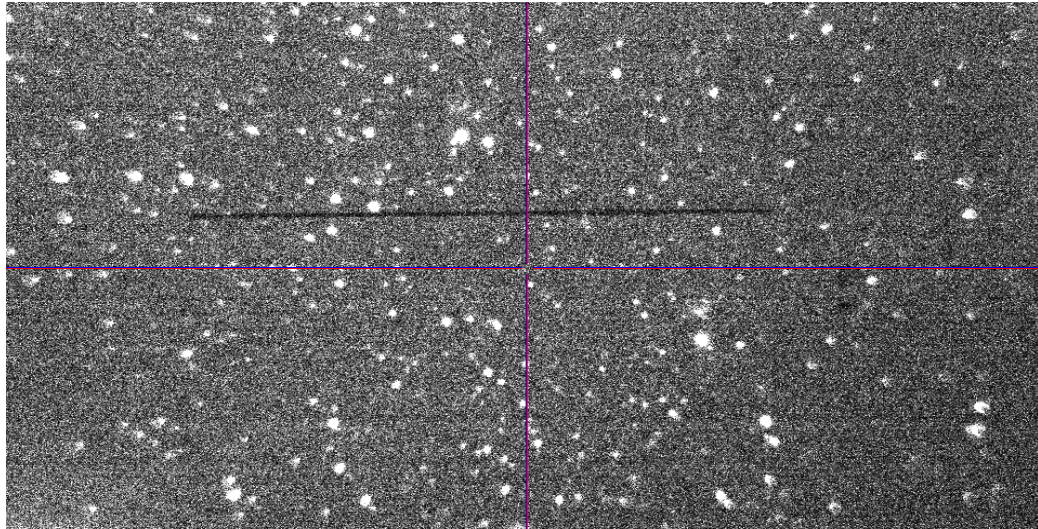
Mount	NEQ6
Telescope	Newton Skywatcher 200 mm F/5
Spectrograph	Alpy 600 - 23 $\mu\text{m}$ slit
Resolution (bin 1x1)	$\sim 1 \text{ \AA}$ at $\lambda 656 \text{ nm}$
Science camera	ATIK 414 EX
Dispersion (bin 1x1)	$\sim 0,3 \text{ nm/pixel}$ at $\lambda 656 \text{ nm}$
Cam Temperature	0 °C
Binning	2x2
Guiding camera	ASI290 MM non cooled
Data acquisition Soft	PRISM V10
Data processing Soft	Isis V5.9.3

Exposure on object	5	x	600	s
Master Dark date	22/05/2020		(d/m/y)	
Dark Exposure	7	x	600	s
Dark Temperature	0		°C	
Master Offset date	22/05/2020		(d/m/y)	
Master Flat date	22/05/2020		(d/m/y)	
Neon-Argon calib. date	28/05/2020		(d/m/y)	
Reference star calib.	HD16336			
Exposure on ref star	14	x	10	s
Ref Star Sp. date	28.102/05/2020			

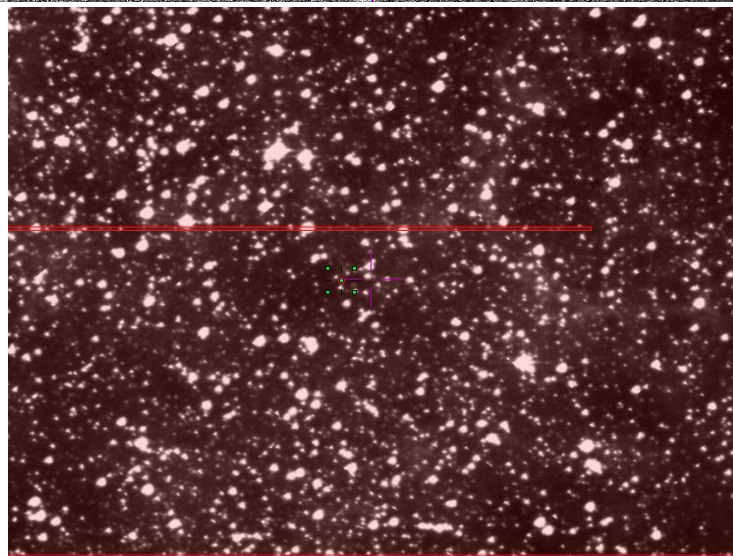
Image SHS



Slit position  
Autoguider



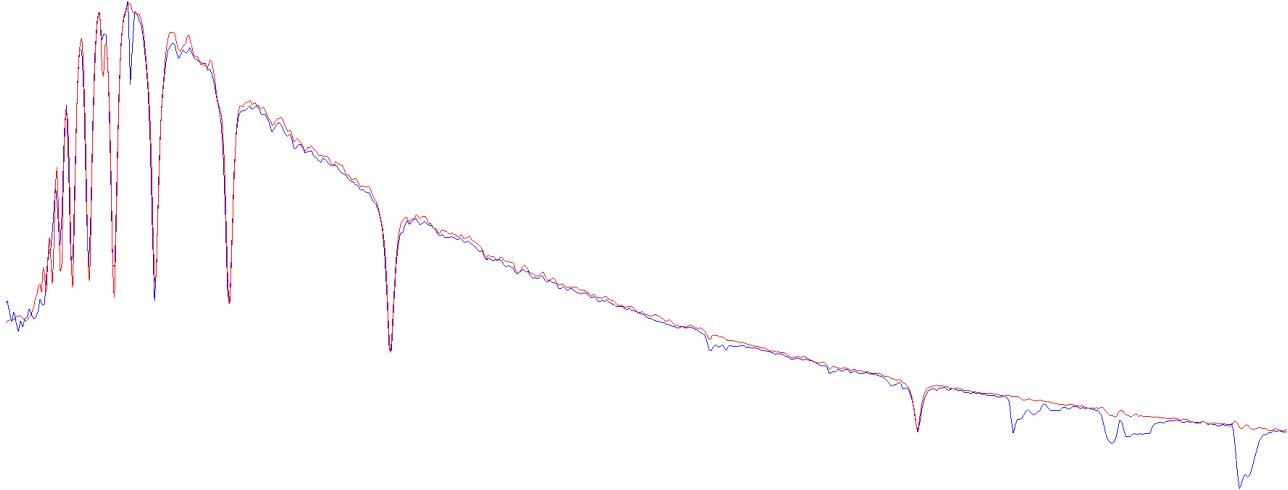
Slit position  
SHS



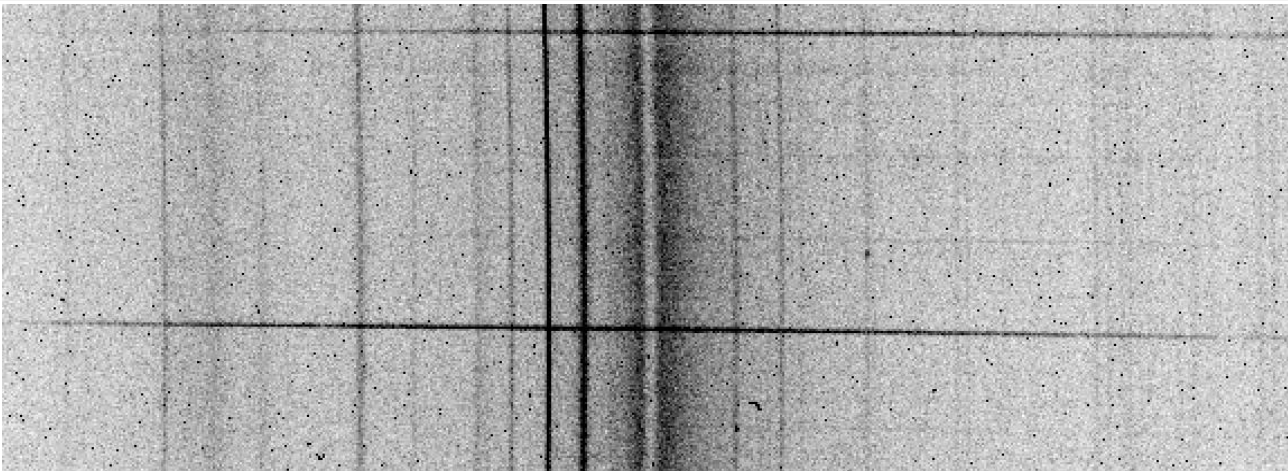


## Instrumental Response and 2D Spectrum

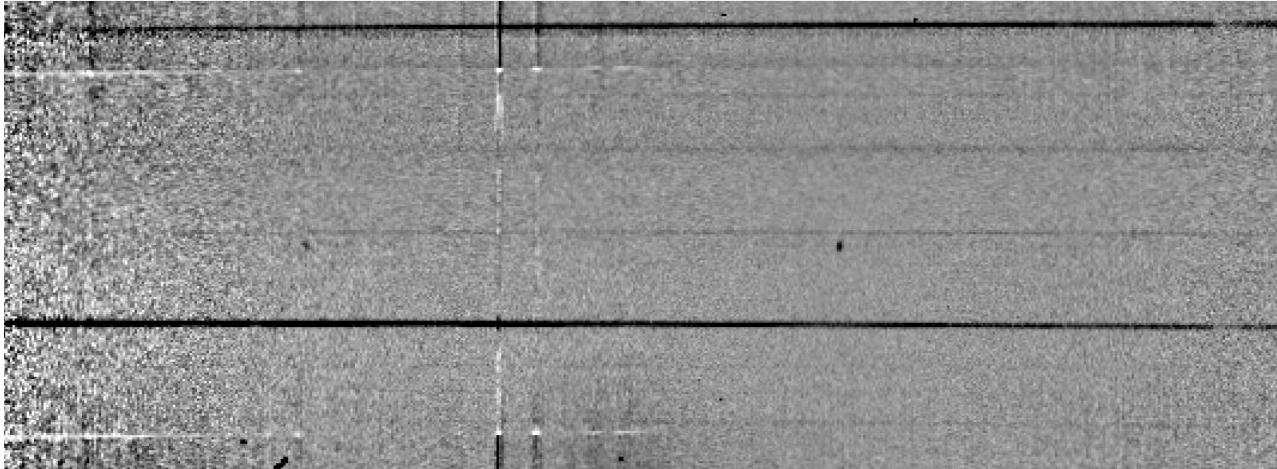
Instrumental response (red = theoretical ref star spectrum ; blue = acquired ref star spectrum with instrumental response correction applied)

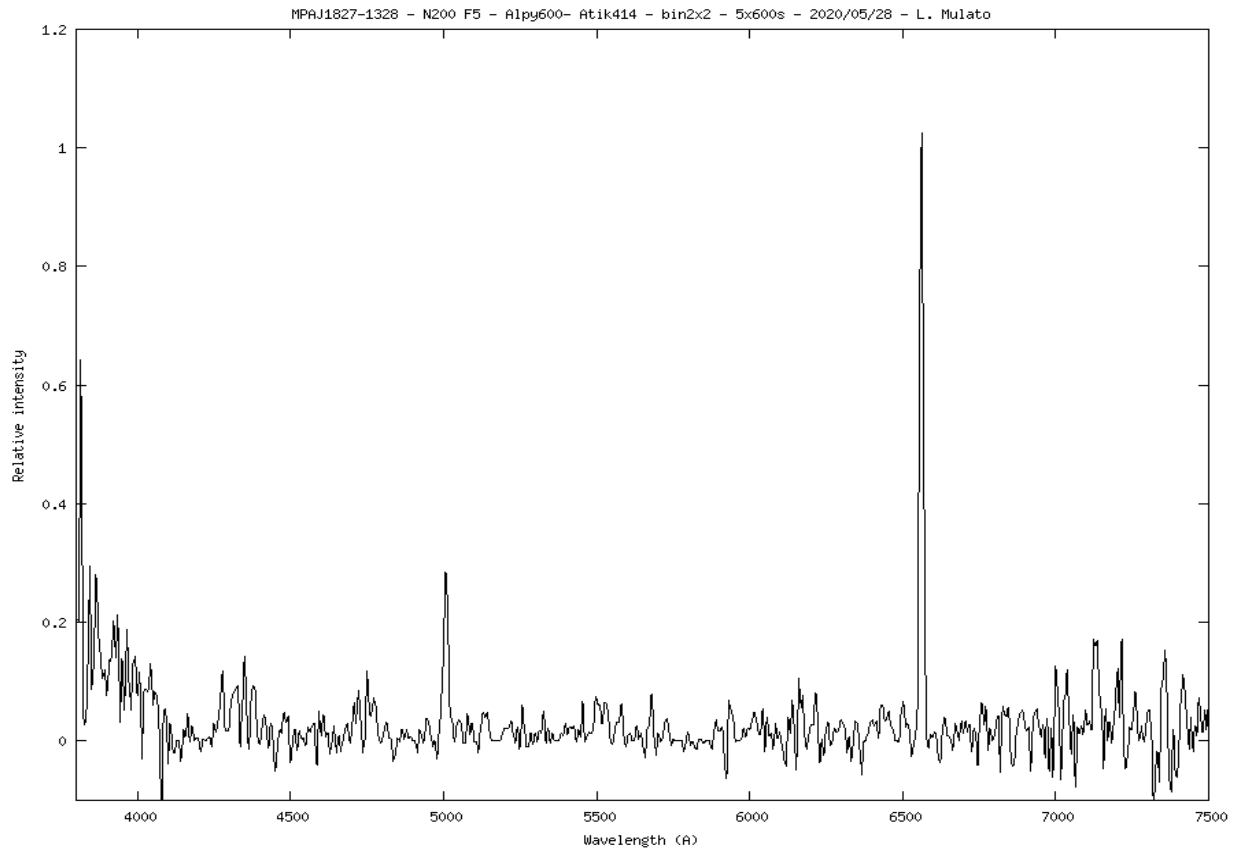


2D Raw spectrum



Processed 2D spectrum





**Comments:**

Lines detected : H-alpha and [O III] 5007. No H-beta nor [N II].

MPA J1827-1328 is likely a reddened medium-high excitation PN.