



Spectroscopic Record Sheet



Details on acquisitions

| | |
|---------------------|--------------------------|
| Object | Kn J1731.8-2143 |
| Coordinates (J2000) | 17:31:53.02 -21:43:33.30 |
| Type | Likely PN |

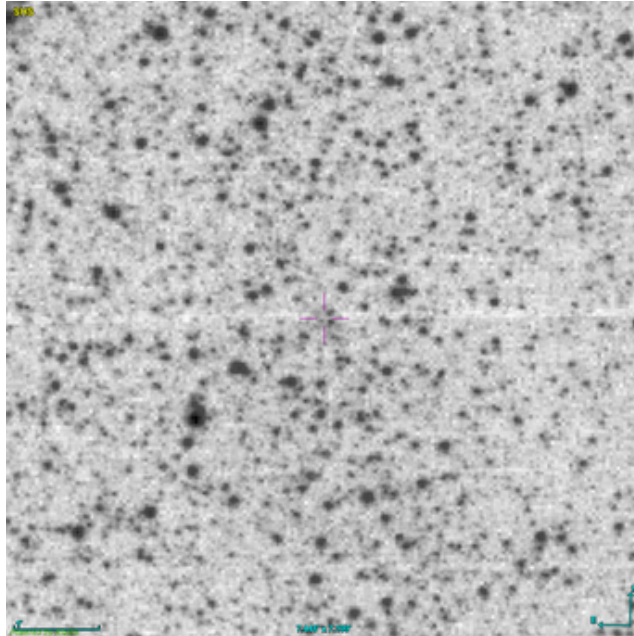
| | |
|--------------------|---------------------|
| Observation date | 18.765/05/2026 |
| Weather conditions | / |
| Observer | 2SPOT |
| Location | Deep Sky Chile (CL) |

| | |
|-----------------------|-------------------------|
| Mount | 10 Micron GM3000 HPS |
| Telescope | Newton 300mm F/4 |
| Spectroscope | Alpy 600 (23um slit) |
| Resolution (bin 1x1) | ~1nm at 656 nm |
| Principal camera | Atik 414 EX |
| Dispersion (bin 1x1) | ~0,3 nm/pixel at 656 nm |
| Cam temperature | -10°C |
| Binning | 2x2 |
| Guiding camera | ASI 178MM |
| Data acquisition Soft | Prism v11 |
| Data processing soft | ISIS V6.1.1 |

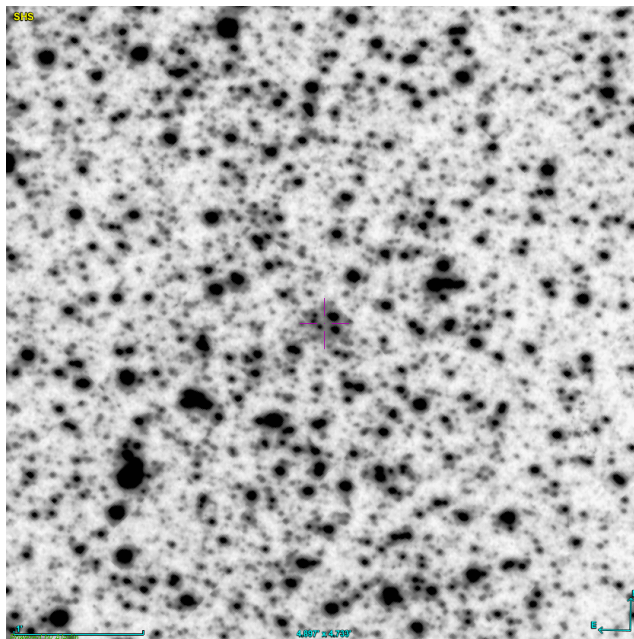
| | |
|------------------------|------------|
| Exposure on object | 8 x 1200 s |
| Master Dark | Corrected |
| Master Flat | Corrected |
| Master Offset | Corrected |
| Neon-Argon calibration | Corrected |

| | |
|-----------------------|----------------|
| Reference star calib. | HD152849_A0V |
| Exposure on ref star | 5 x 6.04216 s |
| Ref star Sp. date | 19.258/05/2026 |

Slit position



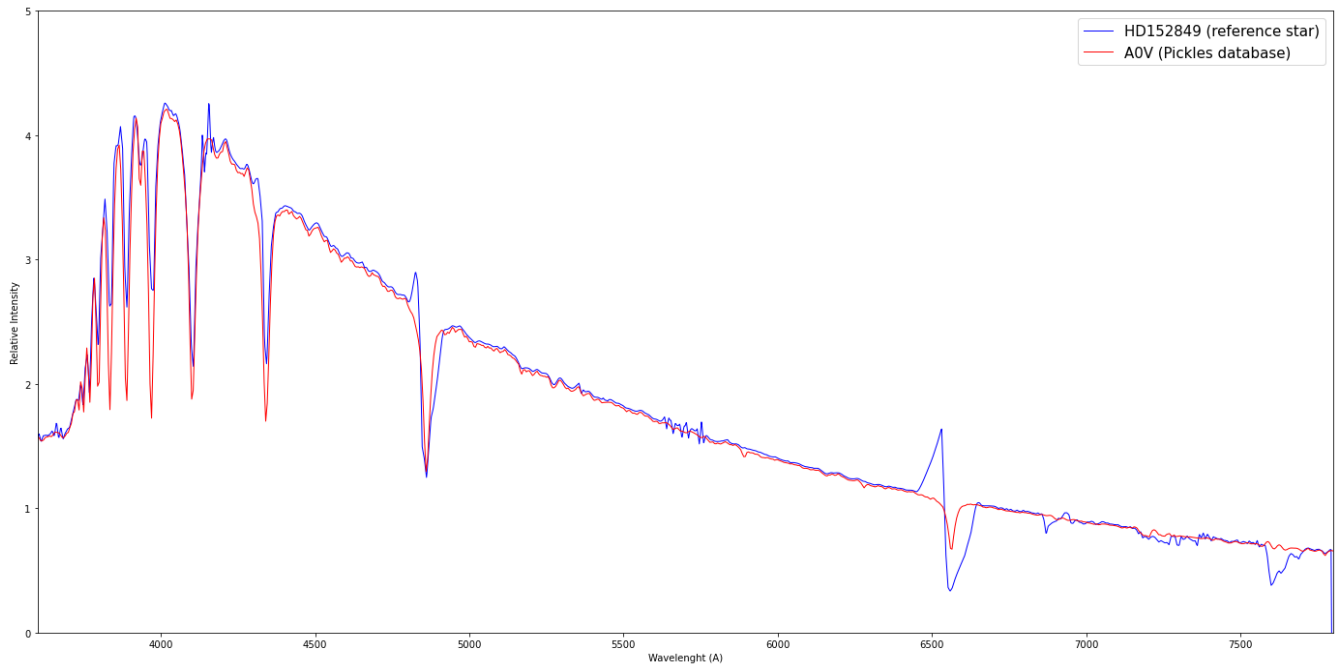
Object picture(s)



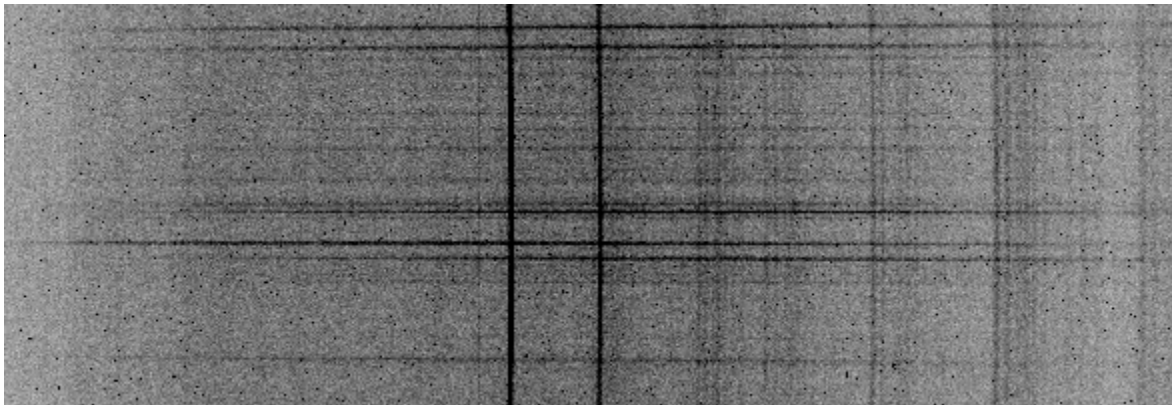


Instrumental Response and 2D Spectra

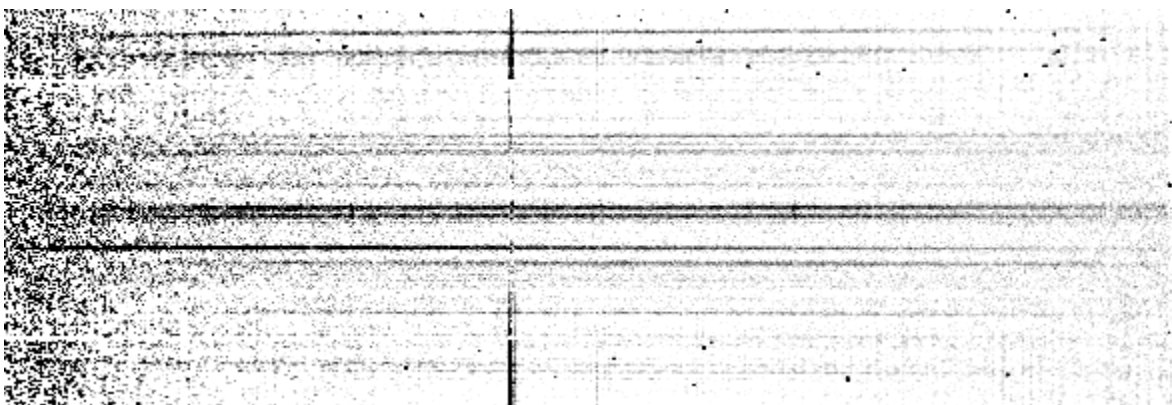
Instrumental response (red = theoretical ref star spectrum ; blue = acquired ref star spectrum with instrumental response correction applied)

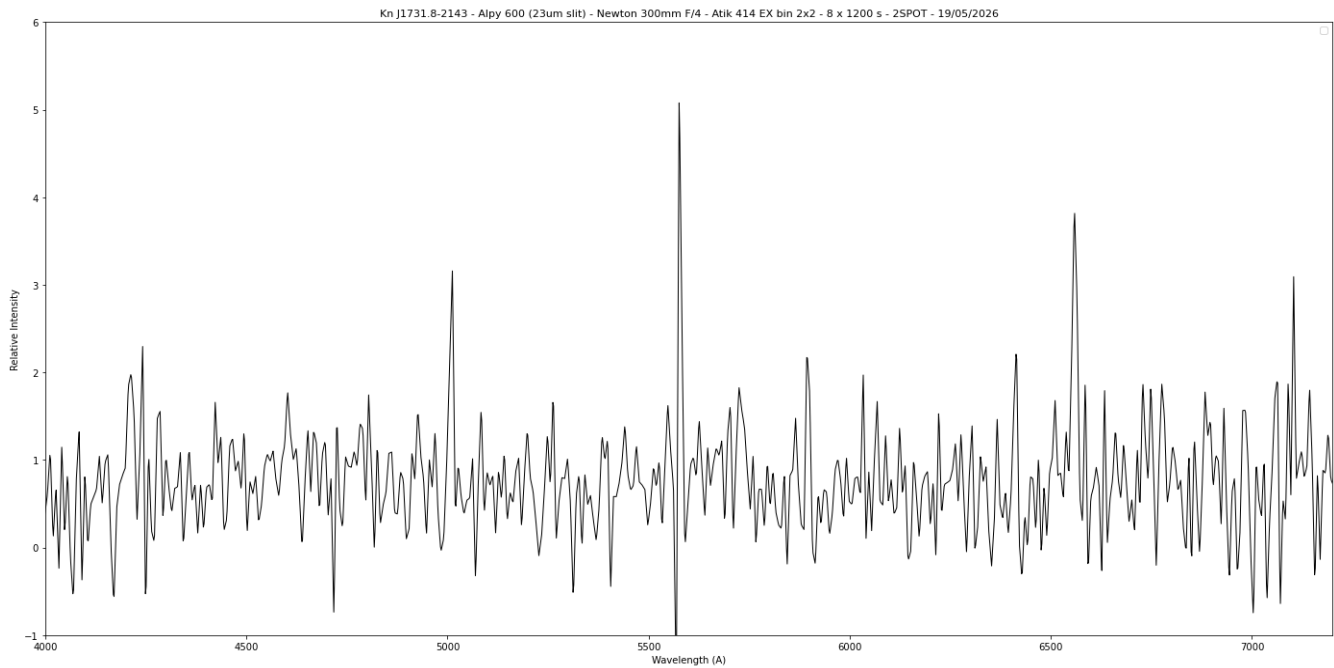


2D Raw spectrum



2D Processed spectrum





Comments

Object already classified as Likely PN.
[OIII](5007A) and Halpha lines detected.
Kn J1731.8-2143 is certainly a true PN.