



Spectroscopic Record Sheet



Details on acquisitions

Object	FP J0911-4051
Coordinates (J2000)	09:11:45.63 -40:51:58.50
Type	Possible PN

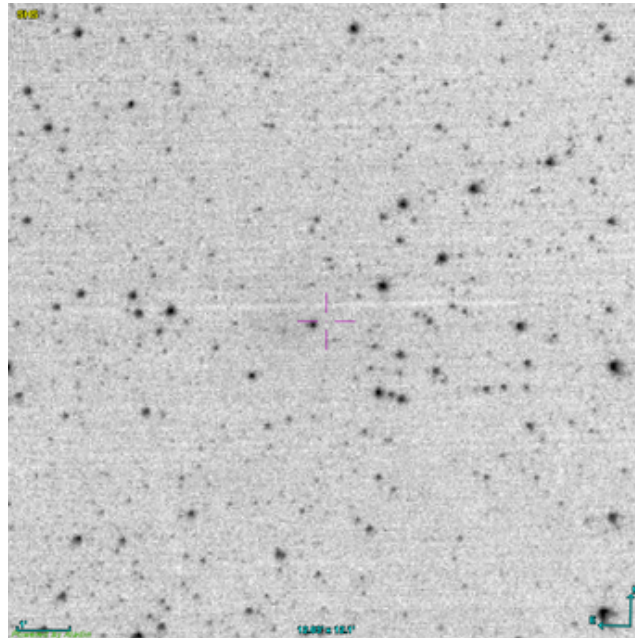
Observation date	23.792/01/2026
Weather conditions	/
Observer	2SPOT
Location	Deep Sky Chile (CL)

Mount	10 Micron GM3000 HPS
Telescope	Newton 300mm F/4
Spectroscope	Alpy 600 (23um slit)
Resolution (bin 1x1)	~1nm at 656 nm
Principal camera	Atik 414 EX
Dispersion (bin 1x1)	~0,3 nm/pixel at 656 nm
Cam temperature	-10°C
Binning	2x2
Guiding camera	ASI 178MM
Data acquisition Soft	Prism v11
Data processing soft	ISIS V6.1.1

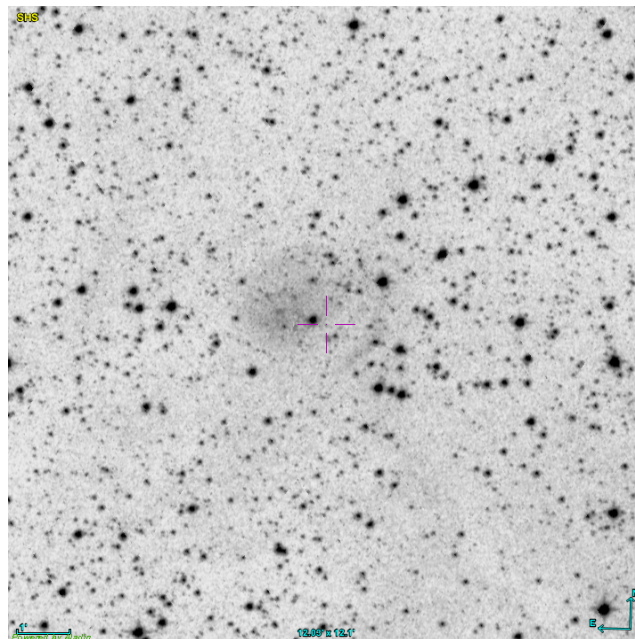
Exposure on object	11 x 1200 s
Master Dark	Corrected
Master Flat	Corrected
Master Offset	Corrected
Neon-Argon calibration	Corrected
Reference star calib.	HD71801_B3V
Exposure on ref star	5 x 11.52686 s
Ref star Sp. date	19.374/01/2026

Slit position and images

Slit position



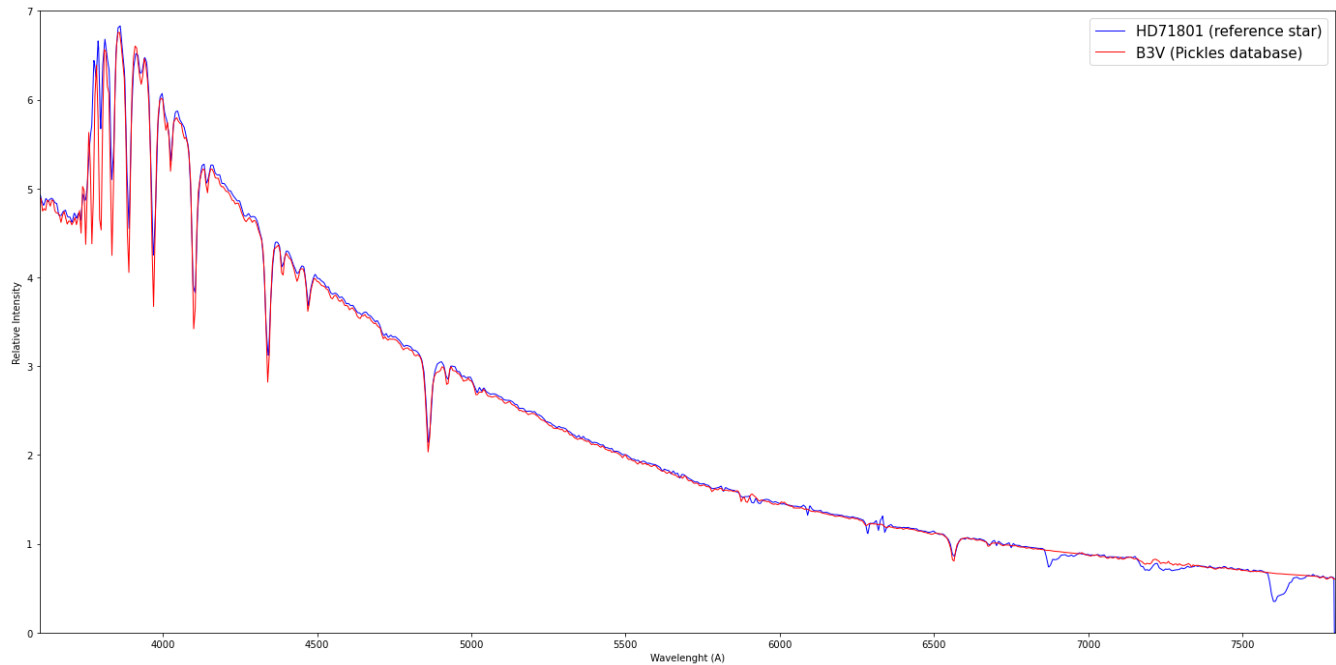
Object picture(s)



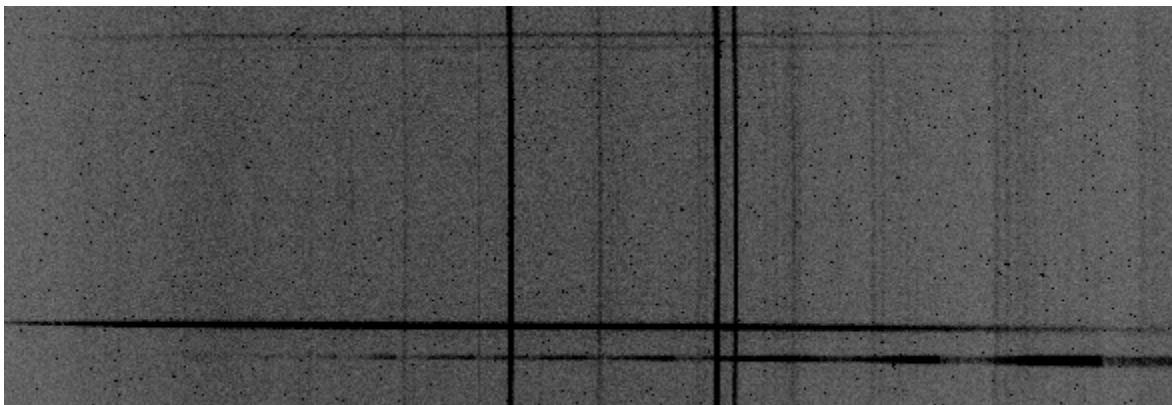


Instrumental Response and 2D Spectra

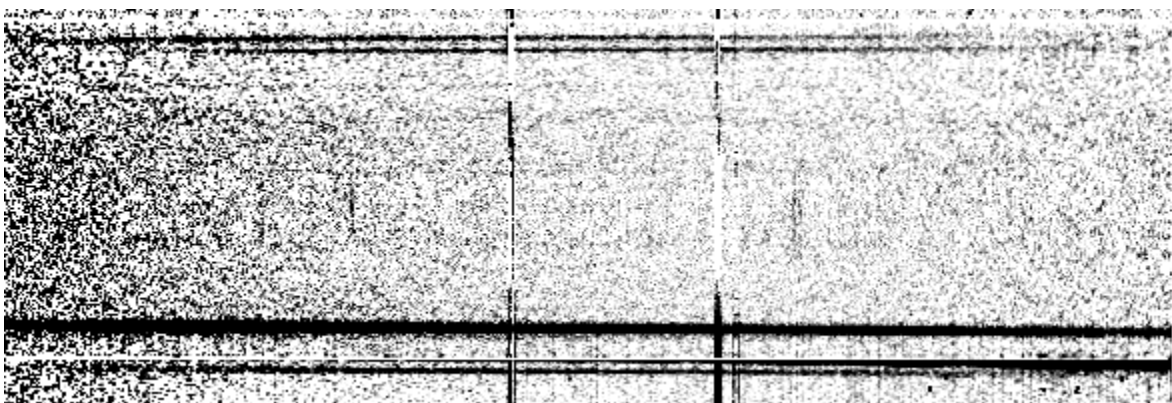
Instrumental response (red = theoretical ref star spectrum ; blue = acquired ref star spectrum with instrumental response correction applied)

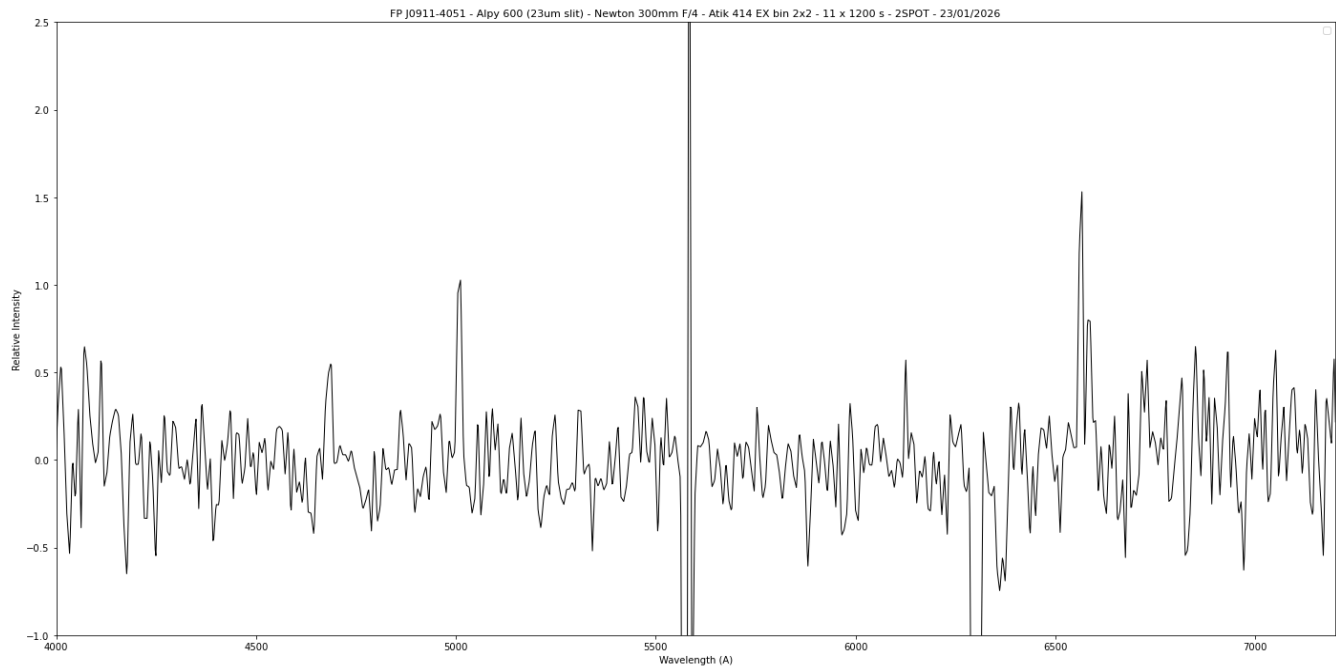


2D Raw spectrum



2D Processed spectrum





Comments

Object already classified as Possible PN.

HeII(4686Å), [OIII], H α and [NII] lines detected.

FP J0911-4051 is probably a true PN.