



Spectroscopic Record Sheet



Details on acquisitions

Object	BMP J0831-4831
Coordinates (J2000)	08:31:36.60 -48:31:22.84
Type	Likely PN

Observation date	21.225/12/2025
Weather conditions	/
Observer	2SPOT
Location	Deep Sky Chile (CL)

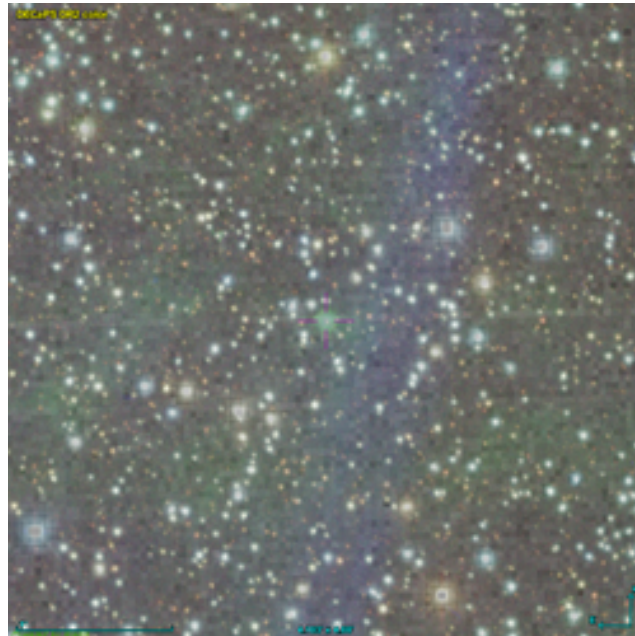
Mount	10 Micron GM3000 HPS
Telescope	Newton 300mm F/4
Spectroscope	Alpy 600 (23um slit)
Resolution (bin 1x1)	~1nm at 656 nm
Principal camera	Atik 414 EX
Dispersion (bin 1x1)	~0,3 nm/pixel at 656 nm
Cam temperature	-10°C
Binning	2x2
Guiding camera	ASI 178MM
Data acquisition Soft	Prism v11.2.3.21
Data processing soft	ISIS V6.1.1

Exposure on object	9 x 1200 s
Master Dark	Corrected
Master Flat	Corrected
Master Offset	Corrected
Neon-Argon calibration	Corrected
Reference star calib.	HD61391_B9V
Exposure on ref star	5 x 29.7816 s
Ref star Sp. date	21.278/12/2025

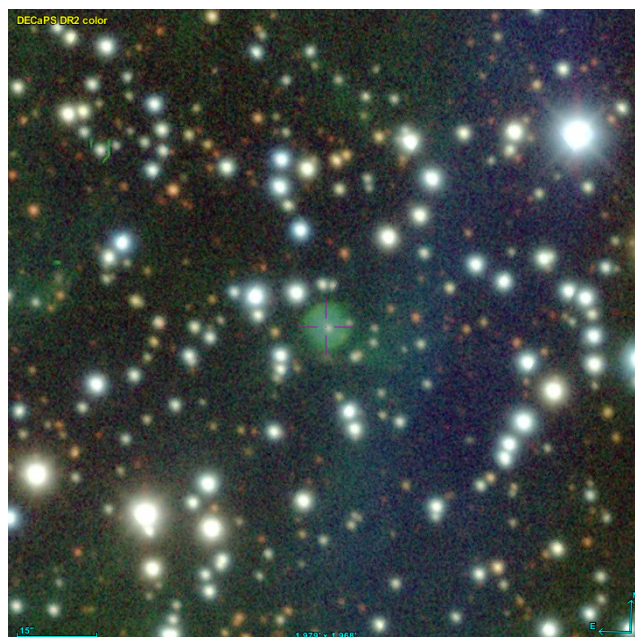


Slit position and images

Slit position



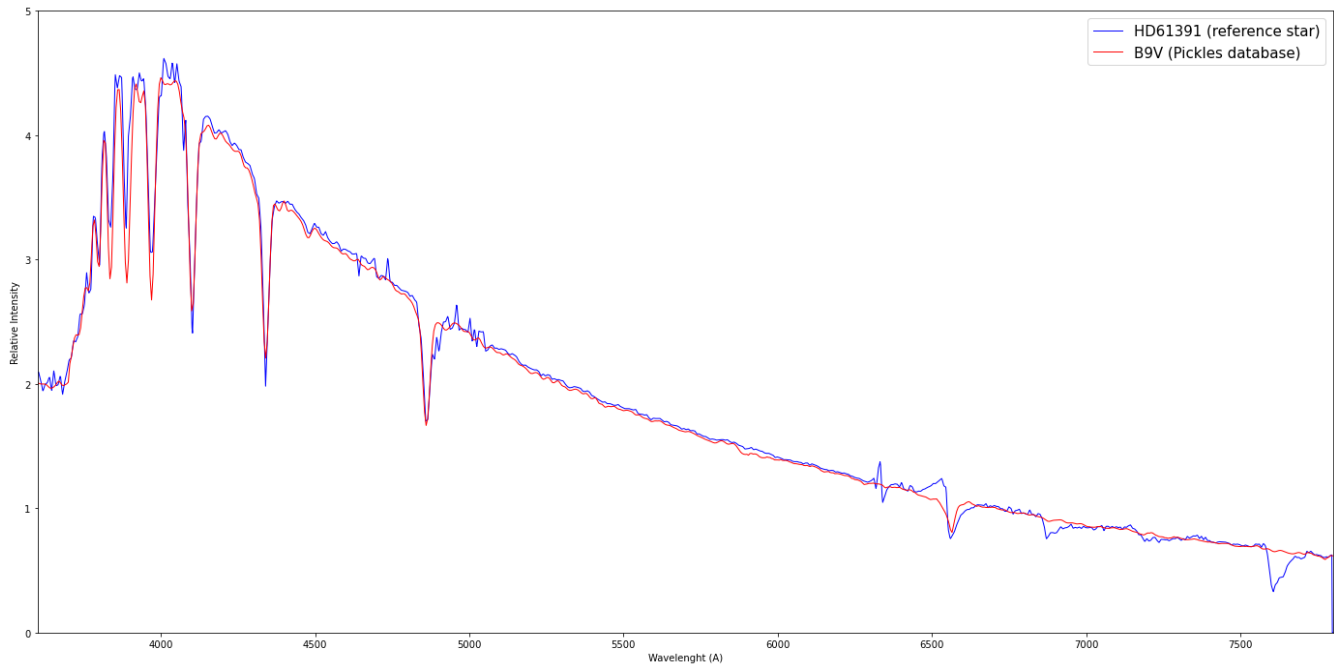
Object picture(s)



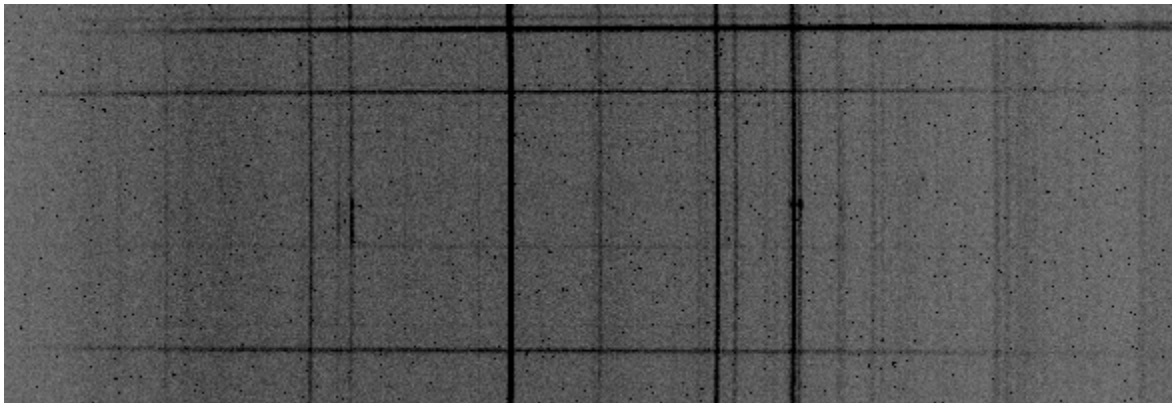


Instrumental Response and 2D Spectra

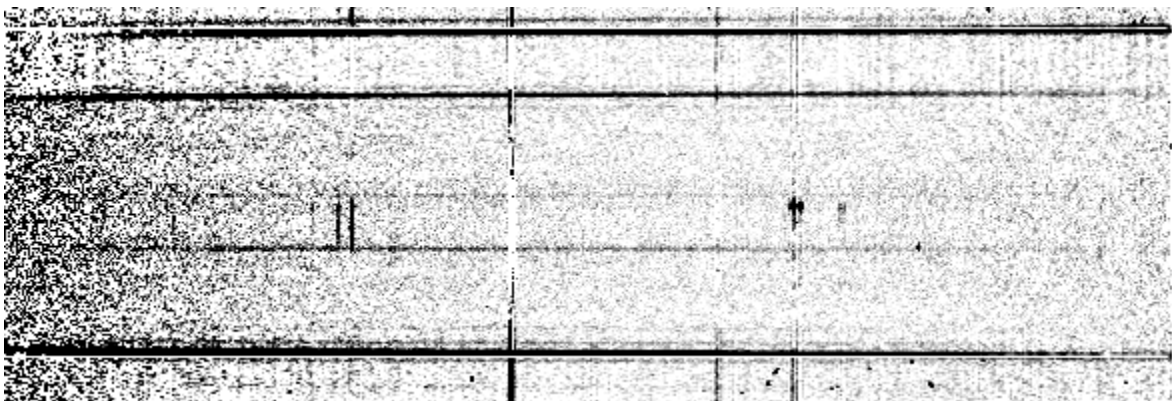
Instrumental response (red = theoretical ref star spectrum ; blue = acquired ref star spectrum with instrumental response correction applied)



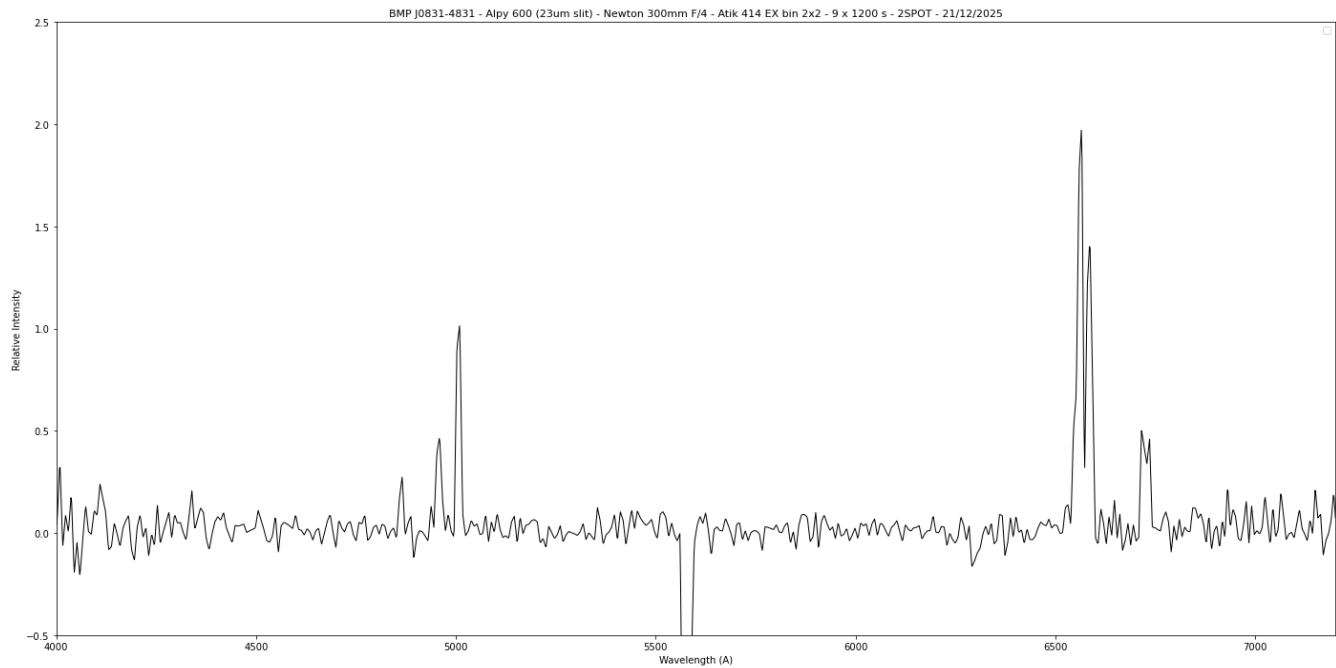
2D Raw spectrum



2D Processed spectrum



Results



Comments

Object already classified as Likely PN.

Hbeta, [OIII], [NII], Halpha and [SII] lines detected.

BMP_J0831-4831 is probably a PN, but it could also be an SNR.