



# Spectroscopic Record Sheet



## Details on acquisitions

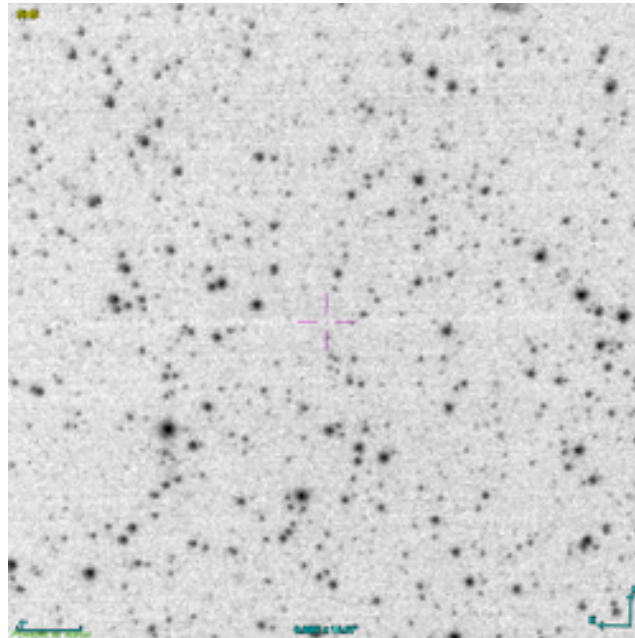
Object	BMP J0816-3150
Coordinates (J2000)	08:16:20.80 -31:50:59.42
Type	Likely PN

Observation date	18.270/12/2025
Weather conditions	/
Observer	2SPOT
Location	Deep Sky Chile (CL)

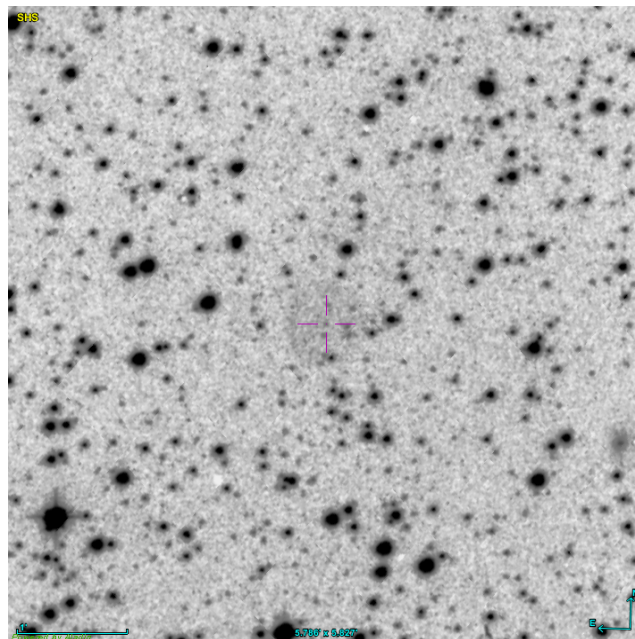
Mount	10 Micron GM3000 HPS
Telescope	Newton 300mm F/4
Spectroscope	Alpy 600 (23um slit)
Resolution (bin 1x1)	~1nm at 656 nm
Principal camera	Atik 414 EX
Dispersion (bin 1x1)	~0,3 nm/pixel at 656 nm
Cam temperature	-10°C
Binning	2x2
Guiding camera	ASI 178MM
Data acquisition Soft	Prism v11.2.3.21
Data processing soft	ISIS V6.1.1

Exposure on object	4 x 1200 s
Master Dark	Corrected
Master Flat	Corrected
Master Offset	Corrected
Neon-Argon calibration	Corrected
Reference star calib.	HD60863_B8V
Exposure on ref star	5 x 2.19133 s
Ref star Sp. date	18.315/12/2025

## Slit position



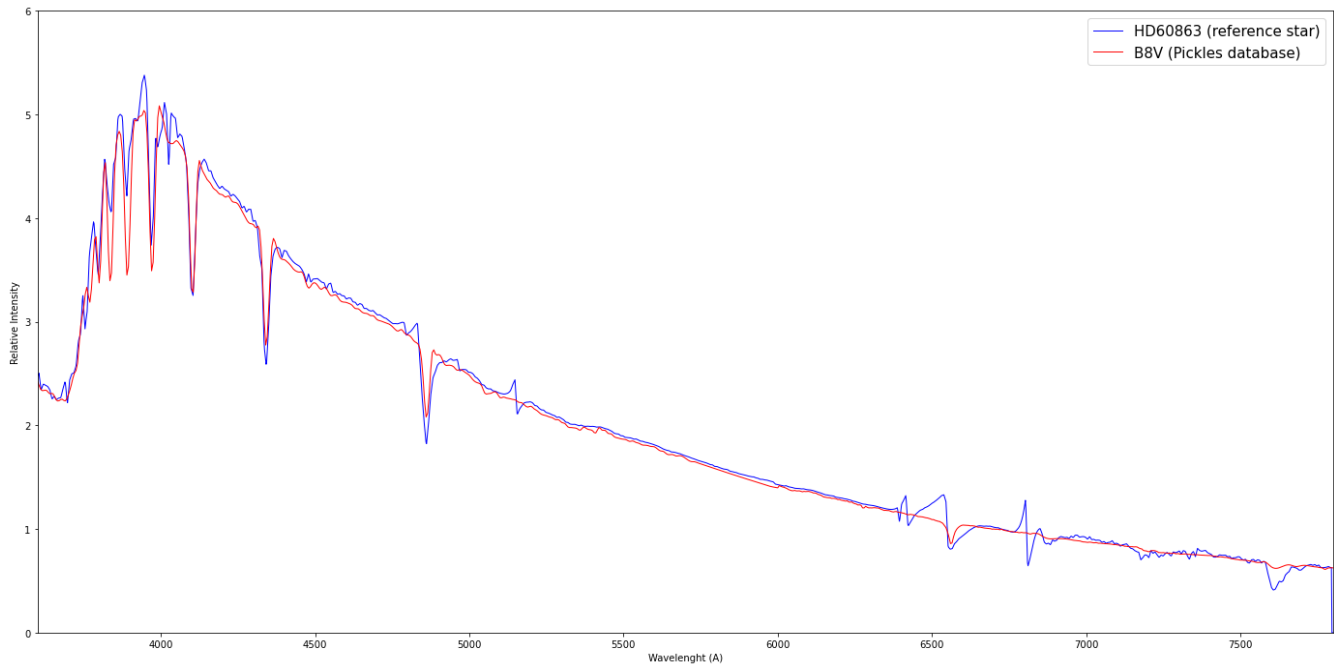
## Object picture(s)



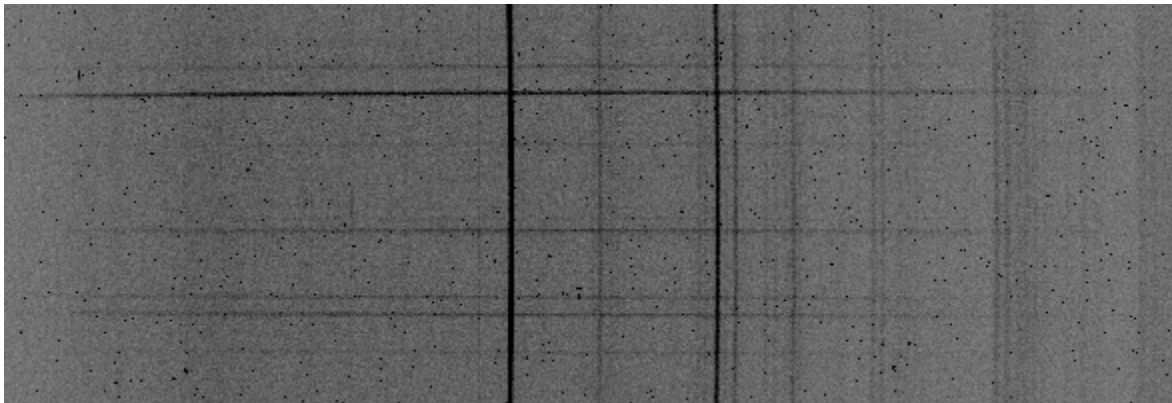


# Instrumental Response and 2D Spectra

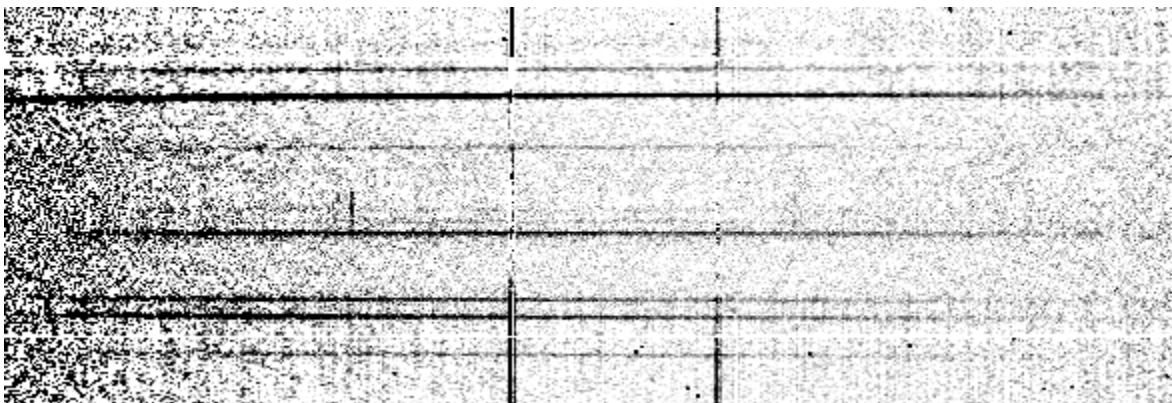
Instrumental response (red = theoretical ref star spectrum ; blue = acquired ref star spectrum with instrumental response correction applied)



## 2D Raw spectrum

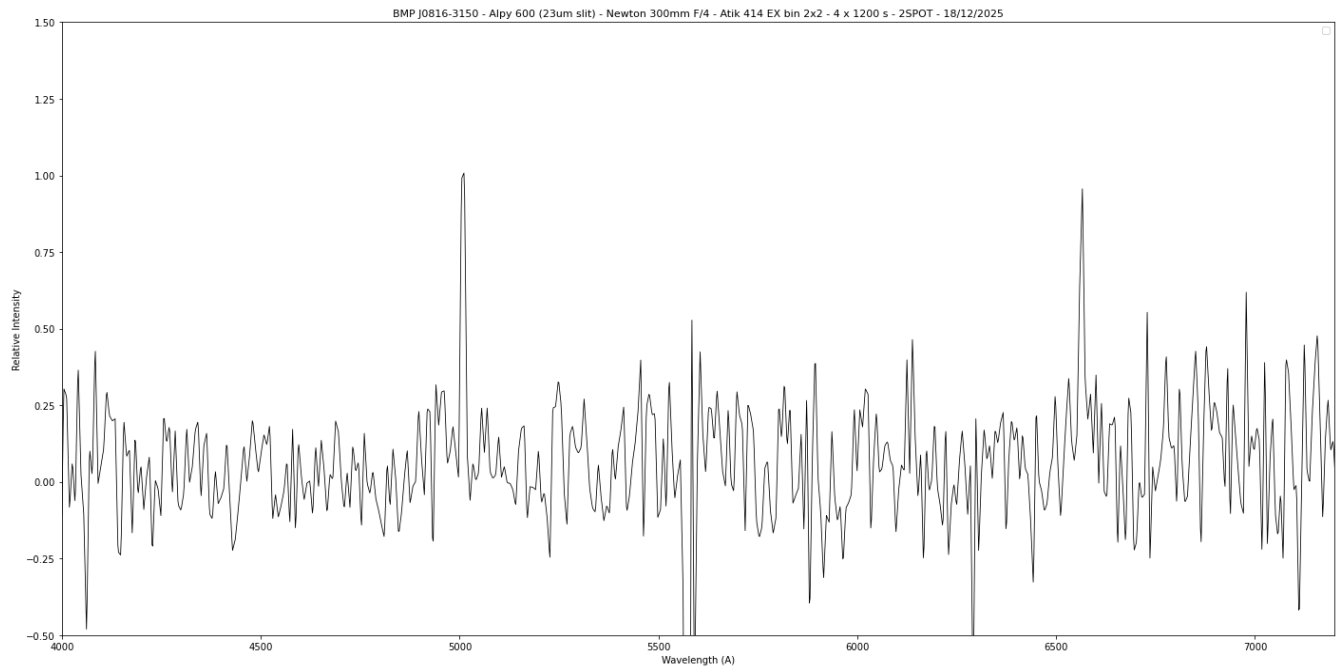


## 2D Processed spectrum





## Results



## Comments

Object already classified as Likely PN.  
[OIII](5007A) and Halpha lines detected.  
BMP J0816-3150 is certainly a true PN.