



# Spectroscopic Record Sheet



## Details on acquisitions

Object	BMP J0715-2805
Coordinates (J2000)	07:15:02.30 -28:05:43.73
Type	Likely PN

Observation date	17.114/12/2025
Weather conditions	/
Observer	2SPOT
Location	Deep Sky Chile (CL)

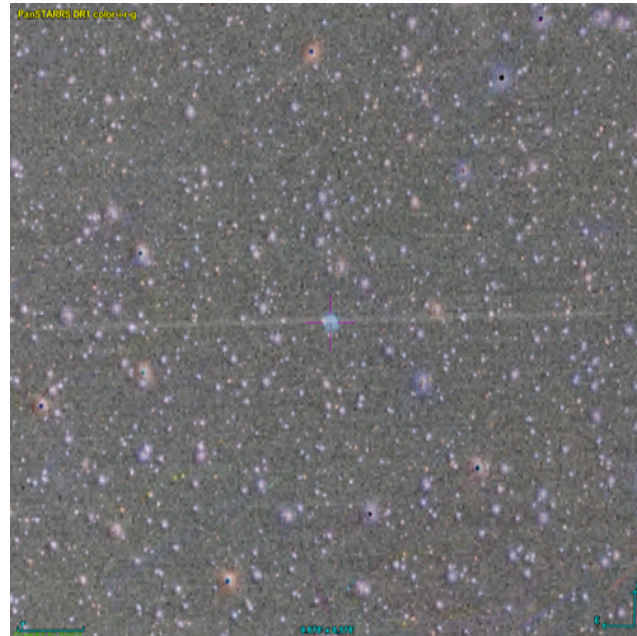
Mount	10 Micron GM3000 HPS
Telescope	Newton 300mm F/4
Spectroscope	Alpy 600 (23um slit)
Resolution (bin 1x1)	~1nm at 656 nm
Principal camera	Atik 414 EX
Dispersion (bin 1x1)	~0,3 nm/pixel at 656 nm
Cam temperature	-10°C
Binning	2x2
Guiding camera	ASI 178MM
Data acquisition Soft	Prism v11.2.3.21
Data processing soft	ISIS V6.1.1

Exposure on object	6 x 1200 s
Master Dark	Corrected
Master Flat	Corrected
Master Offset	Corrected
Neon-Argon calibration	Corrected
Reference star calib.	HD46936_B8V
Exposure on ref star	5 x 4.89358 s
Ref star Sp. date	17.159/12/2025



## Slit position and images

### Slit position

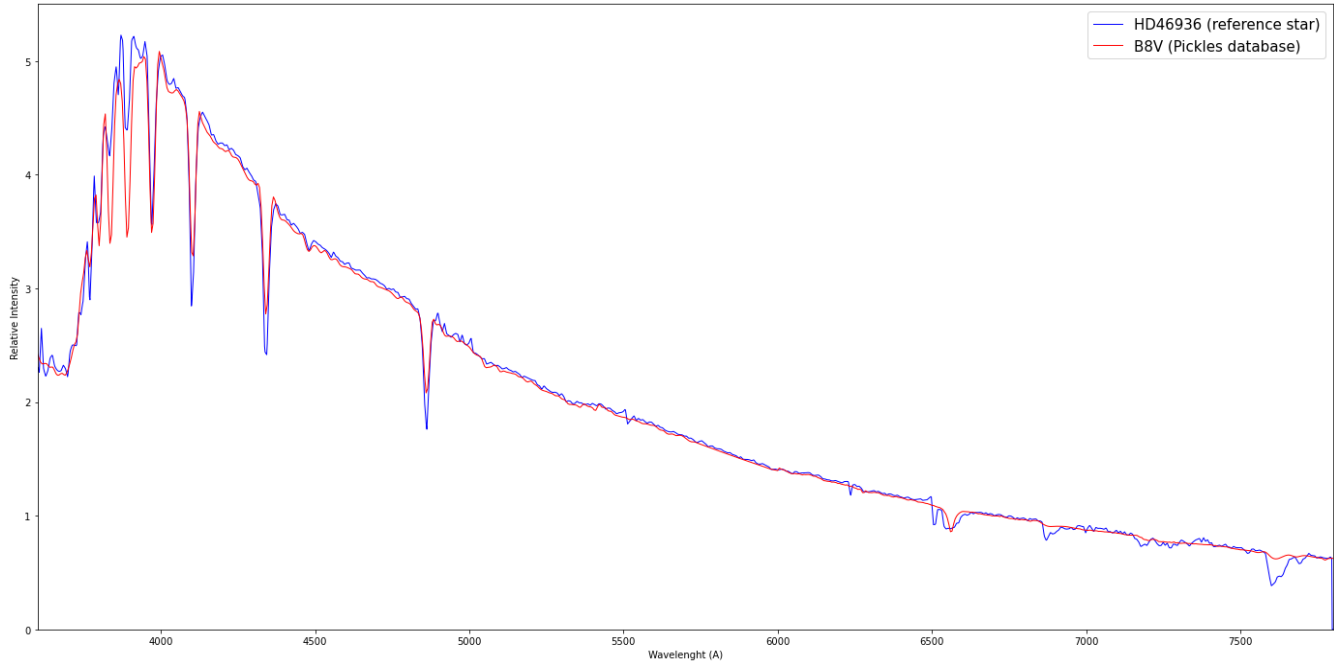


### Object picture(s)

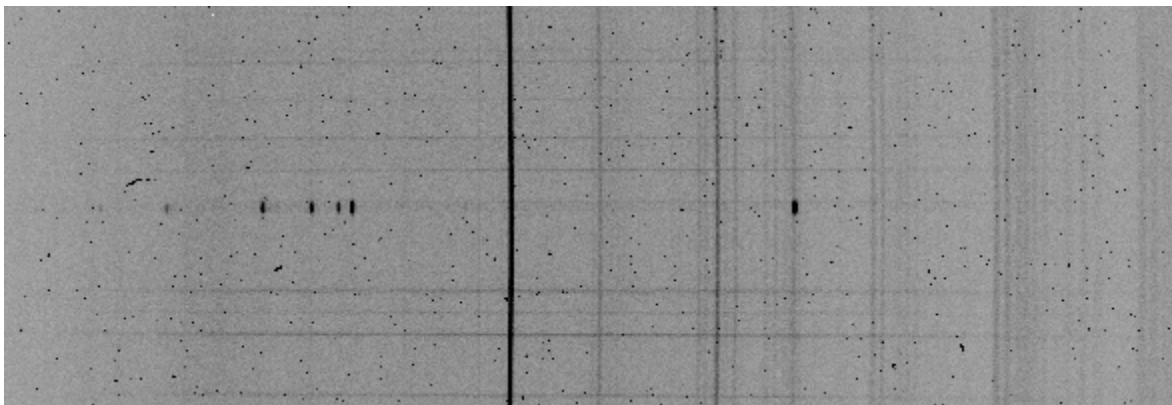


# Instrumental Response and 2D Spectra

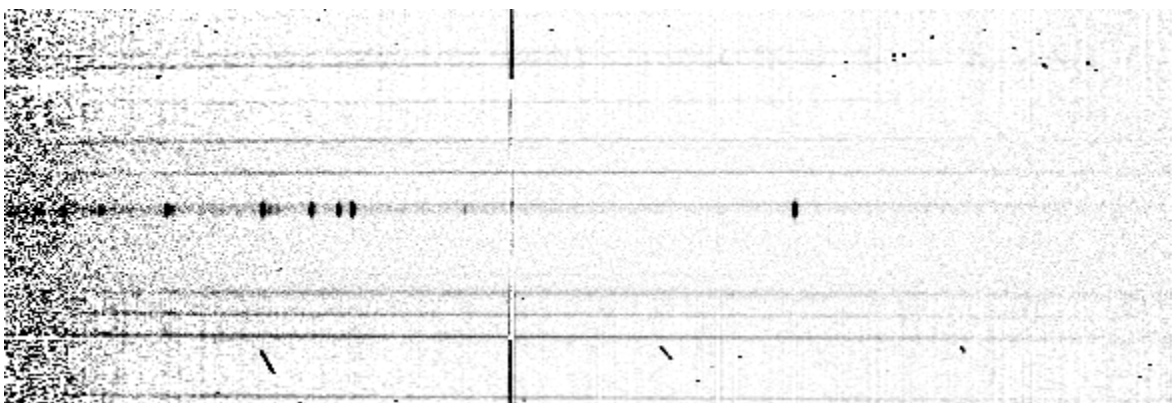
Instrumental response (red = theoretical ref star spectrum ; blue = acquired ref star spectrum with instrumental response correction applied)

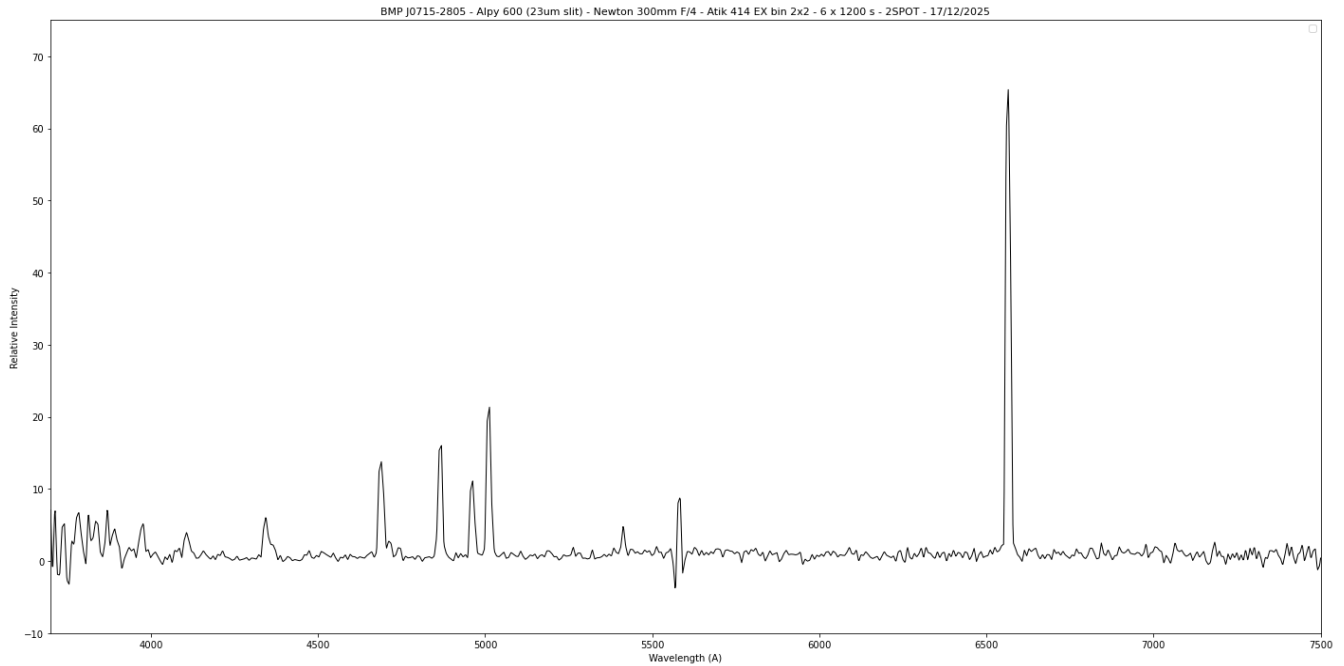


## 2D Raw spectrum



## 2D Processed spectrum





## Comments

Object already classified as Likely PN.

[NeIII], Hdelta, Hgamma, strong HeII(4686Å), Hbeta, [OIII], HeII(5412Å) and Halpha lines detected.

BMP J0715-2805 could be a PN with very high excitation (strong 4686 HeII line and absence of [NII] and [SII] lines)