



# Spectroscopic Record Sheet



## Details on acquisitions

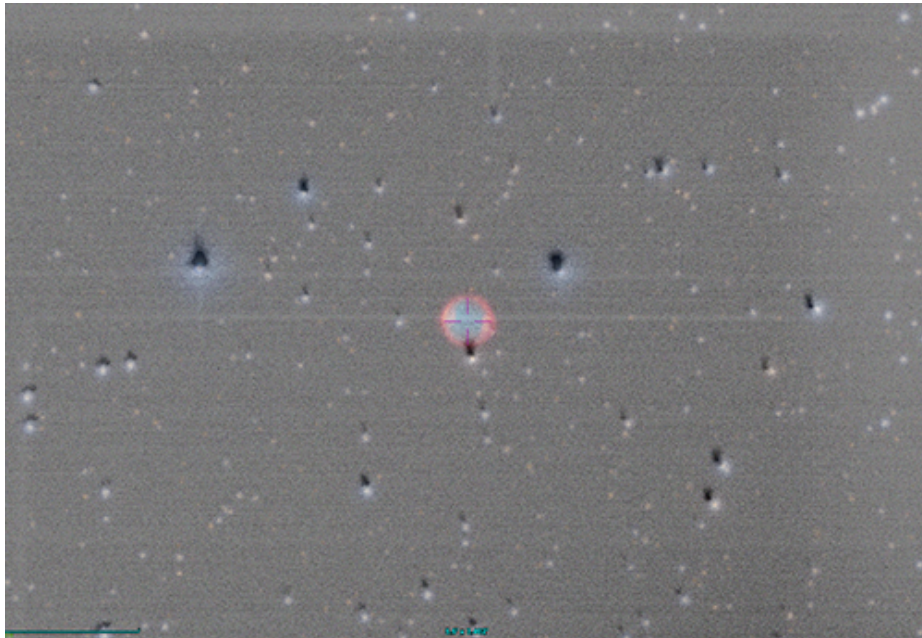
Object	StDr 166
Coordinates (J2000)	20:31:54.30 +51:54:08.66
Type	New candidate

Observation date	2.798/11/2022
Weather conditions	Temp: 10°C Hygro: 74%
Observer	2SPOT
Location	OCA Calern

Mount	C2PU
Telescope	C2PU Epsilon 1040/5720
Spectroscope	LISA (50um slit)
Resolution (bin 1x1)	~1nm at 656 nm
Principal camera	Atik 414 EX
Dispersion (bin 1x1)	~0,3 nm/pixel at 656 nm
Cam temperature	-10°C
Binning	1x1
Guiding camera	ASI 290MM
Data acquisition Soft	Prism v
Data processing soft	ISIS V6.1.1

Exposure on object	7 x 1200 s
Master Dark	Corrected
Master Flat	Corrected
Master Offset	Corrected
Neon-Argon calibration	Corrected
Reference star calib.	HD205314_A0V
Exposure on ref star	10 x 10 s
Ref star Sp. date	2.869/11/2022

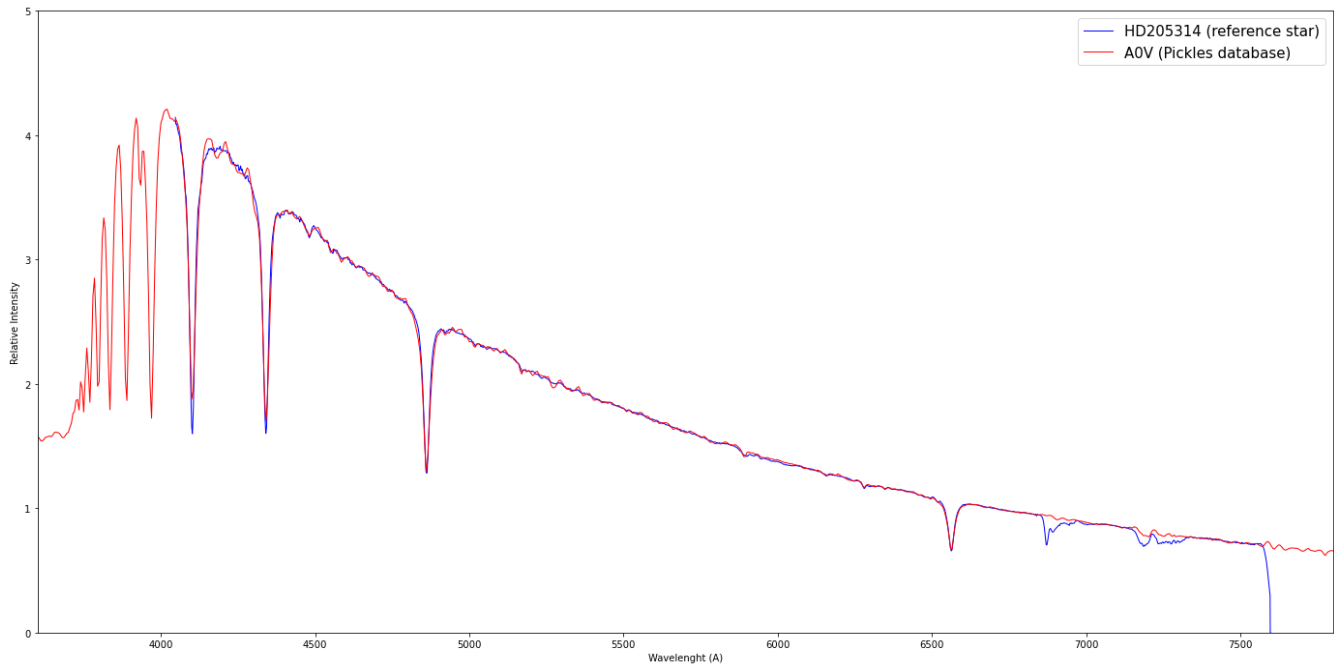
Slit position



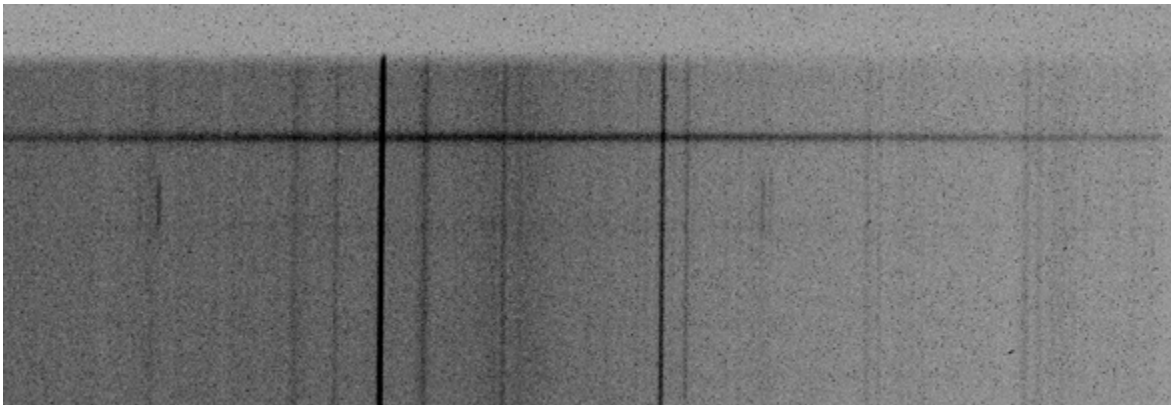
Object picture(s)



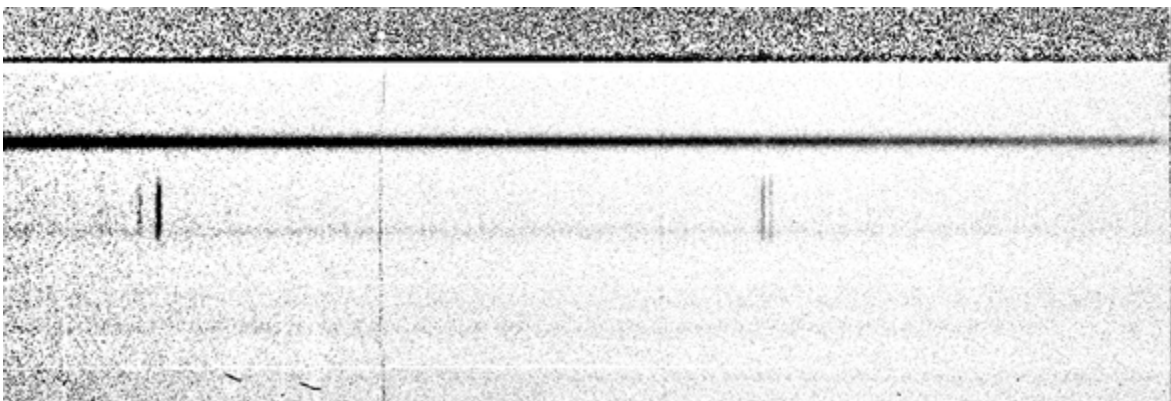
Instrumental response (red = theoretical ref star spectrum ; blue = acquired ref star spectrum with instrumental response correction applied)

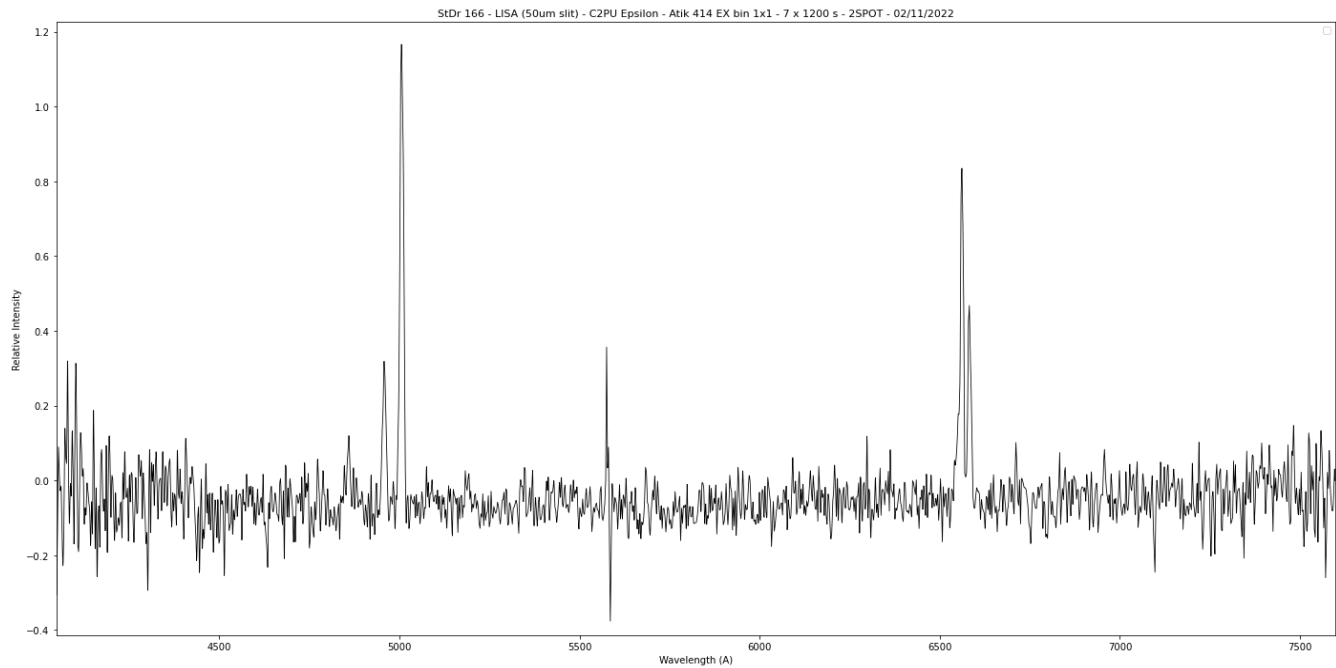


2D Raw spectrum (5x1200s)



2D Processed spectrum





## Comments

Hbeta, [OIII], Halpha, [NII] and [SII] lines detected.  
Object with PN characteristics.