



Spectroscopic Record Sheet



Details on acquisitions

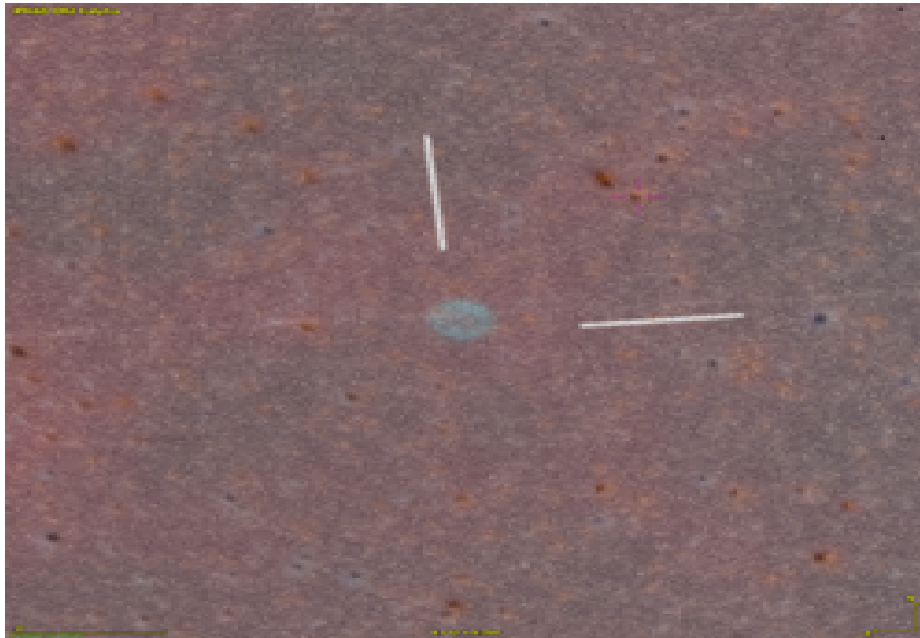
Object	StDr 160
Coordinates (J2000)	19:11:07.75 +03:32:59.27
Type	New candidate

Observation date	16.019/10/2022
Weather conditions	/
Observer	2SPOT
Location	Deep Sky Chile (CL)

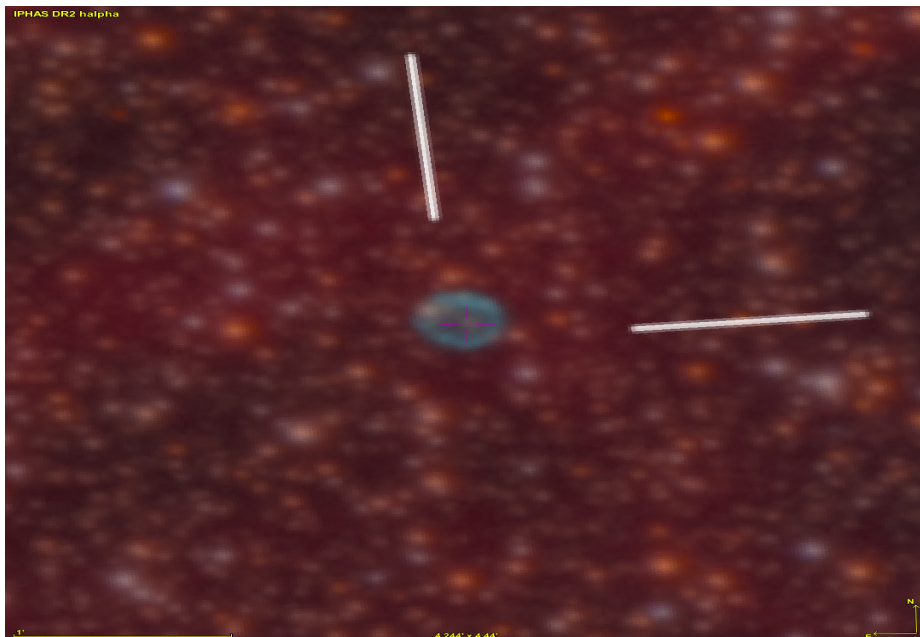
Mount	10 Micron GM3000 HPS
Telescope	Ritchey-Chrétien RC12
Spectroscope	Alpy 600 (23um slit)
Resolution (bin 1x1)	~1nm at 656 nm
Principal camera	Atik 414 EX
Dispersion (bin 1x1)	~0,3 nm/pixel at 656 nm
Cam temperature	-10°C
Binning	2x2
Guiding camera	Atik 314L+
Data acquisition Soft	Prism v10.4.12.911
Data processing soft	ISIS V6.1.1

Exposure on object	19 x 1200 s
Master Dark	Corrected
Master Flat	Corrected
Master Offset	Corrected
Neon-Argon calibration	Corrected
Reference star calib.	HD198069_A0V
Exposure on ref star	14 x 20 s
Ref star Sp. date	15.109/10/2022

Slit position

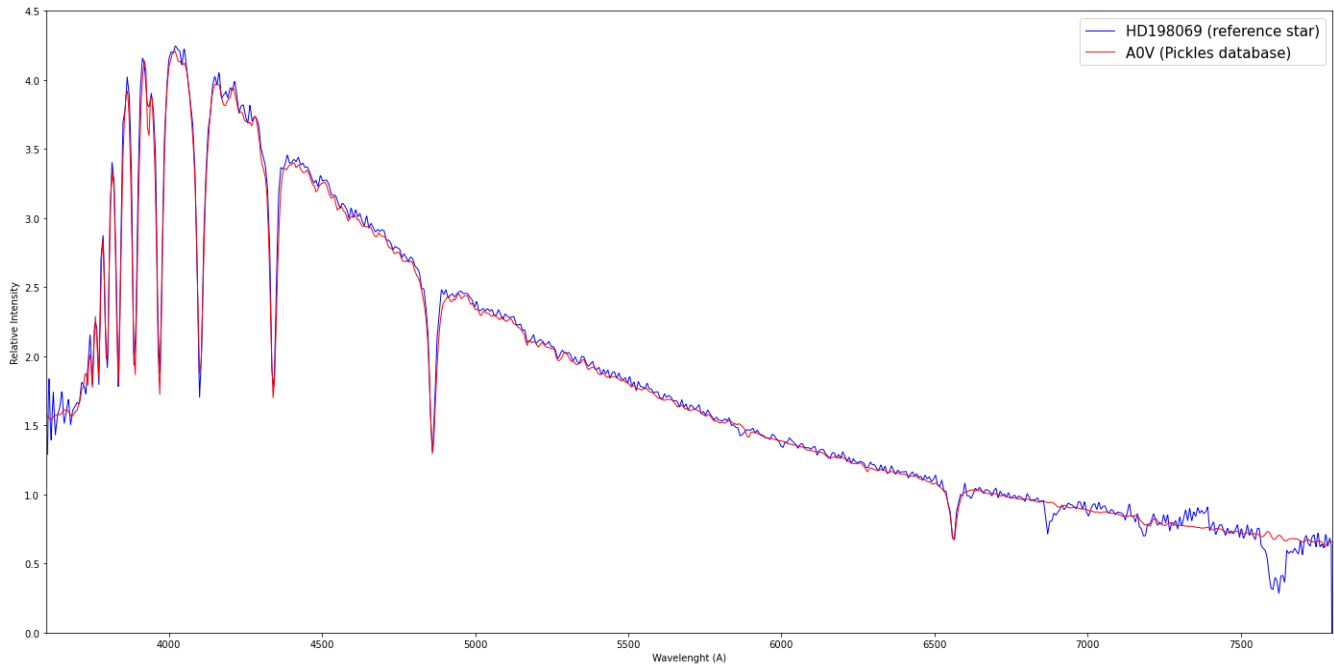


Object picture(s)



Instrumental Response and 2D Spectrum

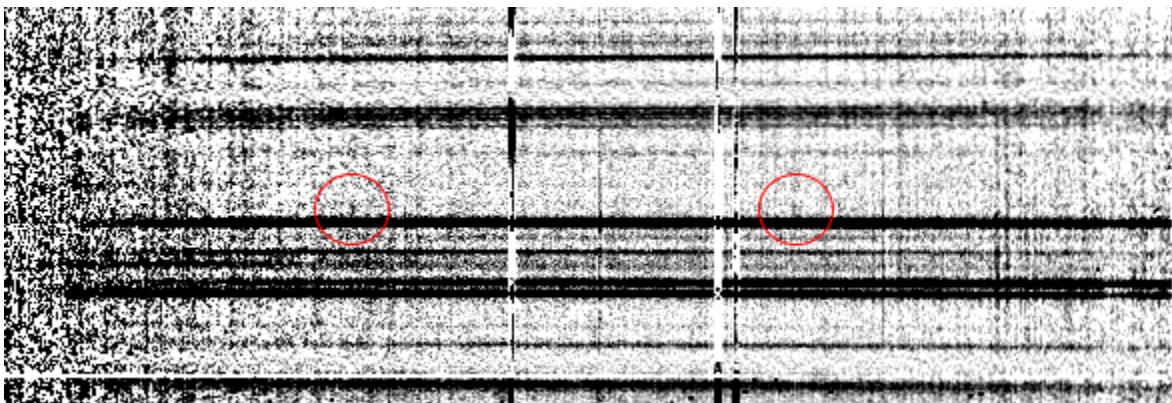
Instrumental response (red = theoretical ref star spectrum ; blue = acquired ref star spectrum with instrumental response correction applied)

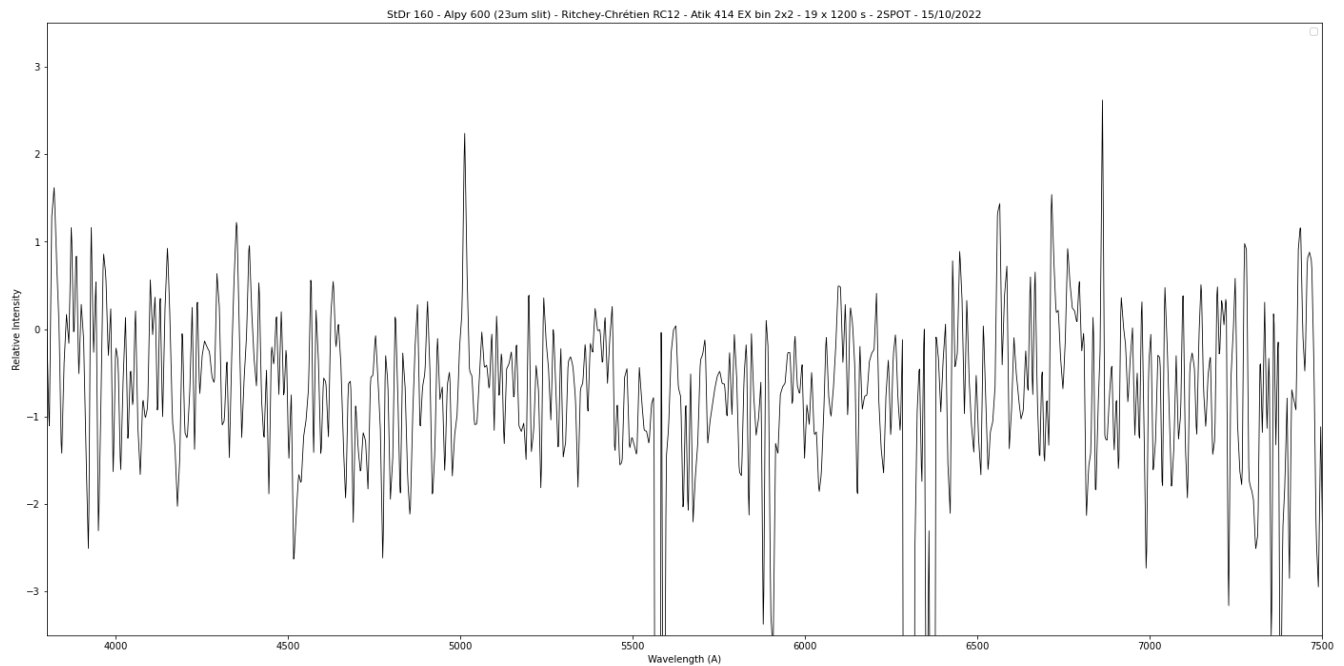


2D Raw spectrum (5x1200s)



2D Processed spectrum





Comments

[OIII](5007) and Halpha lines detected.

The [SII](6716) line also seems to be present.

The StDr 160 signal is very weak but confirmed especially in the [OIII] line.

It is probably a true NP.