



# Spectroscopic Record Sheet



## Details on acquisitions

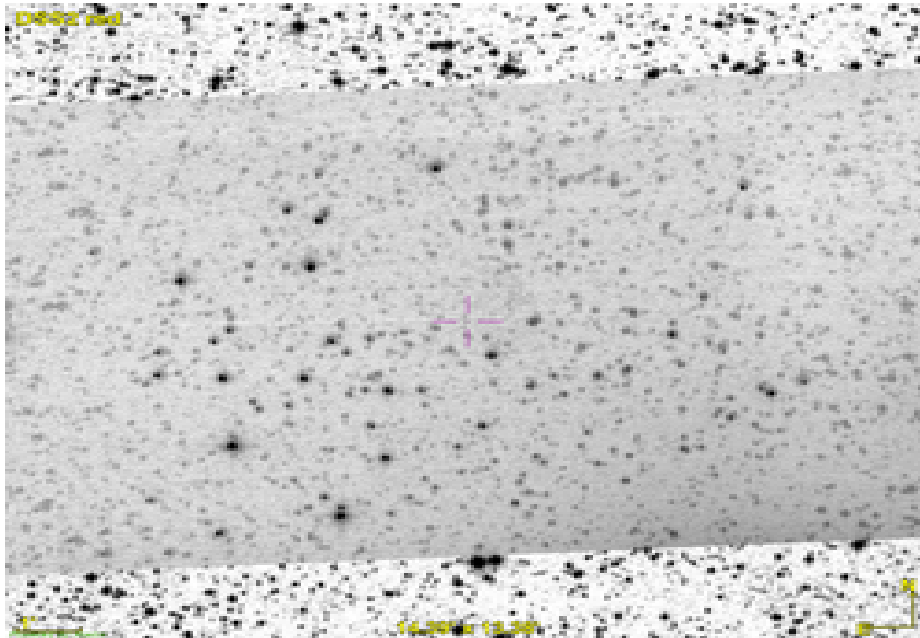
Object	StDr 159
Coordinates (J2000)	20:21:41.34 +50:18:30.51
Type	

Observation date	27.921/07/2022
Weather conditions	/
Observer	2SPOT
Location	OHP (FR)

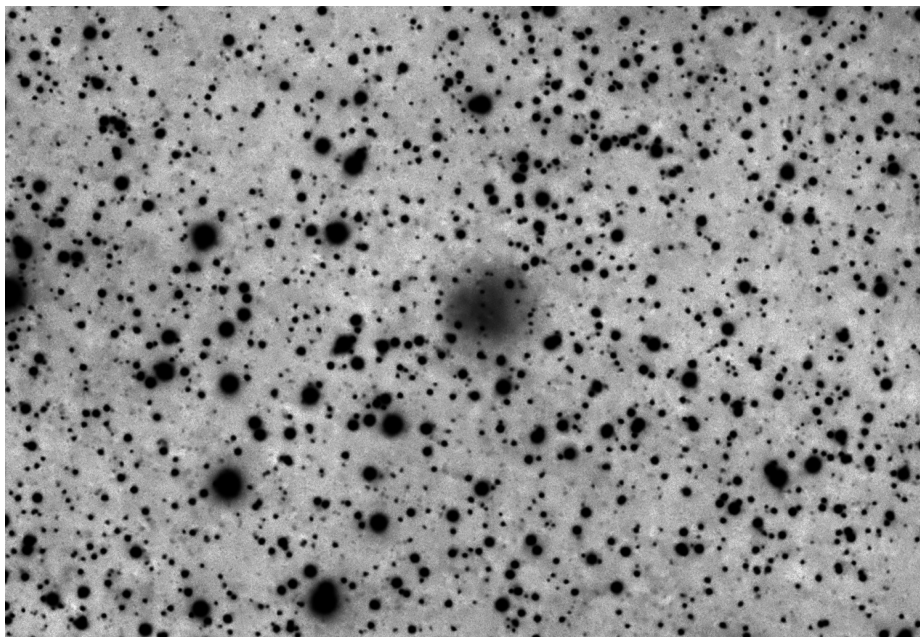
Mount	10 Micron GM2000 HPS
Telescope	Celestron C14
Spectroscope	LISA (35um slit)
Resolution (bin 1x1)	~1nm at 656 nm
Principal camera	Atik 414 EX
Dispersion (bin 1x1)	~0,3 nm/pixel at 656 nm
Cam temperature	-10°C
Binning	2x2
Guiding camera	ASI 290MM
Data acquisition Soft	Prism v10.4.12.911
Data processing soft	ISIS V6.1.1

Exposure on object	8 x 1200 s
Master Dark	Corrected
Master Flat	Corrected
Master Offset	Corrected
Neon-Argon calibration	Corrected
Reference star calib.	HD184006_A5V
Exposure on ref star	14 x 2 s
Ref star Sp. date	27.986/07/2022

Slit position

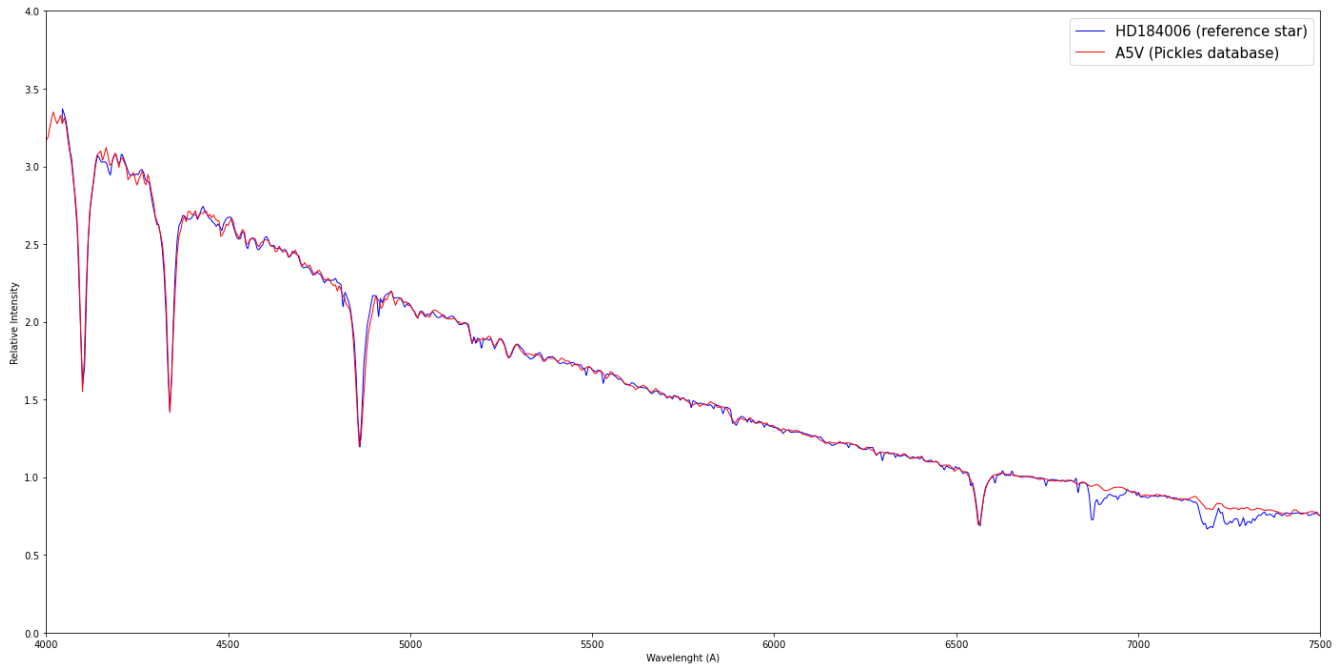


Object picture(s)

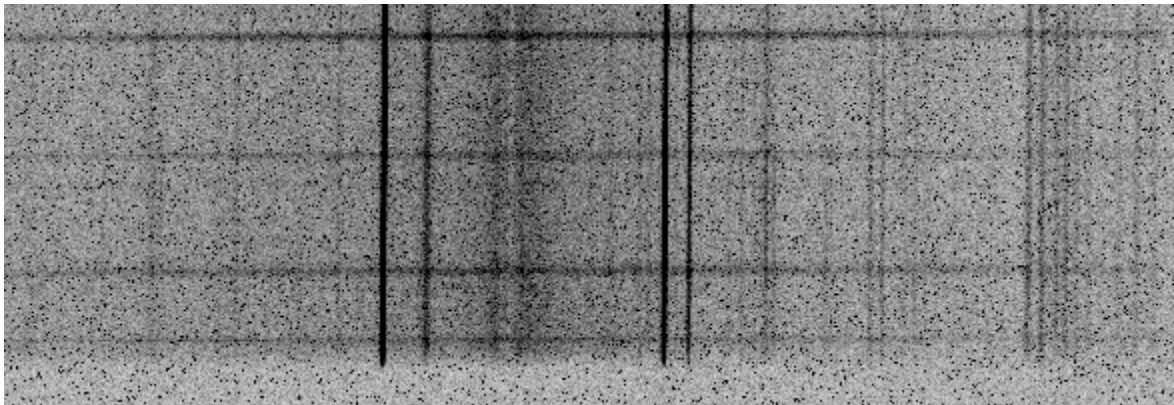


# Instrumental Response and 2D Spectrum

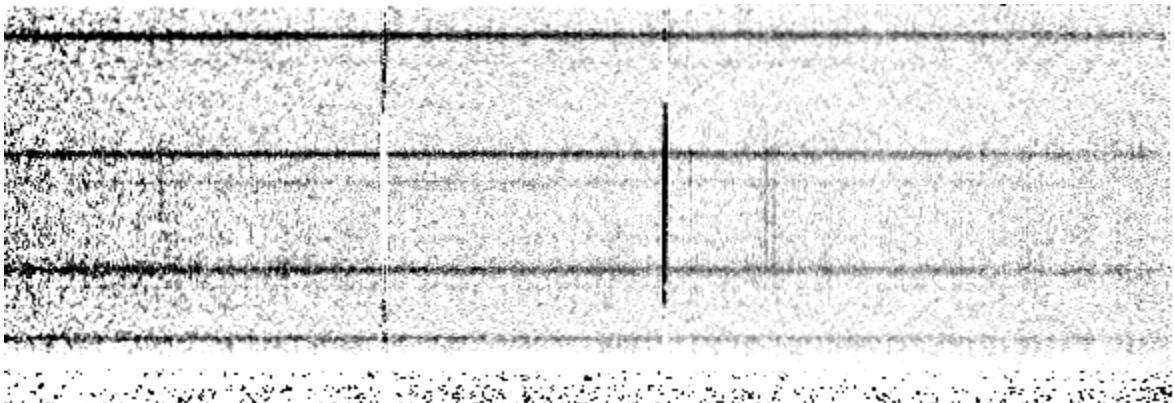
Instrumental response (red = theoretical ref star spectrum ; blue = acquired ref star spectrum with instrumental response correction applied)

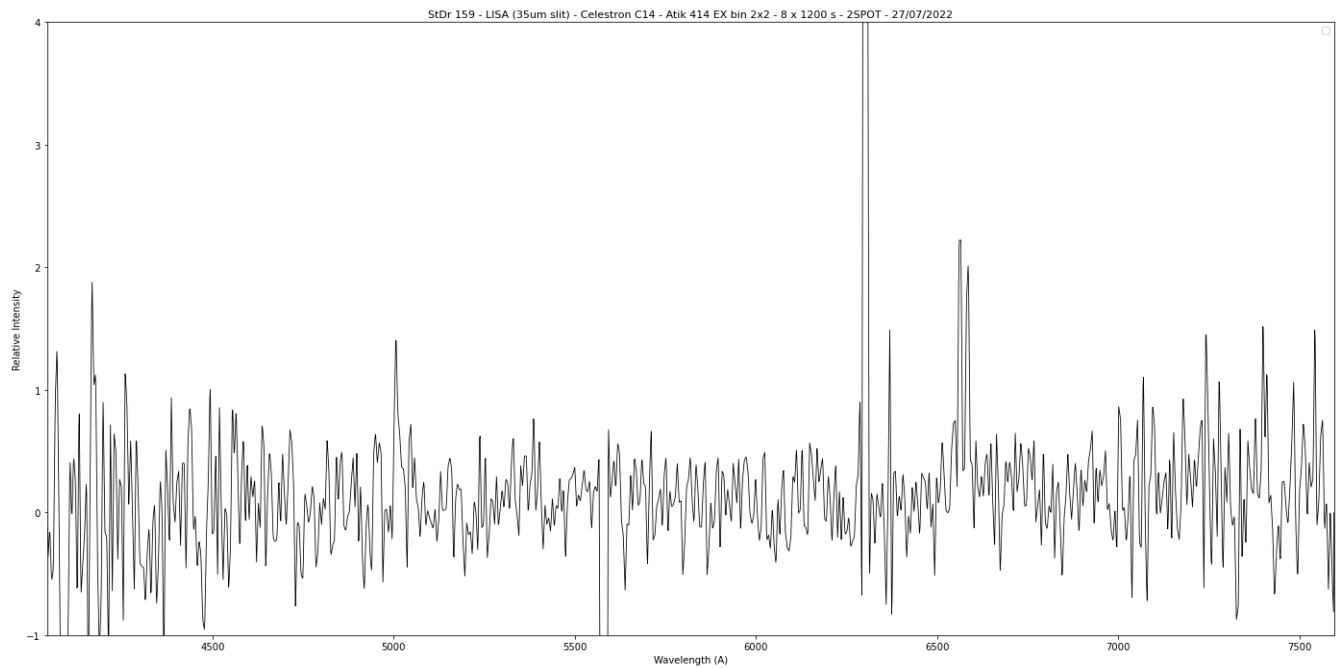


## 2D Raw spectrum



## 2D Processed spectrum





## Comments

[OIII](5007A), Halpha and [NII] lines detected.

The signal of StDr 159 is really weak but it is probably a true PN.