



Spectroscopic Record Sheet



Details on acquisitions

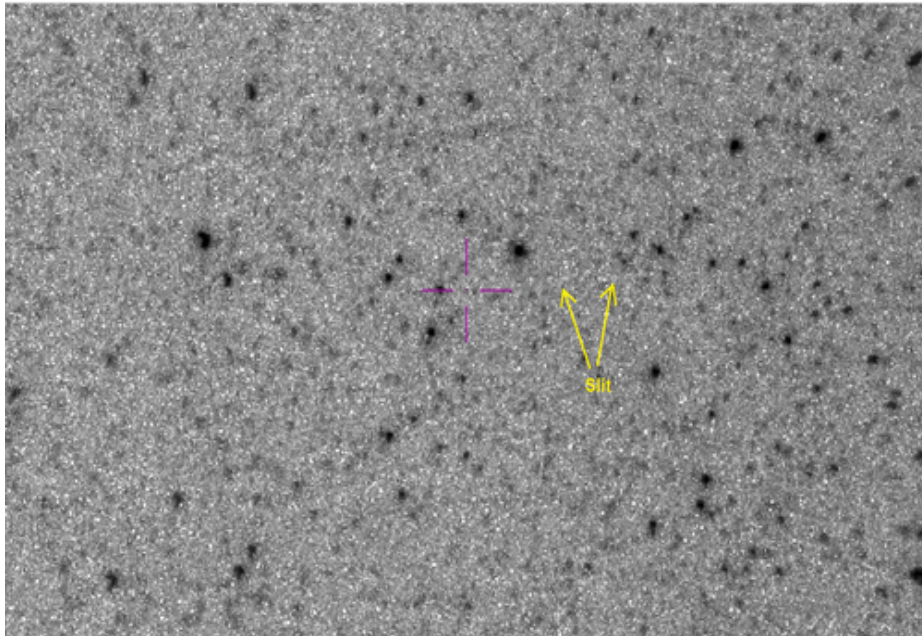
Object	SI 1
Coordinates (J2000)	14:30:37.33 -58:09:40.00
Type	/

Observation date	1.209/03/2022
Weather conditions	/
Observer	2SPOT
Location	Deep Sky Chile (CL)

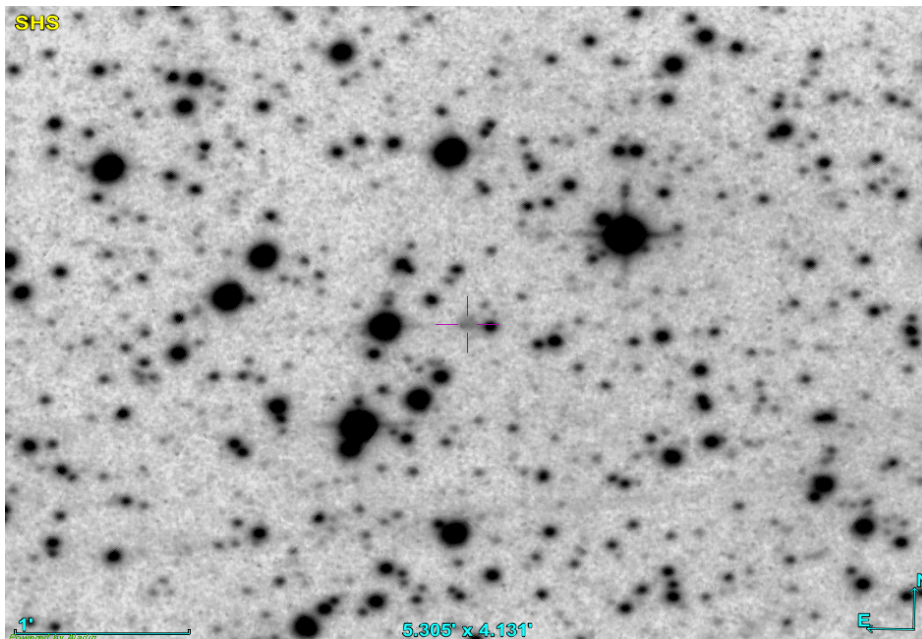
Mount	10 Micron GM3000 HPS
Telescope	Ritchey-Chrétien RC12
Spectroscope	Alpy 600 (23um slit)
Resolution (bin 1x1)	~1 Å at I656 nm
Principal camera	Atik 414 EX
Dispersion (bin 1x1)	~0,3 nm/pixel at I656 nm
Cam temperature	-10°C
Binning	2x2
Guiding camera	Atik 314L+
Data acquisition Soft	Prism v10.4.12.911
Data processing soft	ISIS V6.1.1

Exposure on object	8 x 1200 s
Master Dark	Corrected
Master Flat	Corrected
Master Offset	Corrected
Neon-Argon calibration	Corrected
Reference star calib.	HD139129_A0V
Exposure on ref star	20 x 5 s
Ref star Sp. date	1.283/03/2022

Slit position



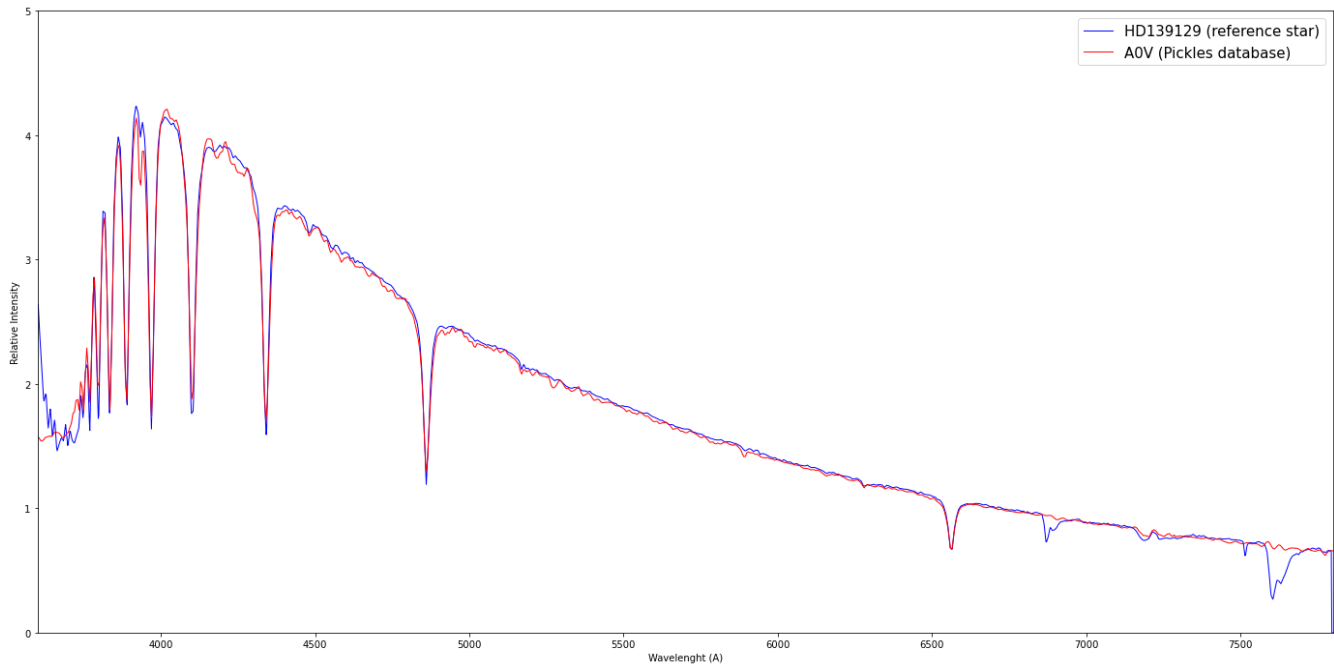
Object picture(s)



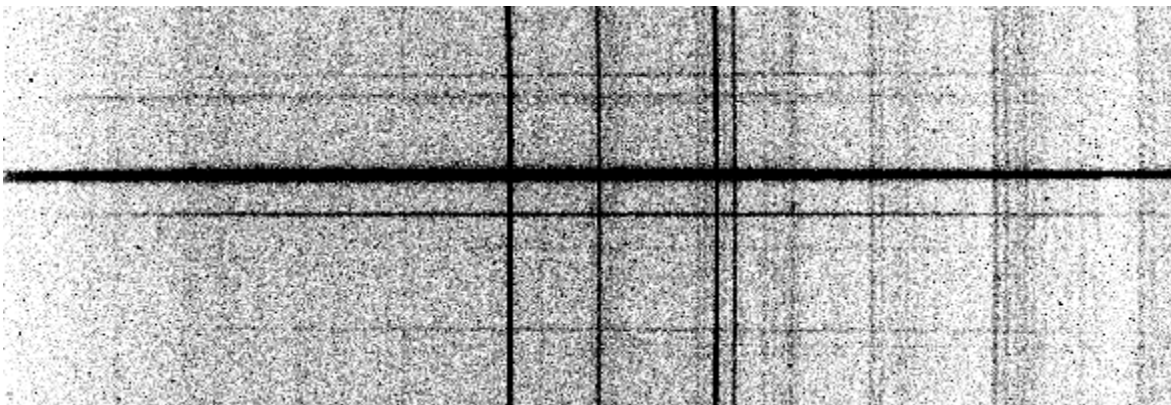


Instrumental Response and 2D Spectrum

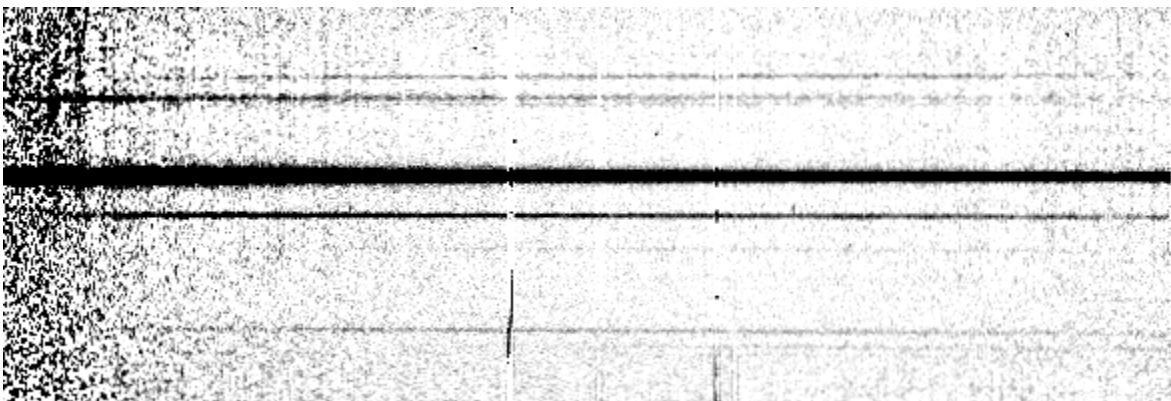
Instrumental response (red = theoretical ref star spectrum ; blue = acquired ref star spectrum with instrumental response correction applied)

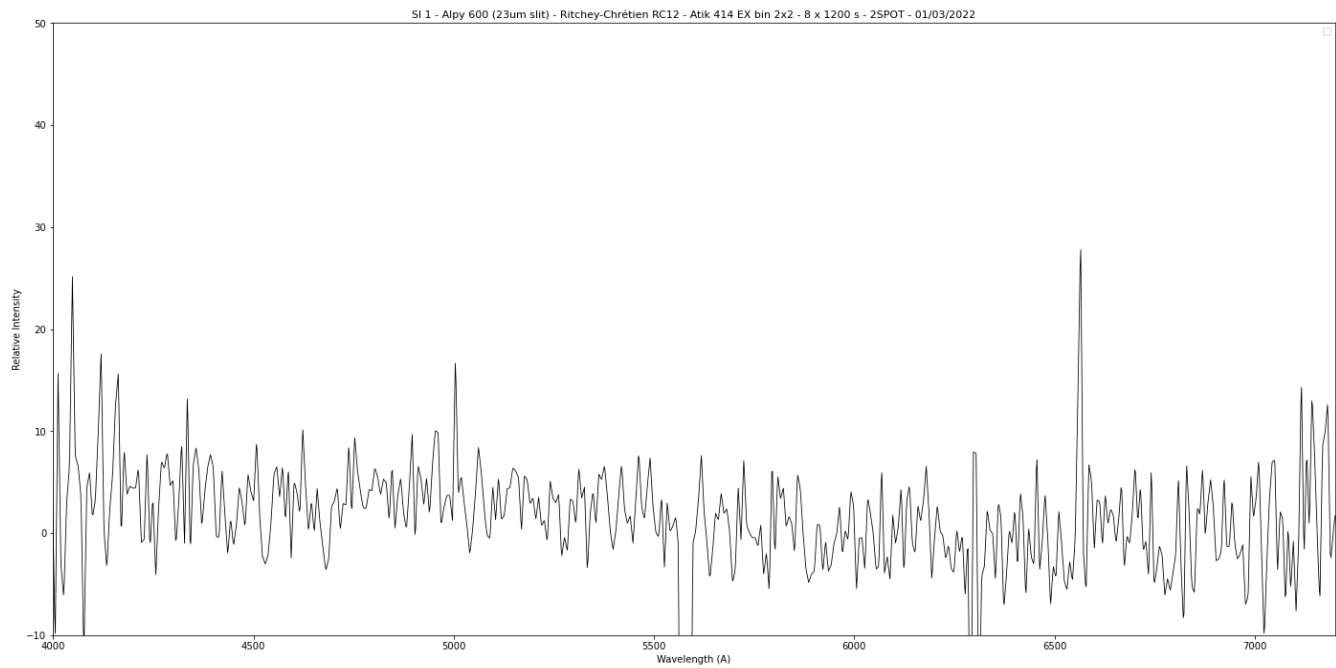


2D Raw spectrum



2D Processed spectrum





Comments

[OIII] and Halpha lines detected.

The signal of SI 1 is really weak but it is probably a true NP.