



Spectroscopic Record Sheet



Details on acquisitions

Object	MulPre 2
Coordinates (J2000)	14:52:06.55 -58:44:03.00
Type	New candidate

Observation date	9.057/06/2021
Weather conditions	/
Observer	2SPOT
Location	Deep Sky Chile (CL)

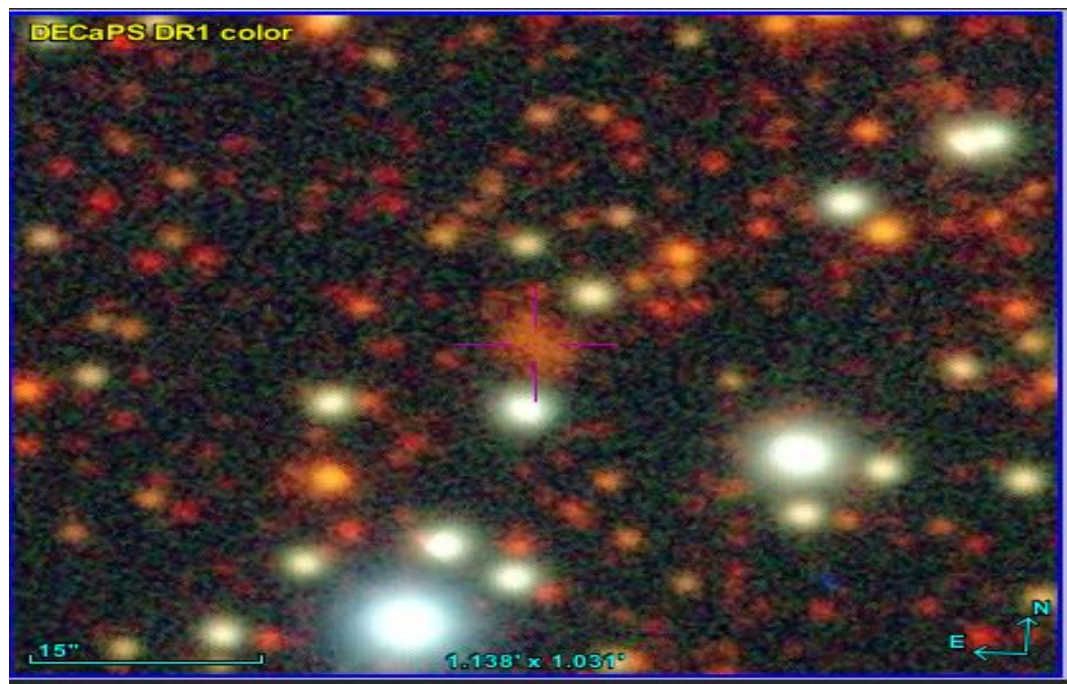
Mount	10 Micron GM3000 HPS
Telescope	Ritchey-Chrétien RC12
Spectroscope	Alpy 600 (23um slit)
Resolution (bin 1x1)	$\sim 1 \text{ \AA}$ at I656 nm
Principal camera	Atik 414 EX
Dispersion (bin 1x1)	$\sim 0,3 \text{ nm/pixel}$ at I656 nm
Cam temperature	-10°C
Binning	2x2
Guiding camera	Atik 314L+
Data acquisition Soft	Prism v10.4.12.911
Data processing soft	ISIS V6.1.1

Exposure on object	10 x 1200 s
Master Dark	Corrected
Master Flat	Corrected
Master Offset	Corrected
Neon-Argon calibration	Corrected
Reference star calib.	HD142139_A0V
Exposure on ref star	14 x 5 s
Ref star Sp. date	9.166/06/2021

Slit position



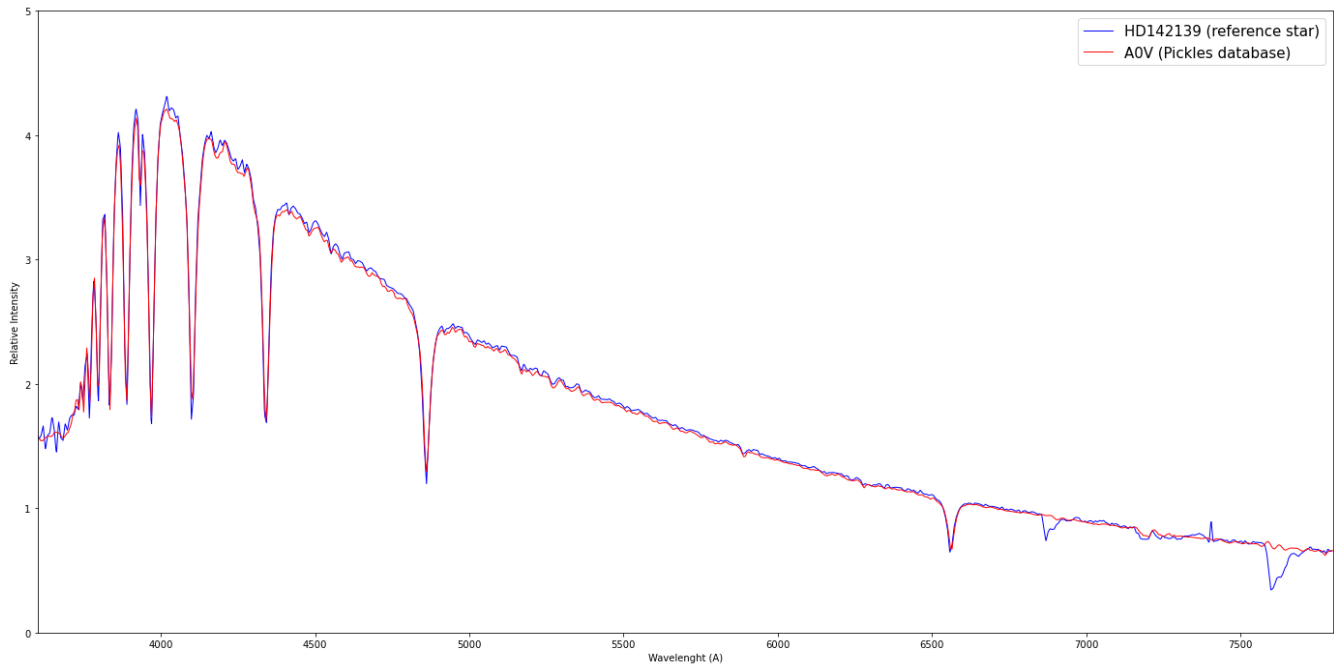
Object picture(s)



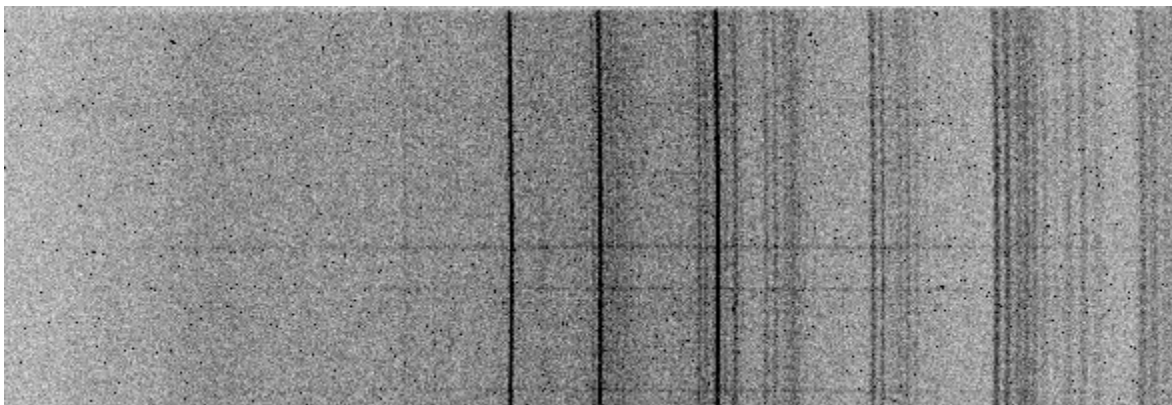


Instrumental Response and 2D Spectrum

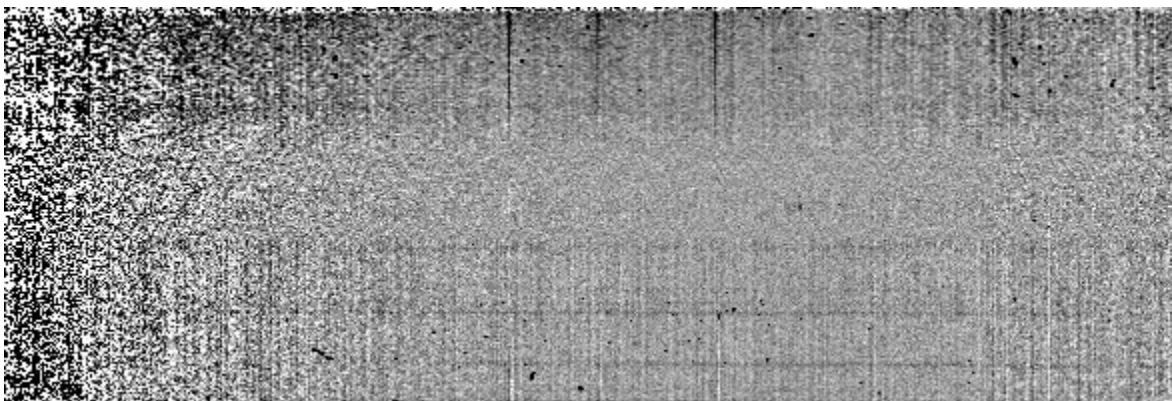
Instrumental response (red = theoretical ref star spectrum ; blue = acquired ref star spectrum with instrumental response correction applied)

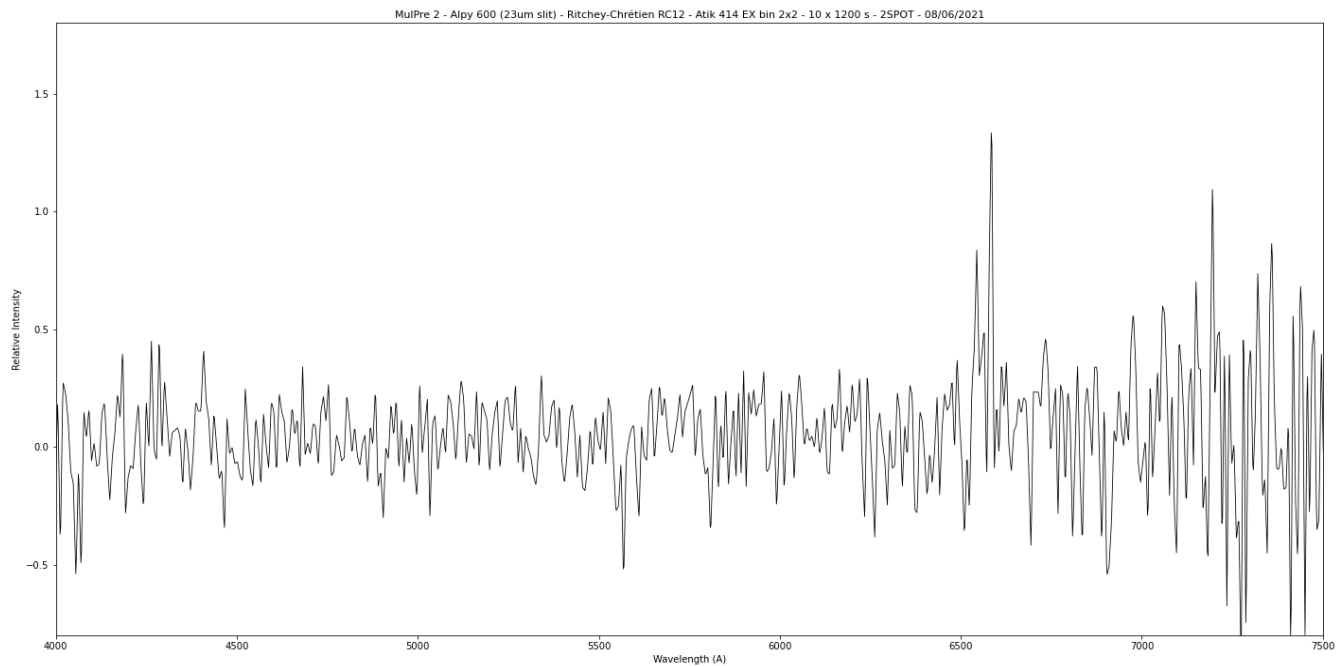


2D Raw spectrum



2D Processed spectrum





Comments

Compact source emission in SHS, strong WISE source.

Detected lines :

[N II] >> H α

Maybe weak [S II]

MuIPre2 may be a PN.