



Spectroscopic Record Sheet



Details on acquisitions

Object	MoMi 6
Coordinates (J2000)	20:04:10.07 +35:36:13.53
Type	New candidate

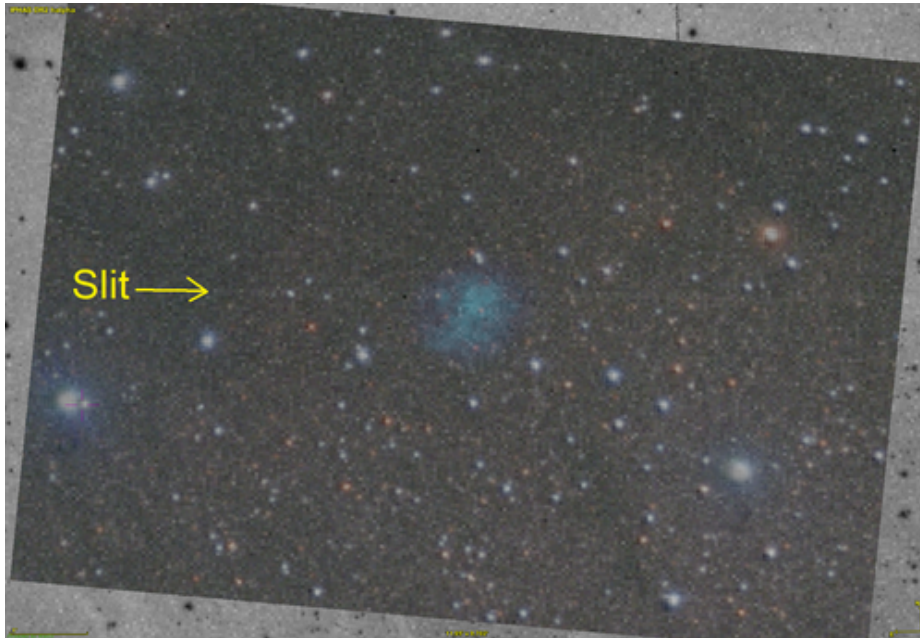
Observation date	8.877/10/2023
Weather conditions	Temp:14.8°C Hygro: 72% Patm:1024 hpa
Observer	P. Le Dû
Location	Kermerrien Observatory (Porspoder, FR)

Mount	Losmandy G11
Telescope	Newton 200mm F/5
Spectroscope	Alpy 600 (23um slit)
Resolution (bin 1x1)	~1nm at 656 nm
Principal camera	Atik 414 EX
Dispersion (bin 1x1)	~0,3 nm/pixel at 656 nm
Cam temperature	-10°C
Binning	2x2
Guiding camera	Atik 314L+
Data acquisition Soft	Prism v11.2.3.21
Data processing soft	ISIS V6.1.1

Exposure on object	8 x 1200 s
Master Dark	Corrected
Master Flat	Corrected
Master Offset	Corrected
Neon-Argon calibration	Corrected

Reference star calib.	HD222304_B9V
Exposure on ref star	14 x 6 s
Ref star Sp. date	9.148/10/2023

Slit position



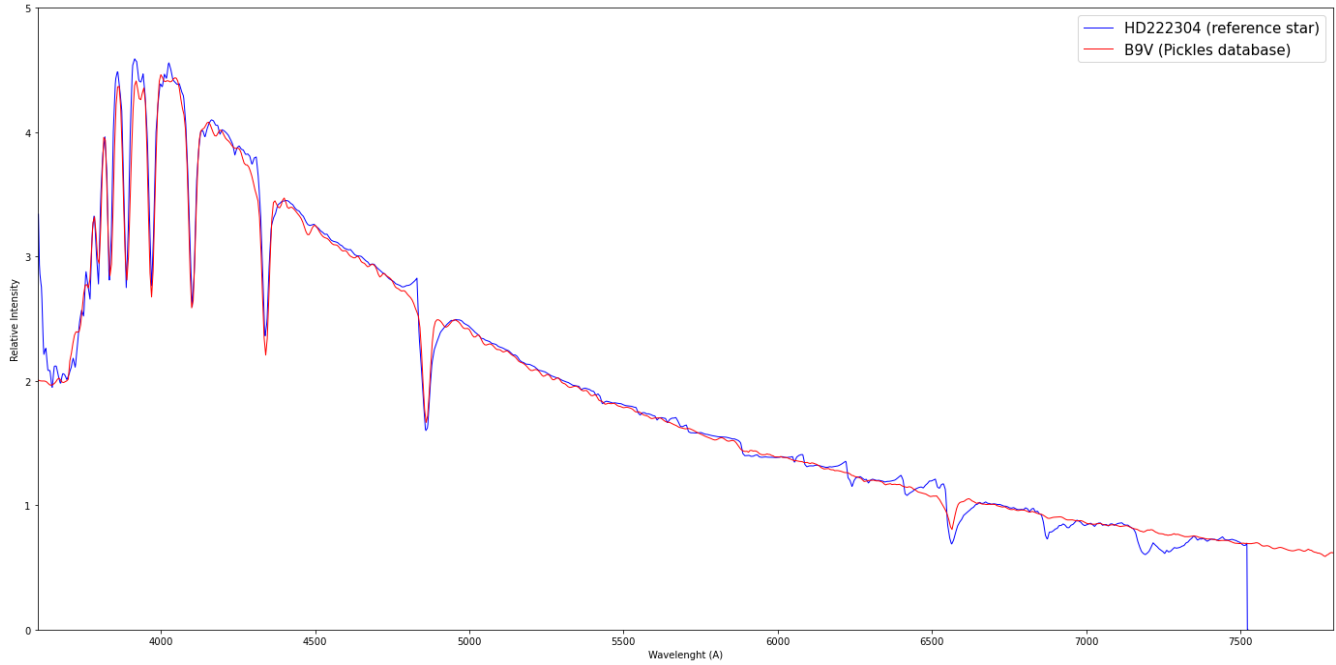
Object picture(s)



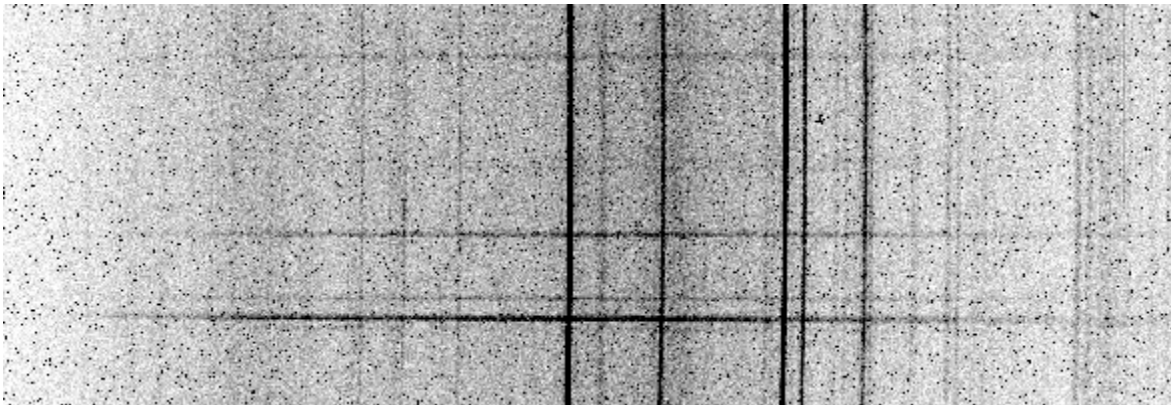


Instrumental Response and 2D Spectra

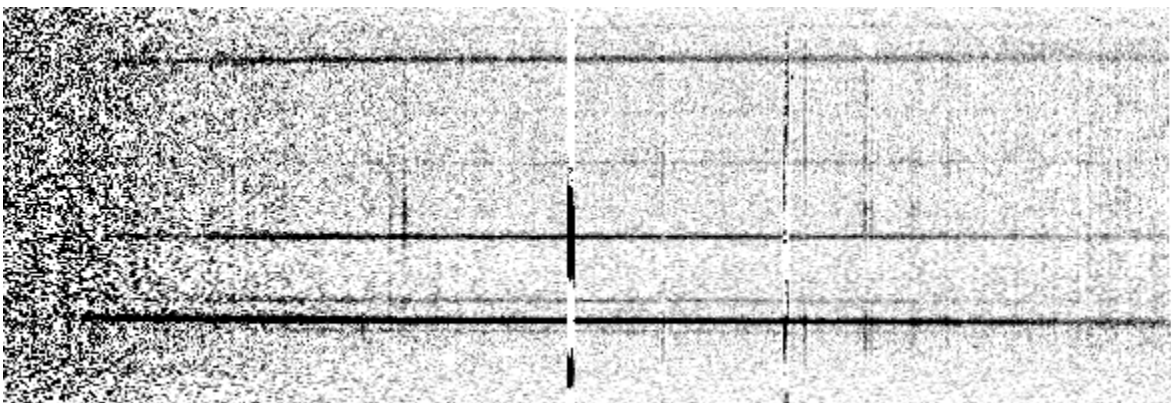
Instrumental response (red = theoretical ref star spectrum ; blue = acquired ref star spectrum with instrumental response correction applied)



2D Raw spectrum

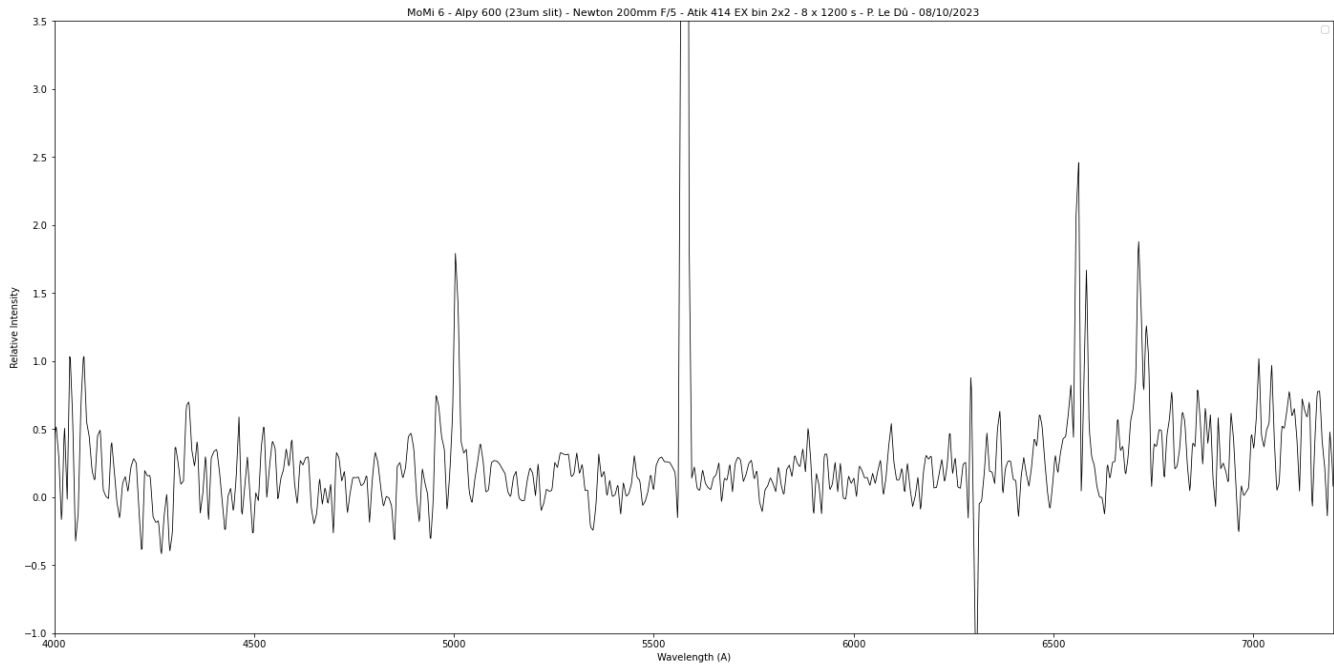


2D Processed spectrum





Results



Comments

[OIII], Halpha, [NII], [SII] lines detected.

The object's signal appears to be quite extended, particularly in the red (see the reduced 2D spectrum).