



Spectroscopic Record Sheet



Details on acquisitions

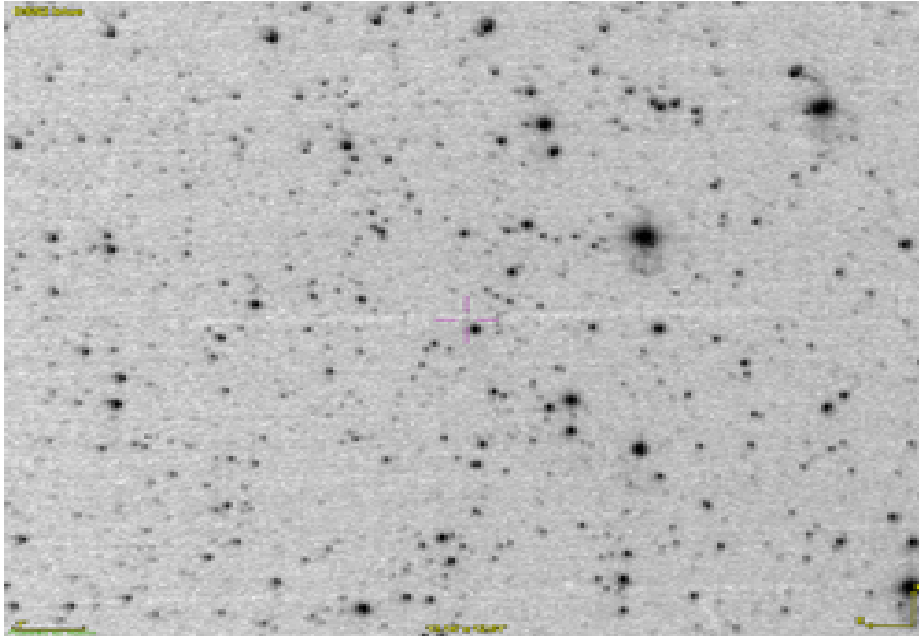
Object	Dr 3
Coordinates (J2000)	08:11:58.34 -29:56:41.39
Type	New candidate

Observation date	16.237/12/2023
Weather conditions	/
Observer	2SPOT
Location	Deep Sky Chile (CL)

Mount	10 Micron GM3000 HPS
Telescope	Ritchey-Chrétien RC12
Spectroscope	Alpy 600 (23um slit)
Resolution (bin 1x1)	~1nm at 656 nm
Principal camera	Atik 414 EX
Dispersion (bin 1x1)	~0,3 nm/pixel at 656 nm
Cam temperature	-10°C
Binning	2x2
Guiding camera	Atik 314L+
Data acquisition Soft	Prism v11.2.3.21
Data processing soft	ISIS V6.1.1

Exposure on object	8 x 1200 s
Master Dark	Corrected
Master Flat	Corrected
Master Offset	Corrected
Neon-Argon calibration	Corrected
Reference star calib.	HD73495_A0V
Exposure on ref star	14 x 8 s
Ref star Sp. date	16.309/12/2023

Slit position



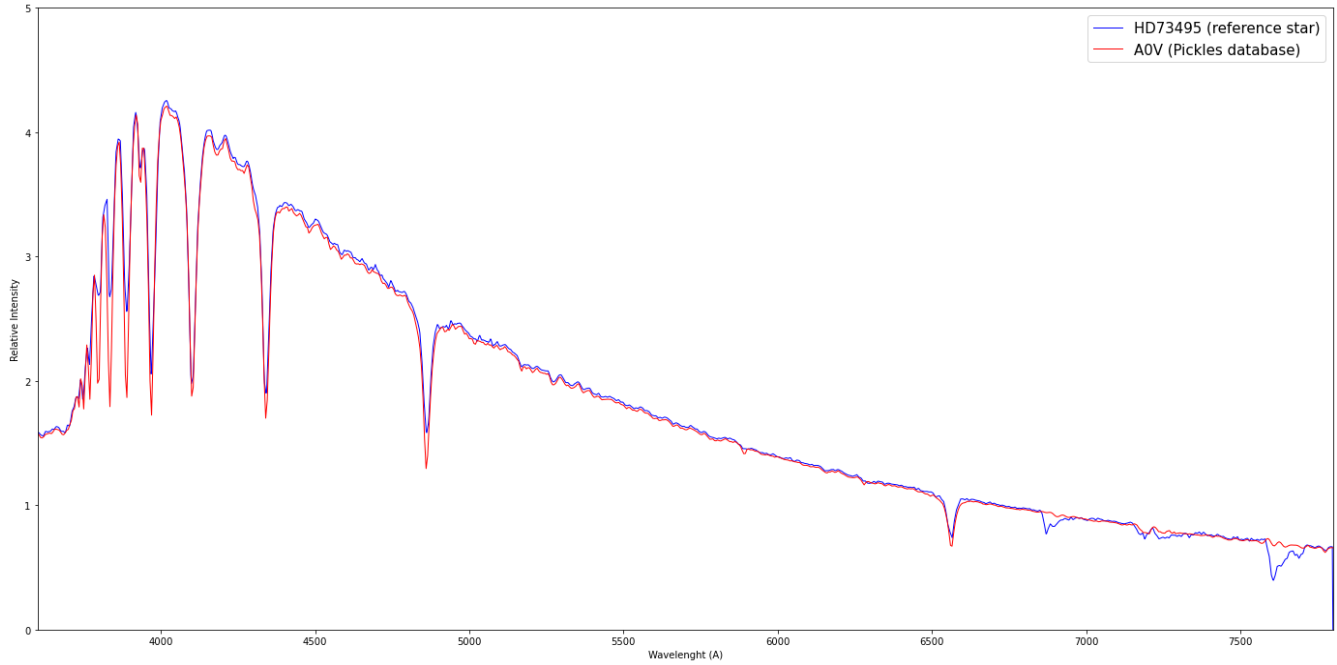
Object picture(s)



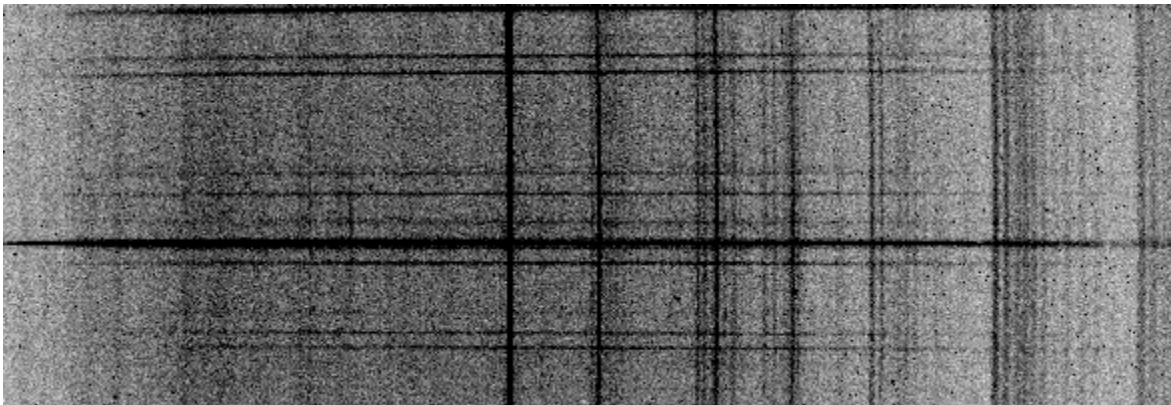


Instrumental Response and 2D Spectra

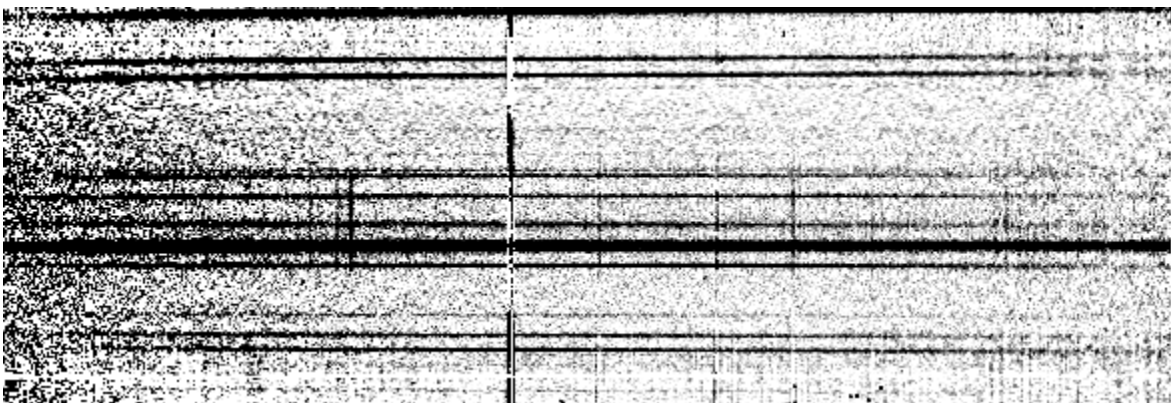
Instrumental response (red = theoretical ref star spectrum ; blue = acquired ref star spectrum with instrumental response correction applied)



2D Raw spectrum

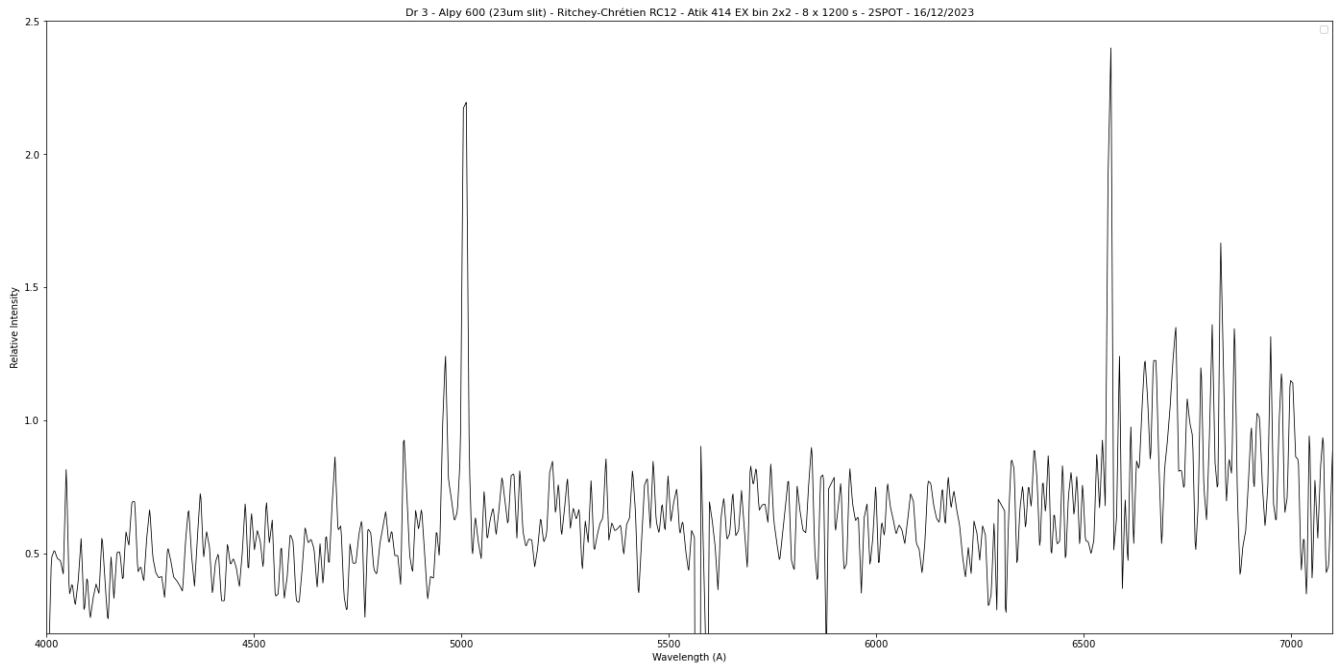


2D Processed spectrum





Results



Comments

[HeII](4686Å), Hbeta, [OIII], and Halpha lines detected.
Dr 3 is certainly a true PN.