



# Spectroscopic Record Sheet



## Details on acquisitions

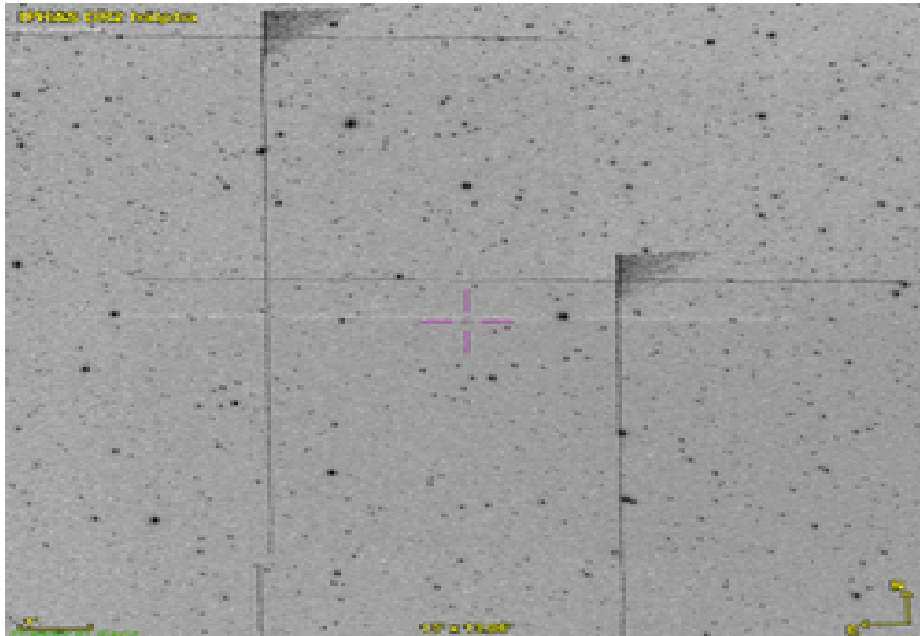
Object	Br 7
Coordinates (J2000)	21:17:42.40 +47:41:38.10
Type	/

Observation date	23.009/08/2023
Weather conditions	Temp:16.4°C Hygro: 68% Patm:1021.4 hpa
Observer	P. Le Dû
Location	Kermerrien Observatory (Porspoder, FR)

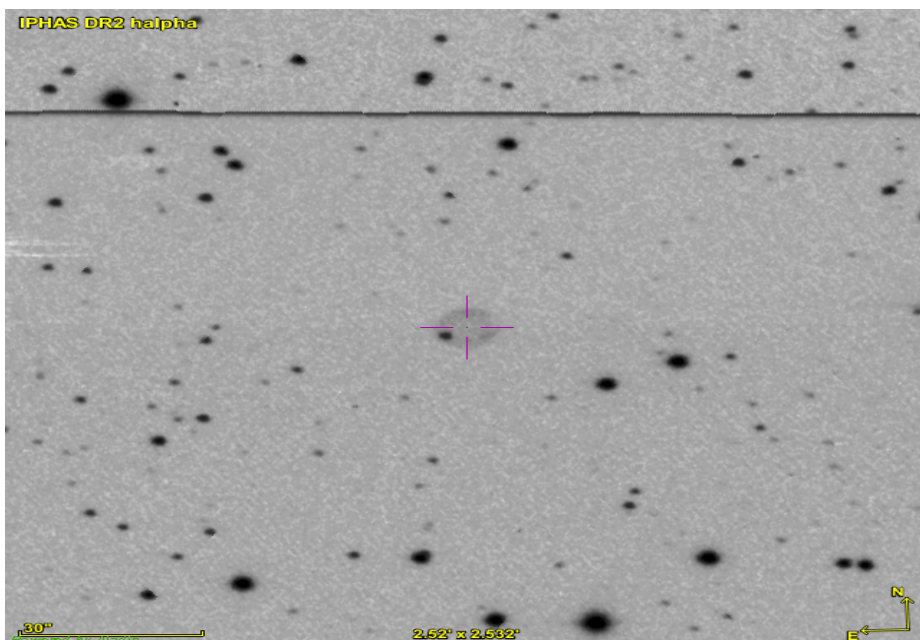
Mount	Losmandy G11
Telescope	Newton 200mm F/5
Spectroscope	Alpy 600 (23um slit)
Resolution (bin 1x1)	~1nm at 656 nm
Principal camera	Atik 414 EX
Dispersion (bin 1x1)	~0,3 nm/pixel at 656 nm
Cam temperature	-10°C
Binning	2x2
Guiding camera	Atik 314L+
Data acquisition Soft	Prism v11.2.3.21
Data processing soft	ISIS V6.1.1

Exposure on object	10 x 1200 s
Master Dark	Corrected
Master Flat	Corrected
Master Offset	Corrected
Neon-Argon calibration	Corrected
Reference star calib.	HD222439_A0V
Exposure on ref star	14 x 2 s
Ref star Sp. date	23.030/08/2023

## Slit position



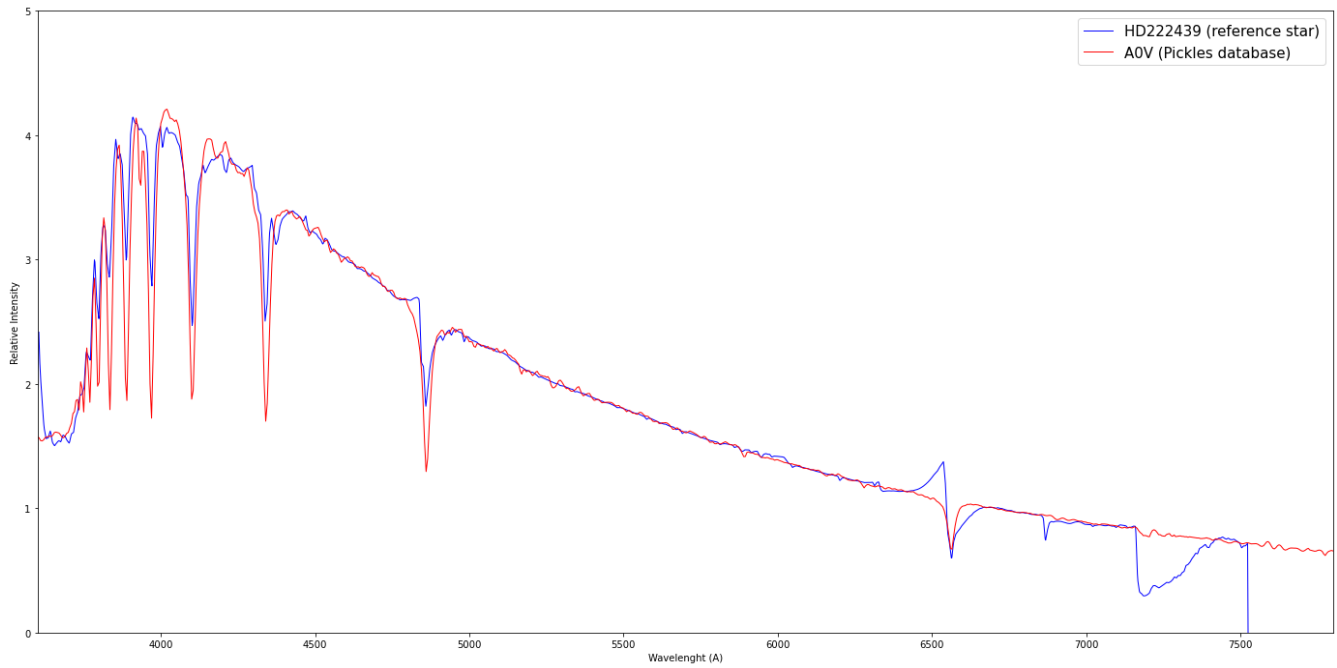
## Object picture(s)



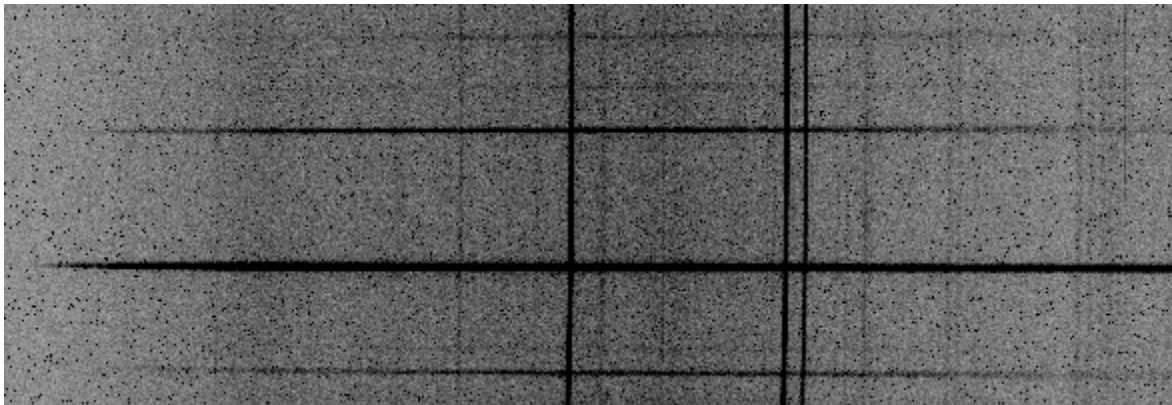


# Instrumental Response and 2D Spectra

Instrumental response (red = theoretical ref star spectrum ; blue = acquired ref star spectrum with instrumental response correction applied)

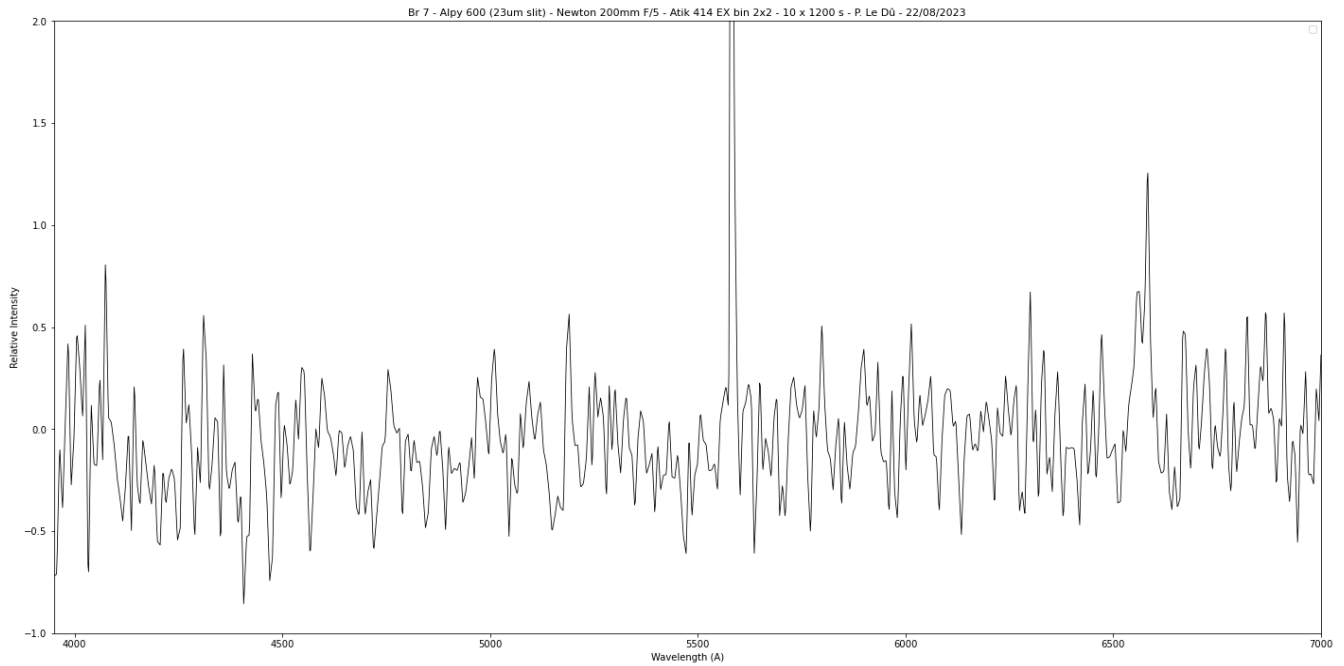


## 2D Raw spectrum



## 2D Processed spectrum





## Comments

Strong [NII](6583A) line detected.

The [OIII] line appears to be present but is very weak.

Note an unidentified line at 5190A.